

Anti-ILF3 Recombinant Rabbit Monoclonal Antibody



Catalog #: 5483

Aliases

ILF3; Interleukin Enhancer Binding Factor 3; MPHOSPH4; DRBP76; NF90; MPP4; Nuclear Factor Of Activated T-Cells 90 KDa; Translational Control Protein 80; M-Phase Phosphoprotein 4; NFAR110; NF90ctv; MPP4110; NFAR-1; NFAR-2; TCP110; NFAR90; NF110b; NF110; NF90a; NF90c; M Phase Phosphoprotein 4, Nuclear Factor Associated With DS RNA; Interleukin Enhancer Binding Factor 3, 90kDa; Nuclear Factor Of Activated T-Cells 110 KDa; Interleukin Enhancer Binding Factor 3, 90kD; Double-Stranded RNA-Binding Protein, 76 KD; Interleukin Enhancer-Binding Factor 3; Nuclear Factor Associated With DsRNA; DsRNA Binding Protein NFAR-2/MPP4; NF-AT-90; TCP80; DRBF; NFAR; Nuclear Factor Of Activated T-Cells, 90 KD; Double-Stranded RNA-Binding Protein 76; NF90b; NFAR2; CBTF; MMP4

Background

Gene Name: ILF3

NCBI Gene Entry: [3609](#)

UniProt Entry: [Q12906](#)

Application Information

Molecular Weight: Predicted, 95 kDa; observed, 100 kDa

Clonality: Rabbit monoclonal antibody

Clone ID: 25GB1700

Species Reactivity: Human, mouse, rat

Applications Tested: Western blotting (WB), flow cytometry (FCM), immunocytochemistry (IC)

Immunogen

A synthesized peptide derived from human ILF3

Isotype

Rabbit IgG

Storage Buffer

Supplied in PBS (pH 7.4) containing 50% glycerol, and 0.02% sodium azide.

Storage

Store at -20 °C for one year.

Recommended Dilutions

SUPPORT

SUPPORT@GENUINBIOTECH.COM
TEL: +1-540-855-7041

ORDERS

SALES@GENUINBIOTECH.COM
FAX: +1-540-855-7041

WWW.GENUINBIOTECH.COM

Anti-ILF3 Recombinant Rabbit Monoclonal Antibody

PAGE 2

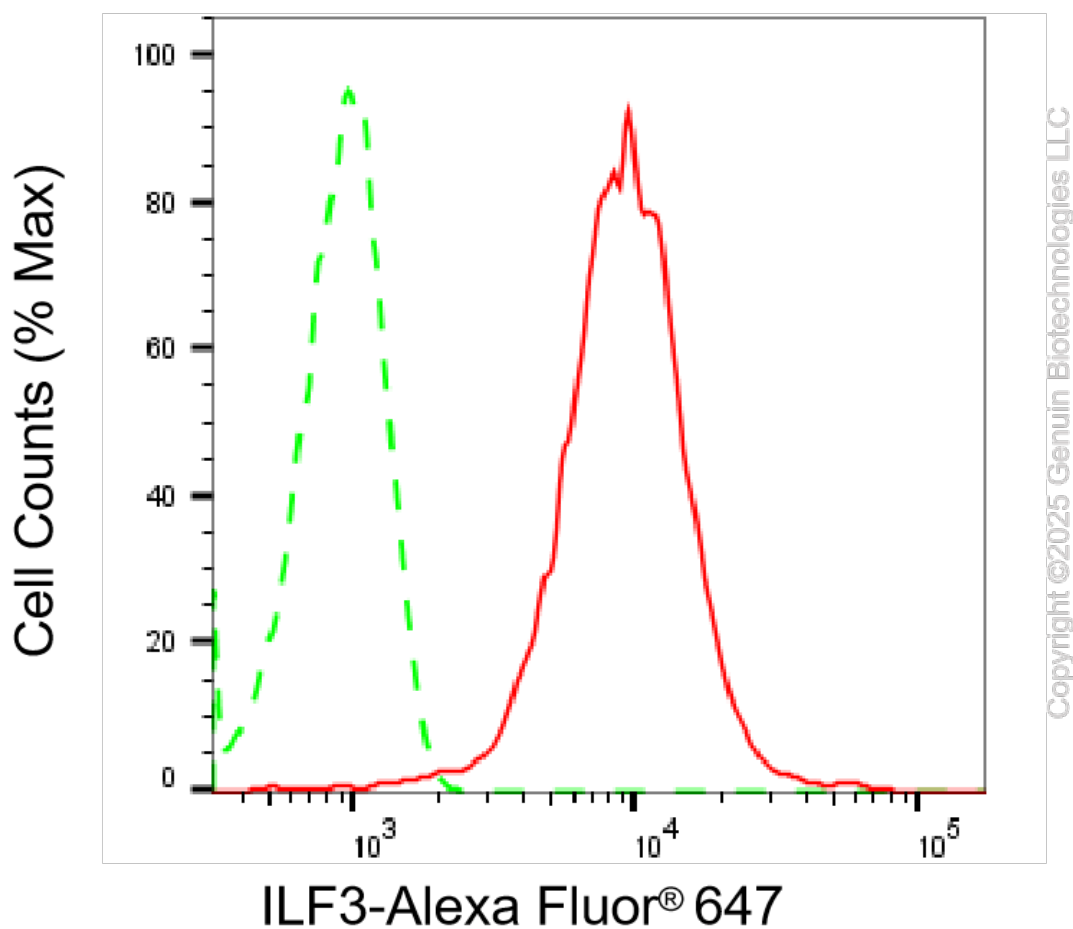
Western Blotting (WB): 1:1,000-1:5,000

Flow Cytometry (FCM): 1:2,000

Immunocytochemistry (IC): 1:100-1:1,000

Note: This product is for research use only.

Validation Data



Flow cytometric analysis of ILF3 expression in HepG2 cells using anti-ILF3 antibody (Cat#5483, 1:2,000). Green, isotype control; red, ILF3.

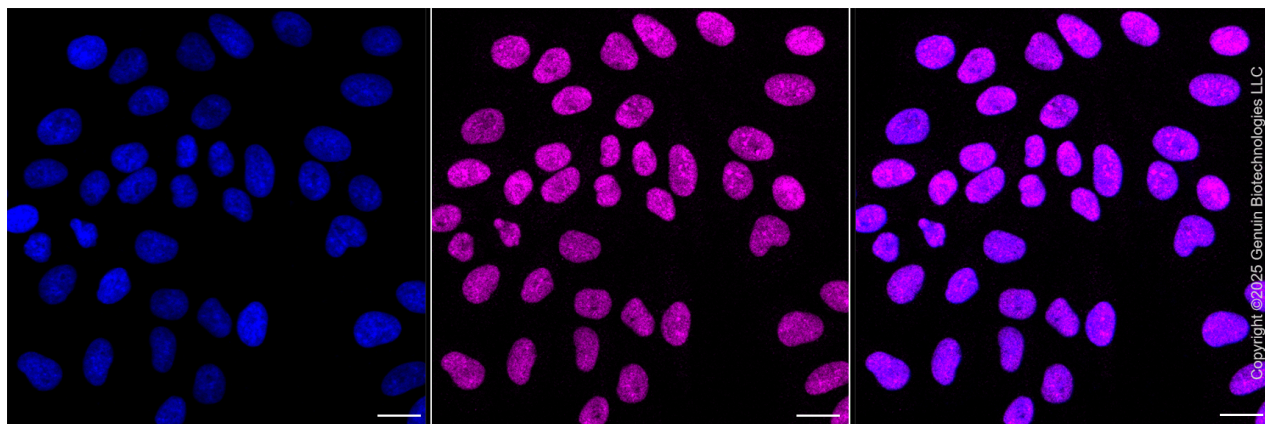
SUPPORT

SUPPORT@GENUINBIOTECH.COM
TEL: +1-540-855-7041

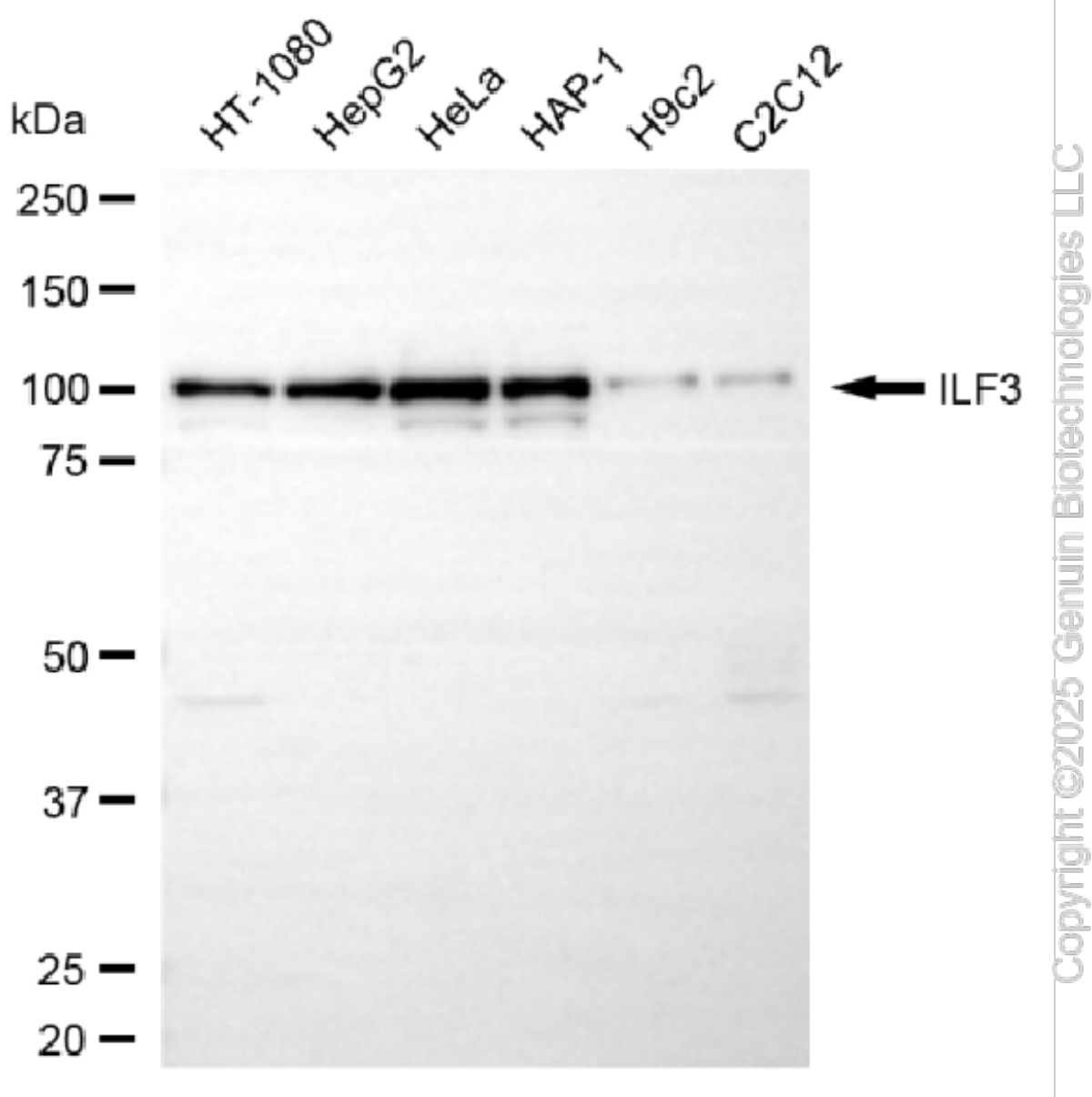
ORDERS

SALES@GENUINBIOTECH.COM
FAX: +1-540-855-7041

WWW.GENUINBIOTECH.COM



Immunocytochemical staining of HepG2 cells with anti-ILF3 antibody (Cat#5483, 1:1,000) . Nuclei were stained blue with DAPI; ILF3 was stained magenta with Alexa Fluor® 647. Images were taken using Leica stellaris 5. Protein abundance based on laser Intensity and smart gain: Medium. Scale bar, 20 μ m.



Western blotting analysis using anti-ILF3 antibody (Cat#5483). Total cell lysates (30 μ g) from various cell lines were loaded and separated by SDS-PAGE. The blot was incubated with anti-ILF3 antibody (Cat#5483, 1:5,000) and HRP-conjugated goat anti-rabbit secondary antibody (Cat#201, 1:20,000) respectively. Image was developed using NaQ™ ECL Substrate Kit (Cat#716).