

Anti-Keratin 13 Recombinant Rabbit Monoclonal Antibody



Catalog #: 5484

Aliases

KRT13; Keratin 13; K13; Keratin, Type I Cytoskeletal 13; CK13; Keratin 13, Type I; Cytokeratin 13; MGC161462; MGC3781; CK-13; Cytokeratin-13; Keratin-13; WSN2

Background

Gene Name: KRT13

NCBI Gene Entry: [3860](#)

UniProt Entry: [P13646](#)

Application Information

Molecular Weight: Predicted, 50 kDa; observed, 50 kDa

Clonality: Rabbit monoclonal antibody

Clone ID: 25GB1705

Species Reactivity: Human

Applications Tested: Western blotting (WB)

Immunogen

A synthesized peptide derived from human Cytokeratin 13

Isotype

Rabbit IgG

Storage Buffer

Supplied in PBS (pH 7.4) containing 50% glycerol, and 0.02% sodium azide.

Storage

Store at -20 °C for one year.

Recommended Dilutions

Western Blotting (WB): 1:1,000-1:5,000

Note: This product is for research use only.

Validation Data

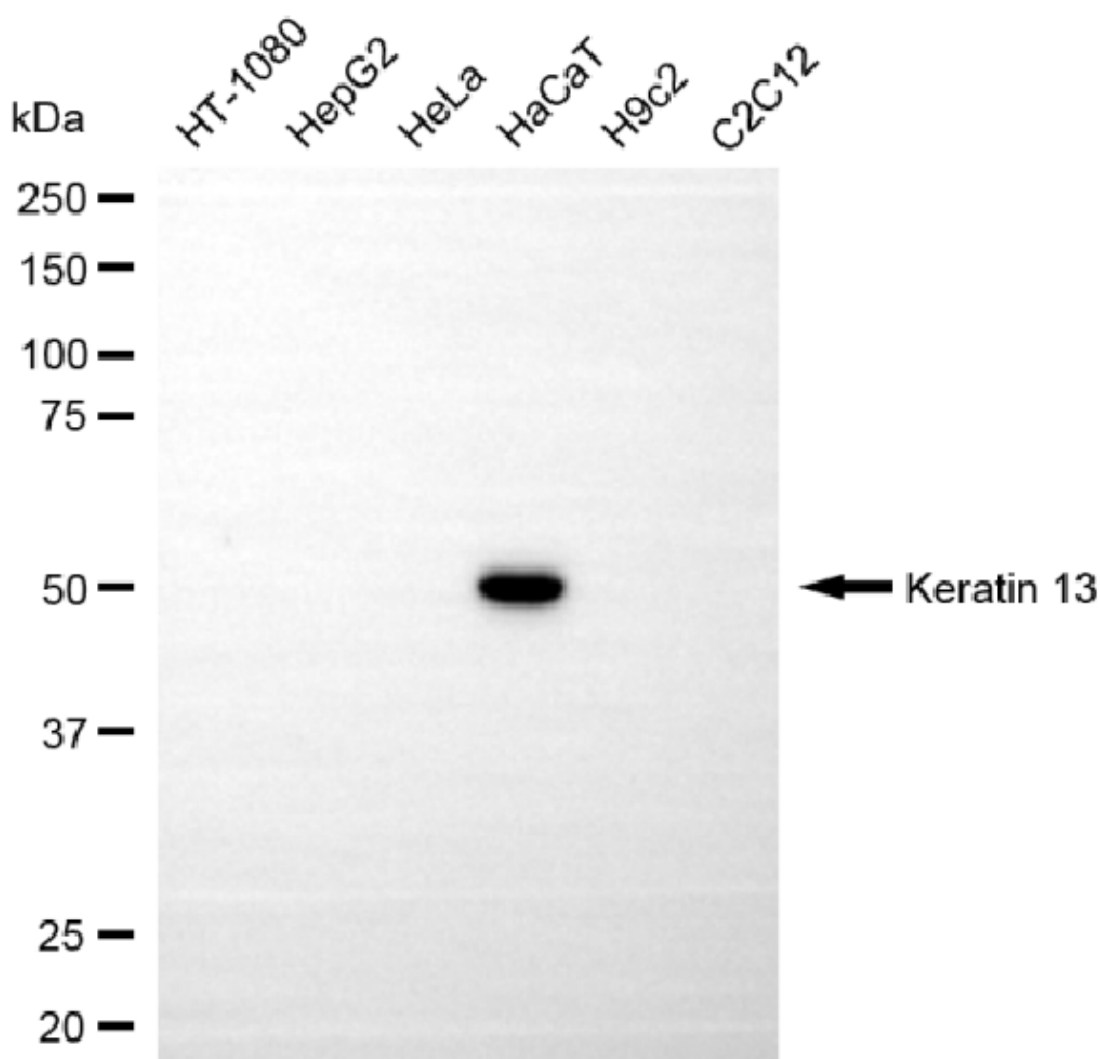
SUPPORT

SUPPORT@GENUINBIOTECH.COM
TEL: +1-540-855-7041

ORDERS

SALES@GENUINBIOTECH.COM
FAX: +1-540-855-7041

WWW.GENUINBIOTECH.COM



Copyright ©2025 Genuin Biotechnologies LLC

Western blotting analysis using anti-keratin 13 antibody (Cat#5484). Total cell lysates (30 µg) from various cell lines were loaded and separated by SDS-PAGE. The blot was incubated with anti-keratin 13 antibody (Cat#5484, 1:5,000) and HRP-conjugated goat anti-rabbit secondary antibody (Cat#201, 1:20,000) respectively. Image was developed using NaQ™ ECL Substrate Kit (Cat#716).