

Anti-TUBA1B Recombinant Rabbit Monoclonal Antibody



Catalog #: 5493

Aliases

TUBA1B; Tubulin Alpha 1b; K-ALPHA-1; Tubulin Alpha-Ubiquitous Chain; Tubulin, Alpha, Ubiquitous; Alpha-Tubulin Ubiquitous; Tubulin Alpha-1B Chain; Tubulin K-Alpha-1; Alpha Tubulin; EC 3.6.5.-

Background

Gene Name: TUBA1B

NCBI Gene Entry: [10376](#)

UniProt Entry: [P68363](#)

Application Information

Molecular Weight: Predicted, 50 kDa; observed, 50 kDa

Clonality: Rabbit monoclonal antibody

Clone ID: 25GB1750

Species Reactivity: Human, mouse, rat

Applications Tested: Western blotting (WB), flow cytometry (FCM), immunocytochemistry (IC)

Immunogen

A synthesized peptide derived from human alpha 1B Tubulin

Isotype

Rabbit IgG

Storage Buffer

Supplied in PBS (pH 7.4) containing 50% glycerol, and 0.02% sodium azide.

Storage

Store at -20 °C for one year.

Recommended Dilutions

Western Blotting (WB): 1:1,000-1:5,000

Flow Cytometry (FCM): 1:2,000

Immunocytochemistry (IC): 1:100-1:1,000

Note: This product is for research use only.

SUPPORT

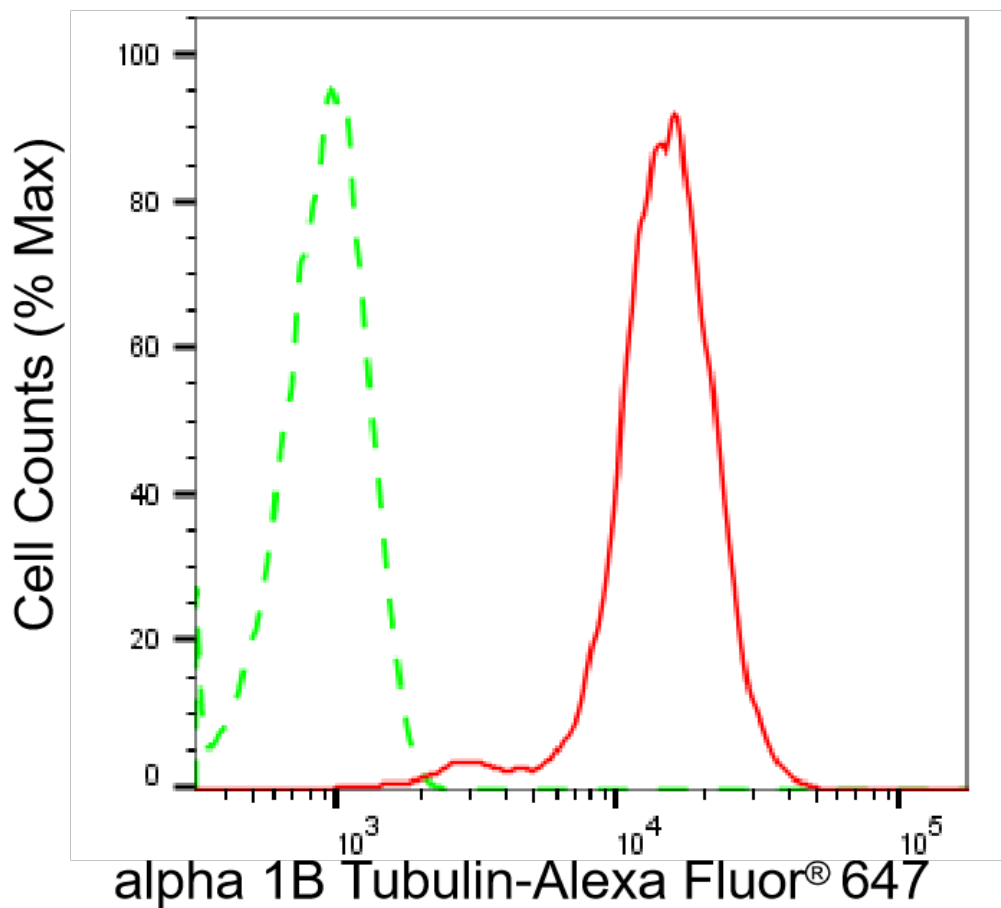
SUPPORT@GENUINBIOTECH.COM
TEL: +1-540-855-7041

ORDERS

SALES@GENUINBIOTECH.COM
FAX: +1-540-855-7041

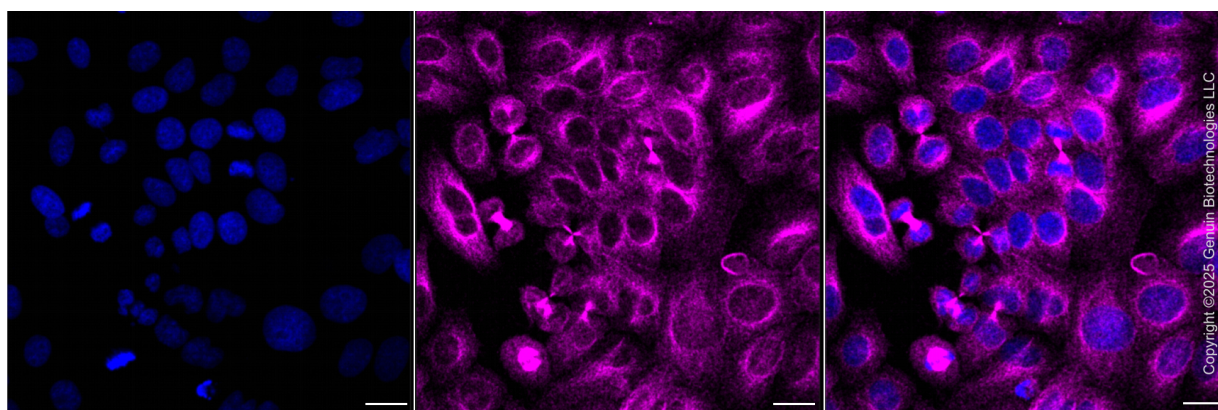
WWW.GENUINBIOTECH.COM

Validation Data



Copyright ©2025 Genuin Biotechnologies LLC

Flow cytometric analysis of alpha 1B Tubulin expression in HepG2 cells using anti-alpha 1B Tubulin antibody (Cat#5493, 1:2,000). Green, isotype control; red, alpha 1B Tubulin.



Copyright ©2025 Genuin Biotechnologies LLC

Immunocytochemical staining of HepG2 cells with anti-alpha 1B Tubulin antibody (Cat#5493, 1:1,000). Nuclei were stained blue with DAPI; alpha 1B Tubulin was stained magenta with Alexa

SUPPORT

SUPPORT@GENUINBIOTECH.COM
TEL: +1-540-855-7041

ORDERS

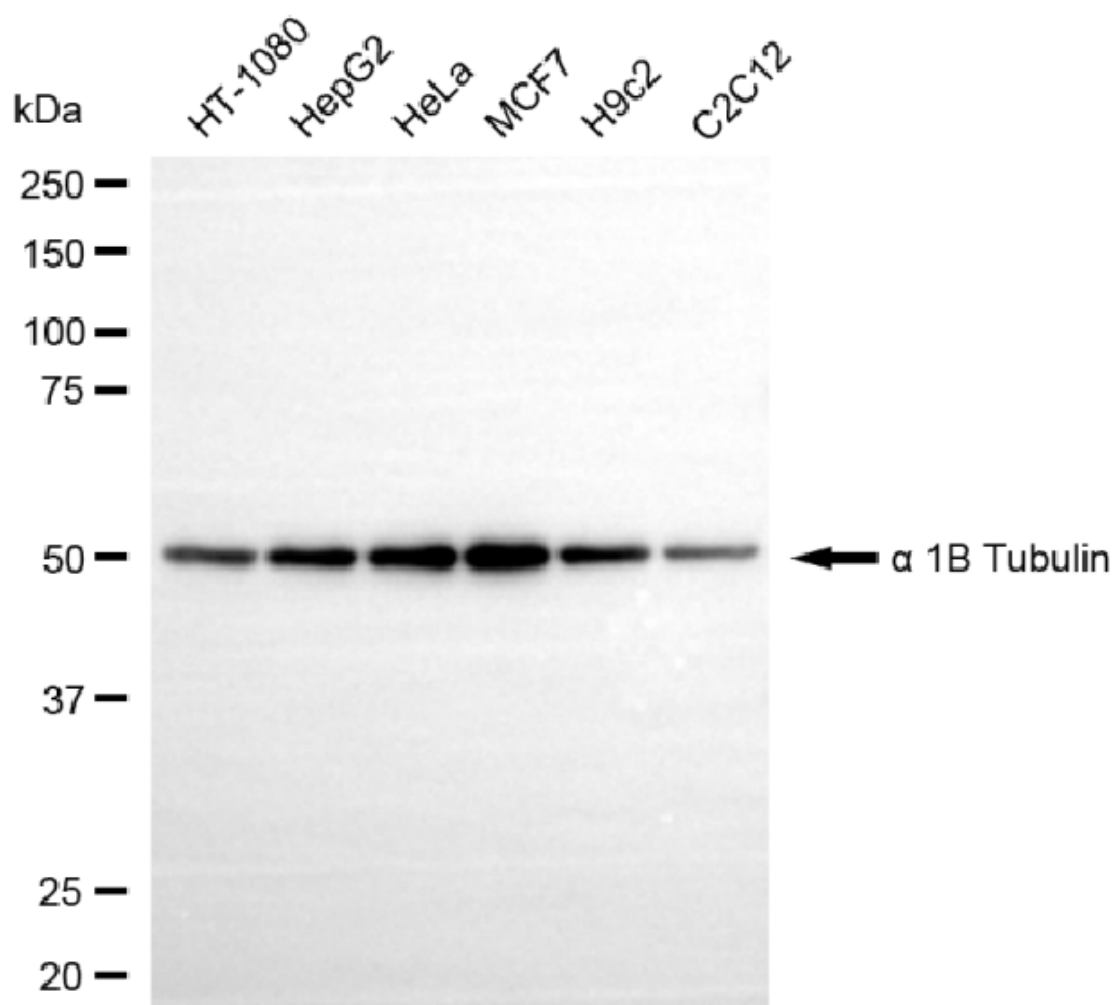
SALES@GENUINBIOTECH.COM
FAX: +1-540-855-7041

WWW.GENUINBIOTECH.COM

Anti-TUBA1B Recombinant Rabbit Monoclonal Antibody

PAGE 3

Fluor® 647. Images were taken using Leica stellaris 5. Protein abundance based on laser Intensity and smart gain: . Scale bar, 20 μ m.



Copyright ©2025 Genuin Biotechnologies LLC

Western blotting analysis using anti- α 1B Tubulin antibody (Cat#5493). Total cell lysates (30 μ g) from various cell lines were loaded and separated by SDS-PAGE. The blot was incubated with anti- α 1B Tubulin antibody (Cat#5493, 1:5,000) and HRP-conjugated goat anti-rabbit secondary antibody (Cat#201, 1:20,000) respectively. Image was developed using NaQ™ ECL Substrate Kit (Cat#716).

SUPPORT

SUPPORT@GENUINBIOTECH.COM
TEL: +1-540-855-7041

ORDERS

SALES@GENUINBIOTECH.COM
FAX: +1-540-855-7041

WWW.GENUINBIOTECH.COM