

Anti-PRKD1 Recombinant Rabbit Monoclonal Antibody



Catalog #: 5494

Aliases

PRKD1; Protein Kinase D1; PKD; PKC-Mu; PRKCM; PKCM; Serine/Threonine-Protein Kinase D1; Protein Kinase C Mu Type; Protein Kinase C, Mu; Protein Kinase D; EC 2.7.11.13; NPKC-D1; NPKC-Mu; EC 2.7.11; CHDED; PKD1

Background

Gene Name: PRKD1

NCBI Gene Entry: [5587](#)

UniProt Entry: [Q15139](#)

Application Information

Molecular Weight: Predicted, 102 kDa; observed, 105 kDa

Clonality: Rabbit monoclonal antibody

Clone ID: 25GB1755

Species Reactivity: Human, mouse, rat

Applications Tested: Western blotting (WB)

Immunogen

A synthesized peptide derived from human PKC mu

Isotype

Rabbit IgG

Storage Buffer

Supplied in PBS (pH 7.4) containing 50% glycerol, and 0.02% sodium azide.

Storage

Store at -20 °C for one year.

Recommended Dilutions

Western Blotting (WB): 1:1,000-1:5,000

Note: This product is for research use only.

Validation Data

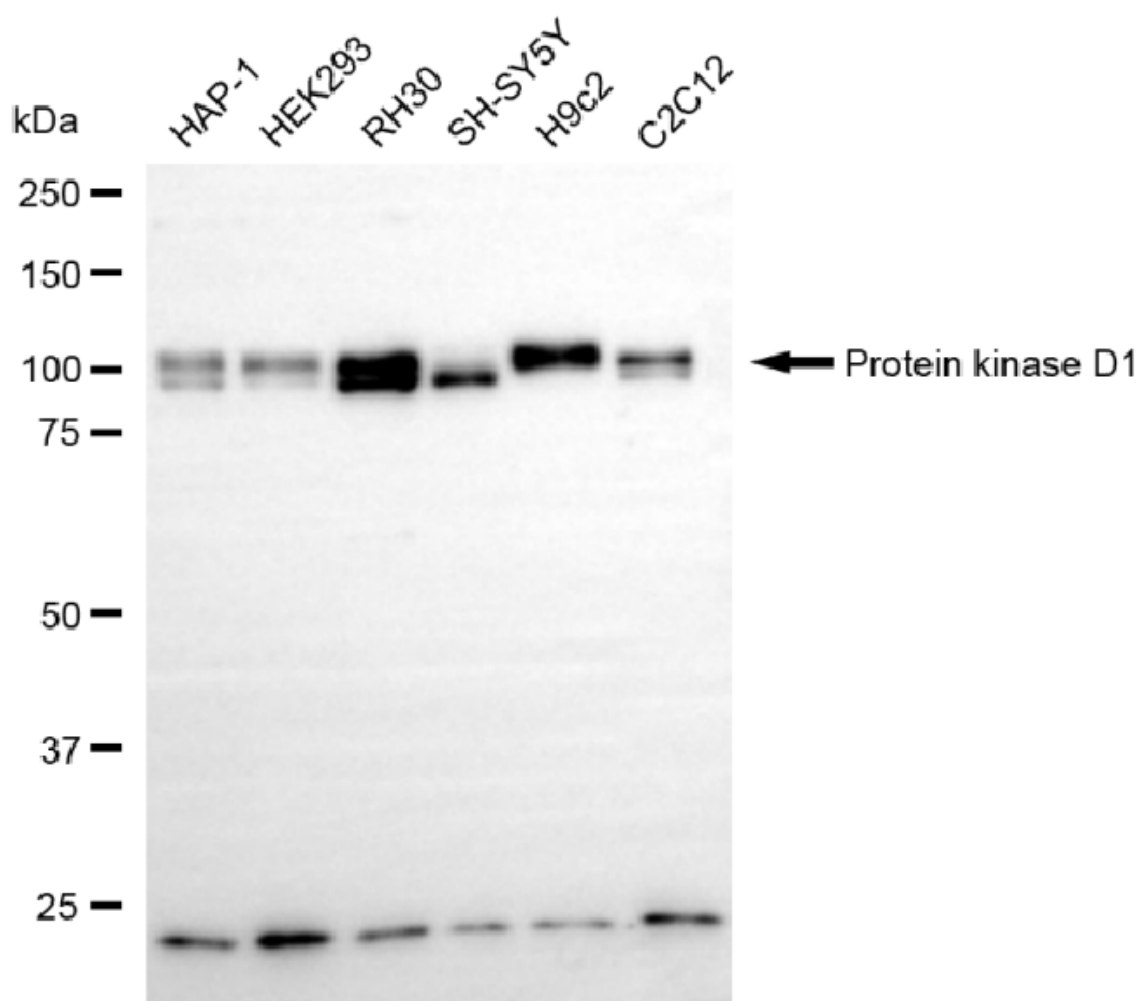
SUPPORT

SUPPORT@GENUINBIOTECH.COM
TEL: +1-540-855-7041

ORDERS

SALES@GENUINBIOTECH.COM
FAX: +1-540-855-7041

WWW.GENUINBIOTECH.COM



Copyright ©2025 Genuin Biotechnologies LLC

Western blotting analysis using anti-protein kinase D1 antibody (Cat#5494). Total cell lysates (30 µg) from various cell lines were loaded and separated by SDS-PAGE. The blot was incubated with anti-protein kinase D1 antibody (Cat#5494, 1:5,000) and HRP-conjugated goat anti-rabbit secondary antibody (Cat#201, 1:20,000) respectively. Image was developed using NaQ™ ECL Substrate Kit (Cat#716).