

Anti-PSMD14 Recombinant Rabbit Monoclonal Antibody



Catalog #: 5496

Aliases

PSMD14; Proteasome 26S Subunit, Non-ATPase 14; POH1; Rpn11; Pad1; Proteasome (Prosome, Macropain) 26S Subunit, Non-ATPase, 14; 26S Proteasome Non-ATPase Regulatory Subunit 14; 26S Proteasome-Associated PAD1 Homolog 1; Testis Tissue Sperm-Binding Protein Li 69n; 26S Proteasome Regulatory Subunit Rpn11; 26S Proteasome Regulatory Subunit RPN11; EC 3.4.19.-; EC 3.1.2.15

Background

Gene Name: PSMD14

NCBI Gene Entry: [10213](#)

UniProt Entry: [O00487](#)

Application Information

Molecular Weight: Predicted, 35 kDa; observed, 32 kDa

Clonality: Rabbit monoclonal antibody

Clone ID: 25GB1765

Species Reactivity: Human, mouse, rat

Applications Tested: Western blotting (WB), flow cytometry (FCM), immunocytochemistry (IC)

Immunogen

A synthesized peptide derived from human PSMD14

Isotype

Rabbit IgG

Storage Buffer

Supplied in PBS (pH 7.4) containing 50% glycerol, and 0.02% sodium azide.

Storage

Store at -20 °C for one year.

Recommended Dilutions

Western Blotting (WB): 1:1,000-1:5,000

Flow Cytometry (FCM): 1:2,000

Immunocytochemistry (IC): 1:100-1:1,000

SUPPORT

SUPPORT@GENUINBIOTECH.COM
TEL: +1-540-855-7041

ORDERS

SALES@GENUINBIOTECH.COM
FAX: +1-540-855-7041

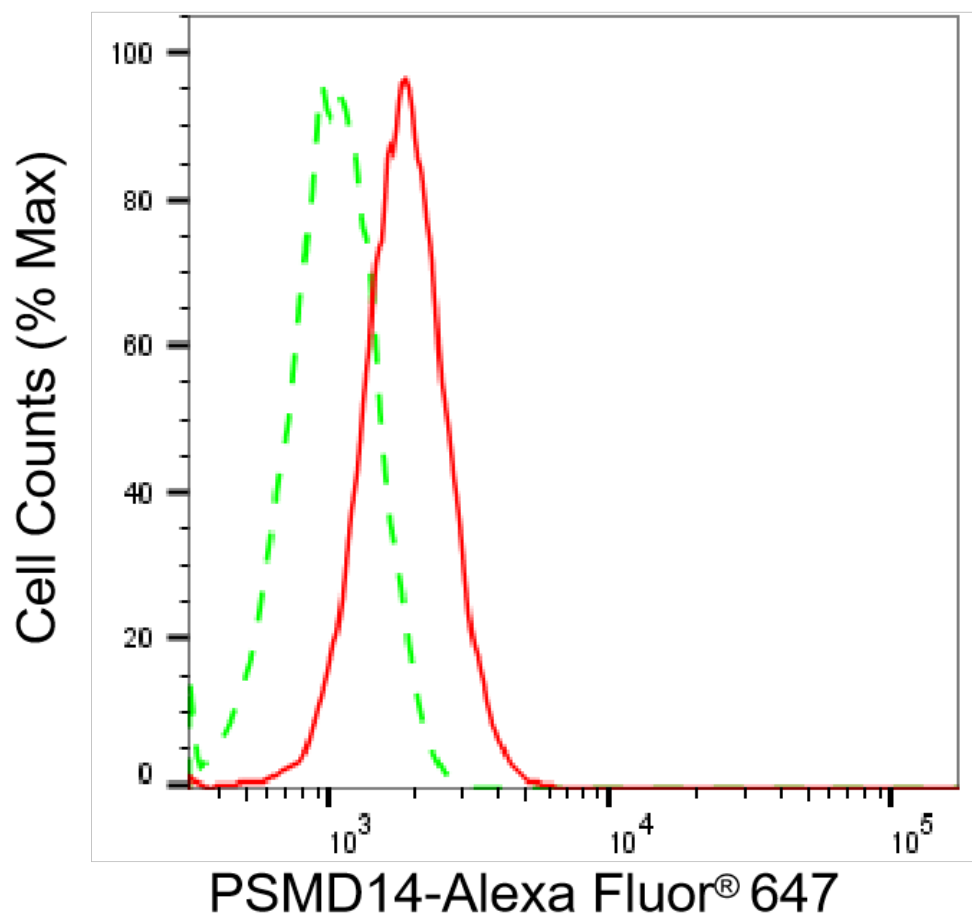
WWW.GENUINBIOTECH.COM

Anti-PSMD14 Recombinant Rabbit Monoclonal Antibody

PAGE 2

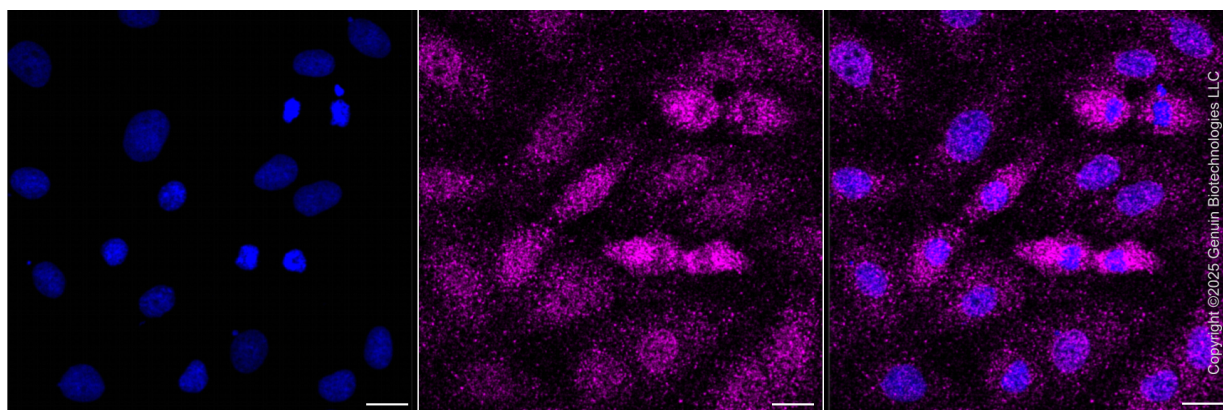
Note: This product is for research use only.

Validation Data



Copyright ©2025 Genuin Biotechnologies LLC

Flow cytometric analysis of PSMD14 expression in H9c2 cells using anti-PSMD14 antibody (Cat#5496, 1:2,000). Green, isotype control; red, PSMD14.



Copyright ©2025 Genuin Biotechnologies LLC

SUPPORT

SUPPORT@GENUINBIOTECH.COM
TEL: +1-540-855-7041

ORDERS

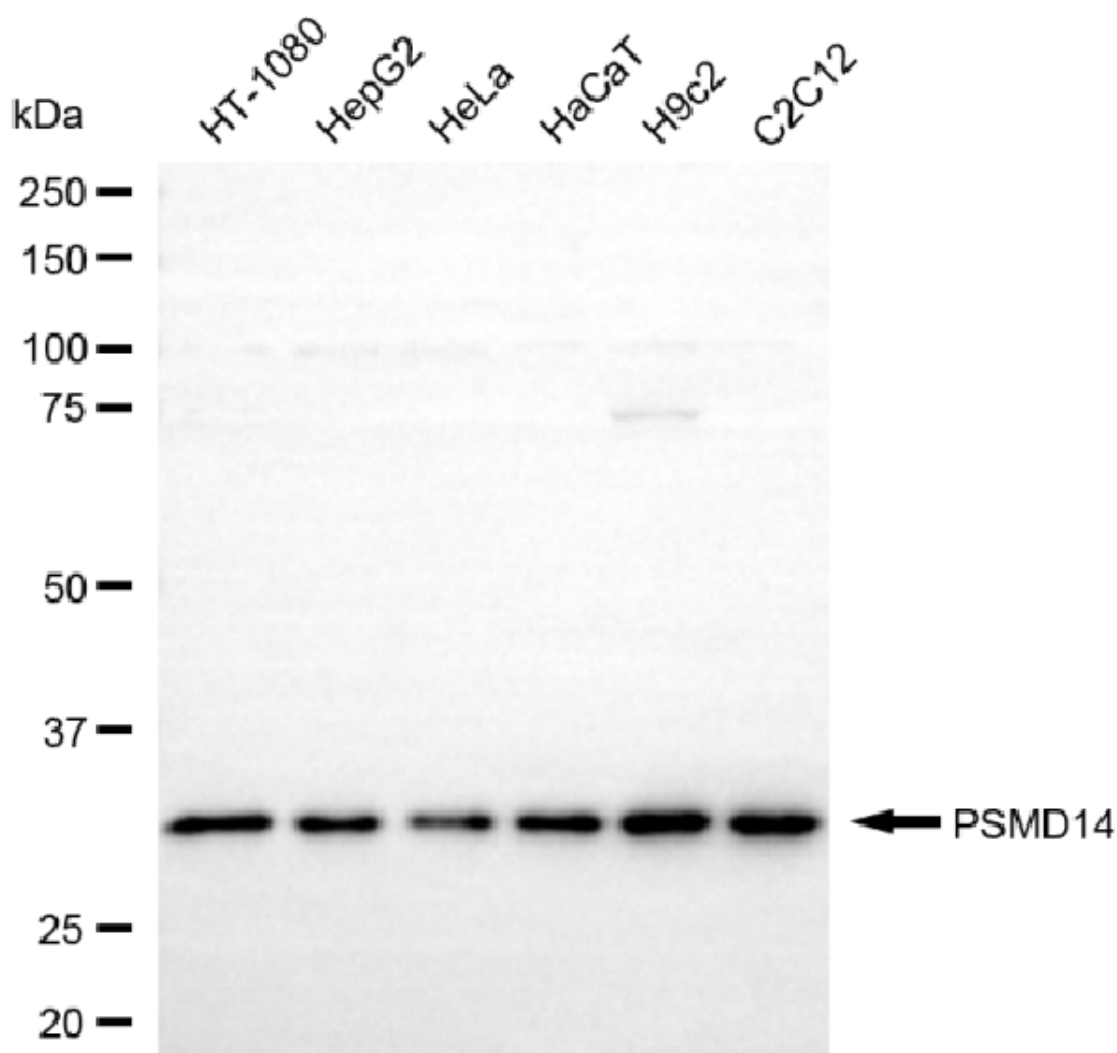
SALES@GENUINBIOTECH.COM
FAX: +1-540-855-7041

WWW.GENUINBIOTECH.COM

Anti-PSMD14 Recombinant Rabbit Monoclonal Antibody

PAGE 3

Immunocytochemical staining of H9C2 cells with anti-PSMD14 antibody (Cat#5496, 1:1,000) . Nuclei were stained blue with DAPI; PSMD14 was stained magenta with Alexa Fluor® 647. Images were taken using Leica stellaris 5. Protein abundance based on laser Intensity and smart gain: Medium. Scale bar, 20 μ m.



Copyright ©2025 Genuin Biotechnologies LLC

Western blotting analysis using anti-PSMD14 antibody (Cat#5496). Total cell lysates (30 μ g) from various cell lines were loaded and separated by SDS-PAGE. The blot was incubated with anti-PSMD14 antibody (Cat#5496, 1:5,000) and HRP-conjugated goat anti-rabbit secondary antibody (Cat#201, 1:20,000) respectively. Image was developed using NaQ™ ECL Substrate Kit (Cat#716).

SUPPORT

SUPPORT@GENUINBIOTECH.COM
TEL: +1-540-855-7041

ORDERS

SALES@GENUINBIOTECH.COM
FAX: +1-540-855-7041

WWW.GENUINBIOTECH.COM