

Anti-INCENP Recombinant Rabbit Monoclonal Antibody



Catalog #: 5498

Aliases

INCENP; Inner Centromere Protein; Inner Centromere Protein Antigens 135/155kDa; FLJ31633; Binds And Activates Aurora-B And -C In Vivo And In Vitro; Inner Centromere Protein Antigens (135kD, 155kD); Inner Centromere Protein INCENP; Chromosomal Passenger Protein

Background

Gene Name: INCENP

NCBI Gene Entry: [3619](#)

UniProt Entry: [Q9NQS7](#)

Application Information

Molecular Weight: Predicted, 105 kDa; observed, 130 kDa

Clonality: Rabbit monoclonal antibody

Clone ID: 25GB1775

Species Reactivity: Human, mouse, rat

Applications Tested: Western blotting (WB), flow cytometry (FCM)

Immunogen

A synthesized peptide derived from human INCENP

Isotype

Rabbit IgG

Storage Buffer

Supplied in PBS (pH 7.4) containing 50% glycerol, and 0.02% sodium azide.

Storage

Store at -20 °C for one year.

Recommended Dilutions

Western Blotting (WB): 1:1,000-1:5,000

Flow Cytometry (FCM): 1:2,000

Note: This product is for research use only.

Validation Data

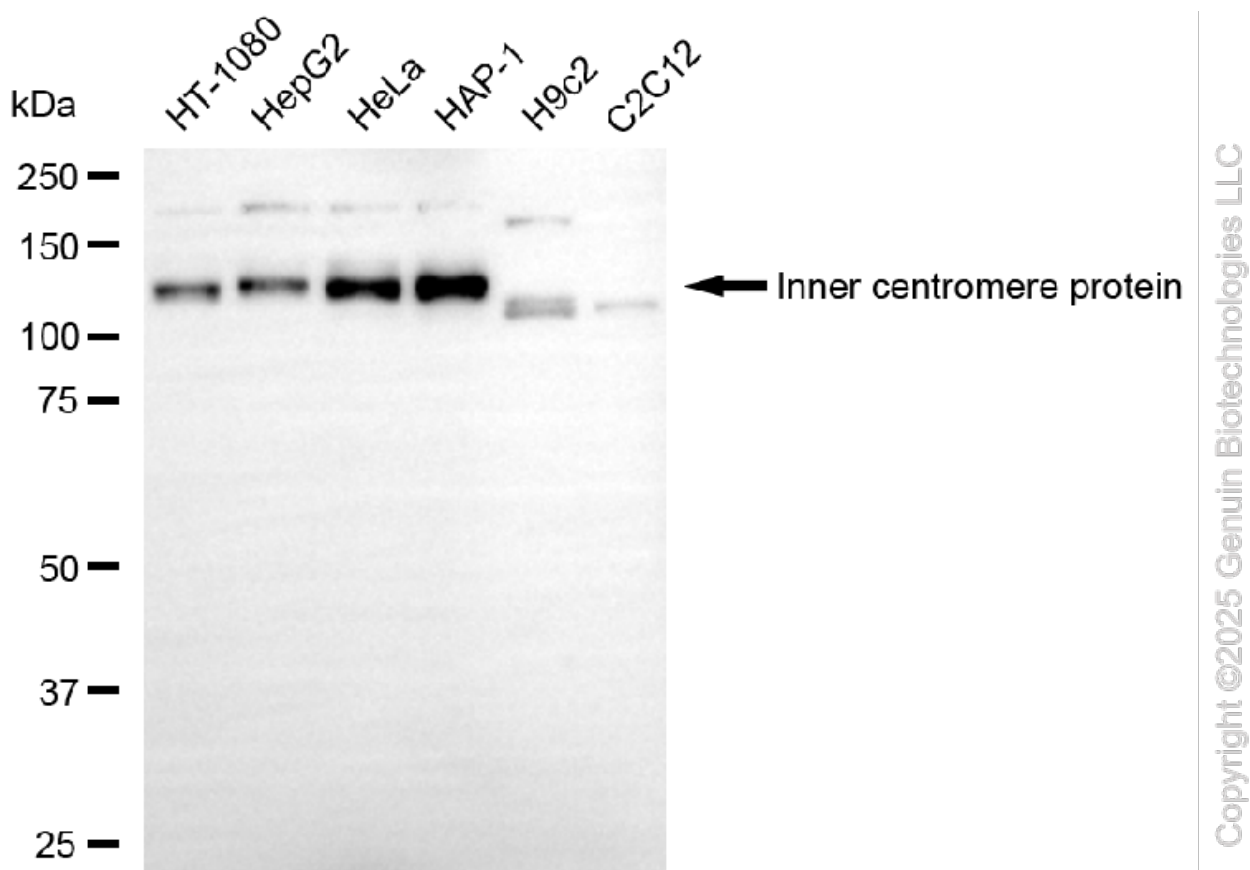
SUPPORT

SUPPORT@GENUINBIOTECH.COM
TEL: +1-540-855-7041

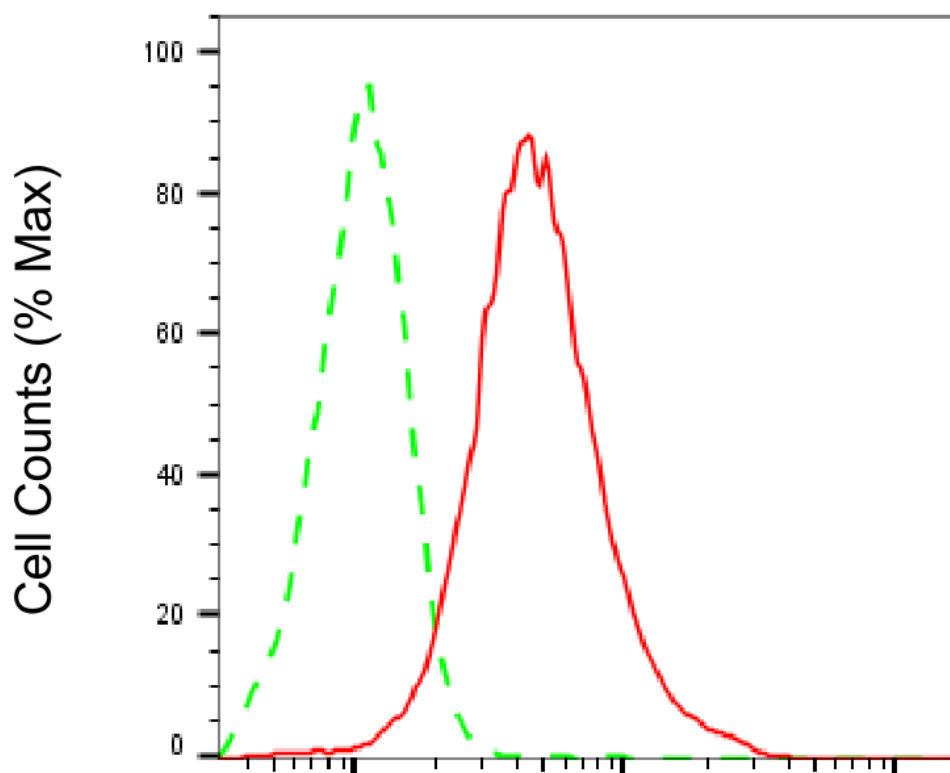
ORDERS

SALES@GENUINBIOTECH.COM
FAX: +1-540-855-7041

WWW.GENUINBIOTECH.COM



Western blotting analysis using anti-inner centromere protein antibody (Cat#5498). Total cell lysates (30 μ g) from various cell lines were loaded and separated by SDS-PAGE. The blot was incubated with anti-inner centromere protein antibody (Cat#5498, 1:5,000) and HRP-conjugated goat anti-rabbit secondary antibody (Cat#201, 1:20,000) respectively. Image was developed using FeQ™ ECL Substrate Kit (Cat#226).



Copyright ©2025 Genuin Biotechnologies LLC

Inner centromere protein-Alexa Fluor® 647

Flow cytometric analysis of Inner centromere protein expression in HAP-1 cells using anti-Inner centromere protein antibody (Cat#5498, 1:2,000). Green, isotype control; red, Inner centromere protein.