

# Anti-Phospho-Filamin A (S1083) Recombinant Rabbit Monoclonal Antibody



**Catalog #: 5500**

## Aliases

FLNA; Filamin A; ABP-280; FLN1; FLN; Endothelial Actin-Binding Protein; Actin Binding Protein 280; Non-Muscle Filamin; Filamin A, Alpha; Alpha-Filamin; Filamin-A; Filamin-1; FLN-A; OPD1; OPD2; Filamin A, Alpha (Actin Binding Protein 280); Epididymis Secretory Sperm Binding Protein; Actin-Binding Protein 280; Alpha Filamin; EC 2.1.1.43; EC 6.3.4.4; ABPX; CSBS; CVD1; FGS2; NHBP; XLVD; XMVD; FMD; MNS; OPD

## Background

Gene Name: FLNA

NCBI Gene Entry: [2316](#)

UniProt Entry: [P21333](#)

## Application Information

Molecular Weight: Predicted, 281 kDa; observed, 281 kDa

Clonality: Rabbit monoclonal antibody

Clone ID: 25GB1785

Species Reactivity: Human, mouse, rat

Applications Tested: Western blotting (WB), flow cytometry (FCM), immunocytochemistry (IC)

## Immunogen

A synthesized peptide derived from human Phospho-Filamin A (S1083)

## Isotype

Rabbit IgG

## Storage Buffer

Supplied in PBS (pH 7.4) containing 50% glycerol, and 0.02% sodium azide.

## Storage

Store at -20 °C for one year.

## Recommended Dilutions

Western Blotting (WB): 1:1,000-1:5,000

Flow Cytometry (FCM): 1:2,000

Immunocytochemistry (IC): 1:100-1:1,000

---

### SUPPORT

SUPPORT@GENUINBIOTECH.COM  
TEL: +1-540-855-7041

### ORDERS

SALES@GENUINBIOTECH.COM  
FAX: +1-540-855-7041

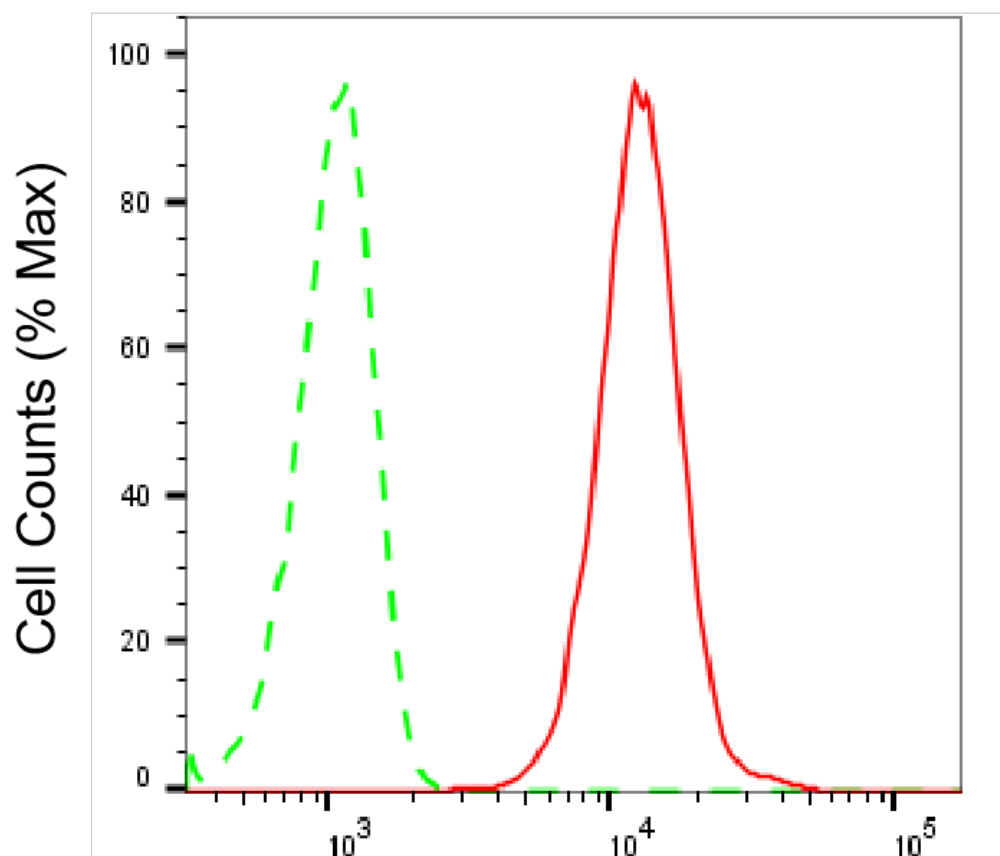
[WWW.GENUINBIOTECH.COM](http://WWW.GENUINBIOTECH.COM)

# Anti-Phospho-Filamin A (S1083) Recombinant Rabbit Monoclonal Antibody

PAGE 2

**Note:** This product is for research use only.

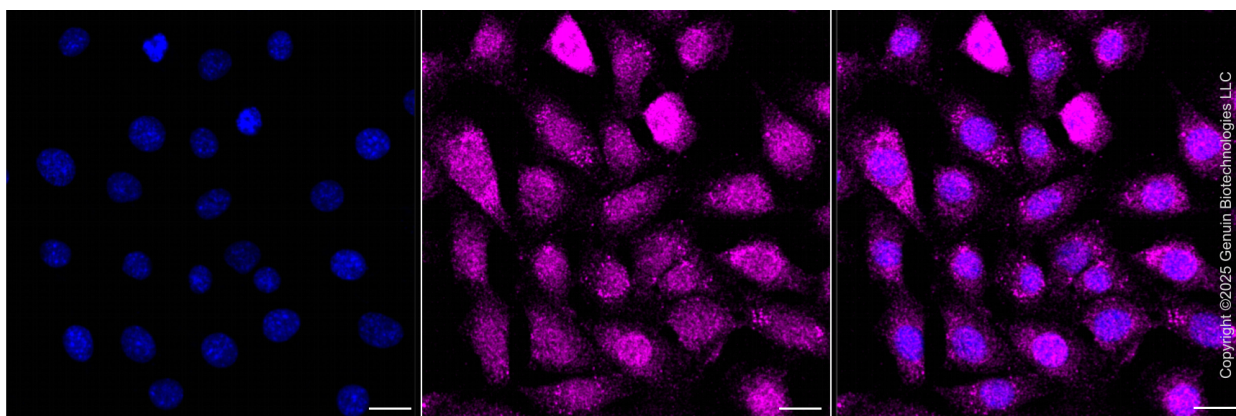
## Validation Data



Copyright ©2025 Genuin Biotechnologies LLC

## Phospho-Filamin A (S1083)-Alexa Fluor® 647

Flow cytometric analysis of Phospho-Filamin A (S1083) expression in C2C12 cells using anti-Phospho-Filamin A (S1083) antibody (Cat#5500, 1:2,000). Green, isotype control; red, Phospho-Filamin A (S1083).



Copyright ©2025 Genuin Biotechnologies LLC

### SUPPORT

SUPPORT@GENUINBIOTECH.COM  
TEL: +1-540-855-7041

### ORDERS

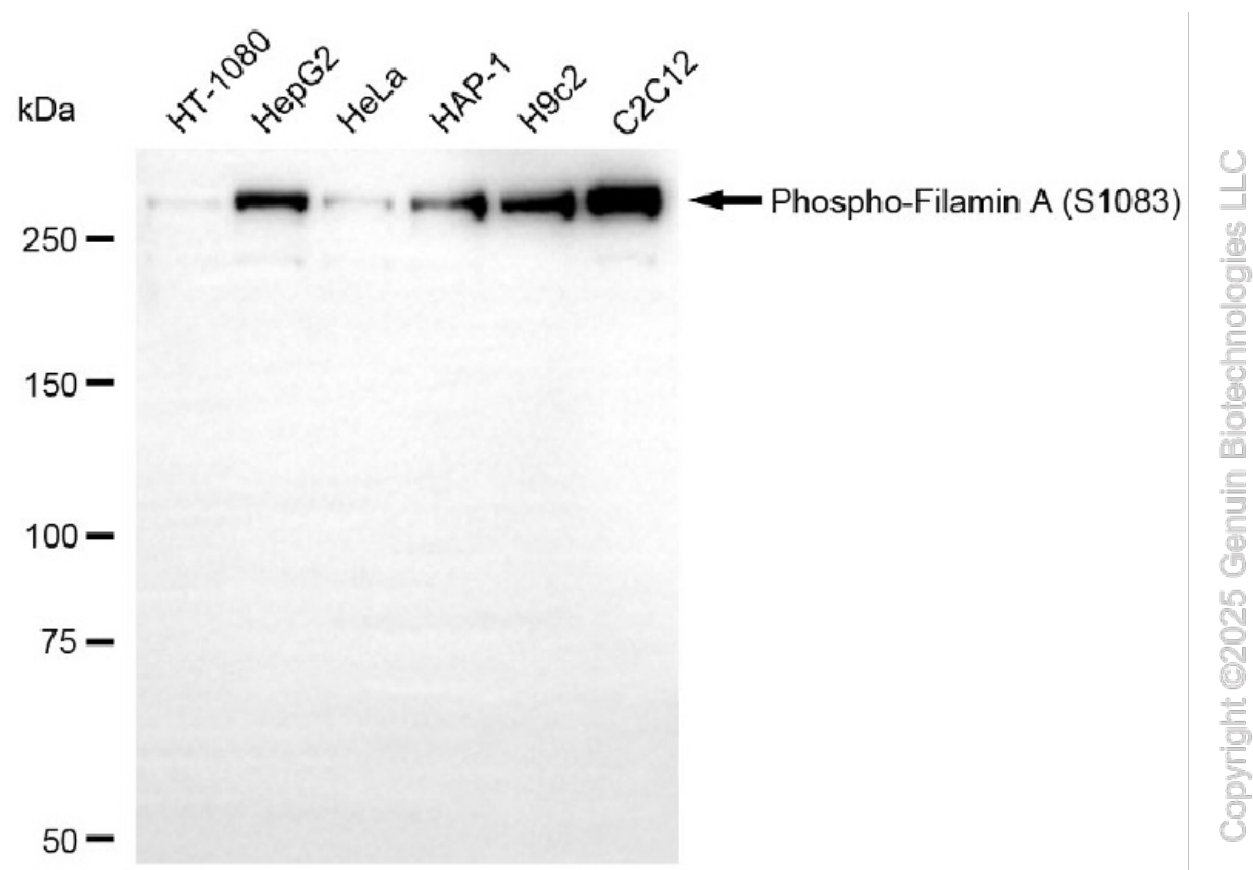
SALES@GENUINBIOTECH.COM  
FAX: +1-540-855-7041

WWW.GENUINBIOTECH.COM

## Anti-Phospho-Filamin A (S1083) Recombinant Rabbit Monoclonal Antibody

PAGE 3

Immunocytochemical staining of H9C2 cells with anti-Phospho-Filamin A (S1083) antibody (Cat#5500, 1:1,000). Nuclei were stained blue with DAPI; Phospho-Filamin A (S1083) was stained magenta with Alexa Fluor® 647. Images were taken using Leica stellaris 5. Protein abundance based on laser Intensity and smart gain: Medium. Scale bar, 20  $\mu$ m.



Western blotting analysis using anti-phospho-filamin A (S1083) antibody (Cat#5500). Total cell lysates (30  $\mu$ g) from various cell lines were loaded and separated by SDS-PAGE. The blot was incubated with anti-phospho-filamin A (S1083) antibody (Cat#5500, 1:5,000) and HRP-conjugated goat anti-rabbit secondary antibody (Cat#201, 1:20,000) respectively. Image was developed using FeQ™ ECL Substrate Kit (Cat#226).

### SUPPORT

SUPPORT@GENUINBIOTECH.COM  
TEL: +1-540-855-7041

### ORDERS

SALES@GENUINBIOTECH.COM  
FAX: +1-540-855-7041

WWW.GENUINBIOTECH.COM