

Anti-RPA2 Recombinant Rabbit Monoclonal Antibody



Catalog #: 5501

Aliases

RPA2; Replication Protein A2; Replication Protein A 32 KDa Subunit; Replication Protein A 34 KDa Subunit; Replication Factor A Protein 2; RF-A Protein 2; RP-A P32; RP-A P34; REPA2; RPA32; Replication Protein A2 (32kD); Replication Protein A2, 32kDa; RPA34

Background

Gene Name: RPA2

NCBI Gene Entry: [6118](#)

UniProt Entry: [P15927](#)

Application Information

Molecular Weight: Predicted, 29 kDa; observed, 29,32 kDa

Clonality: Rabbit monoclonal antibody

Clone ID: 25GB1790

Species Reactivity: Human, rat

Applications Tested: Western blotting (WB), immunocytochemistry (IC), flow cytometry (FCM)

Immunogen

A synthesized peptide derived from human RPA2

Isotype

Rabbit IgG

Storage Buffer

Supplied in PBS (pH 7.4) containing 50% glycerol, and 0.02% sodium azide.

Storage

Store at -20 °C for one year.

Recommended Dilutions

Western Blotting (WB): 1:1,000-1:5,000

Immunocytochemistry (IC): 1:100-1:1,000

Note: This product is for research use only.

Validation Data

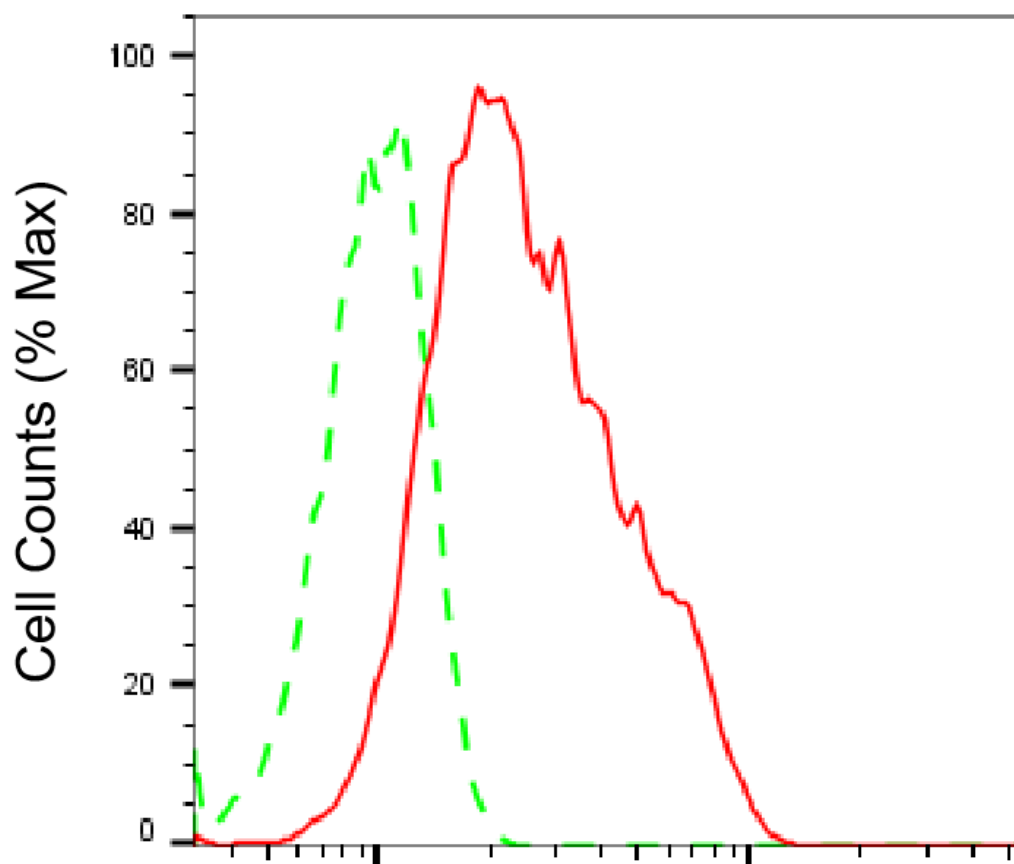
SUPPORT

SUPPORT@GENUINBIOTECH.COM
TEL: +1-540-855-7041

ORDERS

SALES@GENUINBIOTECH.COM
FAX: +1-540-855-7041

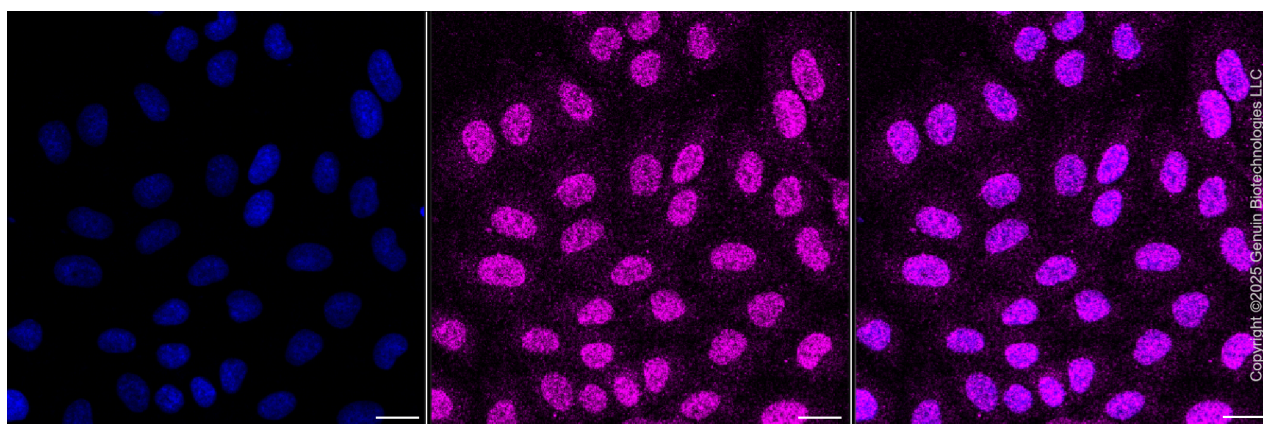
WWW.GENUINBIOTECH.COM



Copyright ©2025 Genuin Biotechnologies LLC

Replication protein A2-Alexa Fluor® 647

Flow cytometric analysis of Replication protein A2 expression in HepG2 cells using anti-Replication protein A2 antibody (Cat#5501, 1:2,000). Green, isotype control; red, Replication protein A2.



Copyright ©2025 Genuin Biotechnologies LLC

Immunocytochemical staining of HepG2 cells with anti-Replication protein A2 antibody (Cat#5501,1:1,000) . Nuclei were stained blue with DAPI; Replication protein A2 was stained

SUPPORT

SUPPORT@GENUINBIOTECH.COM
TEL: +1-540-855-7041

ORDERS

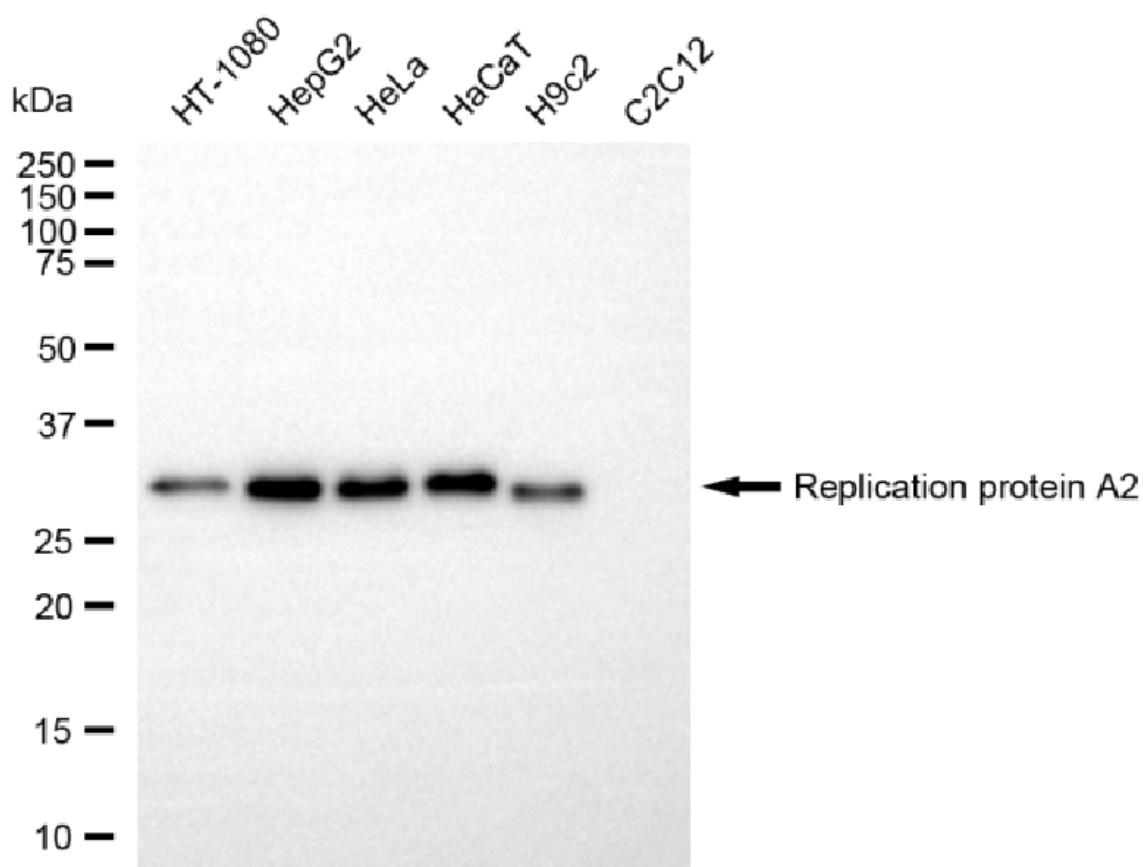
SALES@GENUINBIOTECH.COM
FAX: +1-540-855-7041

WWW.GENUINBIOTECH.COM

Anti-RPA2 Recombinant Rabbit Monoclonal Antibody

PAGE 3

magenta with Alexa Fluor® 647. Images were taken using Leica stellaris 5. Protein abundance based on laser Intensity and smart gain: Medium. Scale bar, 20 μ m.



Copyright ©2025 Genuin Biotechnologies LLC

Western blotting analysis using anti-replication protein A2 antibody (Cat#5501). Total cell lysates (30 μ g) from various cell lines were loaded and separated by SDS-PAGE. The blot was incubated with anti-replication protein A2 antibody (Cat#5501, 1:5,000) and HRP-conjugated goat anti-rabbit secondary antibody (Cat#201, 1:20,000) respectively. Image was developed using NaQ™ ECL Substrate Kit (Cat#716).

SUPPORT

SUPPORT@GENUINBIOTECH.COM
TEL: +1-540-855-7041

ORDERS

SALES@GENUINBIOTECH.COM
FAX: +1-540-855-7041

WWW.GENUINBIOTECH.COM