

# Anti-AVEN Recombinant Rabbit Monoclonal Antibody



**Catalog #: 5505**

## Aliases

AVEN; Apoptosis And Caspase Activation Inhibitor; Cell Death Regulator Aven; PDCD12; Programmed Cell Death 12; Apoptosis, Caspase Activation Inhibitor

## Background

Gene Name: AVEN

NCBI Gene Entry: [57099](#)

UniProt Entry: [Q9NQS1](#)

## Application Information

Molecular Weight: Predicted, 39 kDa; observed, 50 kDa

Clonality: Rabbit monoclonal antibody

Clone ID: 25GB1810

Species Reactivity: Human, mouse, rat

Applications Tested: Western blotting (WB), flow cytometry (FCM)

## Immunogen

A synthesized peptide derived from human AVEN

## Isotype

Rabbit IgG

## Storage Buffer

Supplied in PBS (pH 7.4) containing 50% glycerol, and 0.02% sodium azide.

## Storage

Store at -20 °C for one year.

## Recommended Dilutions

Western Blotting (WB): 1:1,000-1:5,000

Flow Cytometry (FCM): 1:2,000

**Note:** This product is for research use only.

## Validation Data

---

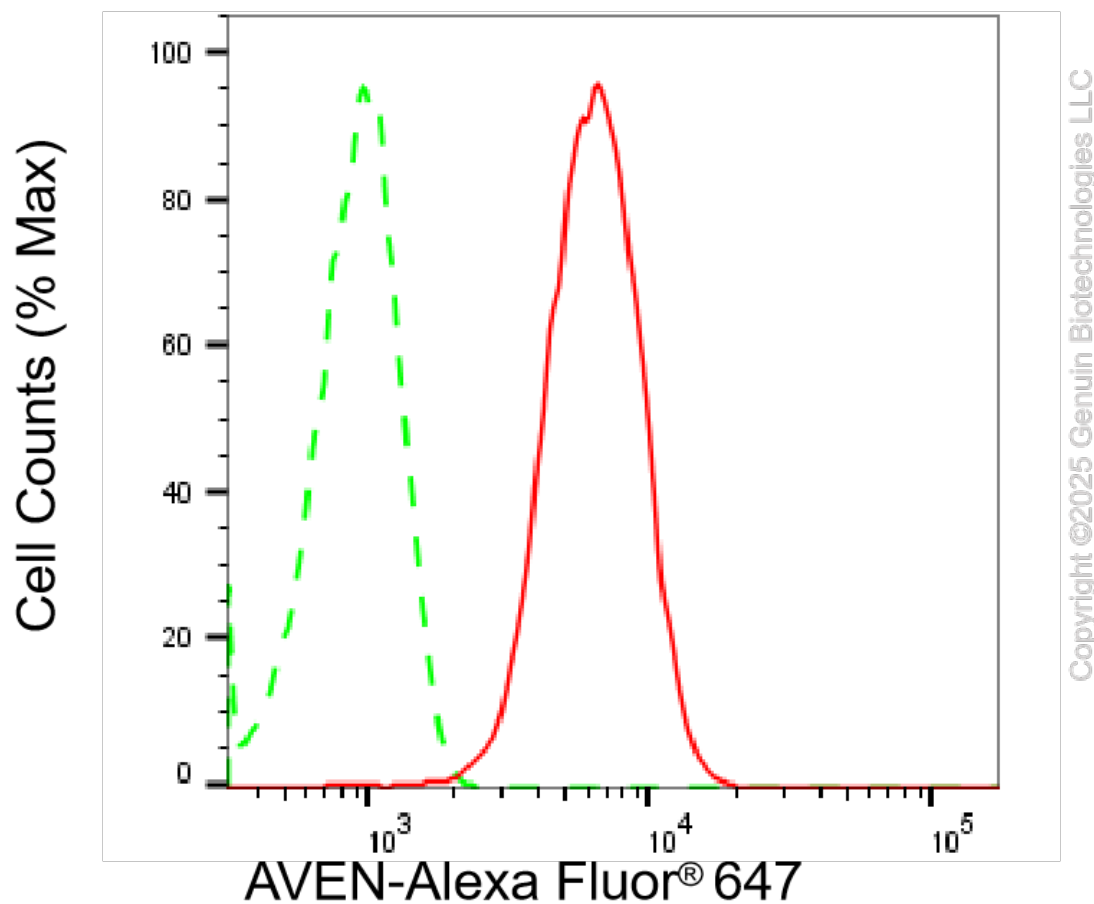
### SUPPORT

SUPPORT@GENUINBIOTECH.COM  
TEL: +1-540-855-7041

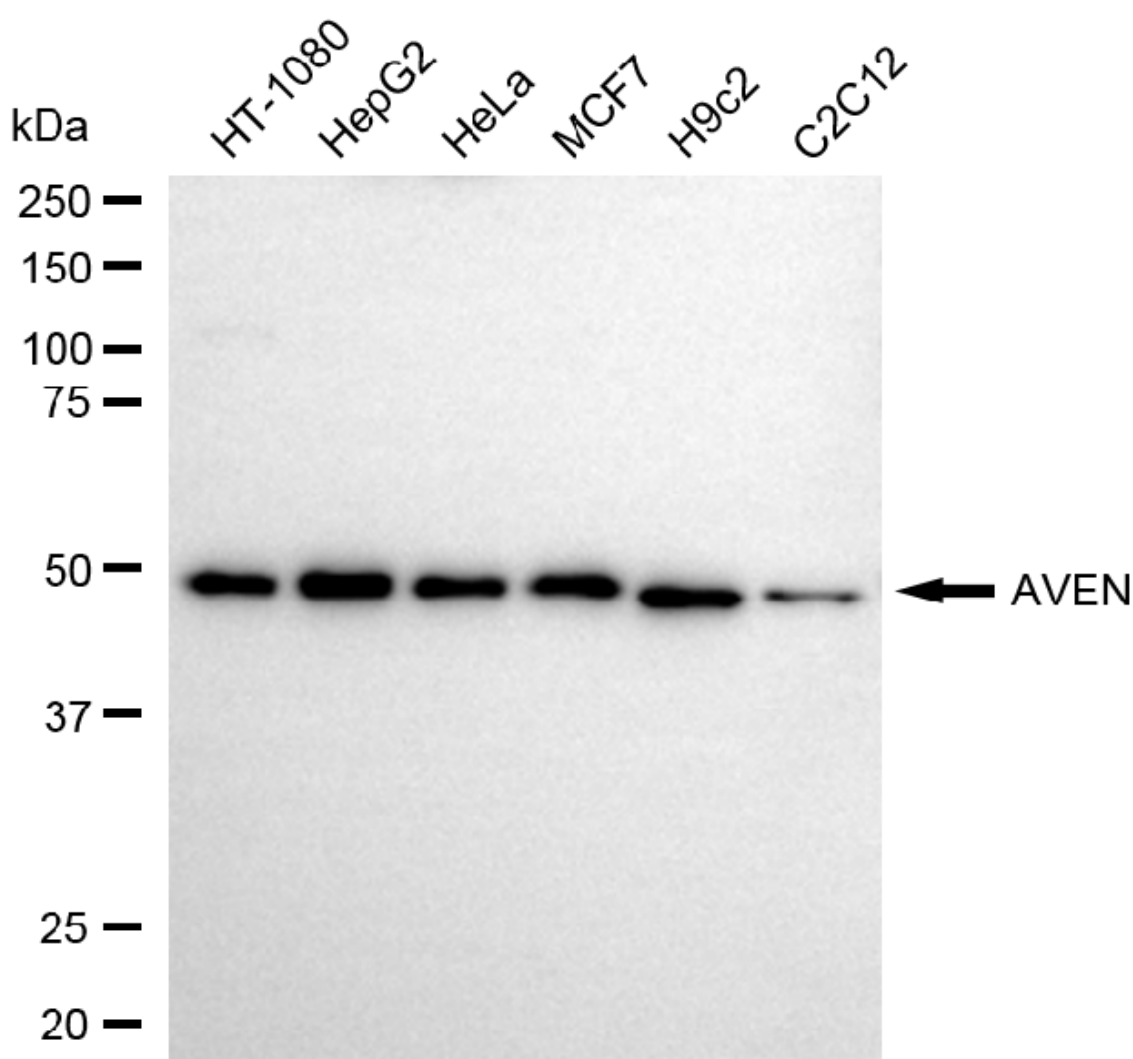
### ORDERS

SALES@GENUINBIOTECH.COM  
FAX: +1-540-855-7041

[WWW.GENUINBIOTECH.COM](http://WWW.GENUINBIOTECH.COM)



Flow cytometric analysis of AVEN expression in HepG2 cells using anti-AVEN antibody (Cat#5505, 1:2,000). Green, isotype control; red, AVEN.



Copyright ©2025 Genuin Biotechnologies LLC

Western blotting analysis using anti-AVEN antibody (Cat#5505). Total cell lysates (30 µg) from various cell lines were loaded and separated by SDS-PAGE. The blot was incubated with anti-AVEN antibody (Cat#5505, 1:5,000) and HRP-conjugated goat anti-rabbit secondary antibody (Cat#201, 1:20,000) respectively. Image was developed using NaQ™ ECL Substrate Kit (Cat#716).