

Anti-CD6 Recombinant Rabbit Monoclonal Antibody



Catalog #: 5506

Aliases

CD6; CD6 Molecule; CD6 Antigen; Tp120; T-Cell Differentiation Antigen CD6; T12; TP120

Background

Gene Name: CD6

NCBI Gene Entry: [923](#)

UniProt Entry: [P30203](#)

Application Information

Molecular Weight: Predicted, 72 kDa; observed, 70-150 kDa

Clonality: Rabbit monoclonal antibody

Clone ID: 25GB1815

Species Reactivity: Human

Applications Tested: Western blotting (WB), flow cytometry (FCM)

Immunogen

A synthesized peptide derived from human CD6

Isotype

Rabbit IgG

Storage Buffer

Supplied in PBS (pH 7.4) containing 50% glycerol, and 0.02% sodium azide.

Storage

Store at -20 °C for one year.

Recommended Dilutions

Western Blotting (WB): 1:1,000-1:5,000

Flow Cytometry (FCM): 1:2,000

Note: This product is for research use only.

Validation Data

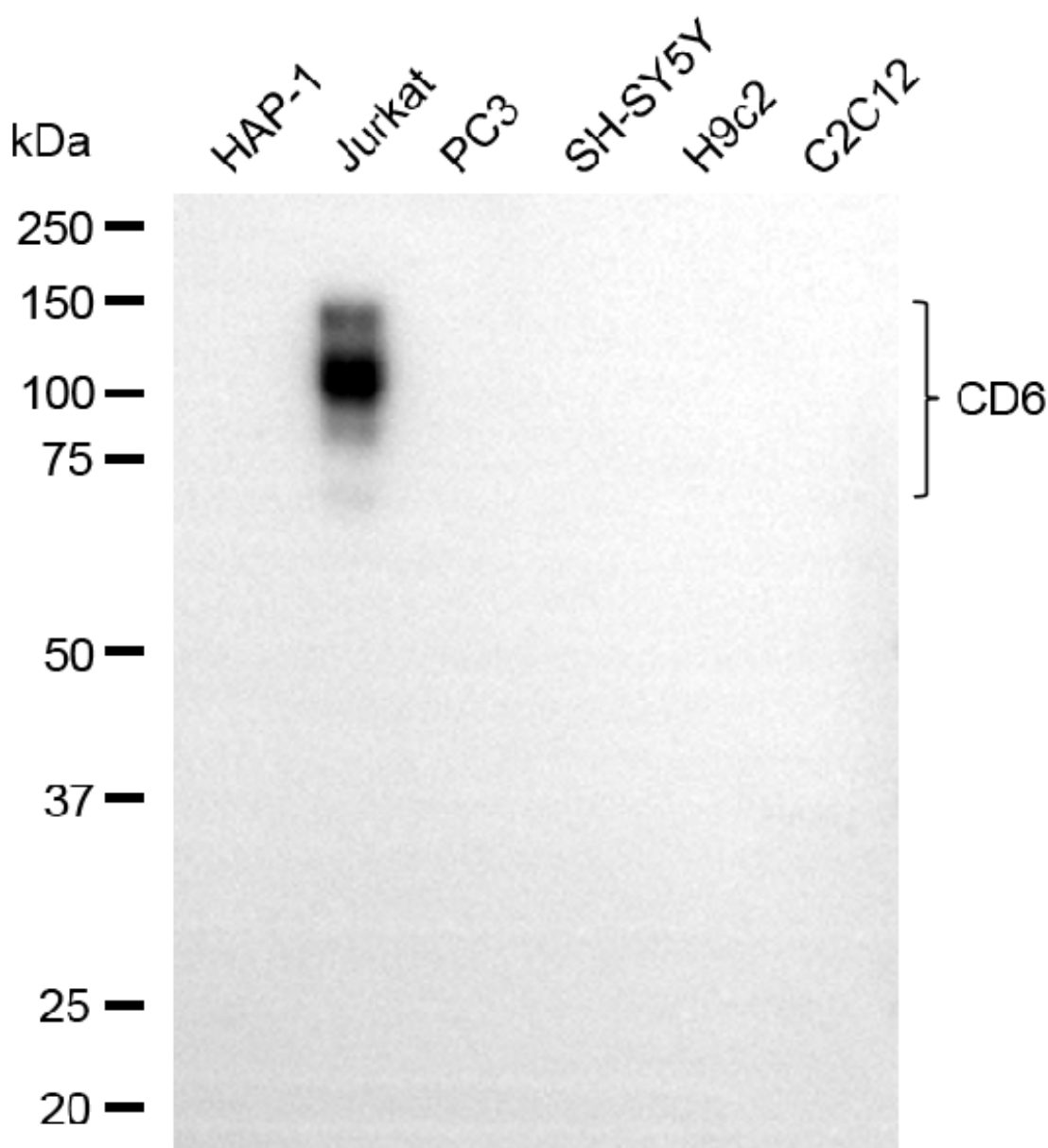
SUPPORT

SUPPORT@GENUINBIOTECH.COM
TEL: +1-540-855-7041

ORDERS

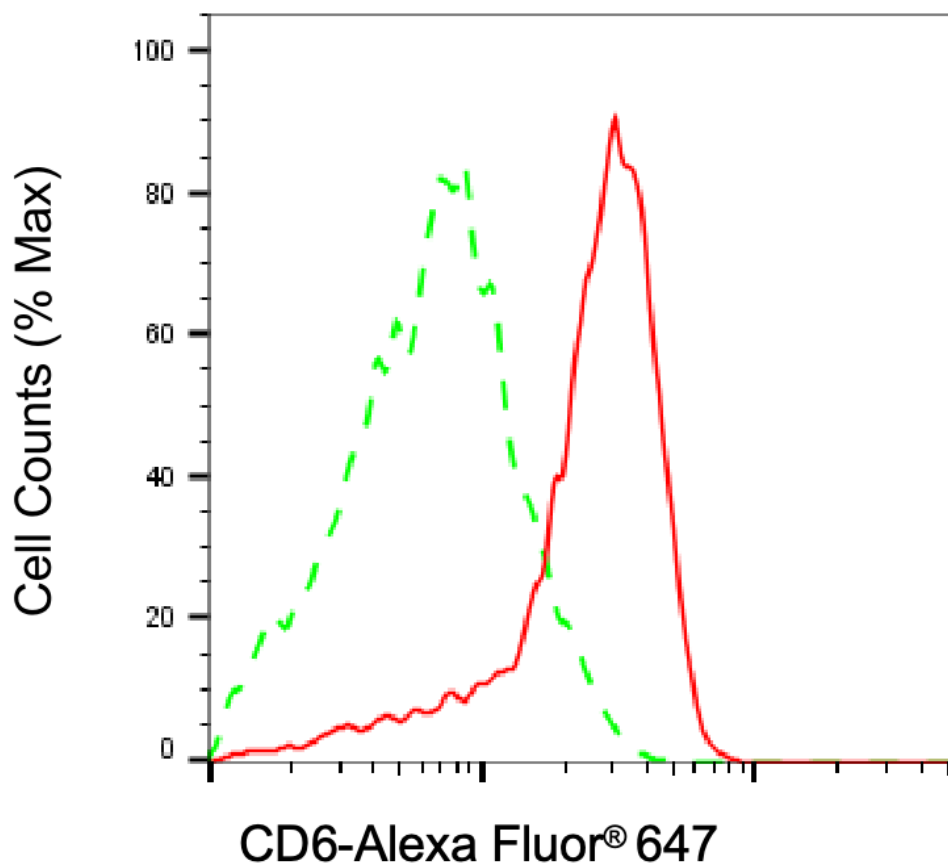
SALES@GENUINBIOTECH.COM
FAX: +1-540-855-7041

WWW.GENUINBIOTECH.COM



Copyright ©2025 Genuin Biotechnologies LLC

Western blotting analysis using anti-CD6 antibody (Cat#5506). Total cell lysates (30 µg) from various cell lines were loaded and separated by SDS-PAGE. The blot was incubated with anti-CD6 antibody (Cat#5506, 1:5,000) and HRP-conjugated goat anti-rabbit secondary antibody (Cat#201, 1:20,000) respectively. Image was developed using FeQ™ ECL Substrate Kit (Cat#226).



Copyright ©2025 Genuin Biotechnologies LLC

Flow cytometric analysis of CD6 expression in Jurkat cells using anti-CD6 antibody (Cat#5506, 1:2,000). Green, isotype control; red, CD6.