

Anti-ABI2 Recombinant Rabbit Monoclonal Antibody



Catalog #: 5507

Aliases

ABI2, Abl Interactor 2; AblBP3; ArgBP1A; SSH3BP2; ABI-2; AIP-1; ABI2B; Arg-Binding Protein 1; Abelson Interactor 2; ArgBP1; Abl-Interacting Protein 1 (SH3-Containing Protein); Arg Protein Tyrosine Kinase-Binding Protein; Abl-Interactor Protein 2b; Abl Binding Protein 3; Abl-Binding Protein 3; Abl-Interactor 2; ArgBPIB; ARGBPIA; Abi-2; AIP1

Background

Gene Name: ABI2

NCBI Gene Entry: [10152](#)

UniProt Entry: [Q9NYB9](#)

Application Information

Molecular Weight: Predicted, 56 kDa; observed, 70 kDa

Clonality: Rabbit monoclonal antibody

Clone ID: 25GB1820

Species Reactivity: Human, mouse, rat

Applications Tested: Western blotting (WB), flow cytometry (FCM), immunocytochemistry (IC)

Immunogen

A synthesized peptide derived from human ABI2

Isotype

Rabbit IgG

Storage Buffer

Supplied in PBS (pH 7.4) containing 50% glycerol, and 0.02% sodium azide.

Storage

Store at -20 °C for one year.

Recommended Dilutions

Western Blotting (WB): 1:1,000-1:5,000

Flow Cytometry (FCM): 1:2,000

Immunocytochemistry (IC): 1:100-1:1,000

SUPPORT

SUPPORT@GENUINBIOTECH.COM
TEL: +1-540-855-7041

ORDERS

SALES@GENUINBIOTECH.COM
FAX: +1-540-855-7041

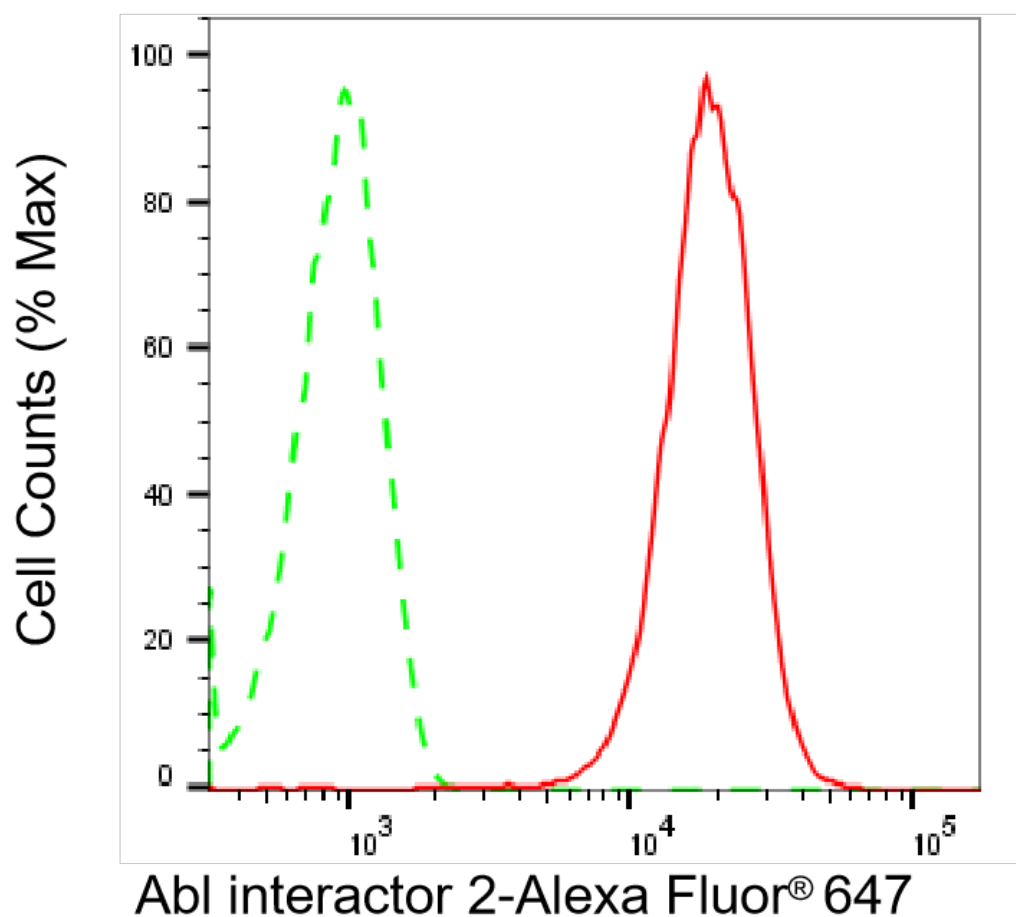
WWW.GENUINBIOTECH.COM

Anti-ABI2 Recombinant Rabbit Monoclonal Antibody

PAGE 2

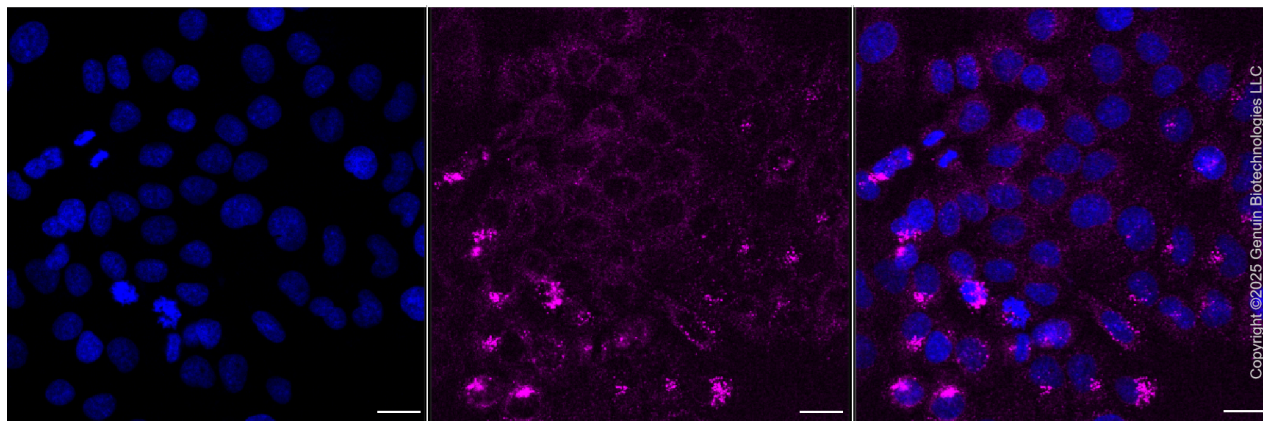
Note: This product is for research use only.

Validation Data



Copyright ©2025 Genuin Biotechnologies LLC

Flow cytometric analysis of Abl interactor 2 expression in HepG2 cells using anti-Abl interactor 2 antibody (Cat#5507, 1:2,000). Green, isotype control; red, Abl interactor 2.



Copyright ©2025 Genuin Biotechnologies LLC

SUPPORT

SUPPORT@GENUINBIOTECH.COM
TEL: +1-540-855-7041

ORDERS

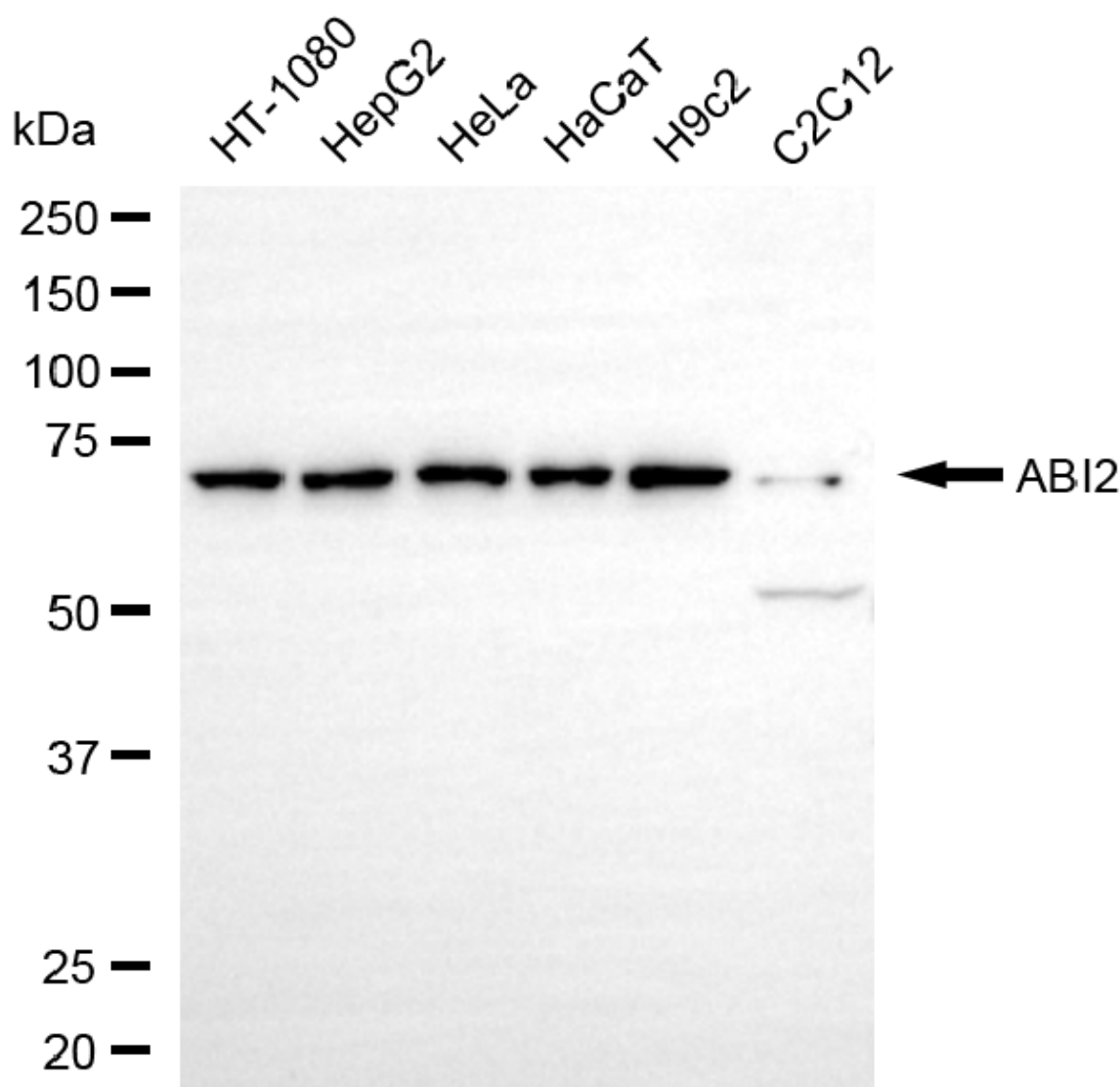
SALES@GENUINBIOTECH.COM
FAX: +1-540-855-7041

WWW.GENUINBIOTECH.COM

Anti-ABI2 Recombinant Rabbit Monoclonal Antibody

PAGE 3

Immunocytochemical staining of HepG2 cells with anti-Abl interactor 2 antibody (Cat#5507, 1:1,000). Nuclei were stained blue with DAPI; Abl interactor 2 was stained magenta with Alexa Fluor® 647. Images were taken using Leica stellaris 5. Protein abundance based on laser Intensity and smart gain: Medium. Scale bar, 20 µm.



Copyright ©2025 Genuin Biotechnologies LLC

Western blotting analysis using anti-abl interactor 2 antibody (Cat#5507). Total cell lysates (30 µg) from various cell lines were loaded and separated by SDS-PAGE. The blot was incubated with anti-abl interactor 2 antibody (Cat#5507, 1:5,000) and HRP-conjugated goat anti-rabbit secondary antibody (Cat#201, 1:20,000) respectively. Image was developed using FeQ™ ECL Substrate Kit (Cat#226).

SUPPORT

SUPPORT@GENUINBIOTECH.COM
TEL: +1-540-855-7041

ORDERS

SALES@GENUINBIOTECH.COM
FAX: +1-540-855-7041

WWW.GENUINBIOTECH.COM