

Anti-UBA52 Recombinant Rabbit Monoclonal Antibody



Catalog #: 5508

Aliases

UBA52; Ubiquitin A-52 Residue Ribosomal Protein Fusion Product 1; CEP52; HUBCEP52; RPL40; L40; Ubiquitin-Ribosomal Protein EL40 Fusion Protein; Ubiquitin Carboxyl Extension Protein 52; Ubiquitin-52 Amino Acid Fusion Protein; Ubiquitin-CEP52; MGC126879; MGC126881; MGC57125; Ubiquitin-60S Ribosomal Protein L40; 60S Ribosomal Protein L40; Ribosomal Protein L40; UBCEP2

Background

Gene Name: UBA52

NCBI Gene Entry: [7311](#)

UniProt Entry: [P62987](#)

Application Information

Molecular Weight: Predicted, 15 kDa; observed, 10 kDa

Clonality: Rabbit monoclonal antibody

Clone ID: 25GB1825

Species Reactivity: Human, mouse, rat

Applications Tested: Western blotting (WB), flow cytometry (FCM), immunocytochemistry (IC)

Immunogen

A synthesized peptide derived from human UBA52

Isotype

Rabbit IgG

Storage Buffer

Supplied in PBS (pH 7.4) containing 50% glycerol, and 0.02% sodium azide.

Storage

Store at -20 °C for one year.

Recommended Dilutions

Western Blotting (WB): 1:1,000-1:5,000

Flow Cytometry (FCM): 1:2,000

Immunocytochemistry (IC): 1:100-1:1,000

SUPPORT

SUPPORT@GENUINBIOTECH.COM
TEL: +1-540-855-7041

ORDERS

SALES@GENUINBIOTECH.COM
FAX: +1-540-855-7041

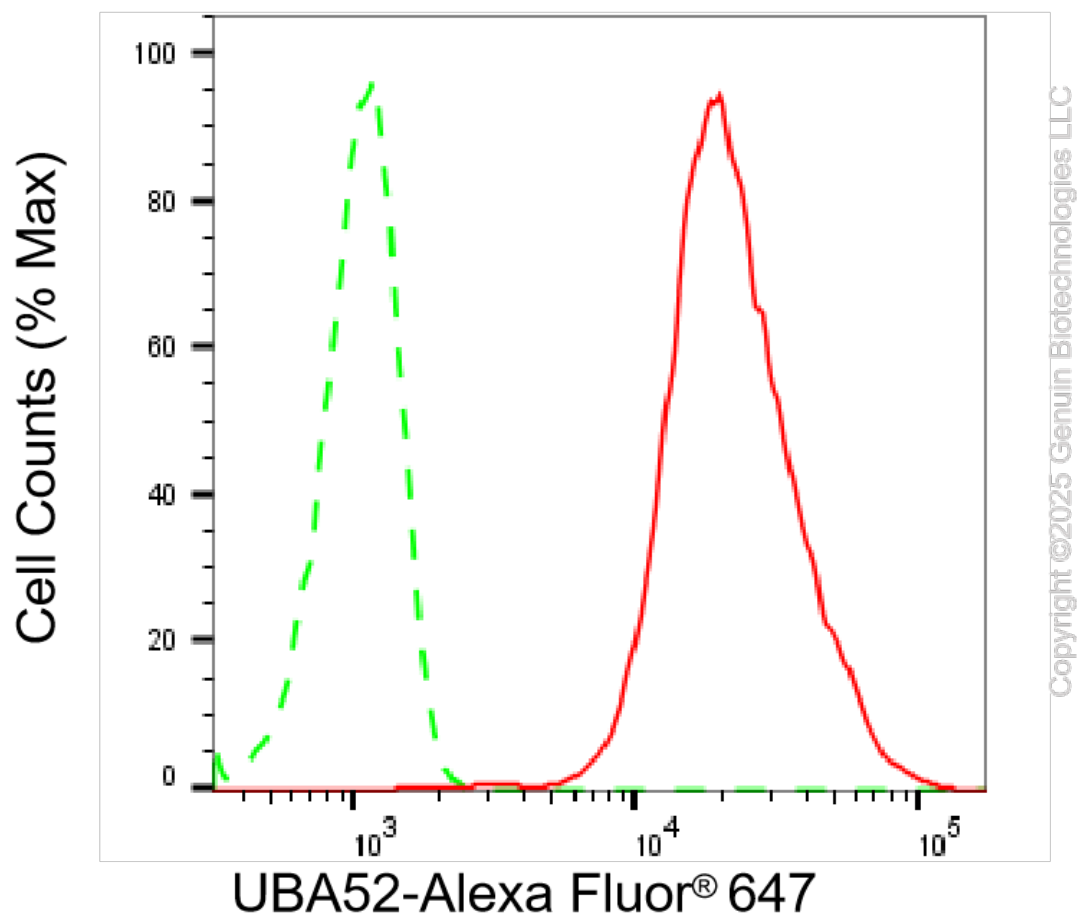
WWW.GENUINBIOTECH.COM

Anti-UBA52 Recombinant Rabbit Monoclonal Antibody

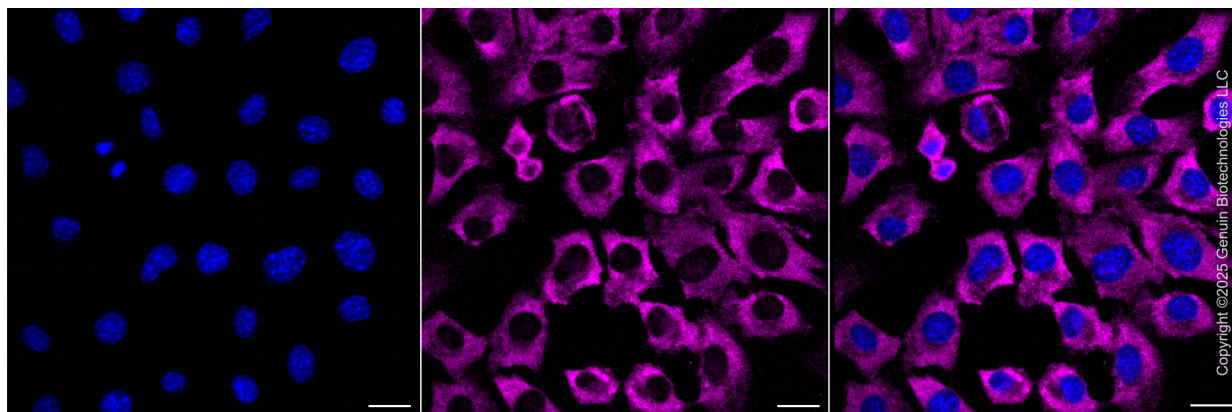
PAGE 2

Note: This product is for research use only.

Validation Data



Flow cytometric analysis of UBA52 expression in C2C12 cells using anti-UBA52 antibody (Cat#5508, 1:2,000). Green, isotype control; red, UBA52.



SUPPORT

SUPPORT@GENUINBIOTECH.COM
TEL: +1-540-855-7041

ORDERS

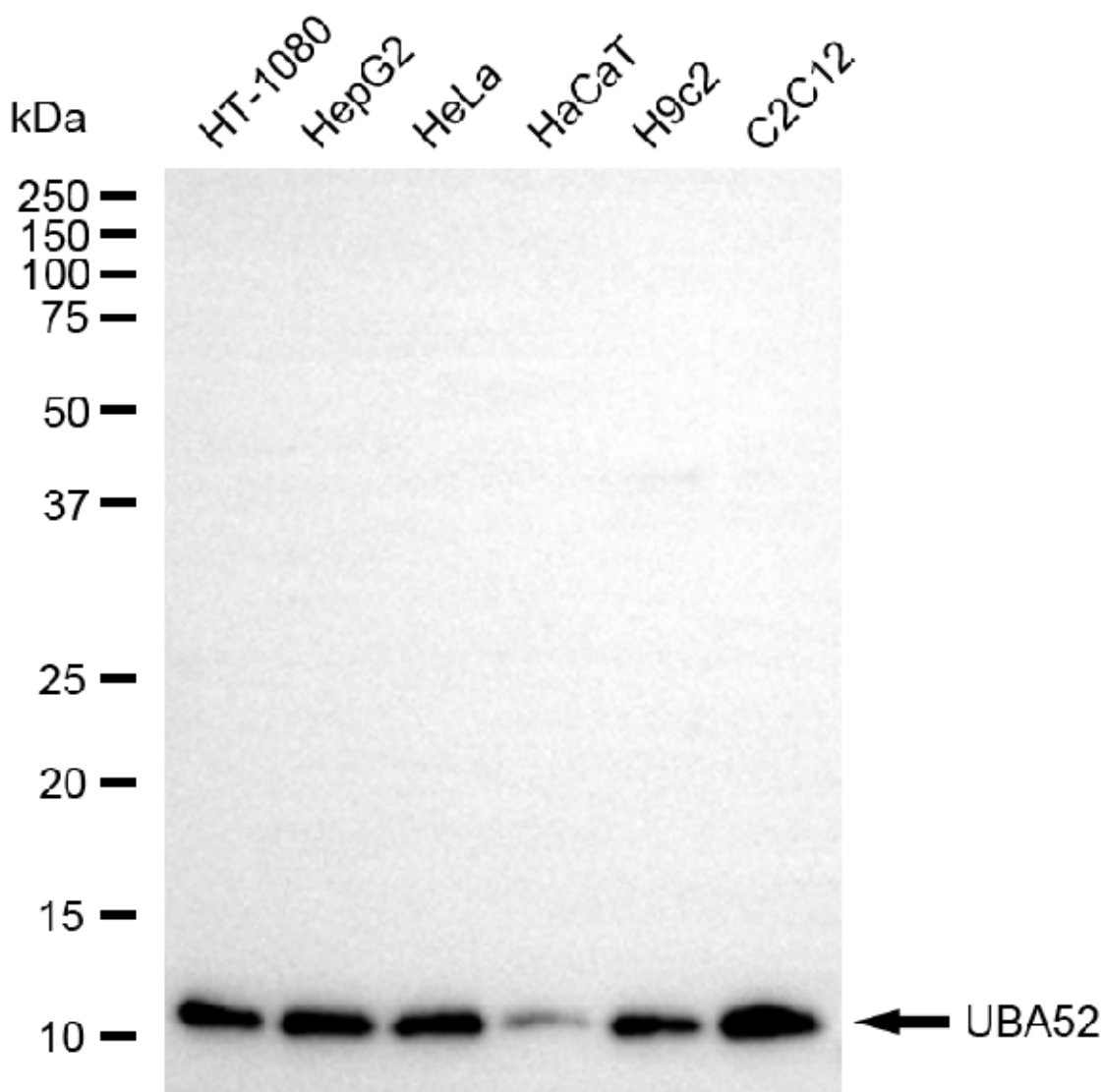
SALES@GENUINBIOTECH.COM
FAX: +1-540-855-7041

WWW.GENUINBIOTECH.COM

Anti-UBA52 Recombinant Rabbit Monoclonal Antibody

PAGE 3

Immunocytochemical staining of H9C2 cells with anti-UBA52 antibody (Cat#5508, 1:1,000). Nuclei were stained blue with DAPI; UBA52 was stained magenta with Alexa Fluor® 647. Images were taken using Leica stellaris 5. Protein abundance based on laser Intensity and smart gain: Medium. Scale bar, 20 μ m.



Western blotting analysis using anti-UBA52 antibody (Cat#5508). Total cell lysates (10 μ g) from various cell lines were loaded and separated by SDS-PAGE. The blot was incubated with anti-UBA52 antibody (Cat#5508, 1:5,000) and HRP-conjugated goat anti-rabbit secondary antibody (Cat#201, 1:20,000) respectively. Image was developed using NaQ™ ECL Substrate Kit (Cat#716).

SUPPORT

SUPPORT@GENUINBIOTECH.COM
TEL: +1-540-855-7041

ORDERS

SALES@GENUINBIOTECH.COM
FAX: +1-540-855-7041

WWW.GENUINBIOTECH.COM