

Anti-CRTC1 Recombinant Rabbit Monoclonal Antibody



Catalog #: 5514

Aliases

CRTC1; CREB Regulated Transcription Coactivator 1; TORC1; KIAA0616; MECT1; Mucoepidermoid Carcinoma Translocated Protein 1; CREB-Regulated Transcription Coactivator 1; FLJ14027; TORC-1; WAMTP1; Transducer Of Regulated CAMP Response Element-Binding Protein (CREB) 1; Transducer Of Regulated CAMP Response Element-Binding Protein 1; Transducer Of Regulated CAMP Response Element-Binding Protein; Mucoepidermoid Carcinoma Translocated 1; Transducer Of CREB Protein 1; Mastermind-Like Protein 2; MAML2; Mam-2

Background

Gene Name: CRTC1

NCBI Gene Entry: [23373](#)

UniProt Entry: [Q6UUV9](#)

Application Information

Molecular Weight: Predicted, 67 kDa; observed, 68-90 kDa

Clonality: Rabbit monoclonal antibody

Clone ID: 25GB1850

Species Reactivity: Human

Applications Tested: Western blotting (WB), flow cytometry (FCM), immunocytochemistry (IC)

Immunogen

A synthesized peptide derived from human CRTC1

Isotype

Rabbit IgG

Storage Buffer

Supplied in PBS (pH 7.4) containing 50% glycerol, and 0.02% sodium azide.

Storage

Store at -20 °C for one year.

Recommended Dilutions

Western Blotting (WB): 1:1,000-1:5,000

Flow Cytometry (FCM): 1:2,000

Immunocytochemistry (IC): 1:100-1:1,000

SUPPORT

SUPPORT@GENUINBIOTECH.COM
TEL: +1-540-855-7041

ORDERS

SALES@GENUINBIOTECH.COM
FAX: +1-540-855-7041

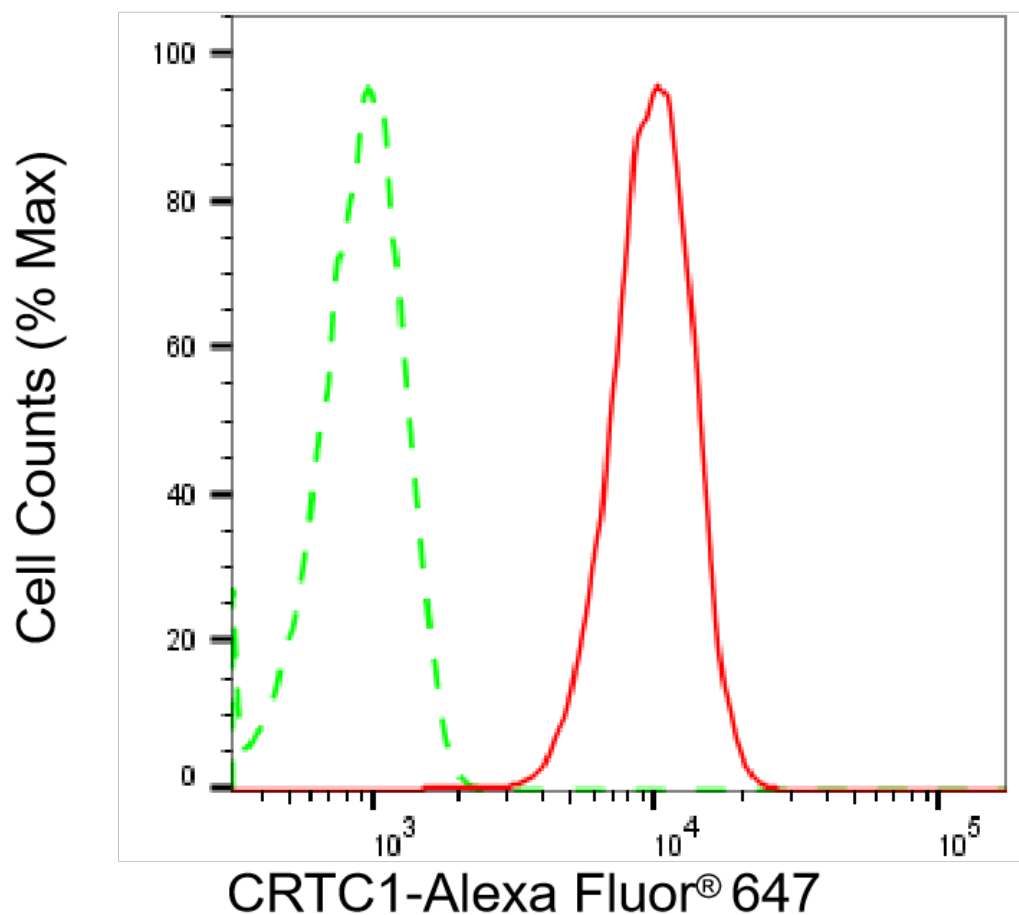
WWW.GENUINBIOTECH.COM

Anti-CRTC1 Recombinant Rabbit Monoclonal Antibody

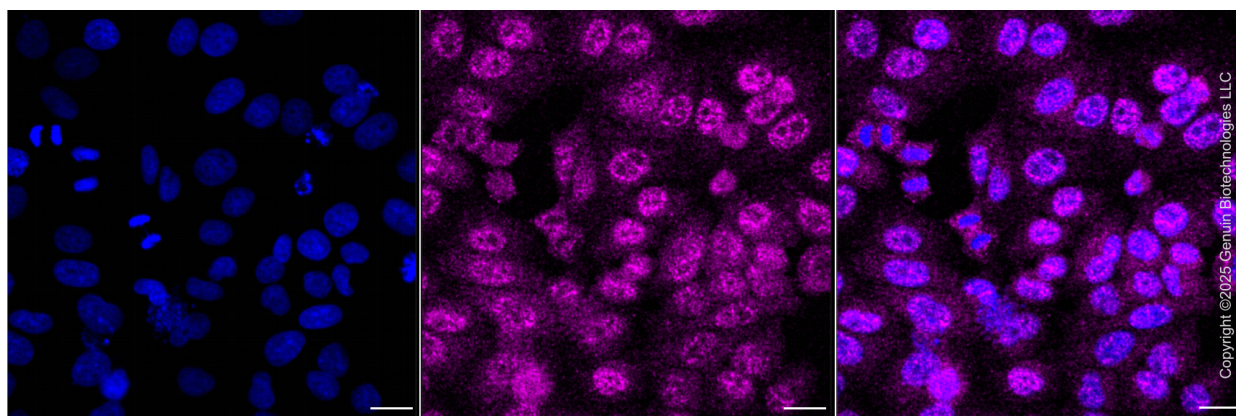
PAGE 2

Note: This product is for research use only.

Validation Data



Flow cytometric analysis of CRTC1 expression in HepG2 cells using anti-CRTC1 antibody (Cat#5514, 1:2,000). Green, isotype control; red, CRTC1.



SUPPORT

SUPPORT@GENUINBIOTECH.COM
TEL: +1-540-855-7041

ORDERS

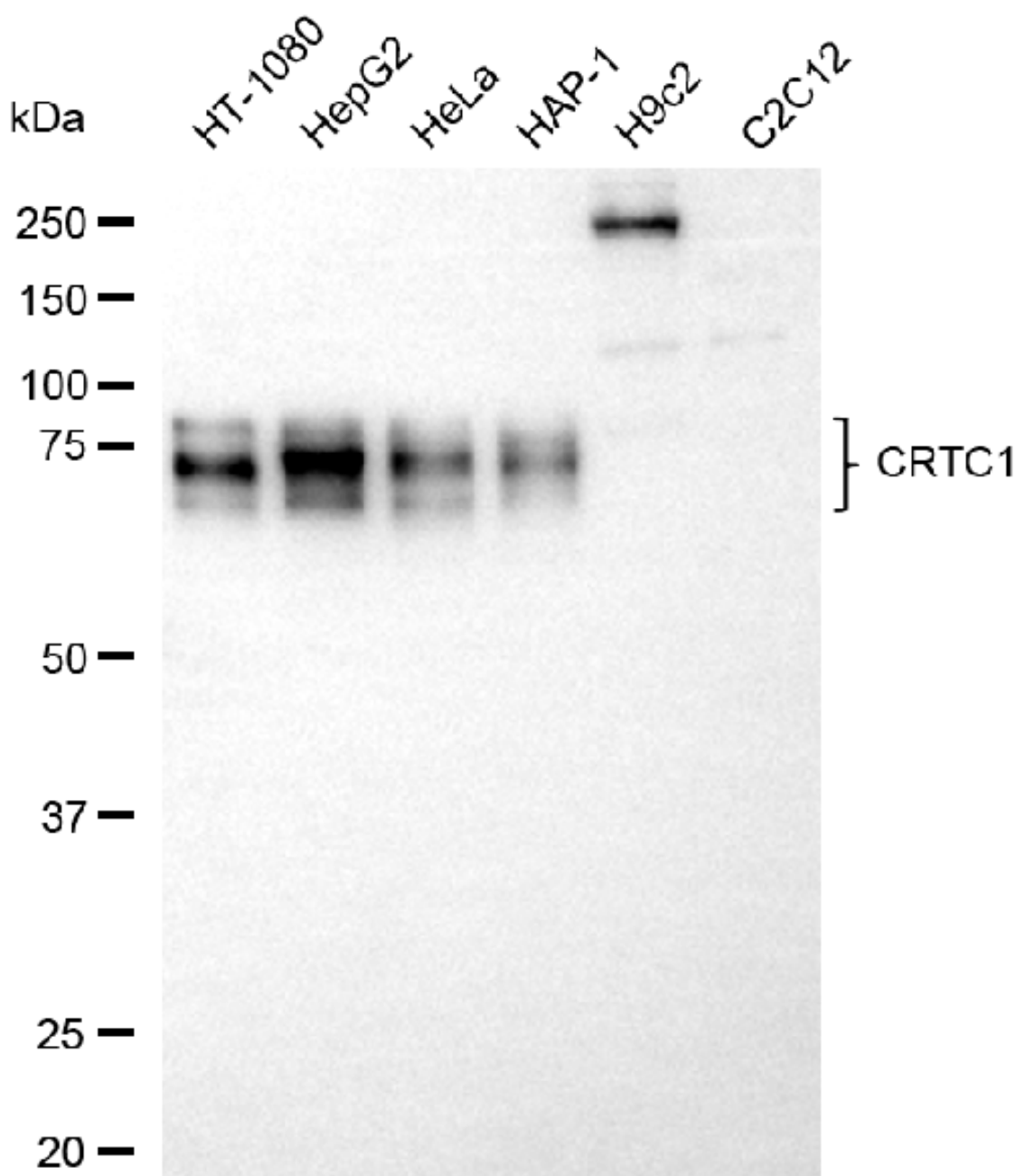
SALES@GENUINBIOTECH.COM
FAX: +1-540-855-7041

WWW.GENUINBIOTECH.COM

Anti-CRTC1 Recombinant Rabbit Monoclonal Antibody

PAGE 3

Immunocytochemical staining of HepG2 cells with anti-CRTC1 antibody (Cat#5514, 1:1,000). Nuclei were stained blue with DAPI; CRTC1 was stained magenta with Alexa Fluor® 647. Images were taken using Leica stellaris 5. Protein abundance based on laser Intensity and smart gain: Medium. Scale bar, 20 μ m.



Copyright ©2025 Genuin Biotechnologies LLC

Western blotting analysis using anti-CRTC1 antibody (Cat#5514). Total cell lysates (30 μ g) from various cell lines were loaded and separated by SDS-PAGE. The blot was incubated with anti-CRTC1 antibody (Cat#5514, 1:5,000) and HRP-conjugated goat anti-rabbit secondary antibody (Cat#201, 1:20,000) respectively. Image was developed using NaQ™ ECL Substrate Kit (Cat#716).

SUPPORT

SUPPORT@GENUINBIOTECH.COM
TEL: +1-540-855-7041

ORDERS

SALES@GENUINBIOTECH.COM
FAX: +1-540-855-7041

WWW.GENUINBIOTECH.COM