

Anti-PTRH2 Recombinant Rabbit Monoclonal Antibody



Catalog #: 5518

Aliases

PTRH2; Peptidyl-TRNA Hydrolase 2; BIT1; PTH2; CGI-147; CFAP37; Cilia And Flagella Associated Protein 37; Peptidyl-TRNA Hydrolase 2, Mitochondrial; Bcl-2 Inhibitor Of Transcription 1; EC 3.1.1.29; PTH 2; Bcl-2 Inhibitor Of Transcription; IMNEPD; PTH

Background

Gene Name: PTRH2

NCBI Gene Entry: [51651](#)

UniProt Entry: [Q9Y3E5](#)

Application Information

Molecular Weight: Predicted, 19 kDa; observed, 19 kDa

Clonality: Rabbit monoclonal antibody

Clone ID: 25GB1870

Species Reactivity: Human

Applications Tested: Western blotting (WB), flow cytometry (FCM), immunocytochemistry (IC)

Immunogen

A synthesized peptide derived from human PTH 2

Isotype

Rabbit IgG

Storage Buffer

Supplied in PBS (pH 7.4) containing 50% glycerol, and 0.02% sodium azide.

Storage

Store at -20 °C for one year.

Recommended Dilutions

Western Blotting (WB): 1:1,000-1:5,000

Flow Cytometry (FCM): 1:2,000

Immunocytochemistry (IC): 1:100-1:1,000

Note: This product is for research use only.

SUPPORT

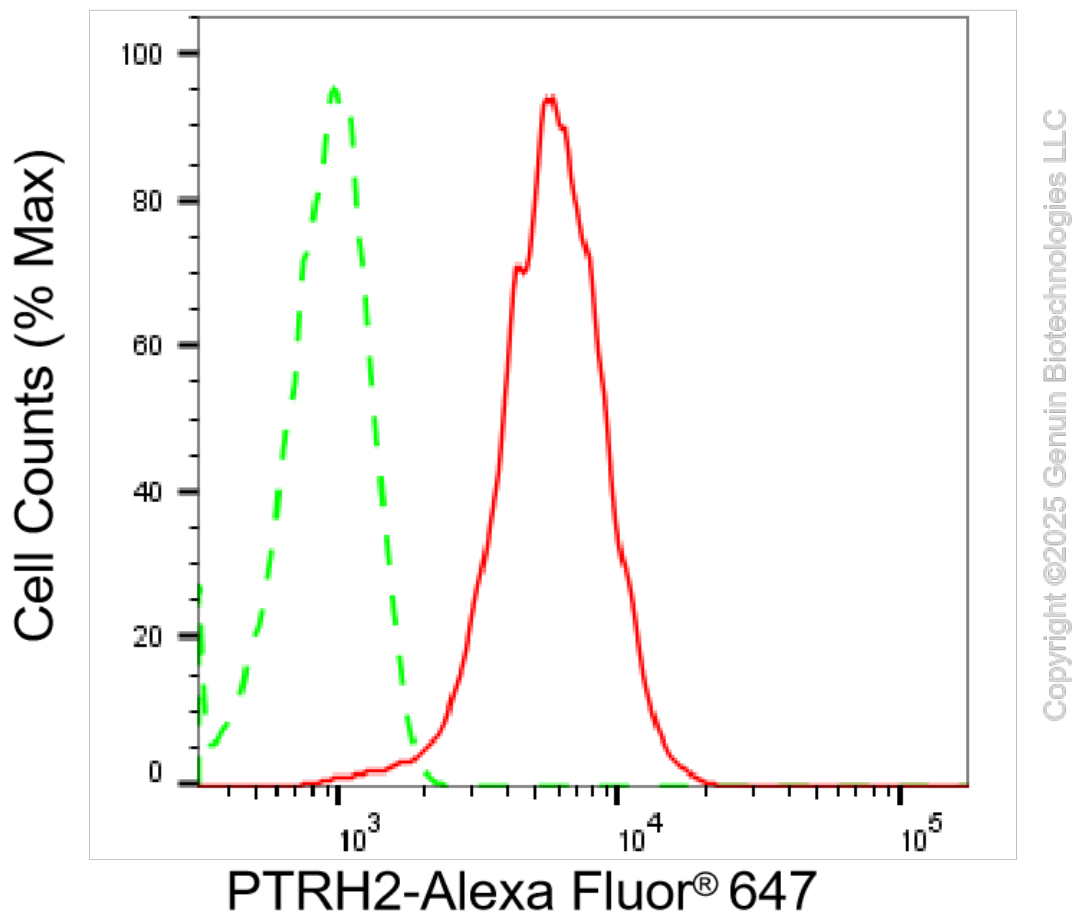
SUPPORT@GENUINBIOTECH.COM
TEL: +1-540-855-7041

ORDERS

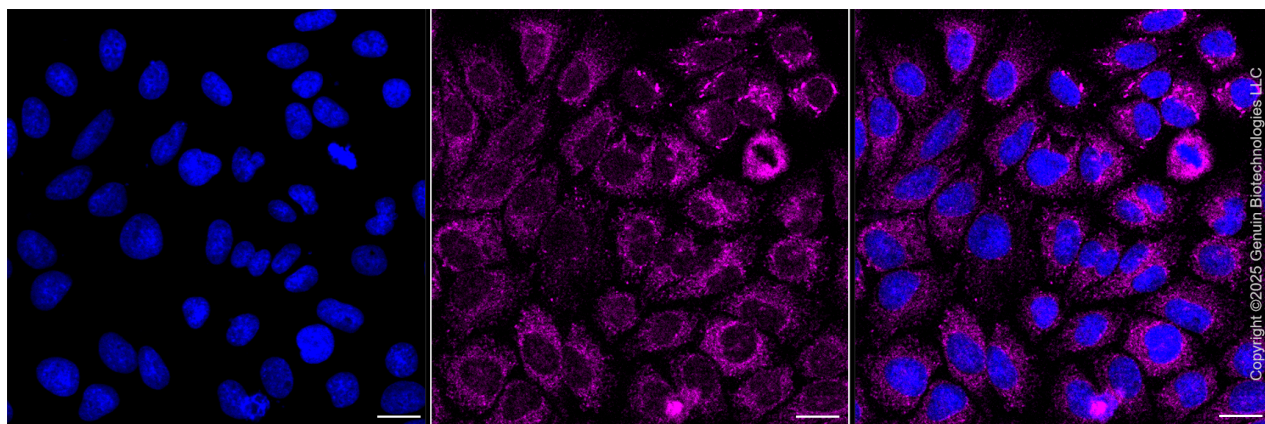
SALES@GENUINBIOTECH.COM
FAX: +1-540-855-7041

WWW.GENUINBIOTECH.COM

Validation Data



Flow cytometric analysis of PTRH2 expression in HepG2 cells using anti-PTRH2 antibody (Cat#5518, 1:2,000). Green, isotype control; red, PTRH2.



Immunocytochemical staining of HepG2 cells with anti-PTRH2 62 antibody (Cat#5518, 1:1,000). Nuclei were stained blue with DAPI; PTRH2 was stained magenta with Alexa Fluor® 647.

SUPPORT

SUPPORT@GENUINBIOTECH.COM
TEL: +1-540-855-7041

ORDERS

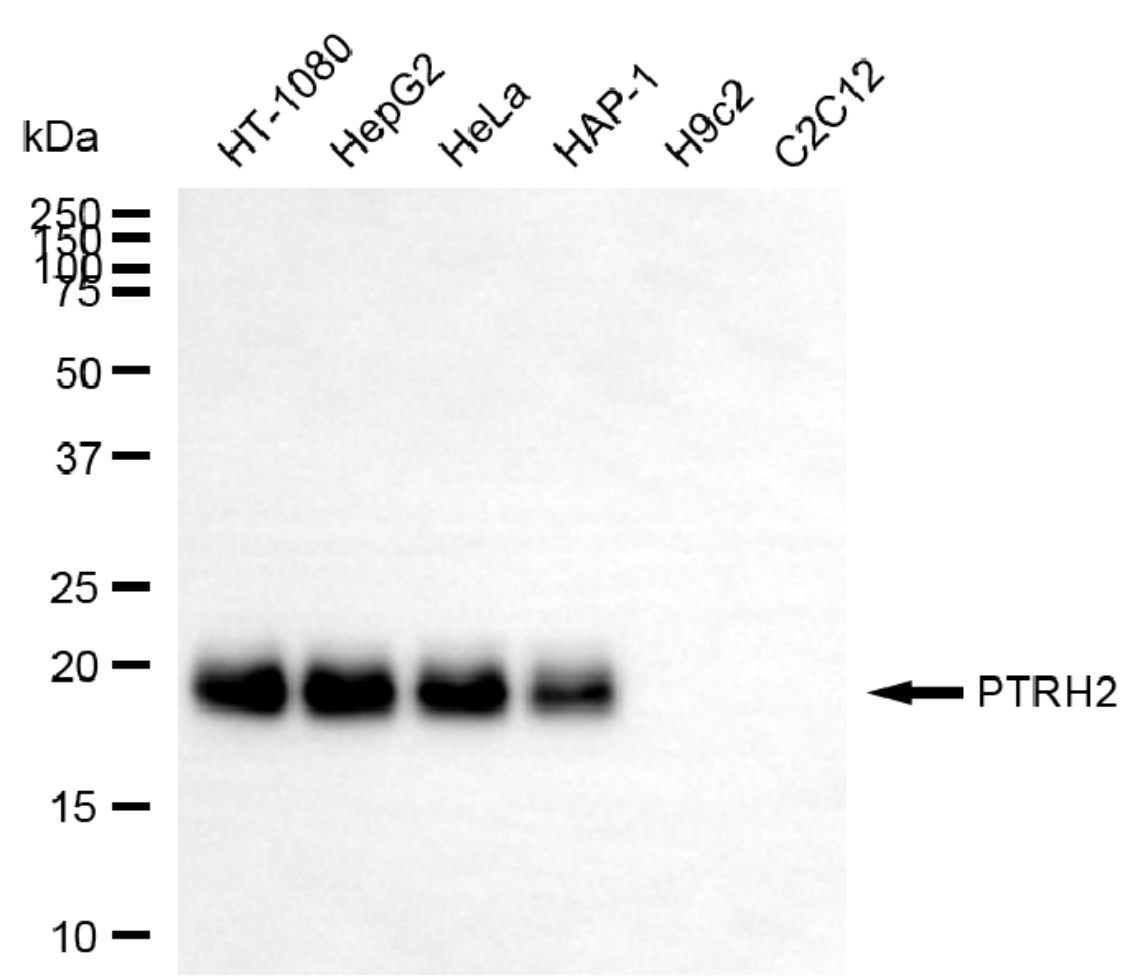
SALES@GENUINBIOTECH.COM
FAX: +1-540-855-7041

WWW.GENUINBIOTECH.COM

Anti-PTRH2 Recombinant Rabbit Monoclonal Antibody

PAGE 3

Images were taken using Leica stellaris 5. Protein abundance based on laser Intensity and smart gain: Medium. Scale bar, 20 μ m.



Copyright ©2025 Genuin Biotechnologies LLC

Western blotting analysis using anti-PTRH2 antibody (Cat#5518). Total cell lysates (30 μ g) from various cell lines were loaded and separated by SDS-PAGE. The blot was incubated with anti-PTRH2 antibody (Cat#5518, 1:5,000) and HRP-conjugated goat anti-rabbit secondary antibody (Cat#201, 1:20,000) respectively. Image was developed using NaQ™ ECL Substrate Kit (Cat#716).

SUPPORT

SUPPORT@GENUINBIOTECH.COM
TEL: +1-540-855-7041

ORDERS

SALES@GENUINBIOTECH.COM
FAX: +1-540-855-7041

WWW.GENUINBIOTECH.COM