

# Anti-FLII Recombinant Rabbit Monoclonal Antibody



**Catalog #: 5522**

## Aliases

FLII; FLII Actin Remodeling Protein; FLIL; Fli1; FLI; Flightless I Actin Binding Protein; Protein Flightless-1 Homolog; MGC39265; Flightless I (Drosophila) Homolog; Flightless I Homolog (Drosophila); Flightless I Homolog; CMD2J

## Background

Gene Name: FLII

NCBI Gene Entry: [2314](#)

UniProt Entry: [Q13045](#)

## Application Information

Molecular Weight: Predicted, 145 kDa; observed, 150 kDa

Clonality: Rabbit monoclonal antibody

Clone ID: 25GB1890

Species Reactivity: Human

Applications Tested: Western blotting (WB), flow cytometry (FCM)

## Immunogen

A synthesized peptide derived from human Flightless 1

## Isotype

Rabbit IgG

## Storage Buffer

Supplied in PBS (pH 7.4) containing 50% glycerol, and 0.02% sodium azide.

## Storage

Store at -20 °C for one year.

## Recommended Dilutions

Western Blotting (WB): 1:1,000-1:5,000

Flow Cytometry (FCM): 1:2,000

**Note:** This product is for research use only.

## Validation Data

---

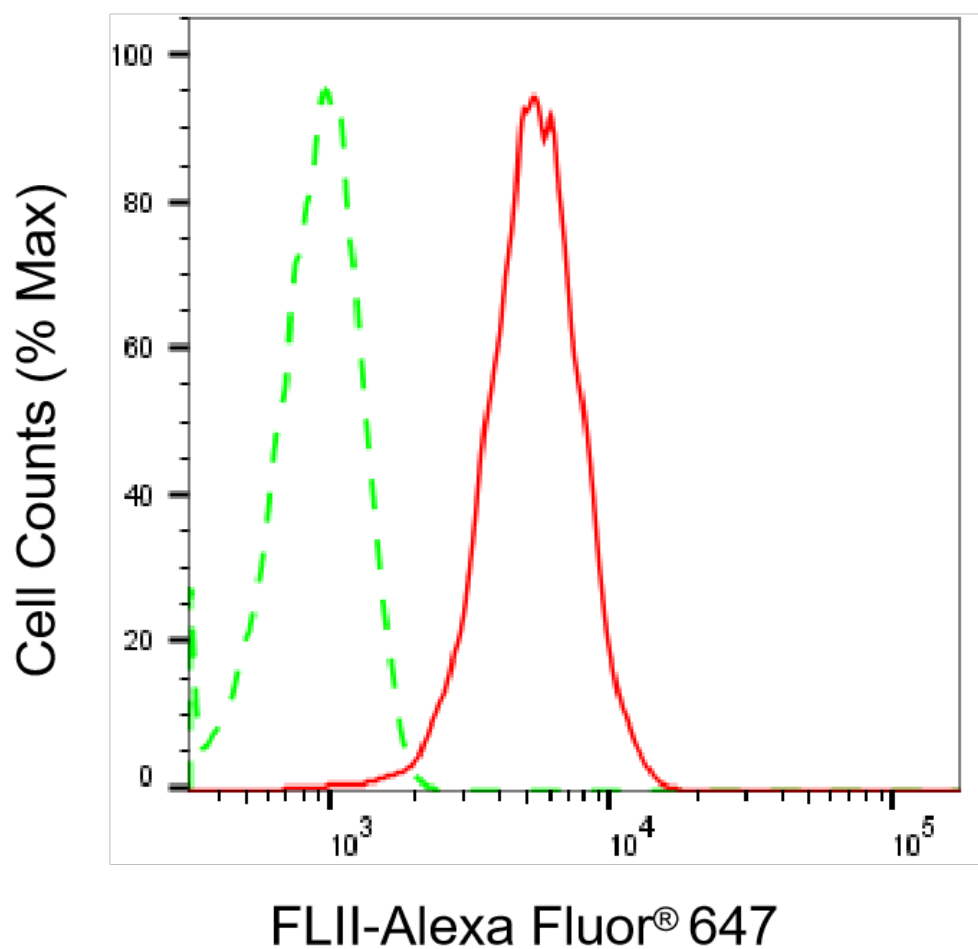
### SUPPORT

SUPPORT@GENUINBIOTECH.COM  
TEL: +1-540-855-7041

### ORDERS

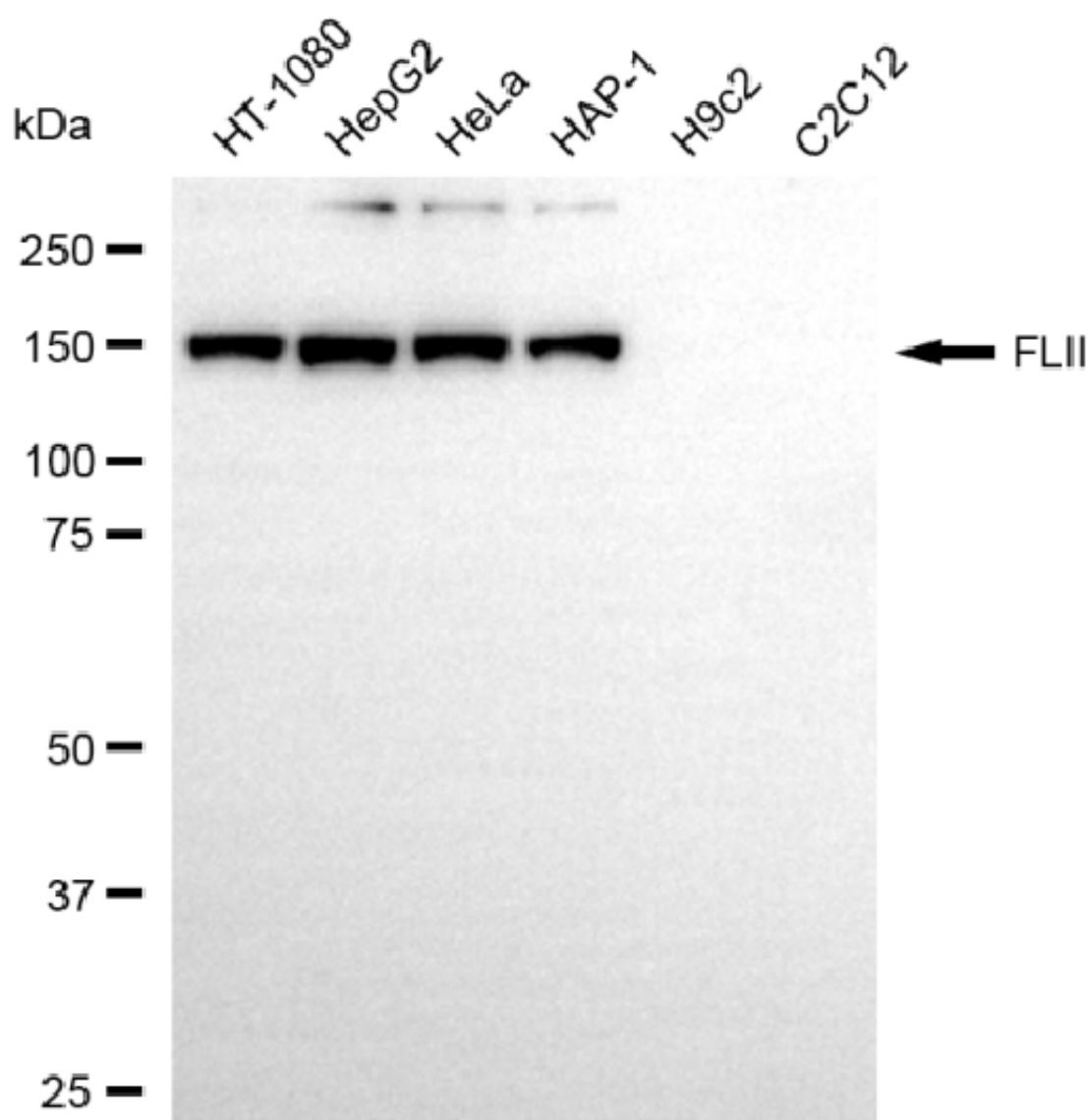
SALES@GENUINBIOTECH.COM  
FAX: +1-540-855-7041

[WWW.GENUINBIOTECH.COM](http://WWW.GENUINBIOTECH.COM)



Copyright ©2025 Genuin Biotechnologies LLC

Flow cytometric analysis of FLII expression in HepG2 cells using anti-FLII antibody (Cat#5522, 1:2,000). Green, isotype control; red, FLII.



Copyright ©2025 Genuin Biotechnologies LLC

Western blotting analysis using anti-FLII antibody (Cat#5522). Total cell lysates (30 µg) from various cell lines were loaded and separated by SDS-PAGE. The blot was incubated with anti-FLII antibody (Cat#5522, 1:5,000) and HRP-conjugated goat anti-rabbit secondary antibody (Cat#201, 1:20,000) respectively. Image was developed using NaQ™ ECL Substrate Kit (Cat#716).