

# Anti-MAP4K4 Recombinant Rabbit Monoclonal Antibody



**Catalog #: 5523**

## Aliases

MAP4K4; Mitogen-Activated Protein Kinase Kinase Kinase Kinase 4; HGK; NIK; FLH21957; Hepatocyte Progenitor Kinase-Like/Germinal Center Kinase-Like Kinase; MAPK/ERK Kinase Kinase Kinase 4; HPK/GCK-Like Kinase HGK; Nck-Interacting Kinase; MEK Kinase Kinase 4; EC 2.7.11.1; Epididymis Secretory Protein Li 31; Ste20 Group Protein Kinase HGK; HPK/GCK-Like Kinase; EC 2.7.11; HEL-S-31; KIAA0687; MEKKK 4; MEKKK4

## Background

Gene Name: MAP4K4

NCBI Gene Entry: [9448](#)

UniProt Entry: [O95819](#)

## Application Information

Molecular Weight: Predicted, 142 kDa; observed, 140-200 kDa

Clonality: Rabbit monoclonal antibody

Clone ID: 25GB1895

Species Reactivity: Human, mouse, rat

Applications Tested: Western blotting (WB), flow cytometry (FCM), immunocytochemistry (IC)

## Immunogen

A synthesized peptide derived from human MAP4K4

## Isotype

Rabbit IgG

## Storage Buffer

Supplied in PBS (pH 7.4) containing 50% glycerol, and 0.02% sodium azide.

## Storage

Store at -20 °C for one year.

## Recommended Dilutions

Western Blotting (WB): 1:1,000-1:5,000

Flow Cytometry (FCM): 1:2,000

Immunocytochemistry (IC): 1:100-1:1,000

---

### SUPPORT

SUPPORT@GENUINBIOTECH.COM  
TEL: +1-540-855-7041

### ORDERS

SALES@GENUINBIOTECH.COM  
FAX: +1-540-855-7041

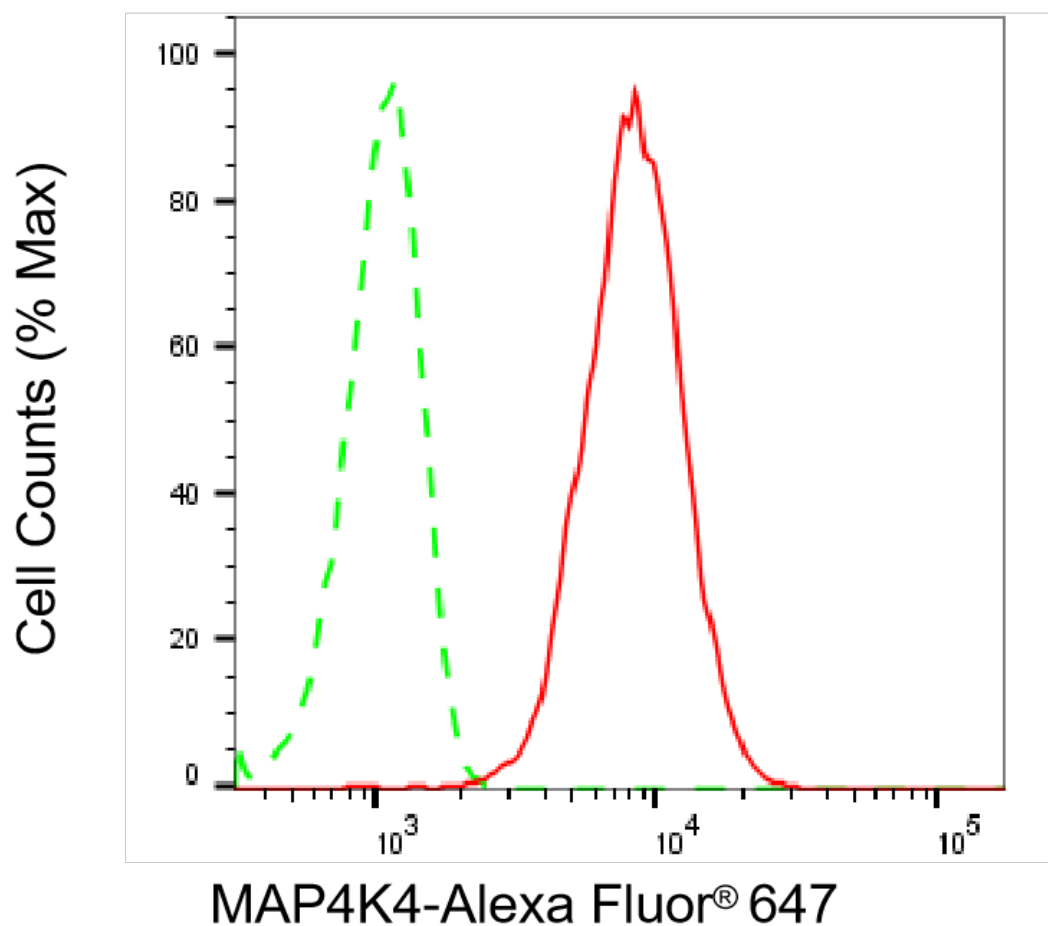
[WWW.GENUINBIOTECH.COM](http://WWW.GENUINBIOTECH.COM)

# Anti-MAP4K4 Recombinant Rabbit Monoclonal Antibody

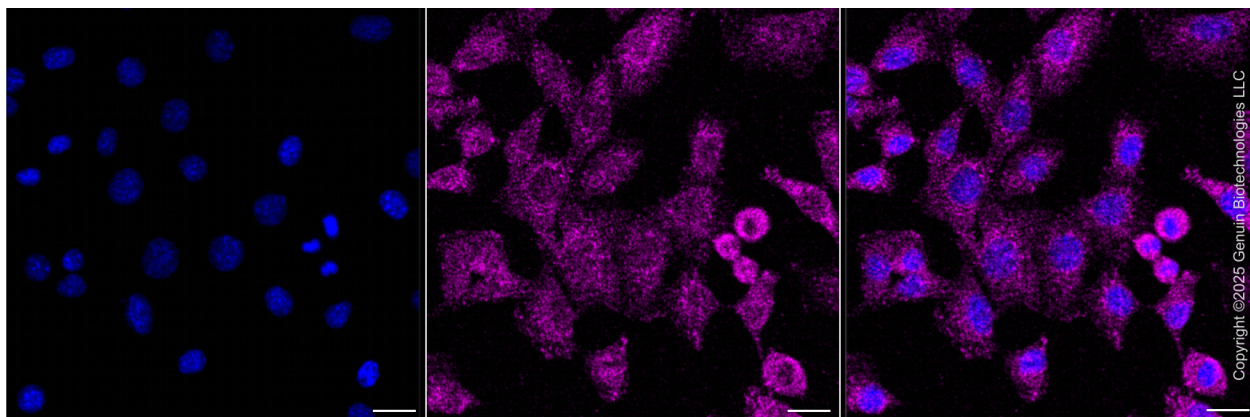
PAGE 2

**Note:** This product is for research use only.

## Validation Data



Flow cytometric analysis of MAP4K4 expression in C2C12 cells using anti-MAP4K4 antibody (Cat#5523, 1:2,000). Green, isotype control; red, MAP4K4.



### SUPPORT

SUPPORT@GENUINBIOTECH.COM  
TEL: +1-540-855-7041

### ORDERS

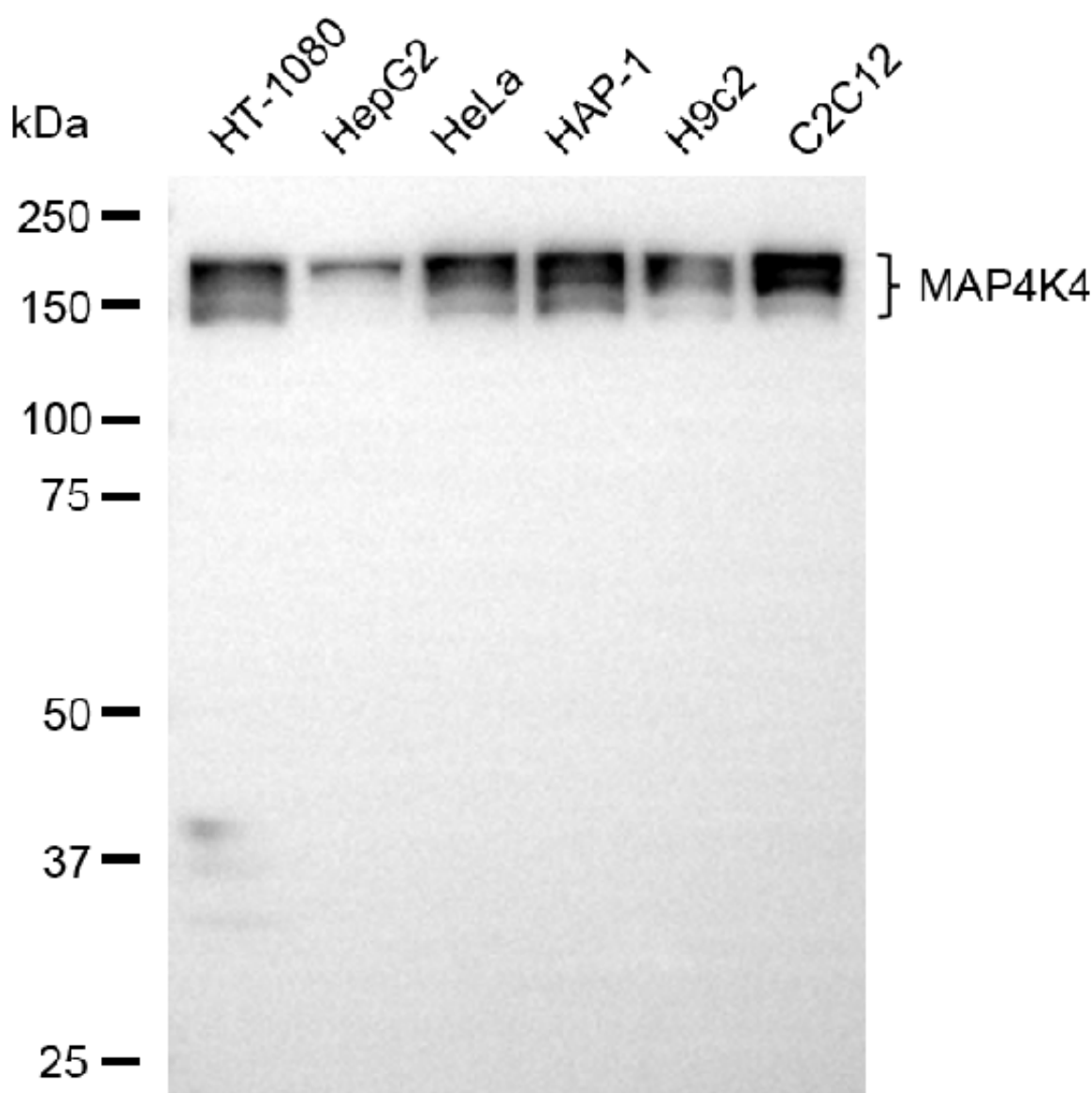
SALES@GENUINBIOTECH.COM  
FAX: +1-540-855-7041

WWW.GENUINBIOTECH.COM

## Anti-MAP4K4 Recombinant Rabbit Monoclonal Antibody

PAGE 3

Immunocytochemical staining of H9C2 cells with anti-MAP4K4 antibody (Cat#5523, 1:1,000). Nuclei were stained blue with DAPI; MAP4K4 was stained magenta with Alexa Fluor® 647. Images were taken using Leica stellaris 5. Protein abundance based on laser Intensity and smart gain: Medium. Scale bar, 20  $\mu$ m.



Copyright ©2025 Genuin Biotechnologies LLC

Western blotting analysis using anti-MAP4K4 antibody (Cat#5523). Total cell lysates (30  $\mu$ g) from various cell lines were loaded and separated by SDS-PAGE. The blot was incubated with anti-MAP4K4 antibody (Cat#5523, 1:5,000) and HRP-conjugated goat anti-rabbit secondary antibody (Cat#201, 1:20,000) respectively. Image was developed using NaQ™ ECL Substrate Kit (Cat#716).

### SUPPORT

SUPPORT@GENUINBIOTECH.COM  
TEL: +1-540-855-7041

### ORDERS

SALES@GENUINBIOTECH.COM  
FAX: +1-540-855-7041

WWW.GENUINBIOTECH.COM