

Anti-HSPB1 Recombinant Rabbit Monoclonal Antibody



Catalog #: 5525

Aliases

HSPB1; Heat Shock Protein Family B (Small) Member 1; HSP27; HSP28; Hs.76067; Hsp25; CMT2F; Heat Shock Protein Family B Member 1; Estrogen-Regulated 24 KDa Protein; Stress-Responsive Protein 27; Heat Shock 27kDa Protein 1; Heat Shock 27kD Protein 1; Heat Shock Protein Beta-1; 28 KDa Heat Shock Protein; Heat Shock 27 KDa Protein; SRP27; Epididymis Secretory Protein Li 102; HEL-S-102; HSP 27; HMN2B; HMND3; HspB1

Background

Gene Name: HSPB1

NCBI Gene Entry: [3315](#)

UniProt Entry: [P04792](#)

Application Information

Molecular Weight: Predicted, 23 kDa; observed, 25 kDa

Clonality: Rabbit monoclonal antibody

Clone ID: 25GB1905

Species Reactivity: Human, mouse, rat

Applications Tested: Western blotting (WB)

Immunogen

A synthesized peptide derived from human Hsp27

Isotype

Rabbit IgG

Storage Buffer

Supplied in PBS (pH 7.4) containing 50% glycerol, and 0.02% sodium azide.

Storage

Store at -20 °C for one year.

Recommended Dilutions

Western Blotting (WB): 1:1,000-1:5,000

Note: This product is for research use only.

SUPPORT

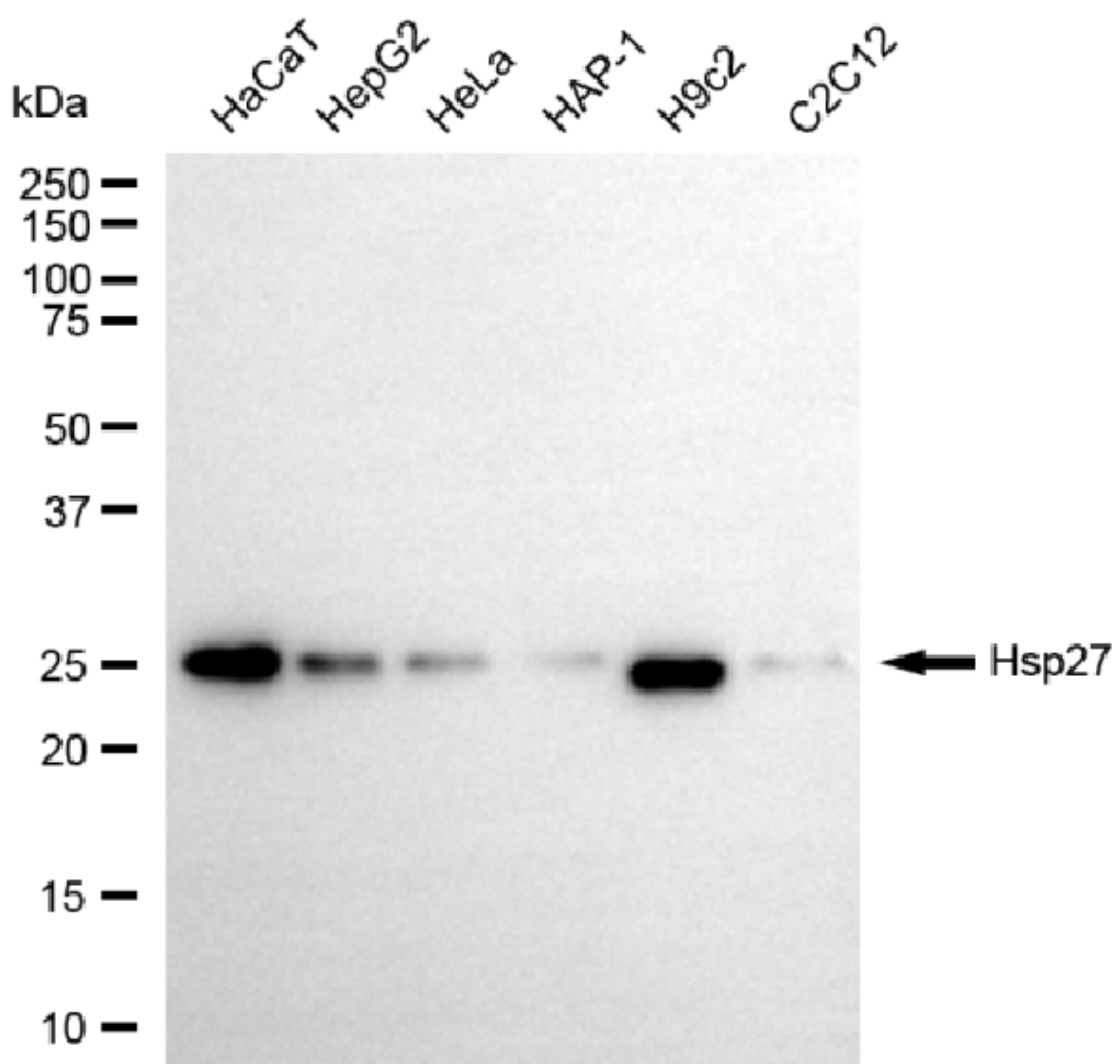
SUPPORT@GENUINBIOTECH.COM
TEL: +1-540-855-7041

ORDERS

SALES@GENUINBIOTECH.COM
FAX: +1-540-855-7041

WWW.GENUINBIOTECH.COM

Validation Data



Copyright ©2025 Genuin Biotechnologies LLC

Western blotting analysis using anti-Hsp27 antibody (Cat#5525). Total cell lysates (30 µg) from various cell lines were loaded and separated by SDS-PAGE. The blot was incubated with anti-Hsp27 antibody (Cat#5525, 1:5,000) and HRP-conjugated goat anti-rabbit secondary antibody (Cat#201, 1:20,000) respectively. Image was developed using FeQ™ ECL Substrate Kit (Cat#226).