

Anti-LCP2 Recombinant Rabbit Monoclonal Antibody



Catalog #: 5526

Aliases

LCP2; Lymphocyte Cytosolic Protein 2; SLP-76; SLP76; SH2 Domain-Containing Leukocyte Protein Of 76 KDa; 76 KDa Tyrosine Phosphoprotein; SLP-76 Tyrosine Phosphoprotein; Lymphocyte Cytosolic Protein 2 (SH2 Domain Containing Leukocyte Protein Of 76kDa); Lymphocyte Cytosolic Protein 2 (SH2 Domain-Containing Leukocyte Protein Of 76kD); SH2 Domain-Containing Leukocyte Protein Of 76kD; IMD81

Background

Gene Name: LCP2

NCBI Gene Entry: [3937](#)

UniProt Entry: [Q13094](#)

Application Information

Molecular Weight: Predicted, 60 kDa; observed, 76 kDa

Clonality: Rabbit monoclonal antibody

Clone ID: 25GB1910

Species Reactivity: Human

Applications Tested: Western blotting (WB), flow cytometry (FCM)

Immunogen

A synthesized peptide derived from human Lymphocyte cytosolic protein 2

Isotype

Rabbit IgG

Storage Buffer

Supplied in PBS (pH 7.4) containing 50% glycerol, and 0.02% sodium azide.

Storage

Store at -20 °C for one year.

Recommended Dilutions

Western Blotting (WB): 1:1,000-1:5,000

Flow Cytometry (FCM): 1:2,000

SUPPORT

SUPPORT@GENUINBIOTECH.COM
TEL: +1-540-855-7041

ORDERS

SALES@GENUINBIOTECH.COM
FAX: +1-540-855-7041

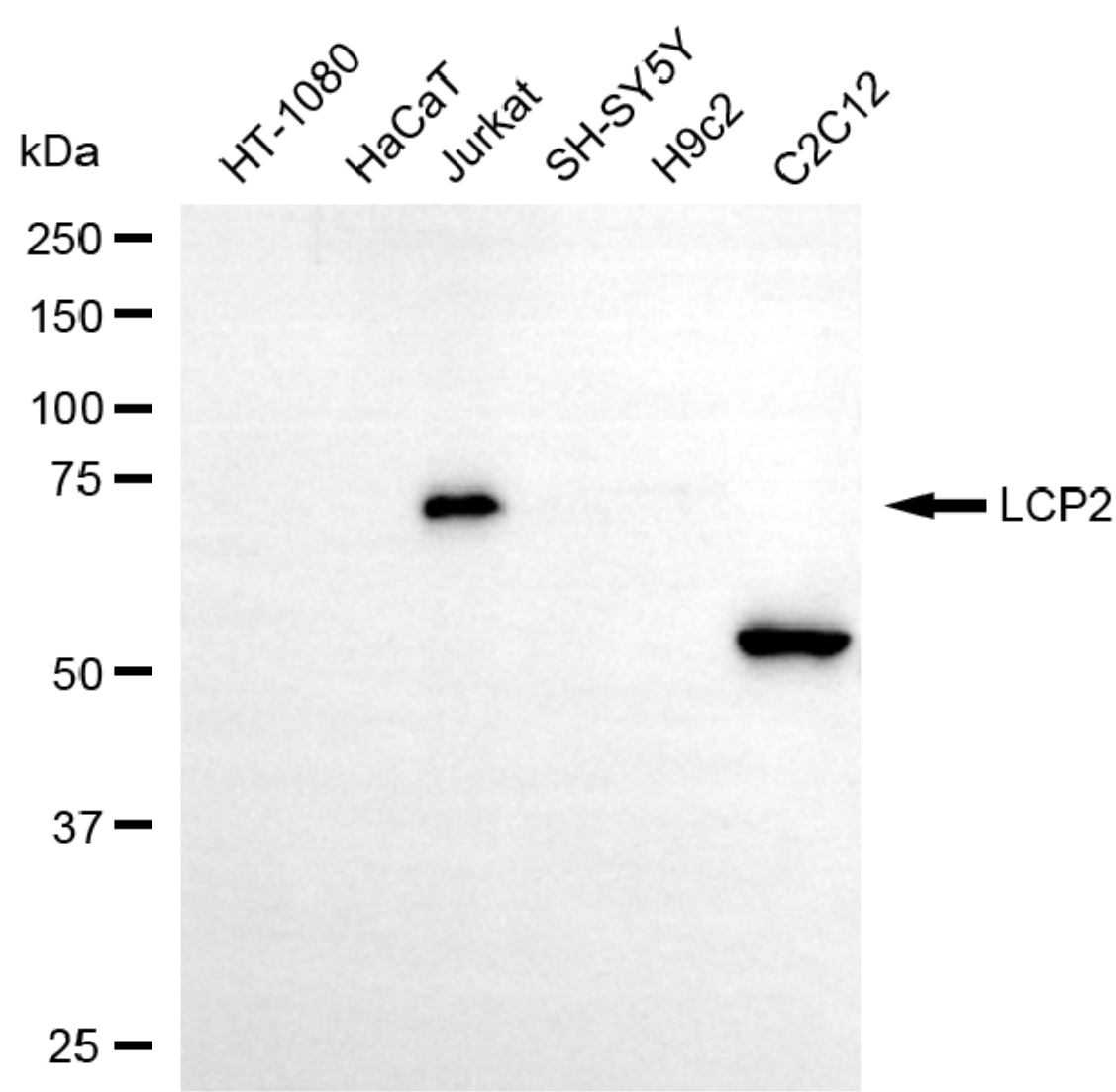
WWW.GENUINBIOTECH.COM

Anti-LCP2 Recombinant Rabbit Monoclonal Antibody

PAGE 2

Note: This product is for research use only.

Validation Data



Copyright ©2025 Genuin Biotechnologies LLC

Western blotting analysis using anti-LCP2 antibody (Cat#5526). Total cell lysates (30 μ g) from various cell lines were loaded and separated by SDS-PAGE. The blot was incubated with anti-LCP2 antibody (Cat#5526, 1:5,000) and HRP-conjugated goat anti-rabbit secondary antibody (Cat#201, 1:20,000) respectively. Image was developed using NaQ™ ECL Substrate Kit (Cat#716).

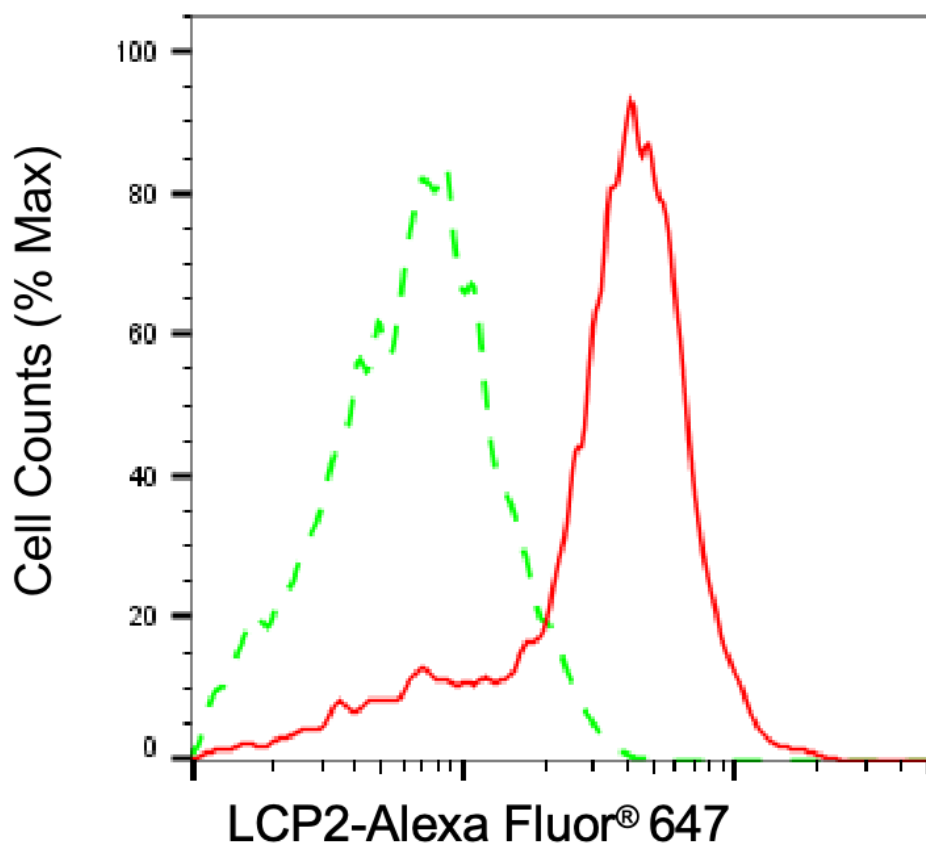
SUPPORT

SUPPORT@GENUINBIOTECH.COM
TEL: +1-540-855-7041

ORDERS

SALES@GENUINBIOTECH.COM
FAX: +1-540-855-7041

WWW.GENUINBIOTECH.COM



Copyright ©2025 Genuin Biotechnologies LLC

Flow cytometric analysis of LCP2 expression in Jurkat cells using anti-LCP2 antibody (Cat#5526, 1:2,000). Green, isotype control; red, LCP2.