

Anti-ITPR1 Recombinant Rabbit Monoclonal Antibody



Catalog #: 5530

Aliases

ITPR1; Inositol 1,4,5-Trisphosphate Receptor Type 1; Insp3r1; PPP1R94; IP3R1; ACV; Inositol 1,4,5-Trisphosphate-Gated Calcium Channel ITPR1; Protein Phosphatase 1, Regulatory Subunit 94; Type 1 Inositol 1,4,5-Trisphosphate Receptor; Inositol 1,4,5 Trisphosphate Receptor; Type 1 InsP3 Receptor; IP3R 1; SCA15; SCA16; SCA29; Inositol 1,4,5-Trisphosphate Receptor, Type 1; Inositol 1,4,5-Triphosphate Receptor, Type 1; Spinocerebellar Ataxia 15; Spinocerebellar Ataxia 16; Spinocerebellar Ataxia 29; IP3 Receptor Isoform 1; IP3 Receptor; INSP3R1; InsP3R1; CLA4; IP3R

Background

Gene Name: ITPR1

NCBI Gene Entry: [3708](#)

UniProt Entry: [Q14643](#)

Application Information

Molecular Weight: Predicted, 314 kDa; observed, 314 kDa

Clonality: Rabbit monoclonal antibody

Clone ID: 25GB1930

Species Reactivity: Human, mouse, rat

Applications Tested: Western blotting (WB), flow cytometry (FCM), immunocytochemistry (IC)

Immunogen

A synthesized peptide derived from human ITPR1

Isotype

Rabbit IgG

Storage Buffer

Supplied in PBS (pH 7.4) containing 50% glycerol, and 0.02% sodium azide.

Storage

Store at -20 °C for one year.

Recommended Dilutions

Western Blotting (WB): 1:1,000-1:5,000

Flow Cytometry (FCM): 1:2,000

SUPPORT

SUPPORT@GENUINBIOTECH.COM
TEL: +1-540-855-7041

ORDERS

SALES@GENUINBIOTECH.COM
FAX: +1-540-855-7041

WWW.GENUINBIOTECH.COM

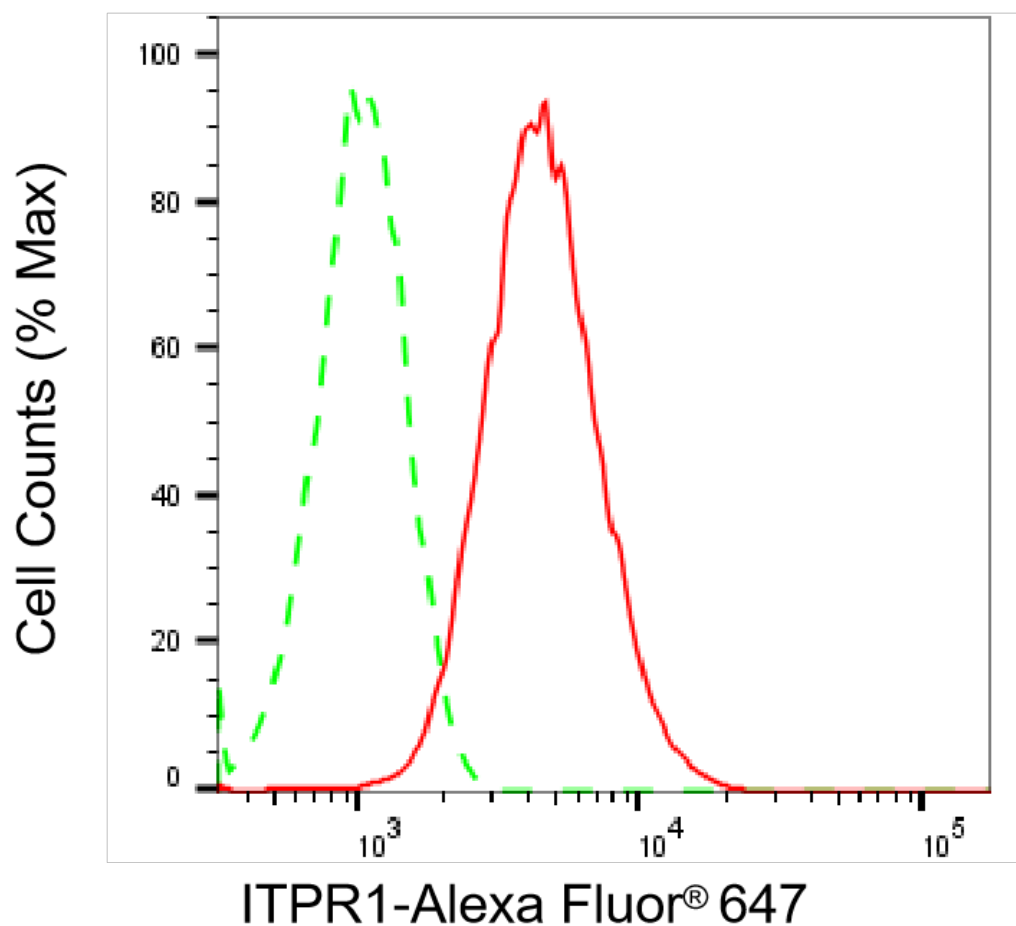
Anti-ITPR1 Recombinant Rabbit Monoclonal Antibody

PAGE 2

Immunocytochemistry (IC): 1:100-1:1,000

Note: This product is for research use only.

Validation Data



Flow cytometric analysis of ITPR1 expression in H9c2 cells using anti-ITPR1 antibody (Cat#5530, 1:2,000). Green, isotype control; red, ITPR1.

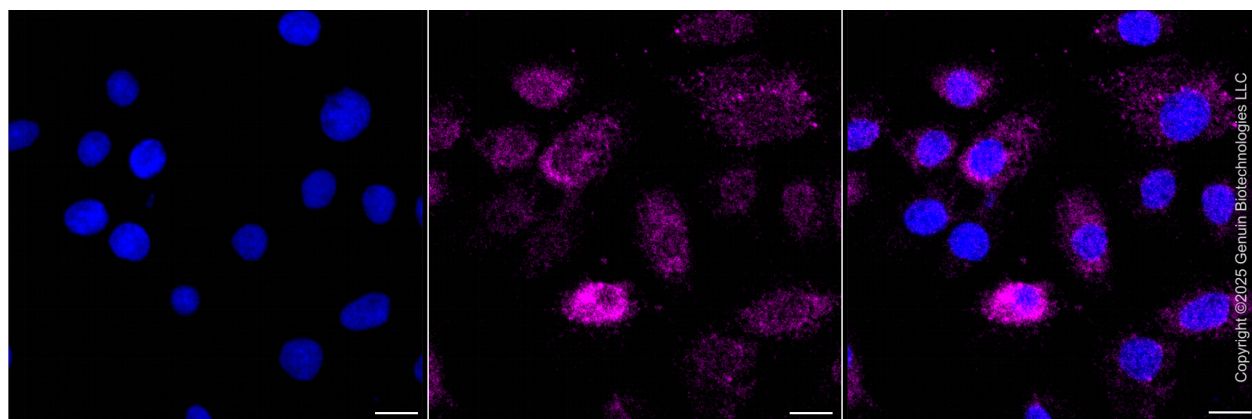
SUPPORT

SUPPORT@GENUINBIOTECH.COM
TEL: +1-540-855-7041

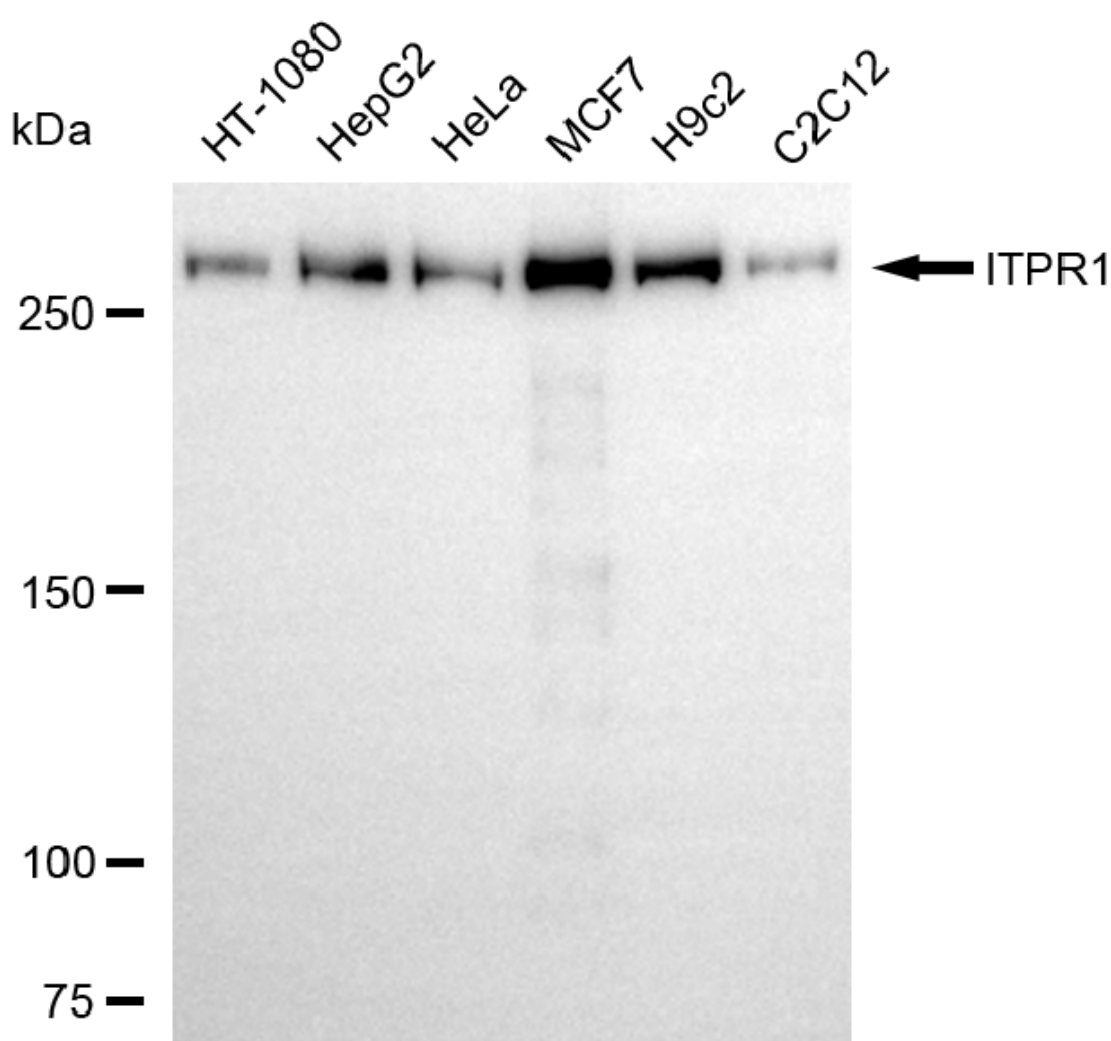
ORDERS

SALES@GENUINBIOTECH.COM
FAX: +1-540-855-7041

WWW.GENUINBIOTECH.COM



Immunocytochemical staining of H9C2 cells with anti-ITPR1 antibody (Cat#5530, 1:1,000) . Nuclei were stained blue with DAPI; ITPR1 was stained magenta with Alexa Fluor® 647. Images were taken using Leica stellaris 5. Protein abundance based on laser Intensity and smart gain: Medium. Scale bar, 20 μ m.



Western blotting analysis using anti-ITPR1 antibody (Cat#5530). Total cell lysates (30 μ g) from

Anti-ITPR1 Recombinant Rabbit Monoclonal Antibody

PAGE 4

various cell lines were loaded and separated by SDS-PAGE. The blot was incubated with anti-ITPR1 antibody (Cat#5530, 1:5,000) and HRP-conjugated goat anti-rabbit secondary antibody (Cat#201, 1:20,000) respectively. Image was developed using NaQ™ ECL Substrate Kit (Cat#716).

SUPPORT

SUPPORT@GENUINBIOTECH.COM
TEL: +1-540-855-7041

ORDERS

SALES@GENUINBIOTECH.COM
FAX: +1-540-855-7041

WWW.GENUINBIOTECH.COM