

# Anti-GBA1 Recombinant Rabbit Monoclonal Antibody



**Catalog #: 5531**

## Aliases

GBA1; Glucosylceramidase Beta 1; GLUC; GBA; D-Glucosyl-N-Acylsphingosine Glucohydrolase; Lysosomal Cholesterol Glycosyltransferase; Lysosomal Acid Glucosylceramidase; Cholesterol Glucosyltransferase; Lysosomal Galactosylceramidase; Cholesteryl-Beta-Glucosidase; Lysosomal Glycosylceramidase; Beta-Glucosylceramidase 1; Glucosidase, Beta, Acid; Beta-Glucocerebrosidase; Acid Beta-Glucosidase; Lysosomal Acid GCase; Glucocerebrosidase; Imiglucerase; Alglucerase; EC 3.2.1.45; Beta-GC; SGTase; Glucosidase, Beta; Acid (Includes Glucosylceramidase); Glucosylceramidase-Like Protein; Lysosomal Glucocerebrosidase; Glucosylceramidase Beta; Glucosylceramidase; EC 3.2.1.46; EC 2.4.1.-; EC 3.2.1.-; GCB; GC

## Background

Gene Name: GBA1

NCBI Gene Entry: [2629](#)

UniProt Entry: [P04062](#)

## Application Information

Molecular Weight: Predicted, 60 kDa; observed, 55-70 kDa

Clonality: Rabbit monoclonal antibody

Clone ID: 25GB1935

Species Reactivity: Human, mouse, rat

Applications Tested: Western blotting (WB)

## Immunogen

A synthesized peptide derived from human Lysosomal acid Gcase

## Isotype

Rabbit IgG

## Storage Buffer

Supplied in PBS (pH 7.4) containing 50% glycerol, and 0.02% sodium azide.

## Storage

Store at -20 °C for one year.

## Recommended Dilutions

---

### SUPPORT

SUPPORT@GENUINBIOTECH.COM  
TEL: +1-540-855-7041

### ORDERS

SALES@GENUINBIOTECH.COM  
FAX: +1-540-855-7041

[WWW.GENUINBIOTECH.COM](http://WWW.GENUINBIOTECH.COM)

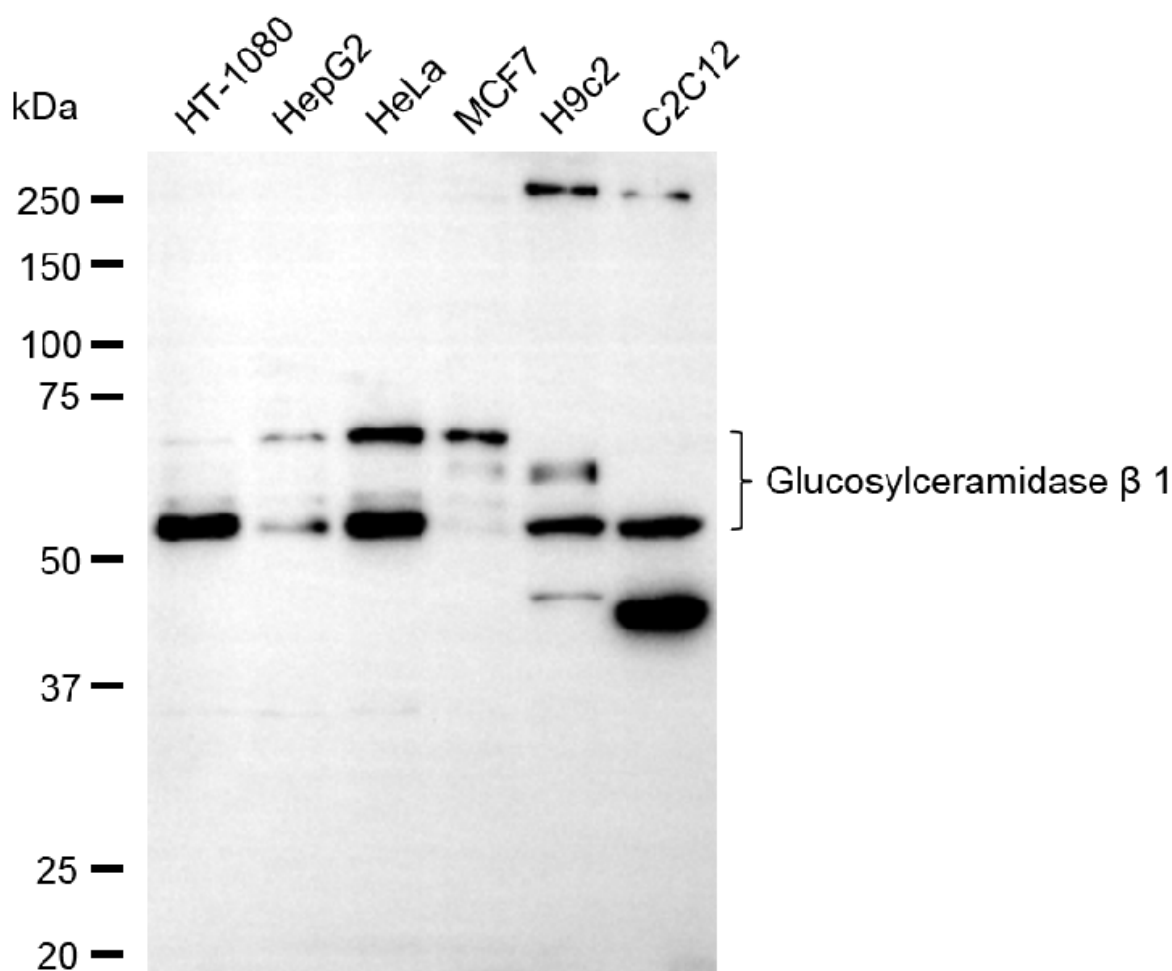
# Anti-GBA1 Recombinant Rabbit Monoclonal Antibody

PAGE 2

Western Blotting (WB): 1:1,000-1:5,000

**Note:** This product is for research use only.

## Validation Data



Western blotting analysis using anti-glucosylceramidase beta 1 antibody (Cat#5531). Total cell lysates (30  $\mu$ g) from various cell lines were loaded and separated by SDS-PAGE. The blot was incubated with anti-glucosylceramidase beta 1 antibody (Cat#5531, 1:5,000) and HRP-conjugated goat anti-rabbit secondary antibody (Cat#201, 1:20,000) respectively. Image was developed using NaQ™ ECL Substrate Kit (Cat#716).

### SUPPORT

SUPPORT@GENUINBIOTECH.COM  
TEL: +1-540-855-7041

### ORDERS

SALES@GENUINBIOTECH.COM  
FAX: +1-540-855-7041

WWW.GENUINBIOTECH.COM