

Anti-HLA-DRA Recombinant Rabbit Monoclonal Antibody



Catalog #: 5539

Aliases

HLA-DRA; Major Histocompatibility Complex, Class II, DR Alpha; HLA-DRA1; HLA Class II Histocompatibility Antigen, DR Alpha Chain; MHC Class II Antigen DRA; Histocompatibility Antigen HLA-DR Alpha

Background

Gene Name: HLA-DRA

NCBI Gene Entry: [3122](#)

UniProt Entry: [P01903](#)

Application Information

Molecular Weight: Predicted, 29 kDa; observed, 35 kDa

Clonality: Rabbit monoclonal antibody

Clone ID: 25GB1975

Species Reactivity: Human

Applications Tested: Western blotting (WB)

Immunogen

A synthesized peptide derived from human HLA DRA

Isotype

Rabbit IgG

Storage Buffer

Supplied in PBS (pH 7.4) containing 50% glycerol, and 0.02% sodium azide.

Storage

Store at -20 °C for one year.

Recommended Dilutions

Western Blotting (WB): 1:1,000-1:5,000

Note: This product is for research use only.

Validation Data

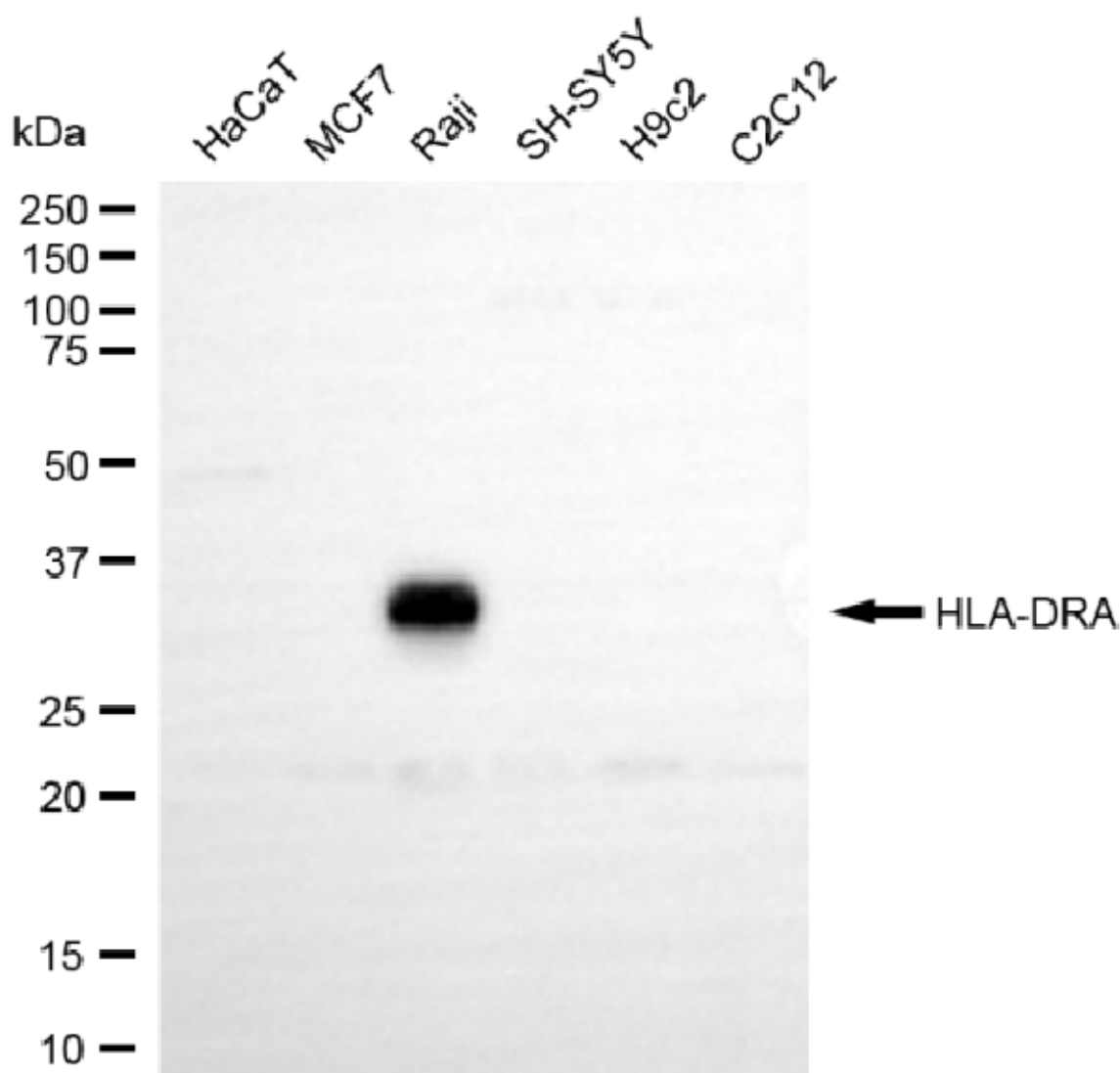
SUPPORT

SUPPORT@GENUINBIOTECH.COM
TEL: +1-540-855-7041

ORDERS

SALES@GENUINBIOTECH.COM
FAX: +1-540-855-7041

WWW.GENUINBIOTECH.COM



Copyright ©2025 Genuin Biotechnologies LLC

Western blotting analysis using anti-HLA-DRA antibody (Cat#5539). Total cell lysates (30 µg) from various cell lines were loaded and separated by SDS-PAGE. The blot was incubated with anti-HLA-DRA antibody (Cat#5539, 1:5,000) and HRP-conjugated goat anti-rabbit secondary antibody (Cat#201, 1:20,000) respectively. Image was developed using NaQ™ ECL Substrate Kit (Cat#716).