

# Anti-UBE2M Recombinant Rabbit Monoclonal Antibody



**Catalog #: 5540**

## Aliases

UBE2M; Ubiquitin Conjugating Enzyme E2 M; BC12; HUbc12; Ubiquitin-Conjugating Enzyme E2M (UBC12 Homolog, Yeast); NEDD8-Conjugating Enzyme Ubc12; NEDD8 Carrier Protein; Ubiquitin-Conjugating Enzyme E2M (Homologous To Yeast UBC12); Epididymis Secretory Sperm Binding Protein; Ubiquitin-Conjugating Enzyme E2 M; Ubiquitin-Conjugating Enzyme E2M; Ubiquitin Conjugating Enzyme E2M; Ubiquitin Carrier Protein M; Ubiquitin-Protein Ligase M; NEDD8 Protein Ligase; Yeast UBC12 Homolog; EC 2.3.2.34; EC 6.3.2; UBC-RS2

## Background

Gene Name: UBE2M

NCBI Gene Entry: [9040](#)

UniProt Entry: [P61081](#)

## Application Information

Molecular Weight: Predicted, 21 kDa; observed, 21 kDa

Clonality: Rabbit monoclonal antibody

Clone ID: 25GB1980

Species Reactivity: Human, mouse, rat

Applications Tested: Western blotting (WB), flow cytometry (FCM), immunocytochemistry (IC)

## Immunogen

A synthesized peptide derived from human UBE2M

## Isotype

Rabbit IgG

## Storage Buffer

Supplied in PBS (pH 7.4) containing 50% glycerol, and 0.02% sodium azide.

## Storage

Store at -20 °C for one year.

## Recommended Dilutions

Western Blotting (WB): 1:1,000-1:5,000

Flow Cytometry (FCM): 1:2,000

Immunocytochemistry (IC): 1:100-1:1,000

---

### SUPPORT

SUPPORT@GENUINBIOTECH.COM  
TEL: +1-540-855-7041

### ORDERS

SALES@GENUINBIOTECH.COM  
FAX: +1-540-855-7041

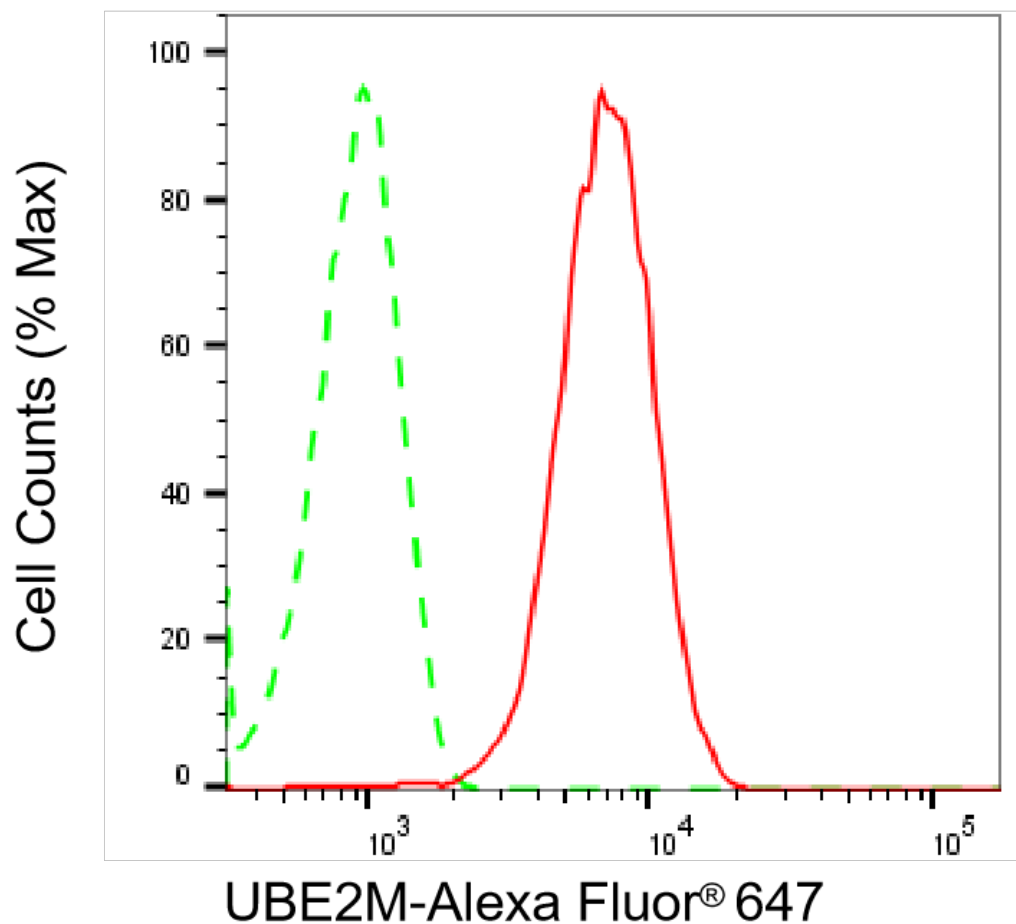
[WWW.GENUINBIOTECH.COM](http://WWW.GENUINBIOTECH.COM)

# Anti-UBE2M Recombinant Rabbit Monoclonal Antibody

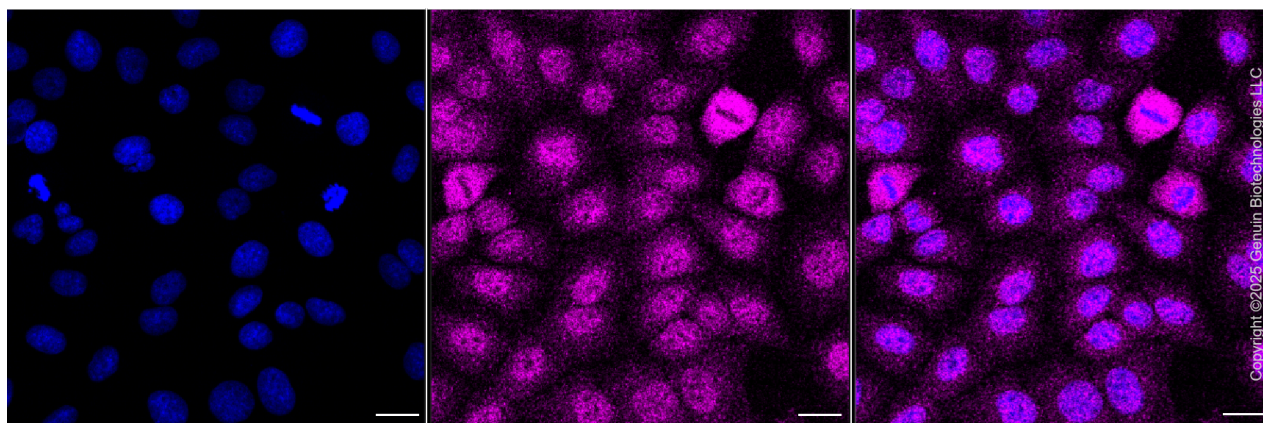
PAGE 2

**Note:** This product is for research use only.

## Validation Data



Flow cytometric analysis of UBE2M expression in HepG2 cells using anti-UBE2M antibody (Cat#5540, 1:2,000). Green, isotype control; red, UBE2M.



### SUPPORT

SUPPORT@GENUINBIOTECH.COM  
TEL: +1-540-855-7041

### ORDERS

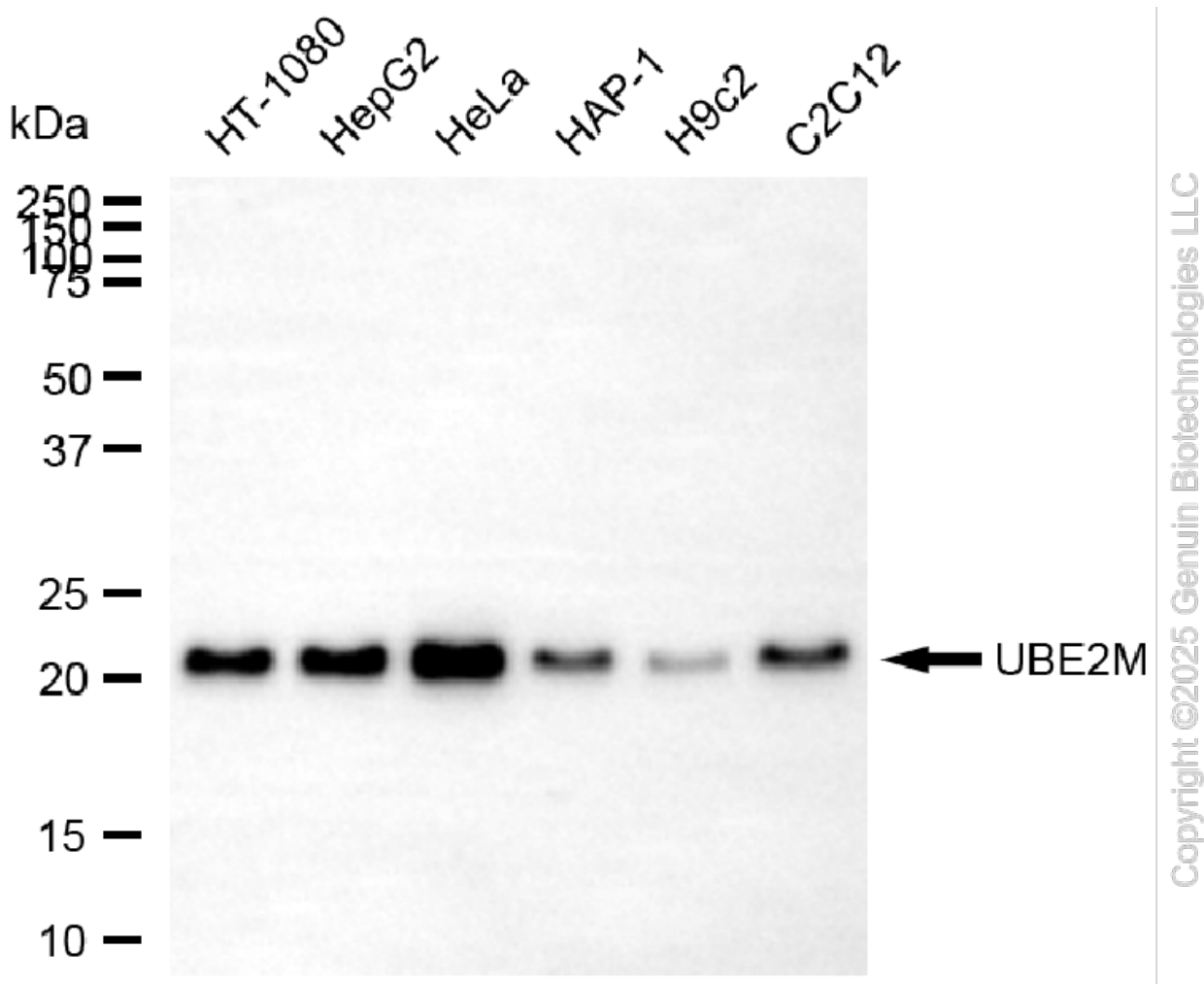
SALES@GENUINBIOTECH.COM  
FAX: +1-540-855-7041

WWW.GENUINBIOTECH.COM

## Anti-UBE2M Recombinant Rabbit Monoclonal Antibody

PAGE 3

Immunocytochemical staining of HepG2 cells with anti-UBE2M antibody (Cat#5540, 1:1,000). Nuclei were stained blue with DAPI; UBE2M was stained magenta with Alexa Fluor® 647. Images were taken using Leica stellaris 5. Protein abundance based on laser Intensity and smart gain: Medium. Scale bar, 20  $\mu$ m.



Western blotting analysis using anti-UBE2M antibody (Cat#5540). Total cell lysates (30  $\mu$ g) from various cell lines were loaded and separated by SDS-PAGE. The blot was incubated with anti-UBE2M antibody (Cat#5540, 1:5,000) and HRP-conjugated goat anti-rabbit secondary antibody (Cat#201, 1:20,000) respectively. Image was developed using NaQ™ ECL Substrate Kit (Cat#716).

### SUPPORT

SUPPORT@GENUINBIOTECH.COM  
TEL: +1-540-855-7041

### ORDERS

SALES@GENUINBIOTECH.COM  
FAX: +1-540-855-7041

WWW.GENUINBIOTECH.COM