

# Anti-DYRK1B Recombinant Rabbit Monoclonal Antibody



**Catalog #: 5541**

## Aliases

DYRK1B; Dual Specificity Tyrosine Phosphorylation Regulated Kinase 1B; MIRK; Minibrain-Related Kinase; Dual Specificity Tyrosine-(Y)-Phosphorylation Regulated Kinase 1B; Dual Specificity Tyrosine-Phosphorylation-Regulated Kinase 1B; Mirk Protein Kinase; Dual-Specificity Tyrosine-(Y)-Phosphorylation Regulated Kinase 1B; EC 2.7.12.1; EC 2.7.12; AOMS3

## Background

Gene Name: DYRK1B

NCBI Gene Entry: [9149](#)

UniProt Entry: [Q9Y463](#)

## Application Information

Molecular Weight: Predicted, 69 kDa; observed, 70 kDa

Clonality: Rabbit monoclonal antibody

Clone ID: 25GB1985

Species Reactivity: Human, mouse, rat

Applications Tested: Western blotting (WB), flow cytometry (FCM)

## Immunogen

A synthesized peptide derived from human DYRK1B

## Isotype

Rabbit IgG

## Storage Buffer

Supplied in PBS (pH 7.4) containing 50% glycerol, and 0.02% sodium azide.

## Storage

Store at -20 °C for one year.

## Recommended Dilutions

Western Blotting (WB): 1:1,000-1:5,000

Flow Cytometry (FCM): 1:2,000

**Note:** This product is for research use only.

---

### SUPPORT

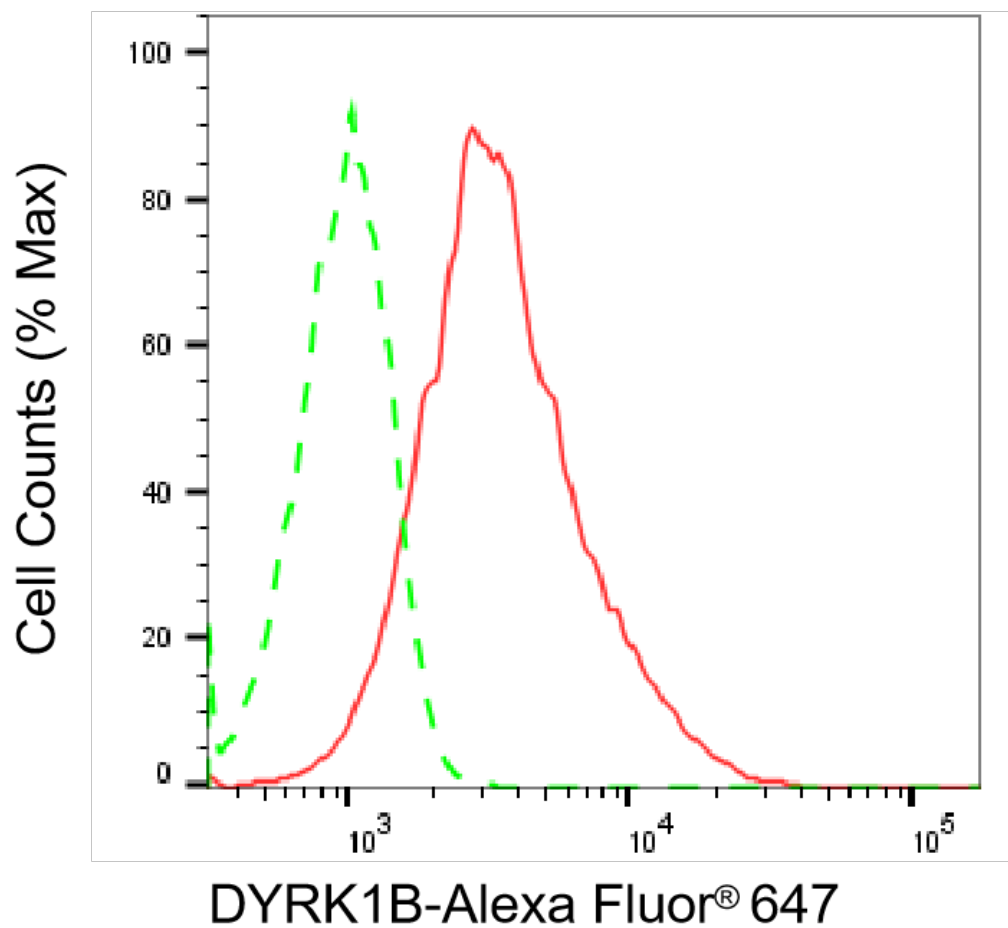
SUPPORT@GENUINBIOTECH.COM  
TEL: +1-540-855-7041

### ORDERS

SALES@GENUINBIOTECH.COM  
FAX: +1-540-855-7041

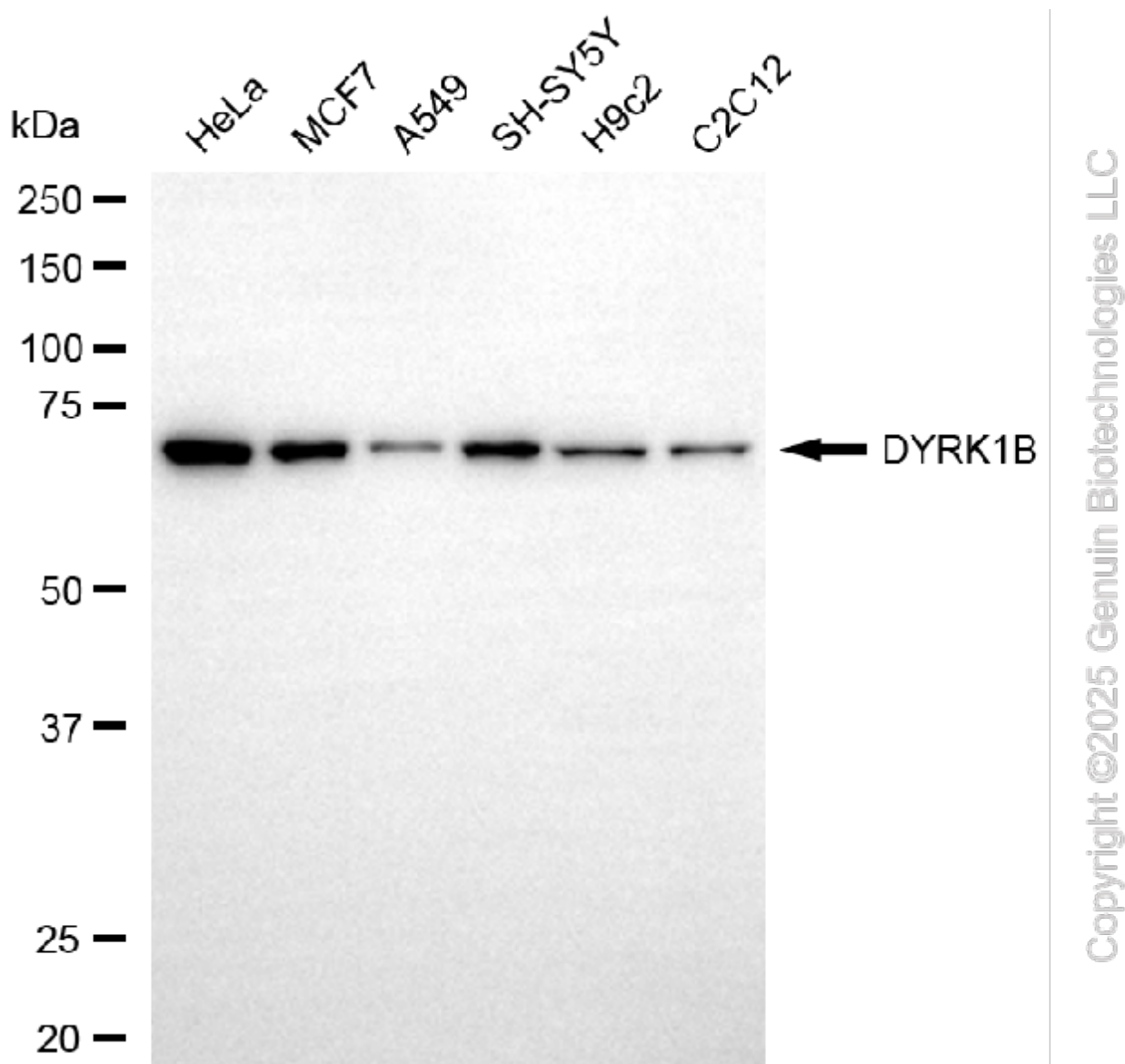
[WWW.GENUINBIOTECH.COM](http://WWW.GENUINBIOTECH.COM)

**Validation Data**



Copyright ©2025 Genuin Biotechnologies LLC

Flow cytometric analysis of DYRK1B expression in HeLa cells using anti-DYRK1B antibody (Cat#5541, 1:2,000). Green, isotype control; red, DYRK1B.



Western blotting analysis using anti-DYRK1B antibody (Cat#5541). Total cell lysates (30 µg) from various cell lines were loaded and separated by SDS-PAGE. The blot was incubated with anti-DYRK1B antibody (Cat#5541, 1:5,000) and HRP-conjugated goat anti-rabbit secondary antibody (Cat#201, 1:20,000) respectively. Image was developed using FeQ™ ECL Substrate Kit (Cat#226).