

Anti-CARD11 Recombinant Rabbit Monoclonal Antibody



Catalog #: 5542

Aliases

CARD11; Caspase Recruitment Domain Family Member 11; CARMA1; BIMP3; Caspase Recruitment Domain-Containing Protein 11; Bcl10-Interacting Maguk Protein 3; CARD-Containing MAGUK Protein 1; Carma 1; Caspase Recruitment Domain Family, Member 11; Card-Maguk Protein 1; IMD11A; BENTA; IMD11; PPBL

Background

Gene Name: CARD11

NCBI Gene Entry: [84433](#)

UniProt Entry: [Q9BXL7](#)

Application Information

Molecular Weight: Predicted, 133 kDa; observed, 150 kDa

Clonality: Rabbit monoclonal antibody

Clone ID: 25GB1990

Species Reactivity: Human

Applications Tested: Western blotting (WB)

Immunogen

A synthesized peptide derived from human CARD11

Isotype

Rabbit IgG

Storage Buffer

Supplied in PBS (pH 7.4) containing 50% glycerol, and 0.02% sodium azide.

Storage

Store at -20 °C for one year.

Recommended Dilutions

Western Blotting (WB): 1:1,000-1:5,000

Note: This product is for research use only.

Validation Data

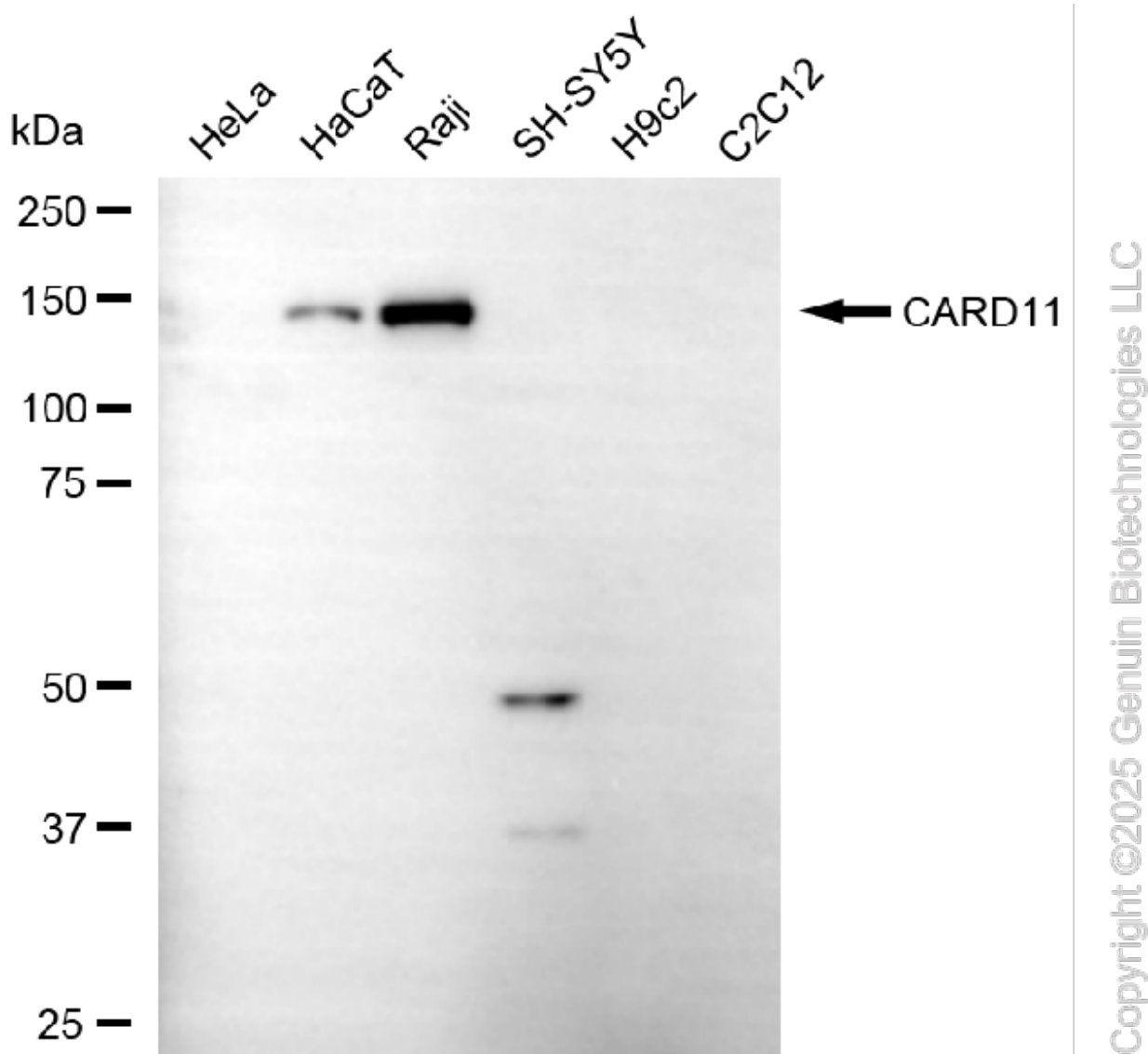
SUPPORT

SUPPORT@GENUINBIOTECH.COM
TEL: +1-540-855-7041

ORDERS

SALES@GENUINBIOTECH.COM
FAX: +1-540-855-7041

WWW.GENUINBIOTECH.COM



Western blotting analysis using anti-CARD11 antibody (Cat#5542). Total cell lysates (30 μ g) from various cell lines were loaded and separated by SDS-PAGE. The blot was incubated with anti-CARD11 antibody (Cat#5542, 1:5,000) and HRP-conjugated goat anti-rabbit secondary antibody (Cat#201, 1:20,000) respectively. Image was developed using FeQ™ ECL Substrate Kit (Cat#226).