

Anti-GDF1 Recombinant Rabbit Monoclonal Antibody



Catalog #: 5544

Aliases

GDF1; Growth Differentiation Factor 1; Embryonic Growth/Differentiation Factor 1; Longevity Assurance Gene 1 Protein Homolog 1; LAG1 Longevity Assurance Homolog 1; Ceramide Synthase 1; Protein UOG-1; CERS1; CHTD6; DTGA3; LASS1; GDF-1; DORV; LAG1; UOG1; RAI

Background

Gene Name: GDF1

NCBI Gene Entry: [2657](#)

UniProt Entry: [P27539](#)

Application Information

Molecular Weight: Predicted, 39 kDa; observed, 36 kDa

Clonality: Rabbit monoclonal antibody

Clone ID: 25GB2000

Species Reactivity: Human, mouse, rat

Applications Tested: Western blotting (WB)

Immunogen

A synthesized peptide derived from human GDF 1

Isotype

Rabbit IgG

Storage Buffer

Supplied in PBS (pH 7.4) containing 50% glycerol, and 0.02% sodium azide.

Storage

Store at -20 °C for one year.

Recommended Dilutions

Western Blotting (WB): 1:1,000-1:5,000

Note: This product is for research use only.

Validation Data

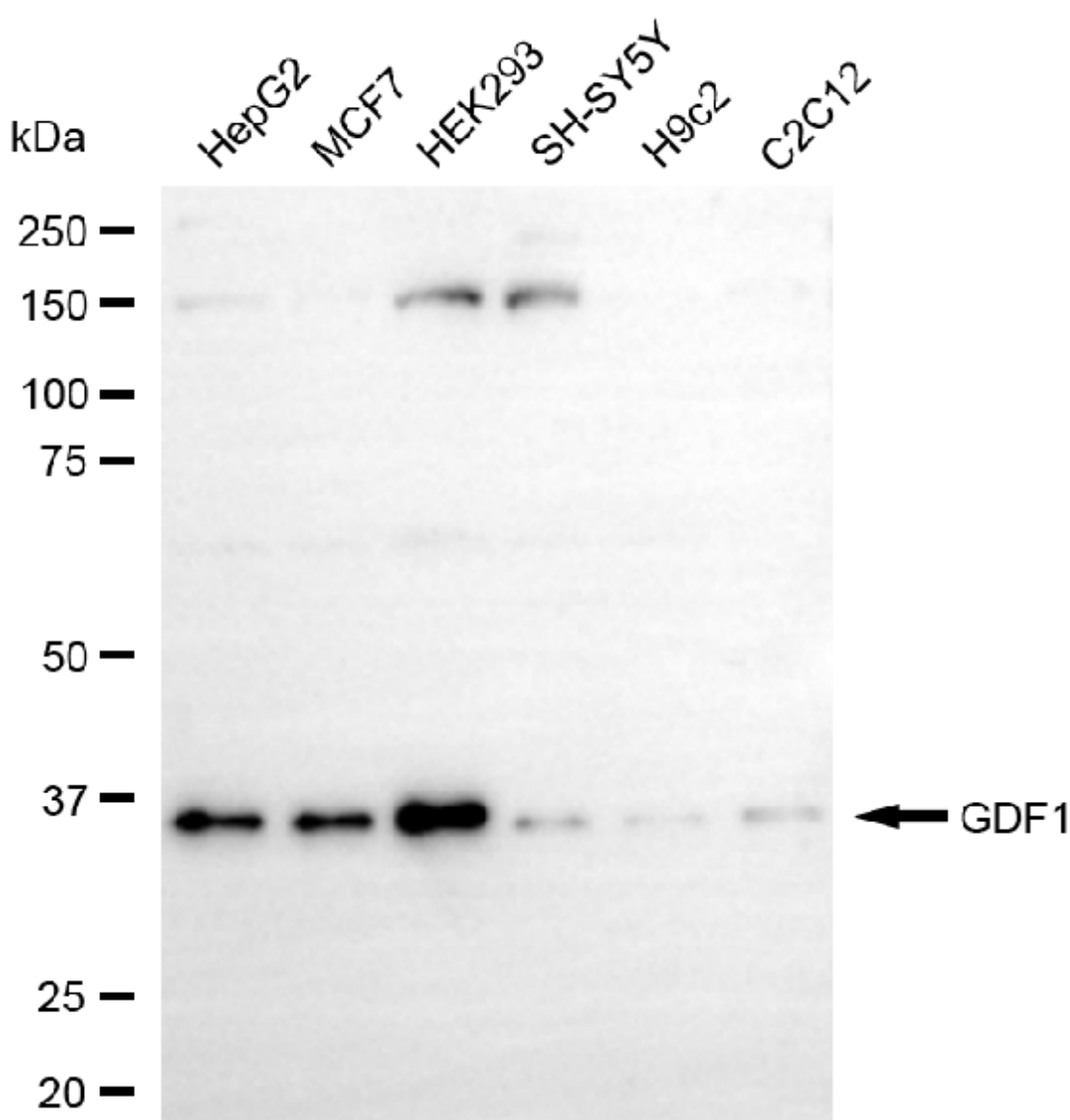
SUPPORT

SUPPORT@GENUINBIOTECH.COM
TEL: +1-540-855-7041

ORDERS

SALES@GENUINBIOTECH.COM
FAX: +1-540-855-7041

WWW.GENUINBIOTECH.COM



Copyright ©2025 Genuin Biotechnologies LLC

Western blotting analysis using anti-GDF1 antibody (Cat#5544). Total cell lysates (30 µg) from various cell lines were loaded and separated by SDS-PAGE. The blot was incubated with anti-GDF1 antibody (Cat#5544, 1:5,000) and HRP-conjugated goat anti-rabbit secondary antibody (Cat#201, 1:20,000) respectively. Image was developed using FeQ™ ECL Substrate Kit (Cat#226)