

# Anti-MCRS1 Recombinant Rabbit Monoclonal Antibody



**Catalog #: 5545**

## Aliases

MCRS1; Microspherule Protein 1; INO80Q; MSP58; MCRS2; ICP22BP; P78; Cell Cycle-Regulated Factor P78; 58 KDa Microspherule Protein; INO80 Complex Subunit Q; INO80 Complex Subunit J; Cell Cycle-Regulated Factor (78 KDa)

## Background

Gene Name: MCRS1

NCBI Gene Entry: [10445](#)

UniProt Entry: [Q96EZ8](#)

## Application Information

Molecular Weight: Predicted, 52 kDa; observed, 50 kDa

Clonality: Rabbit monoclonal antibody

Clone ID: 25GB2005

Species Reactivity: Human, mouse, rat

Applications Tested: Western blotting (WB), flow cytometry (FCM), immunocytochemistry (IC)

## Immunogen

A synthesized peptide derived from human MCRS1

## Isotype

Rabbit IgG

## Storage Buffer

Supplied in PBS (pH 7.4) containing 50% glycerol, and 0.02% sodium azide.

## Storage

Store at -20 °C for one year.

## Recommended Dilutions

Western Blotting (WB): 1:1,000-1:5,000

Flow Cytometry (FCM): 1:2,000

Immunocytochemistry (IC): 1:100-1:1,000

**Note:** This product is for research use only.

---

### SUPPORT

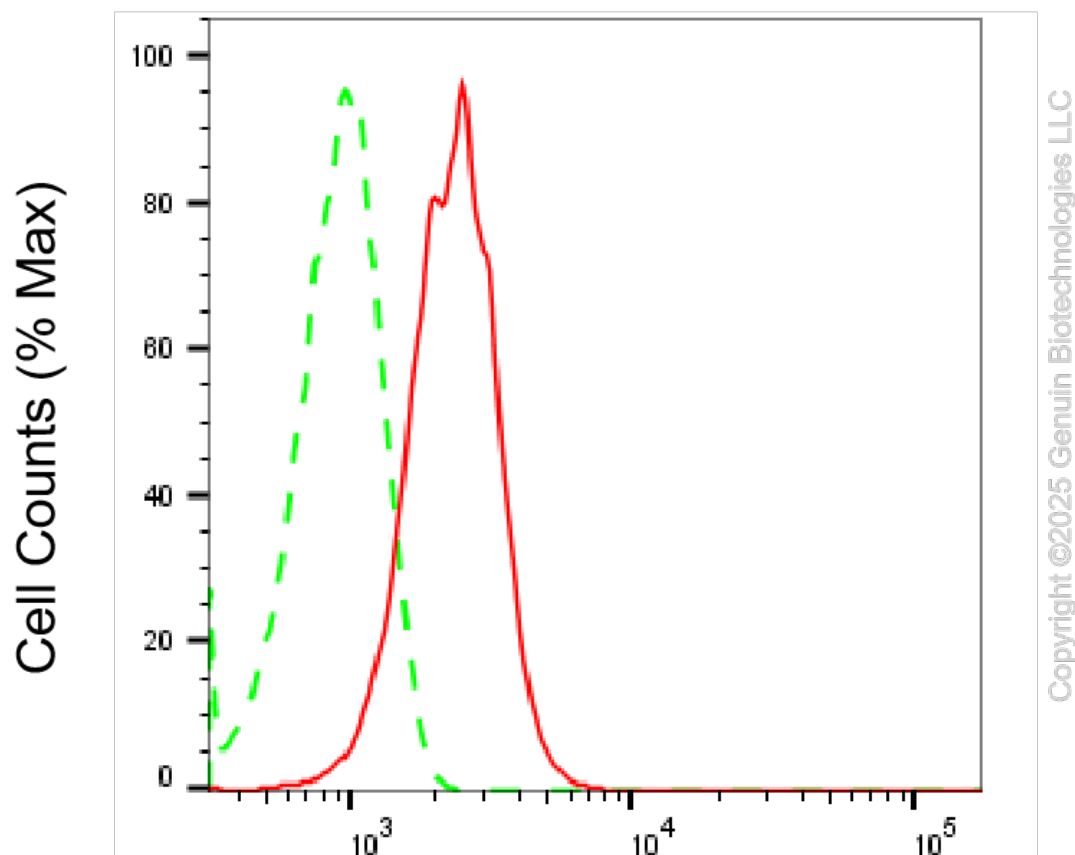
SUPPORT@GENUINBIOTECH.COM  
TEL: +1-540-855-7041

### ORDERS

SALES@GENUINBIOTECH.COM  
FAX: +1-540-855-7041

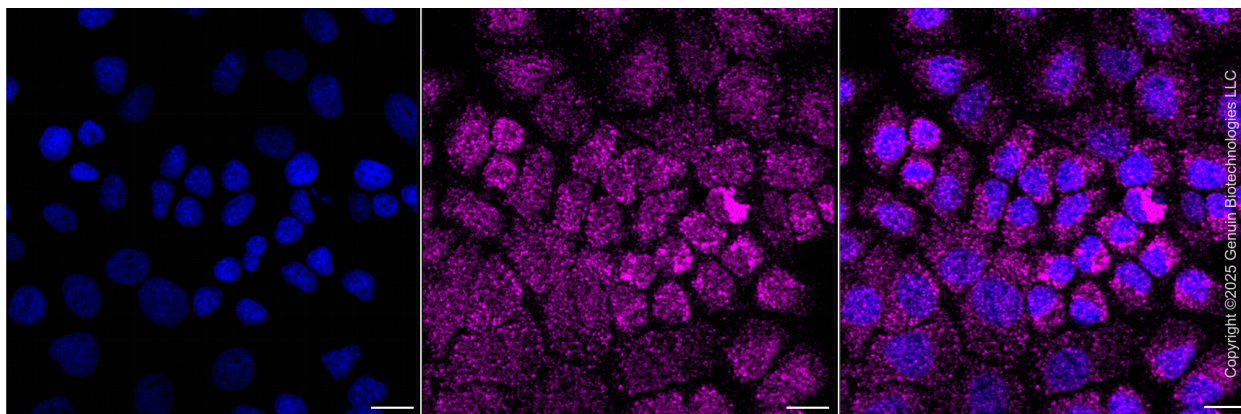
[WWW.GENUINBIOTECH.COM](http://WWW.GENUINBIOTECH.COM)

**Validation Data**



**Microspherule protein 1-Alexa Fluor® 647**

Flow cytometric analysis of Microspherule protein 1 expression in HepG2 cells using anti-Microspherule protein 1 antibody (Cat#5545, 1:2,000). Green, isotype control; red, Microspherule protein 1.



Immunocytochemical staining of HepG2 cells with anti-Microspherule protein 1 antibody

**SUPPORT**

SUPPORT@GENUINBIOTECH.COM  
TEL: +1-540-855-7041

**ORDERS**

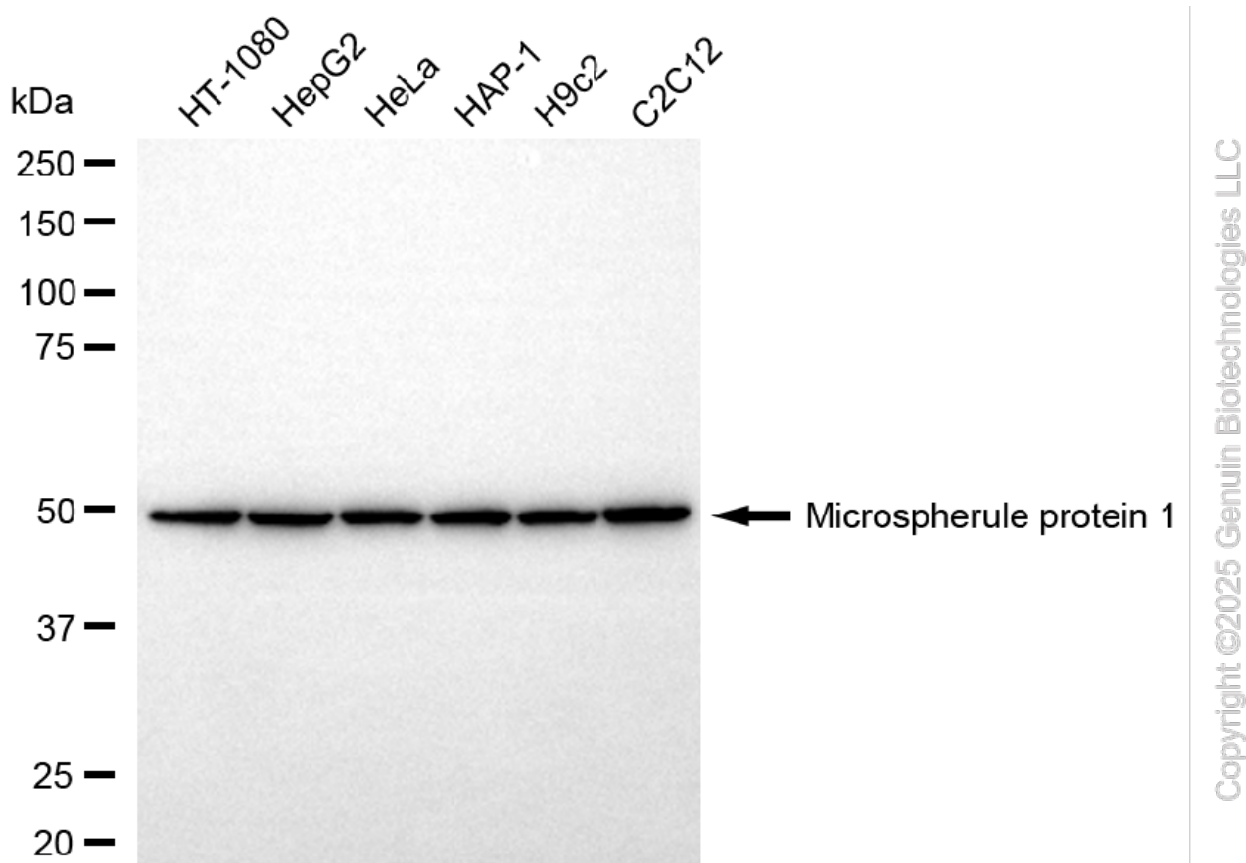
SALES@GENUINBIOTECH.COM  
FAX: +1-540-855-7041

[WWW.GENUINBIOTECH.COM](http://WWW.GENUINBIOTECH.COM)

## Anti-MCRS1 Recombinant Rabbit Monoclonal Antibody

PAGE 3

(Cat#5545, 1:1,000) . Nuclei were stained blue with DAPI; Microspherule protein 1 was stained magenta with Alexa Fluor® 647. Images were taken using Leica stellaris 5. Protein abundance based on laser Intensity and smart gain: Low. Scale bar, 20  $\mu$ m.



Western blotting analysis using anti-microspherule protein 1 antibody (Cat#5545). Total cell lysates (30  $\mu$ g) from various cell lines were loaded and separated by SDS-PAGE. The blot was incubated with anti-microspherule protein 1 antibody (Cat#5545, 1:5,000) and HRP-conjugated goat anti-rabbit secondary antibody (Cat#201, 1:20,000) respectively. Image was developed using NaQ™ ECL Substrate Kit (Cat#716).

### SUPPORT

SUPPORT@GENUINBIOTECH.COM  
TEL: +1-540-855-7041

### ORDERS

SALES@GENUINBIOTECH.COM  
FAX: +1-540-855-7041

WWW.GENUINBIOTECH.COM