

Anti-Profilin 1 Recombinant Rabbit Monoclonal Antibody



Catalog #: 5546

Aliases

PFN1; Profilin 1; Epididymis Tissue Protein Li 184a; Profilin-1; Profilin I; ALS18

Background

Gene Name: PFN1

NCBI Gene Entry: [5216](#)

UniProt Entry: [P07737](#)

Application Information

Molecular Weight: Predicted, 15 kDa; observed, 15 kDa

Clonality: Rabbit monoclonal antibody

Clone ID: 25GB2010

Species Reactivity: Human, mouse, rat

Applications Tested: Western blotting (WB), flow cytometry (FCM)

Immunogen

A synthesized peptide derived from human Profilin 1

Isotype

Rabbit IgG

Storage Buffer

Supplied in PBS (pH 7.4) containing 50% glycerol, and 0.02% sodium azide.

Storage

Store at -20 °C for one year.

Recommended Dilutions

Western Blotting (WB): 1:1,000-1:5,000

Flow Cytometry (FCM): 1:2,000

Note: This product is for research use only.

Validation Data

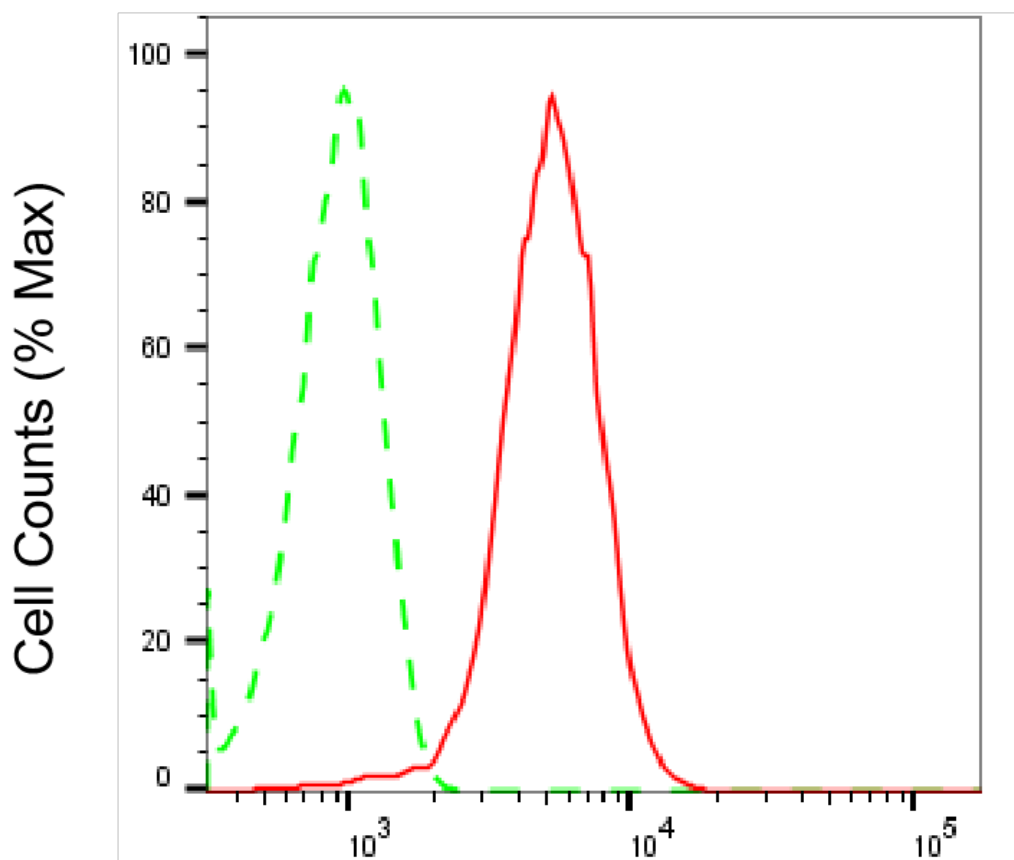
SUPPORT

SUPPORT@GENUINBIOTECH.COM
TEL: +1-540-855-7041

ORDERS

SALES@GENUINBIOTECH.COM
FAX: +1-540-855-7041

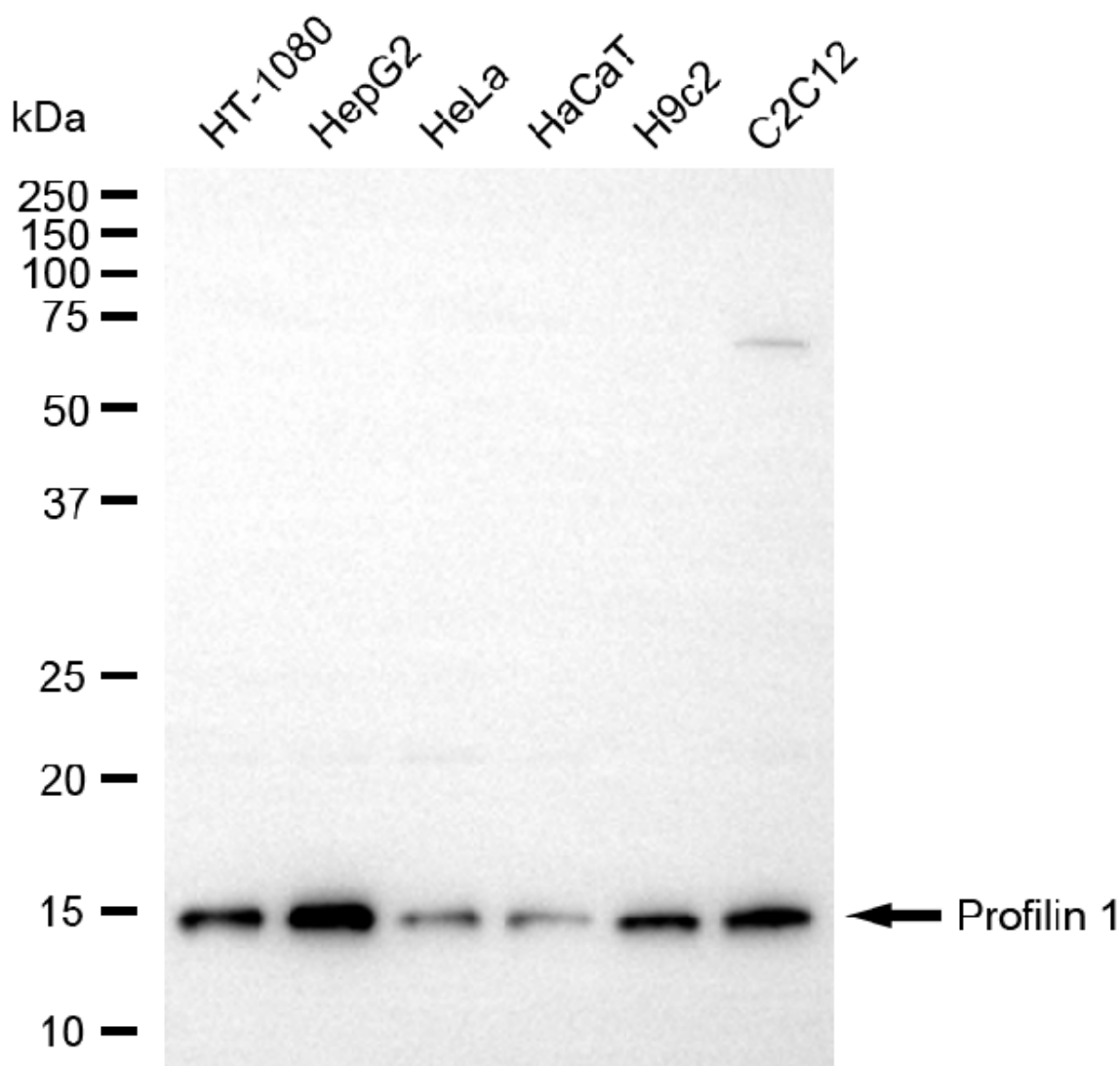
WWW.GENUINBIOTECH.COM



Copyright ©2025 Genuin Biotechnologies LLC

Profilin 1-Alexa Fluor® 647

Flow cytometric analysis of Profilin 1 expression in HepG2 cells using anti-Profilin 1 antibody (Cat#5546, 1:2,000). Green, isotype control; red, Profilin 1.



Copyright ©2025 Genuin Biotechnologies LLC

Western blotting analysis using anti-profilin 1 antibody (Cat#5546). Total cell lysates (10 µg) from various cell lines were loaded and separated by SDS-PAGE. The blot was incubated with anti-profilin 1 antibody (Cat#5546, 1:5,000) and HRP-conjugated goat anti-rabbit secondary antibody (Cat#201, 1:20,000) respectively. Image was developed using NaQ™ ECL Substrate Kit (Cat#716).