

# Anti-HTR2C Recombinant Rabbit Monoclonal Antibody



**Catalog #: 5549**

## Aliases

HTR2C; 5-Hydroxytryptamine Receptor 2C; 5-HT2C; 5HTR2C; HTR1C; 5-Hydroxytryptamine (Serotonin) Receptor 2C, G Protein-Coupled; 5-Hydroxytryptamine Receptor 1C; 5-HTR2C; 5-HT1C; 5-Hydroxytryptamine (Serotonin) Receptor 2C; Serotonin 5-HT-1C Receptor; Serotonin 5-HT-2C Receptor; Serotonin Receptor 2C; 5-HT-2C; 5-HT-1C

## Background

Gene Name: HTR2C

NCBI Gene Entry: [3358](#)

UniProt Entry: [P28335](#)

## Application Information

Molecular Weight: Predicted, 52 kDa; observed, 65 kDa

Clonality: Rabbit monoclonal antibody

Clone ID: 25GB2025

Species Reactivity: Human

Applications Tested: Western blotting (WB), flow cytometry (FCM), immunocytochemistry (IC)

## Immunogen

A synthesized peptide derived from human 5 HT2C

## Isotype

Rabbit IgG

## Storage Buffer

Supplied in PBS (pH 7.4) containing 50% glycerol, and 0.02% sodium azide.

## Storage

Store at -20 °C for one year.

## Recommended Dilutions

Western Blotting (WB): 1:1,000-1:5,000

Flow Cytometry (FCM): 1:2,000

Immunocytochemistry (IC): 1:100-1:1,000

---

### SUPPORT

SUPPORT@GENUINBIOTECH.COM  
TEL: +1-540-855-7041

### ORDERS

SALES@GENUINBIOTECH.COM  
FAX: +1-540-855-7041

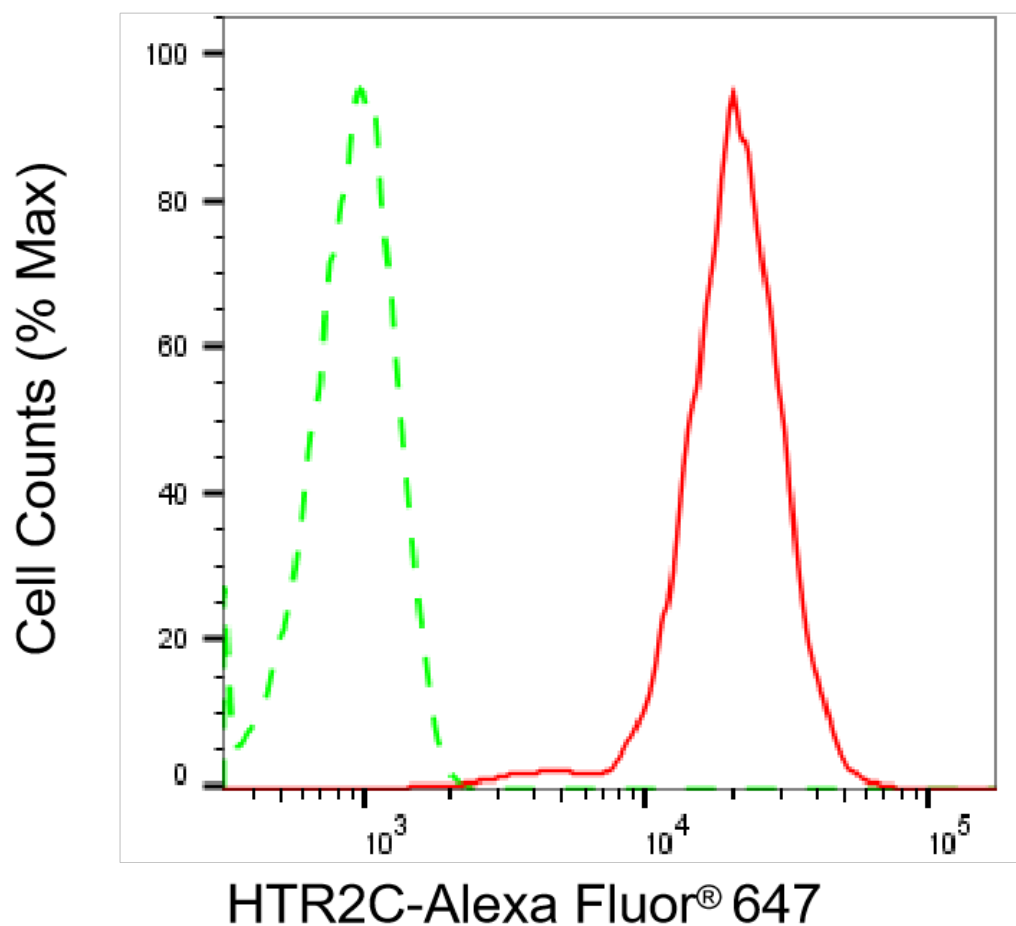
[WWW.GENUINBIOTECH.COM](http://WWW.GENUINBIOTECH.COM)

# Anti-HTR2C Recombinant Rabbit Monoclonal Antibody

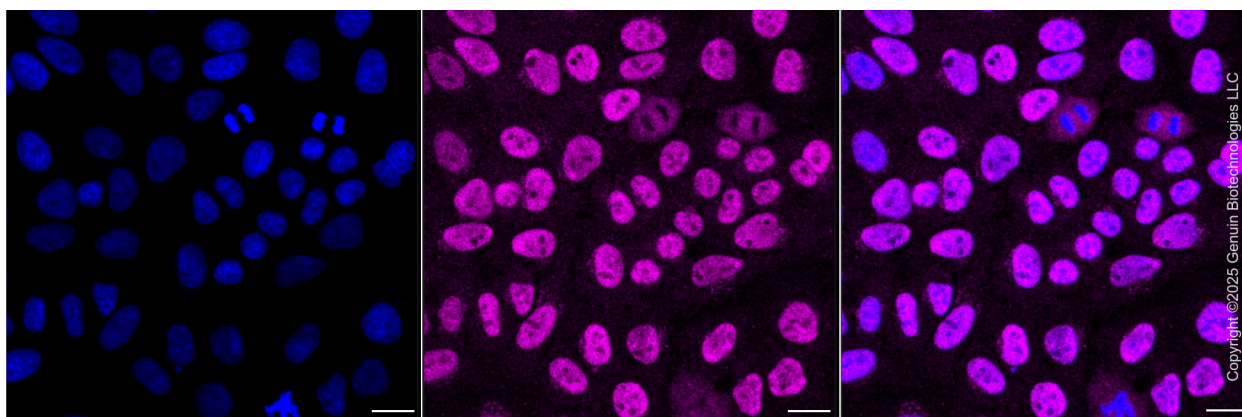
PAGE 2

**Note:** This product is for research use only.

## Validation Data



Flow cytometric analysis of HTR2C expression in HepG2 cells using anti-HTR2C antibody (Cat#5549, 1:2,000). Green, isotype control; red, HTR2C.



### SUPPORT

SUPPORT@GENUINBIOTECH.COM  
TEL: +1-540-855-7041

### ORDERS

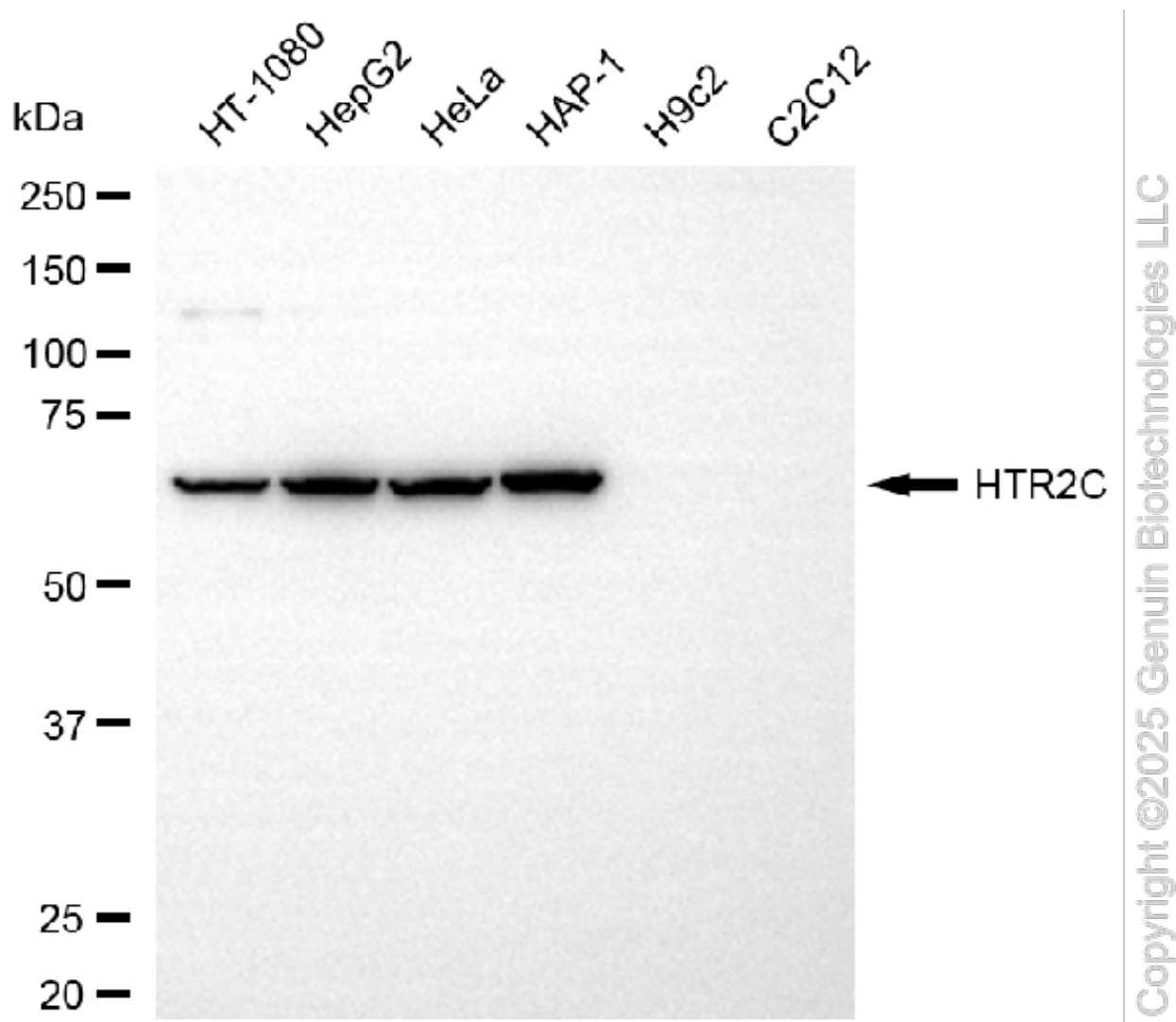
SALES@GENUINBIOTECH.COM  
FAX: +1-540-855-7041

WWW.GENUINBIOTECH.COM

## Anti-HTR2C Recombinant Rabbit Monoclonal Antibody

PAGE 3

Immunocytochemical staining of HepG2 cells with anti-HTR2C antibody (Cat#5549, 1:1,000) . Nuclei were stained blue with DAPI; HTR2C was stained magenta with Alexa Fluor® 647. Images were taken using Leica stellaris 5. Protein abundance based on laser Intensity and smart gain: Medium. Scale bar, 20  $\mu$ m.



Western blotting analysis using anti-HTR2C antibody (Cat#5549). Total cell lysates (30  $\mu$ g) from various cell lines were loaded and separated by SDS-PAGE. The blot was incubated with anti-HTR2C antibody (Cat#5549, 1:5,000) and HRP-conjugated goat anti-rabbit secondary antibody (Cat#201, 1:20,000) respectively. Image was developed using NaQ™ ECL Substrate Kit (Cat#716).

### SUPPORT

SUPPORT@GENUINBIOTECH.COM  
TEL: +1-540-855-7041

### ORDERS

SALES@GENUINBIOTECH.COM  
FAX: +1-540-855-7041

WWW.GENUINBIOTECH.COM