

Catalog #: 5557

Aliases

MAGEC2; MAGE Family Member C2; HCA587; CT10; Cancer/Testis Antigen 10; MAGEE1; Melanoma Antigen, Family E, 1, Cancer/Testis Specific; Hepatocellular Carcinoma-Associated Antigen 587; Melanoma-Associated Antigen C2; Melanoma Antigen Family C2; MAGE-C2 Antigen; MAGE-E1 Antigen; MAGE-C2; Hepatocellular Cancer Antigen 587; Melanoma Antigen Family C, 2

Background

Gene Name: MAGEC2

NCBI Gene Entry: [51438](#)

UniProt Entry: [Q9UBF1](#)

Application Information

Molecular Weight: Predicted, 41 kDa; observed, 55 kDa

Clonality: Rabbit monoclonal antibody

Clone ID: 25GB4245

Species Reactivity: Human

Applications Tested: Western blotting (WB)

Immunogen

Recombinant protein of human MAGEC2

Isotype

Rabbit IgG

Storage Buffer

Supplied in PBS (pH 7.4) containing 50% glycerol, and 0.02% sodium azide.

Storage

Store at -20 °C for one year.

Recommended Dilutions

Western Blotting (WB): 1:1,000-1:5,000

Note: This product is for research use only.

SUPPORT

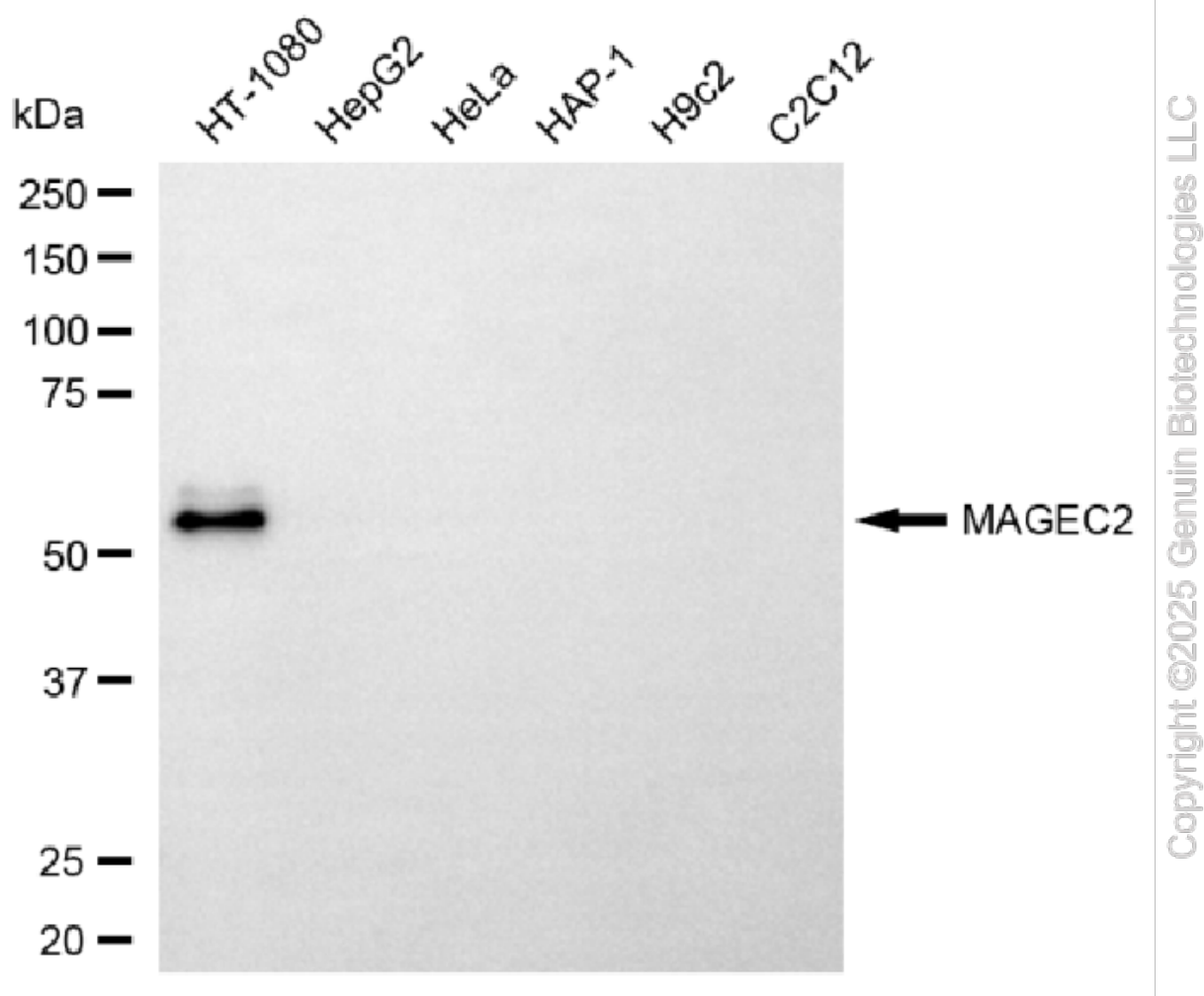
SUPPORT@GENUINBIOTECH.COM
TEL: +1-540-855-7041

ORDERS

SALES@GENUINBIOTECH.COM
FAX: +1-540-855-7041

WWW.GENUINBIOTECH.COM

Validation Data



Western blotting analysis using anti-MAGEC2 antibody (Cat#5557). Total cell lysates (30 μ g) from various cell lines were loaded and separated by SDS-PAGE. The blot was incubated with anti-MAGEC2 antibody (Cat#5557, 1:5,000) and HRP-conjugated goat anti-rabbit secondary antibody (Cat#201, 1:20,000) respectively. Image was developed using FeQ™ ECL Substrate Kit (Cat#226).

SUPPORT

SUPPORT@GENUINBIOTECH.COM
TEL: +1-540-855-7041

ORDERS

SALES@GENUINBIOTECH.COM
FAX: +1-540-855-7041

WWW.GENUINBIOTECH.COM