

## Catalog #: 5567

### Aliases

DHX8; DEAH-Box Helicase 8; PRPF22; Prp22; HRH1; Dhr2; DDX8; DEAD/H (Asp-Glu-Ala-Asp/His) Box Polypeptide 8 (RNA Helicase); DEAH (Asp-Glu-Ala-His) Box Polypeptide 8; ATP-Dependent RNA Helicase DHX8; DEAH Box Protein 8; RNA Helicase HRH1; EC 3.6.4.13; EC 3.6.1

### Background

Gene Name: DHX8

NCBI Gene Entry: [1659](#)

UniProt Entry: [Q14562](#)

### Application Information

Molecular Weight: Predicted, 139 kDa; observed, 139 kDa

Clonality: Rabbit monoclonal antibody

Clone ID: 25GB4295

Species Reactivity: Human, mouse, rat

Applications Tested: Western blotting (WB), flow cytometry (FCM)

### Immunogen

A synthesized peptide derived from human DHX8

### Isotype

Rabbit IgG

### Storage Buffer

Supplied in PBS (pH 7.4) containing 50% glycerol, and 0.02% sodium azide.

### Storage

Store at -20 °C for one year.

### Recommended Dilutions

Western Blotting (WB): 1:1,000-1:5,000

**Note:** This product is for research use only.

### Validation Data

---

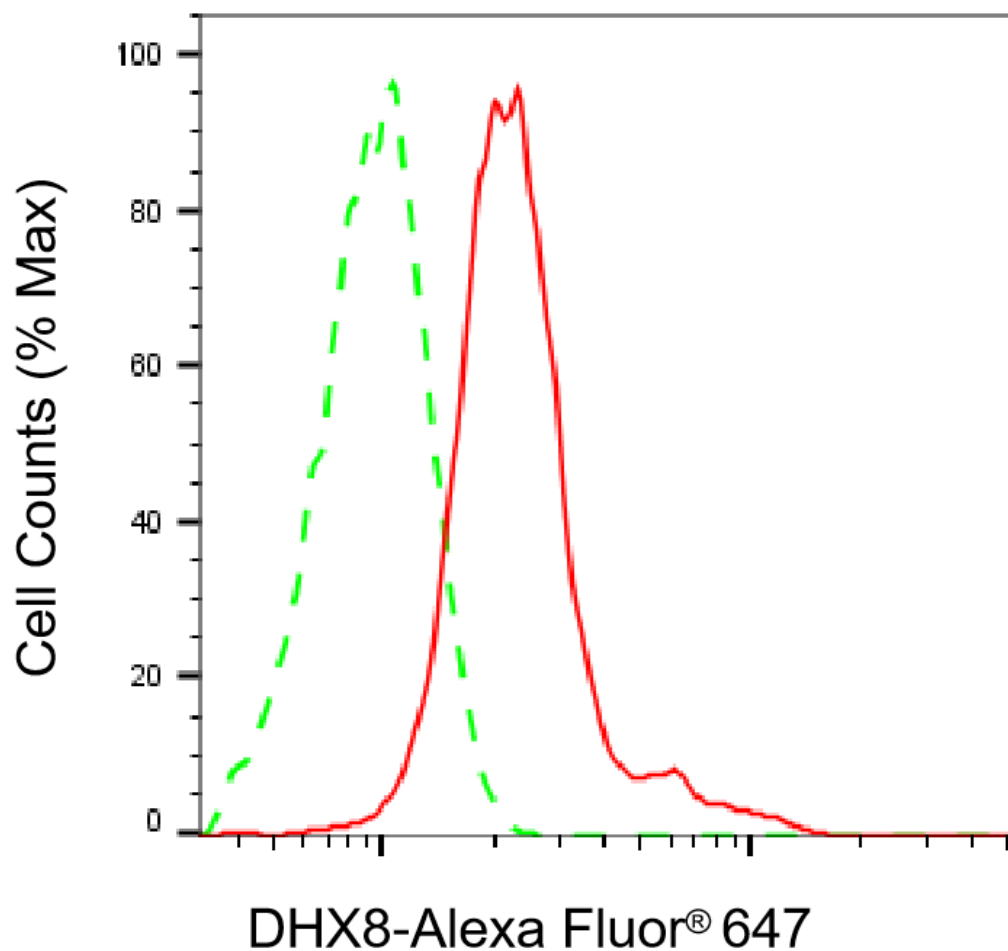
#### SUPPORT

SUPPORT@GENUINBIOTECH.COM  
TEL: +1-540-855-7041

#### ORDERS

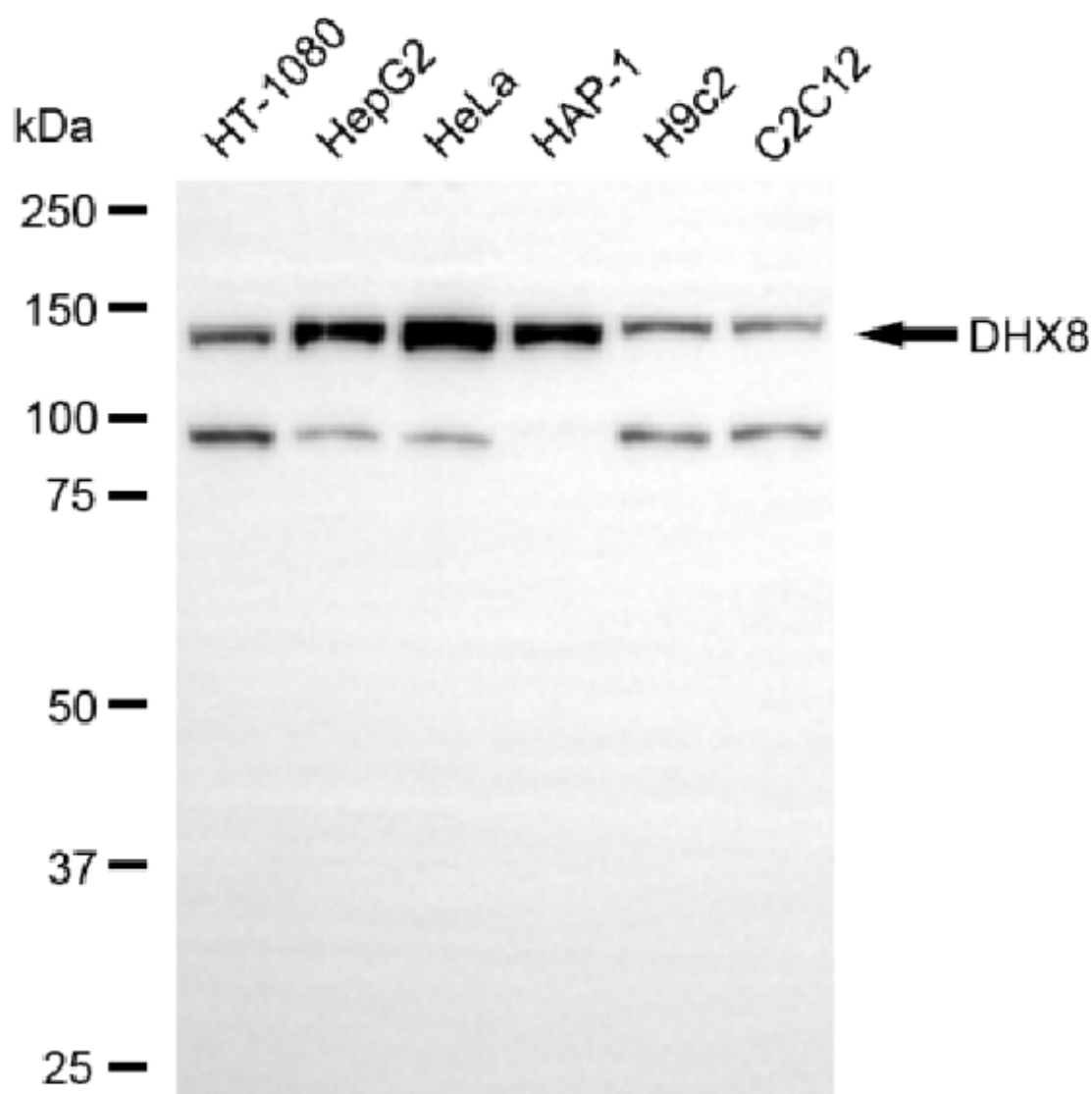
SALES@GENUINBIOTECH.COM  
FAX: +1-540-855-7041

[WWW.GENUINBIOTECH.COM](http://WWW.GENUINBIOTECH.COM)



Copyright ©2025 Genuin Biotechnologies LLC

Flow cytometric analysis of DHX8 expression in HepG2 cells using anti-DHX8 antibody (Cat#5567, 1:2,000). Green, isotype control; red, DHX8.



Copyright ©2025 Genuin Biotechnologies LLC

Western blotting analysis using anti-DHX8 antibody (Cat#5567). Total cell lysates (30  $\mu$ g) from various cell lines were loaded and separated by SDS-PAGE. The blot was incubated with anti-DHX8 antibody (Cat#5567, 1:5,000) and HRP-conjugated goat anti-rabbit secondary antibody (Cat#201, 1:20,000) respectively. Image was developed using NaQ™ ECL Substrate Kit (Cat#716).

**SUPPORT**

SUPPORT@GENUINBIOTECH.COM  
TEL: +1-540-855-7041

**ORDERS**

SALES@GENUINBIOTECH.COM  
FAX: +1-540-855-7041

**WWW.GENUINBIOTECH.COM**