

Catalog #: 5569

Aliases

ENO3; Enolase 3; Beta-Enolase; Enolase 3 (Beta, Muscle); Muscle Enriched Enolase; Muscle-Specific Enolase; Skeletal Muscle Enolase; EC 4.2.1.11; MSE; 2-Phospho-D-Glycerate Hydrolyase; 2-Phospho-D-Glycerate Hydrolyase; Enolase 3, (Beta, Muscle); EC 4.2.1; GSD13

Background

Gene Name: ENO3

NCBI Gene Entry: [2027](#)

UniProt Entry: [P13929](#)

Application Information

Molecular Weight: Predicted, 47 kDa; observed, 47 kDa

Clonality: Rabbit monoclonal antibody

Clone ID: 25GB4305

Species Reactivity: Human, mouse, rat

Applications Tested: Western blotting (WB), flow cytometry (FCM), immunocytochemistry (IC)

Immunogen

A synthesized peptide derived from human ENO3

Isotype

Rabbit IgG

Storage Buffer

Supplied in PBS (pH 7.4) containing 50% glycerol, and 0.02% sodium azide.

Storage

Store at -20 °C for one year.

Recommended Dilutions

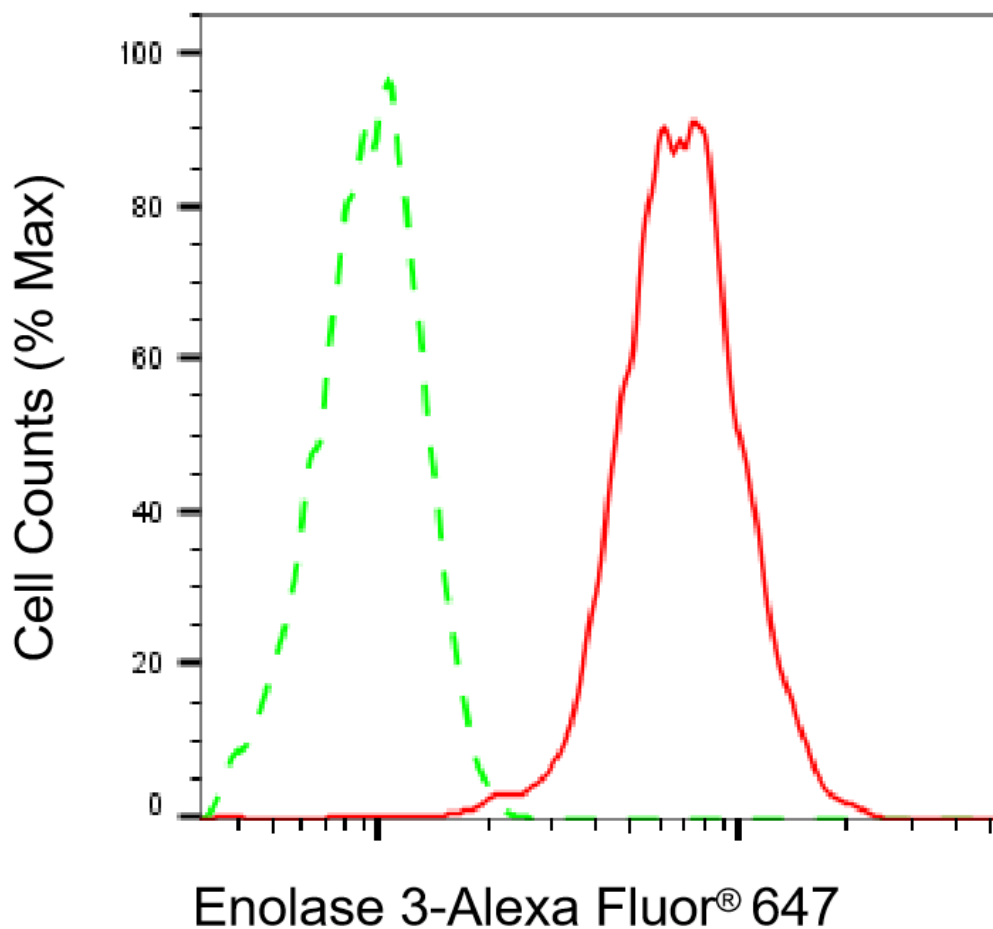
Western Blotting (WB): 1:1,000-1:5,000

Flow Cytometry (FCM): 1:2,000

Immunocytochemistry (IC): 1:100-1:1,000

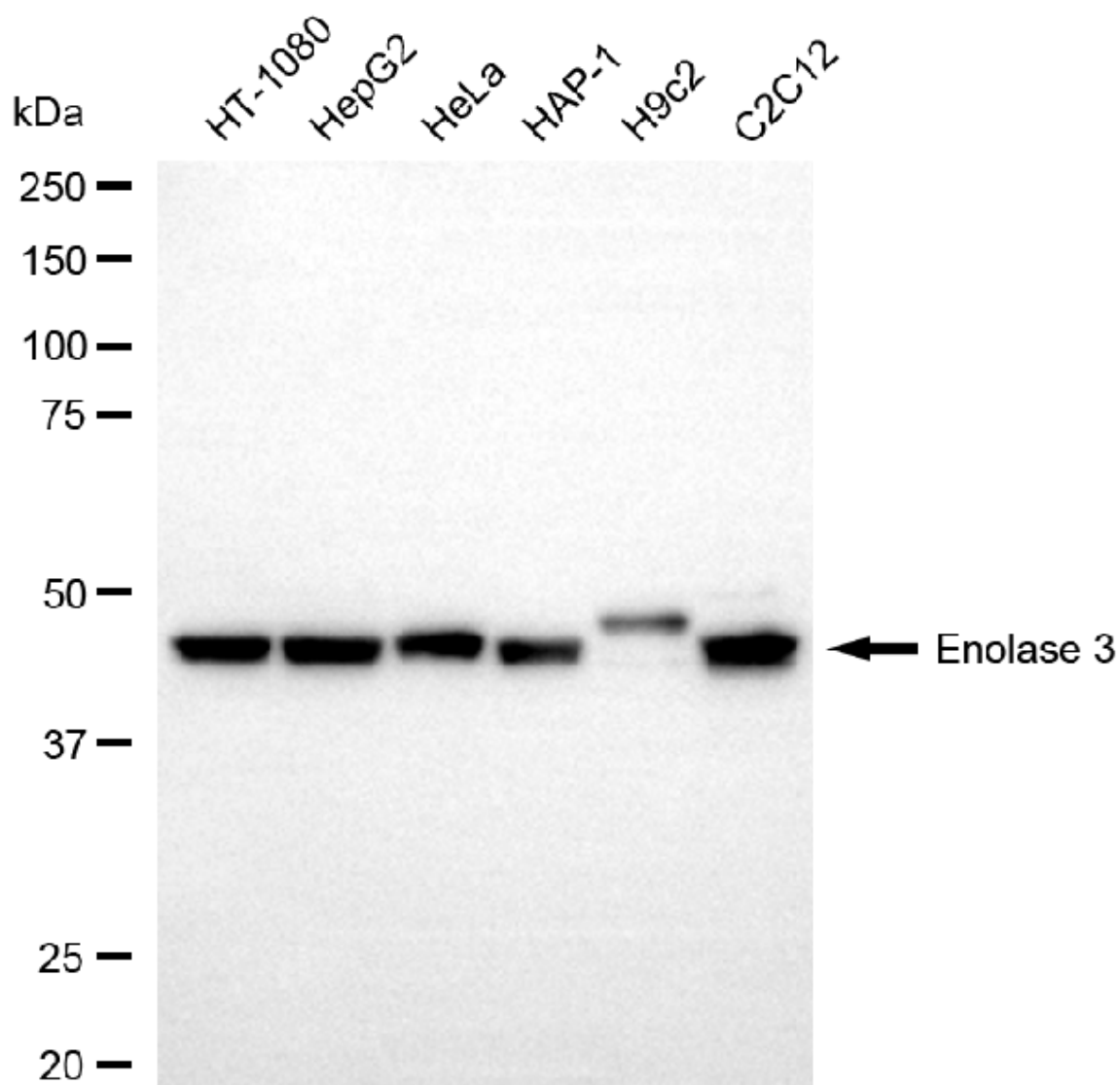
Note: This product is for research use only.

Validation Data



Copyright ©2025 Genuin Biotechnologies LLC

Flow cytometric analysis of Enolase 3 expression in HepG2 cells using anti-Enolase 3 antibody (Cat#5569, 1:2,000). Green, isotype control; red, Enolase 3.



Copyright ©2025 Genuin Biotechnologies LLC

Western blotting analysis using anti-enolase 3 antibody (Cat#5569). Total cell lysates (30 μ g) from various cell lines were loaded and separated by SDS-PAGE. The blot was incubated with anti-enolase 3 antibody (Cat#5569, 1:5,000) and HRP-conjugated goat anti-rabbit secondary antibody (Cat#201, 1:20,000) respectively. Image was developed using NaQ™ ECL Substrate Kit (Cat#716).

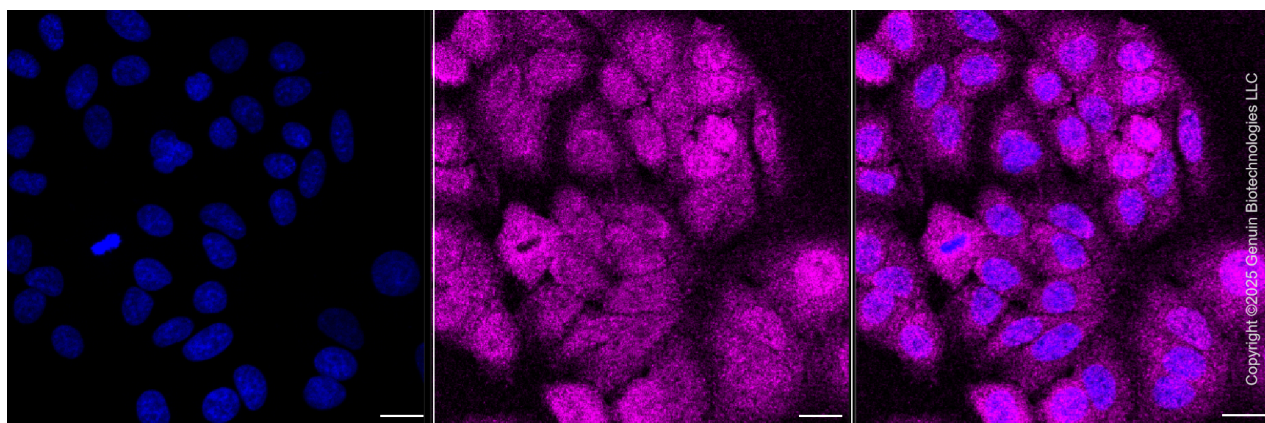
SUPPORT

SUPPORT@GENUINBIOTECH.COM
TEL: +1-540-855-7041

ORDERS

SALES@GENUINBIOTECH.COM
FAX: +1-540-855-7041

WWW.GENUINBIOTECH.COM



Immunocytochemical staining of HepG2 cells with anti-Enolase 3 antibody (Cat#5569, 1:1,000) . Nuclei were stained blue with DAPI; Enolase 3 was stained magenta with Alexa Fluor® 647. Images were taken using Leica stellaris 5. Protein abundance based on laser Intensity and smart gain: Medium. Scale bar, 20 μ m.