

## Catalog #: 5575

### Aliases

INHBA; Inhibin Subunit Beta A; Inhibin, Beta A (Activin A, Activin AB Alpha Polypeptide); Erythroid Differentiation Protein; Inhibin Beta A Chain; Activin Beta-A Chain; EDF; Follicle-Stimulating Hormone-Releasing Protein; Erythroid Differentiation Factor; Inhibin Beta A Subunit; FSH-Releasing Protein; Inhibin, Beta A; Inhibin, Beta-1; FRP

### Background

Gene Name: INHBA

NCBI Gene Entry: [3624](#)

UniProt Entry: [P08476](#)

### Application Information

Molecular Weight: Predicted, 47 kDa; observed, 44 kDa

Clonality: Rabbit monoclonal antibody

Clone ID: 25GB4335

Species Reactivity: Human, mouse, rat

Applications Tested: Western blotting (WB)

### Immunogen

A synthesized peptide derived from human INHBA

### Isotype

Rabbit IgG

### Storage Buffer

Supplied in PBS (pH 7.4) containing 50% glycerol, and 0.02% sodium azide.

### Storage

Store at -20 °C for one year.

### Recommended Dilutions

Western Blotting (WB): 1:1,000-1:5,000

**Note:** This product is for research use only.

### Validation Data

---

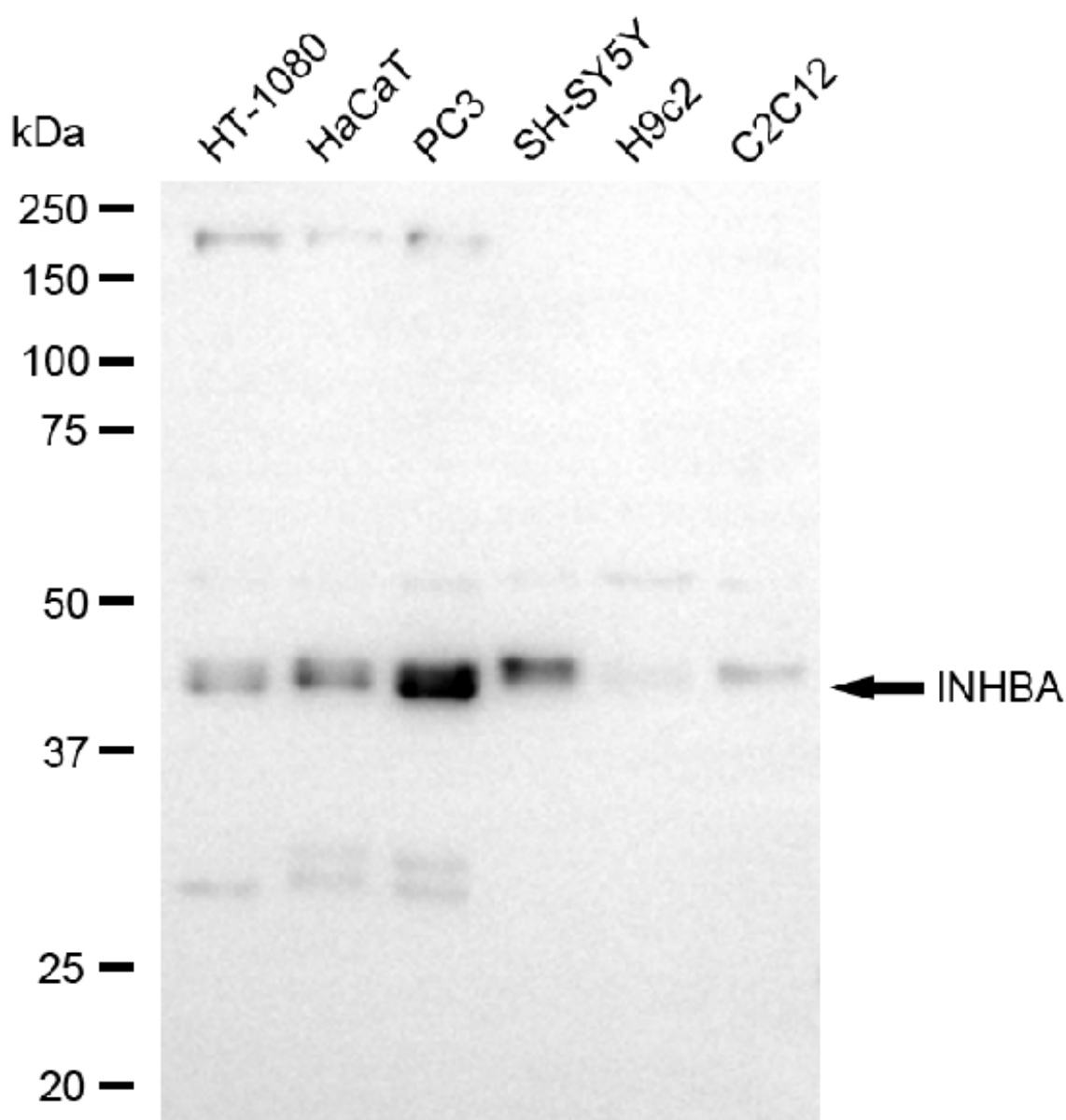
#### SUPPORT

SUPPORT@GENUINBIOTECH.COM  
TEL: +1-540-855-7041

#### ORDERS

SALES@GENUINBIOTECH.COM  
FAX: +1-540-855-7041

[WWW.GENUINBIOTECH.COM](http://WWW.GENUINBIOTECH.COM)



Copyright ©2025 Genuin Biotechnologies LLC

Western blotting analysis using anti-INHBA antibody (Cat#5575). Total cell lysates (30  $\mu$ g) from various cell lines were loaded and separated by SDS-PAGE. The blot was incubated with anti-INHBA antibody (Cat#5575, 1:5,000) and HRP-conjugated goat anti-rabbit secondary antibody (Cat#201, 1:20,000) respectively. Image was developed using FeQ™ ECL Substrate Kit (Cat#226).

**SUPPORT**

SUPPORT@GENUINBIOTECH.COM  
TEL: +1-540-855-7041

**ORDERS**

SALES@GENUINBIOTECH.COM  
FAX: +1-540-855-7041

[WWW.GENUINBIOTECH.COM](http://WWW.GENUINBIOTECH.COM)