

## Catalog #: 5586

### Aliases

NOVA1; NOVA Alternative Splicing Regulator 1; Neuro-Oncological Ventral Antigen 1; NOVA-1; Ventral Neuron-Specific Protein 1; Onconeural Ventral Antigen 1; RNA-Binding Protein Nova-1; Paraneoplastic Ri Antigen

### Background

Gene Name: NOVA1

NCBI Gene Entry: [4857](#)

UniProt Entry: [P51513](#)

### Application Information

Molecular Weight: Predicted, 52 kDa; observed, 55 kDa

Clonality: Rabbit monoclonal antibody

Clone ID: 25GB4390

Species Reactivity: Human

Applications Tested: Western blotting (WB), flow cytometry (FCM)

### Immunogen

A synthesized peptide derived from human NOVA1

### Isotype

Rabbit IgG

### Storage Buffer

Supplied in PBS (pH 7.4) containing 50% glycerol, and 0.02% sodium azide.

### Storage

Store at -20 °C for one year.

### Recommended Dilutions

Western Blotting (WB): 1:1,000-1:5,000

Flow Cytometry (FCM): 1:2,000

**Note:** This product is for research use only.

### Validation Data

---

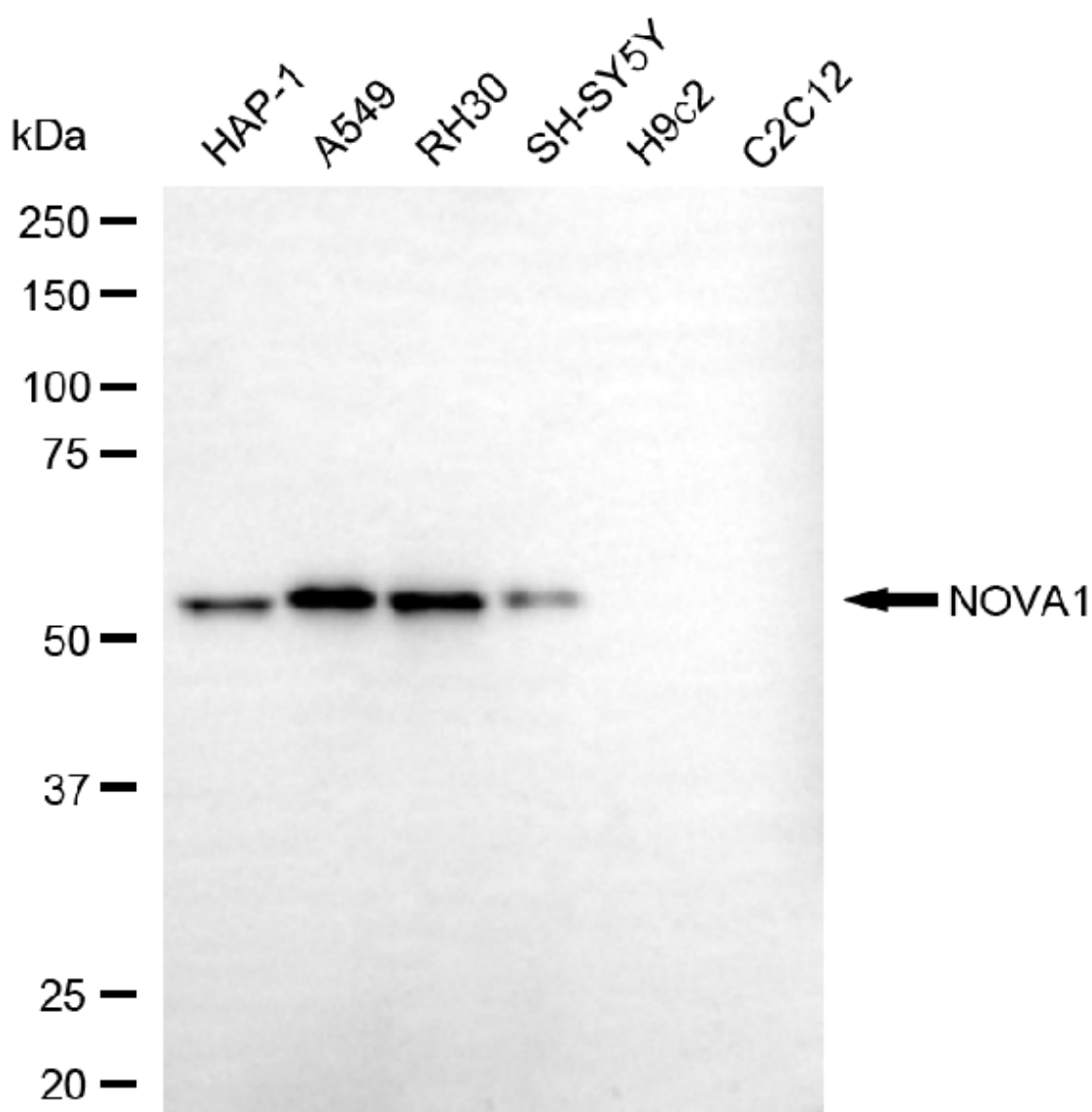
#### SUPPORT

SUPPORT@GENUINBIOTECH.COM  
TEL: +1-540-855-7041

#### ORDERS

SALES@GENUINBIOTECH.COM  
FAX: +1-540-855-7041

[WWW.GENUINBIOTECH.COM](http://WWW.GENUINBIOTECH.COM)



Copyright ©2025 Genuin Biotechnologies LLC

Western blotting analysis using anti-NOVA1 antibody (Cat#5586). Total cell lysates (30  $\mu$ g) from various cell lines were loaded and separated by SDS-PAGE. The blot was incubated with anti-NOVA1 antibody (Cat#5586, 1:5,000) and HRP-conjugated goat anti-rabbit secondary antibody (Cat#201, 1:20,000) respectively. Image was developed using FeQ™ ECL Substrate Kit (Cat#226).

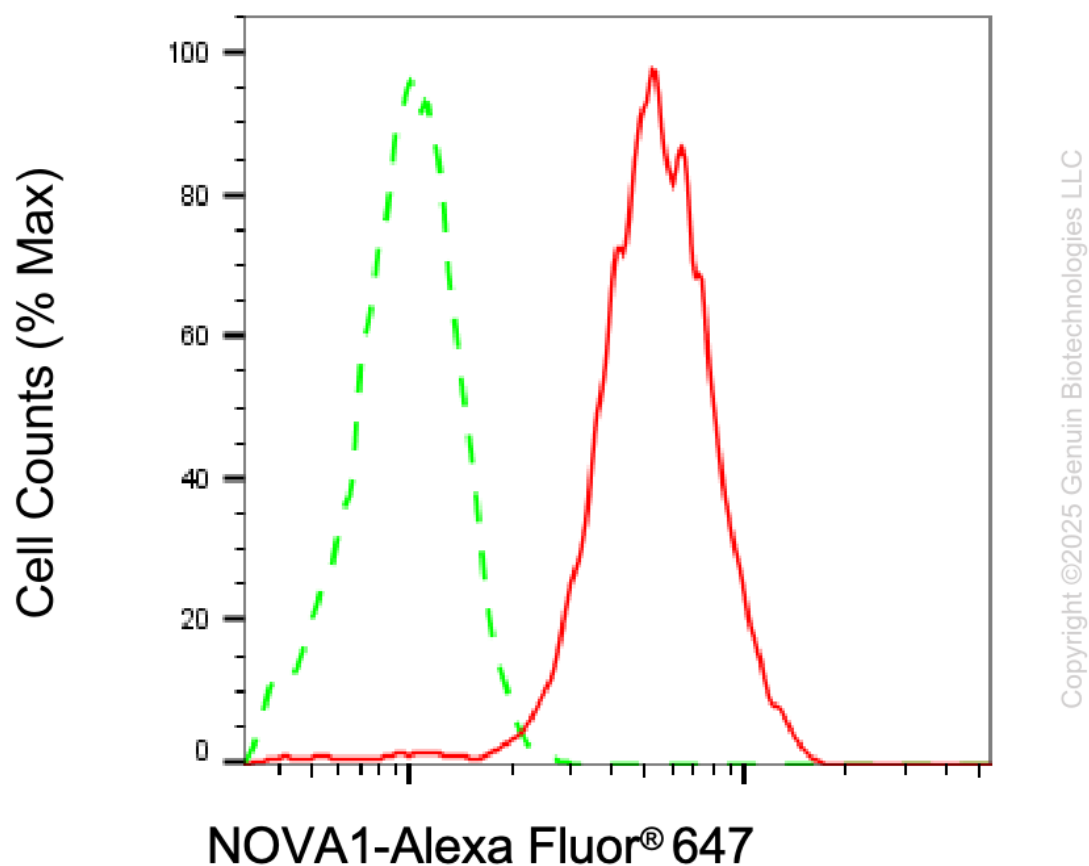
**SUPPORT**

SUPPORT@GENUINBIOTECH.COM  
TEL: +1-540-855-7041

**ORDERS**

SALES@GENUINBIOTECH.COM  
FAX: +1-540-855-7041

[WWW.GENUINBIOTECH.COM](http://WWW.GENUINBIOTECH.COM)



Flow cytometric analysis of NOVA1 expression in A549 cells using anti-NOVA1 antibody (Cat#5586, 1:2,000). Green, isotype control; red, NOVA1.