

Anti-Phospho-PAK1/2/3 (Ser144/Ser141/Ser154) Rabbit Monoclonal Antibody



Catalog #: 5588

Aliases

PAK3; P21 (RAC1) Activated Kinase 3; BPAK; P21 Protein (Cdc42/Rac)-Activated Kinase 3; Serine/Threonine-Protein Kinase PAK 3; P21 (CDKN1A)-Activated Kinase 3; Oligophrenin-3; EC 2.7.11.1; Beta-PAK; HPAK3; MRX30; MRX47; OPHN3; PAK-3; Adriamycin Resistance-Associated; Mental Retardation, X-Linked; P21-Activated Kinase 3; EC 2.7.11; PAK3beta; XLID30; ARA

Background

Gene Name: PAK3

NCBI Gene Entry: [5063](#)

UniProt Entry: [O75914](#)

Application Information

Molecular Weight: Predicted, 62 kDa; observed, 55 kDa

Clonality: Rabbit monoclonal antibody

Clone ID: 25GB4400

Species Reactivity: Human, mouse, rat

Applications Tested: Western blotting (WB)

Immunogen

A synthesized peptide derived from human Phospho-PAK1/2/3 (Ser144/Ser141/Ser154)

Isotype

Rabbit IgG

Storage Buffer

Supplied in PBS (pH 7.4) containing 50% glycerol, and 0.02% sodium azide.

Storage

Store at -20 °C for one year.

Recommended Dilutions

Western Blotting (WB): 1:1,000-1:5,000

Note: This product is for research use only.

SUPPORT

SUPPORT@GENUINBIOTECH.COM
TEL: +1-540-855-7041

ORDERS

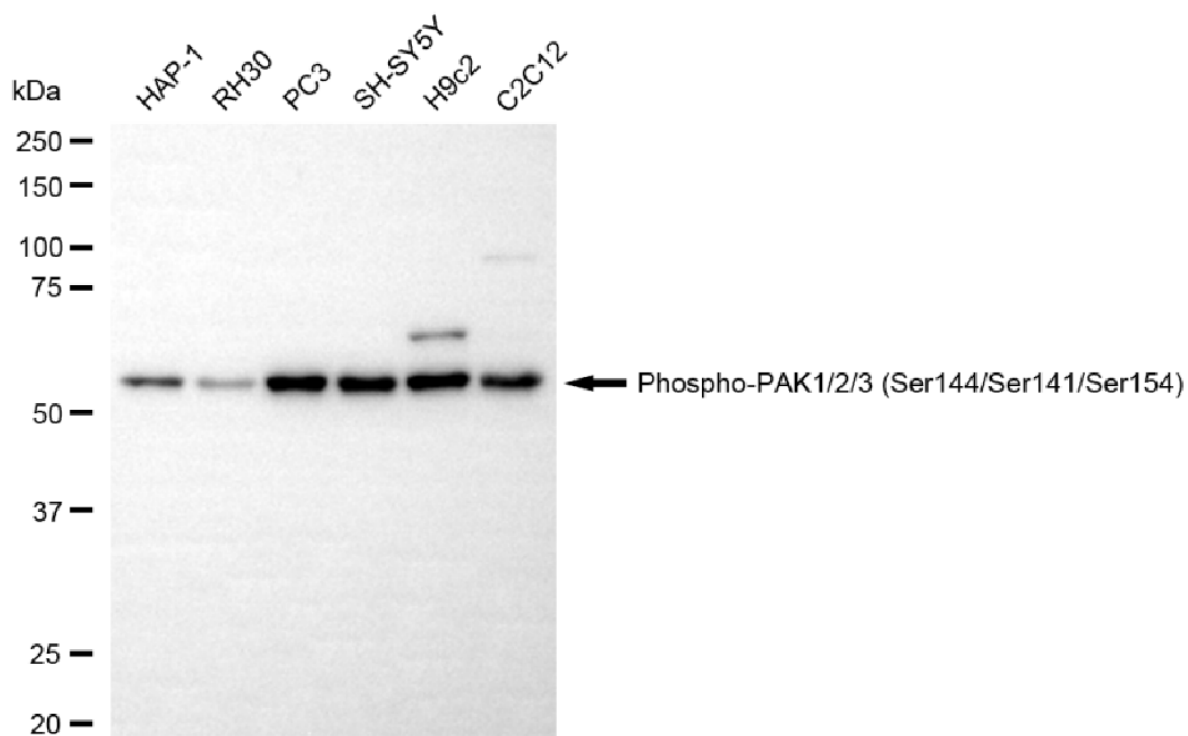
SALES@GENUINBIOTECH.COM
FAX: +1-540-855-7041

WWW.GENUINBIOTECH.COM

Anti-Phospho-PAK1/2/3 (Ser144/Ser141/Ser154) Rabbit Monoclonal Antibody

PAGE 2

Validation Data



Copyright ©2025 Genuin Biotechnologies LLC

Western blotting analysis using anti-phospho-PAK1/2/3 (Ser144/Ser141/Ser154) antibody (Cat#5588). Total cell lysates (30 μ g) from various cell lines were loaded and separated by SDS-PAGE. The blot was incubated with anti-phospho-PAK1/2/3 (Ser144/Ser141/Ser154) antibody (Cat#5588, 1:5,000) and HRP-conjugated goat anti-rabbit secondary antibody (Cat#201, 1:20,000) respectively. Image was developed using NaQ™ ECL Substrate Kit (Cat#716).

SUPPORT

SUPPORT@GENUINBIOTECH.COM
TEL: +1-540-855-7041

ORDERS

SALES@GENUINBIOTECH.COM
FAX: +1-540-855-7041

WWW.GENUINBIOTECH.COM