

Catalog #: 5589

Aliases

PHLDA1; Pleckstrin Homology Like Domain Family A Member 1; TDAG51; PHRIP; DT1P1B11; Pleckstrin Homology-Like Domain Family A Member 1; T-Cell Death-Associated Gene 51 Protein; Apoptosis-Associated Nuclear Protein; Proline- And Glutamine-Rich Protein; Proline- And Histidine-Rich Protein; Proline-Histidine Rich Protein; PQ-Rich Protein; PQR Protein; Pleckstrin Homology-Like Domain, Family A, Member 1; T-Cell Death-Associated Gene 51

Background

Gene Name: PHLDA1

NCBI Gene Entry: [22822](#)

UniProt Entry: [Q8WV24](#)

Application Information

Molecular Weight: Predicted, 45 kDa; observed, 38 kDa

Clonality: Rabbit monoclonal antibody

Clone ID: 25GB4405

Species Reactivity: Human, rat

Applications Tested: Western blotting (WB), flow cytometry (FCM)

Immunogen

A synthesized peptide derived from human PHLDA1

Isotype

Rabbit IgG

Storage Buffer

Supplied in PBS (pH 7.4) containing 50% glycerol, and 0.02% sodium azide.

Storage

Store at -20 °C for one year.

Recommended Dilutions

Western Blotting (WB): 1:1,000-1:5,000

Flow Cytometry (FCM): 1:2,000

SUPPORT

SUPPORT@GENUINBIOTECH.COM
TEL: +1-540-855-7041

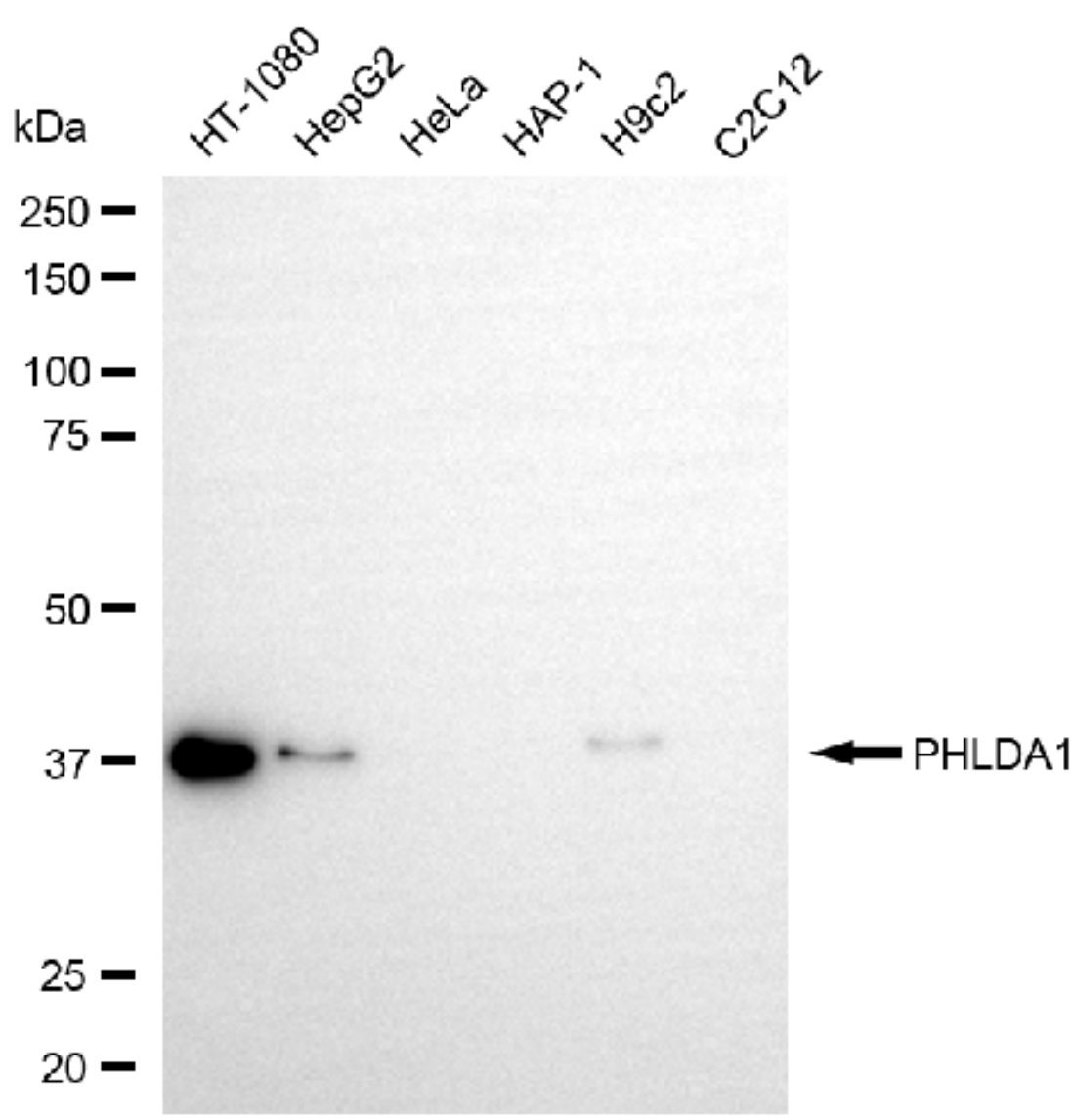
ORDERS

SALES@GENUINBIOTECH.COM
FAX: +1-540-855-7041

WWW.GENUINBIOTECH.COM

Note: This product is for research use only.

Validation Data



Copyright ©2025 Genuin Biotechnologies LLC

Western blotting analysis using anti-PHLDA1 antibody (Cat#5589). Total cell lysates (30 µg) from various cell lines were loaded and separated by SDS-PAGE. The blot was incubated with anti-PHLDA1 antibody (Cat#5589, 1:5,000) and HRP-conjugated goat anti-rabbit secondary antibody (Cat#201, 1:20,000) respectively. Image was developed using NaQ™ ECL Substrate Kit (Cat#716).

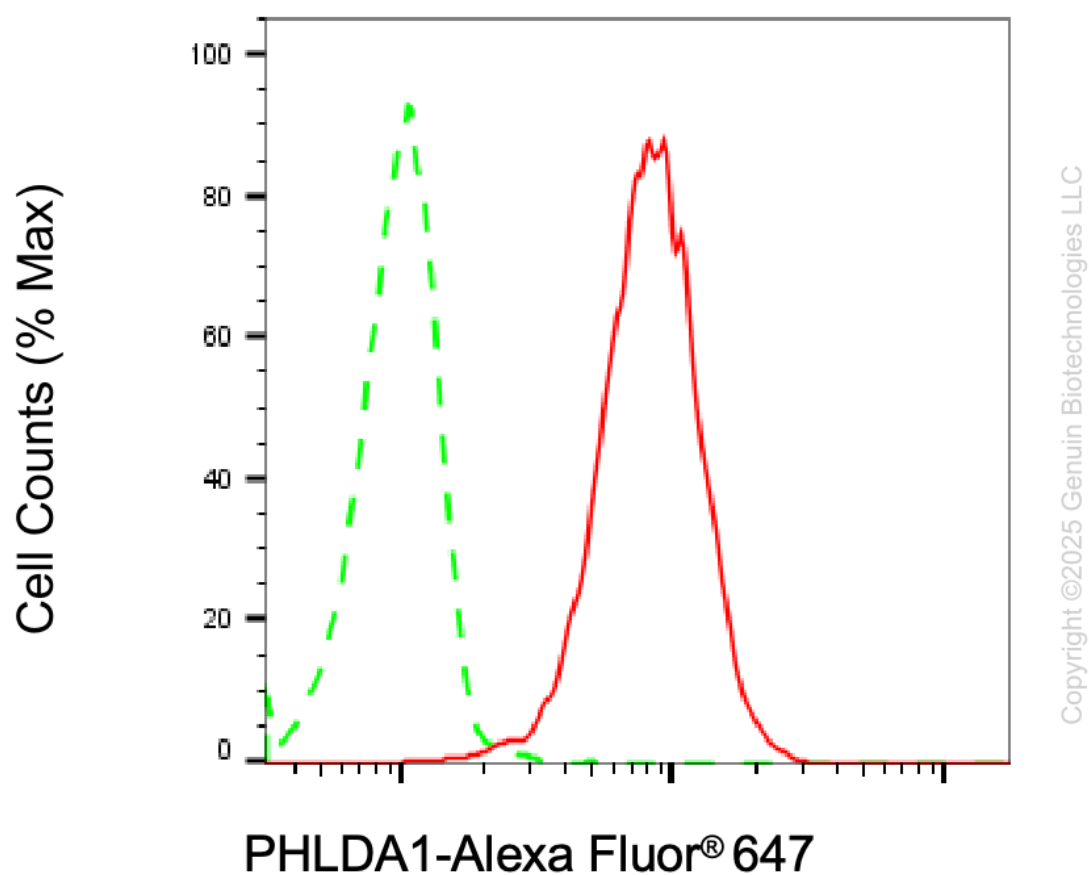
SUPPORT

SUPPORT@GENUINBIOTECH.COM
TEL: +1-540-855-7041

ORDERS

SALES@GENUINBIOTECH.COM
FAX: +1-540-855-7041

WWW.GENUINBIOTECH.COM



Flow cytometric analysis of PHLDA1 expression in HT-1080 cells using anti-PHLDA1 antibody (Cat#5589, 1:2,000). Green, isotype control; red, PHLDA1.