

Catalog #: 5590

Aliases

PICK1; Protein Interacting With PRKCA 1; PRKCABP; Protein Kinase C-Alpha-Binding Protein; Protein Interacting With C Kinase 1; PRKCA-Binding Protein; DJ1039K5; MGC15204; Protein Kinase C, Alpha Binding Protein; Protein Interacting With PRKCA; PICK

Background

Gene Name: PICK1

NCBI Gene Entry: [9463](#)

UniProt Entry: [Q9NRD5](#)

Application Information

Molecular Weight: Predicted, 47 kDa; observed, 50 kDa

Clonality: Rabbit monoclonal antibody

Clone ID: 25GB4410

Species Reactivity: Human

Applications Tested: Western blotting (WB), flow cytometry (FCM)

Immunogen

A synthesized peptide derived from human PICK1

Isotype

Rabbit IgG

Storage Buffer

Supplied in PBS (pH 7.4) containing 50% glycerol, and 0.02% sodium azide.

Storage

Store at -20 °C for one year.

Recommended Dilutions

Western Blotting (WB): 1:1,000-1:5,000

Note: This product is for research use only.

Validation Data

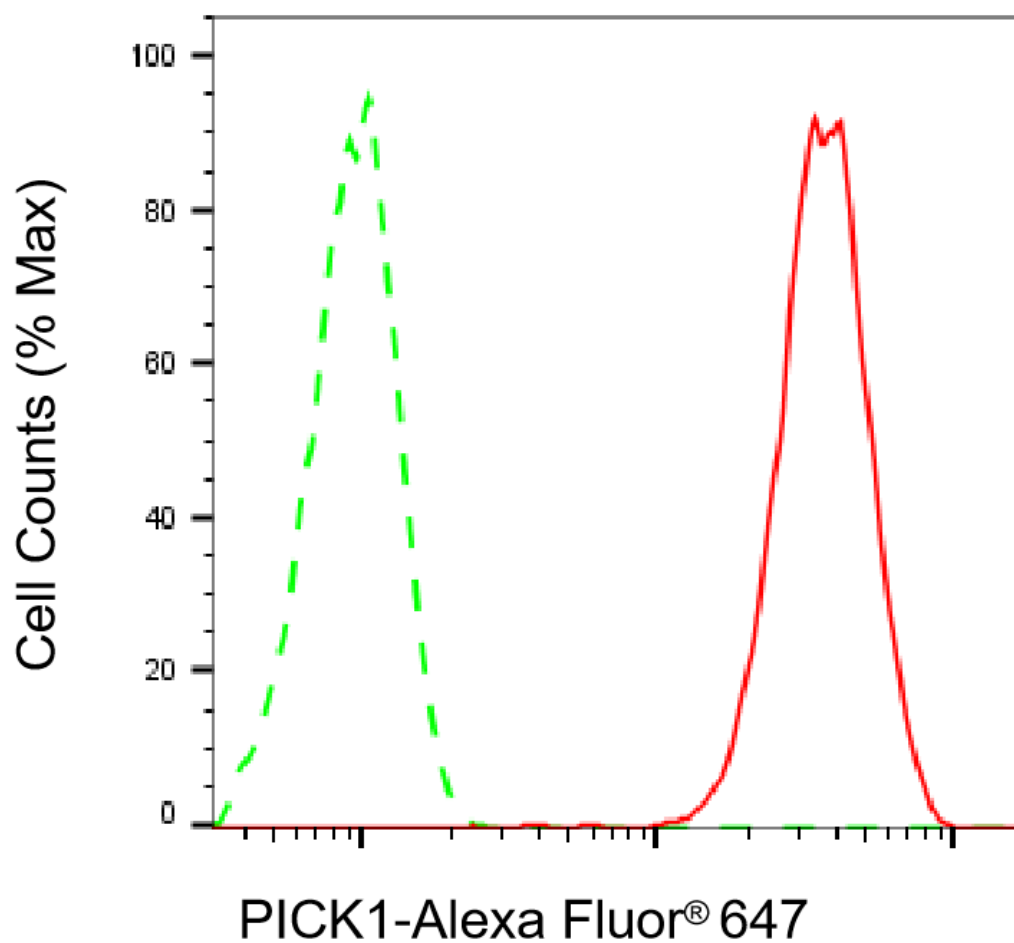
SUPPORT

SUPPORT@GENUINBIOTECH.COM
TEL: +1-540-855-7041

ORDERS

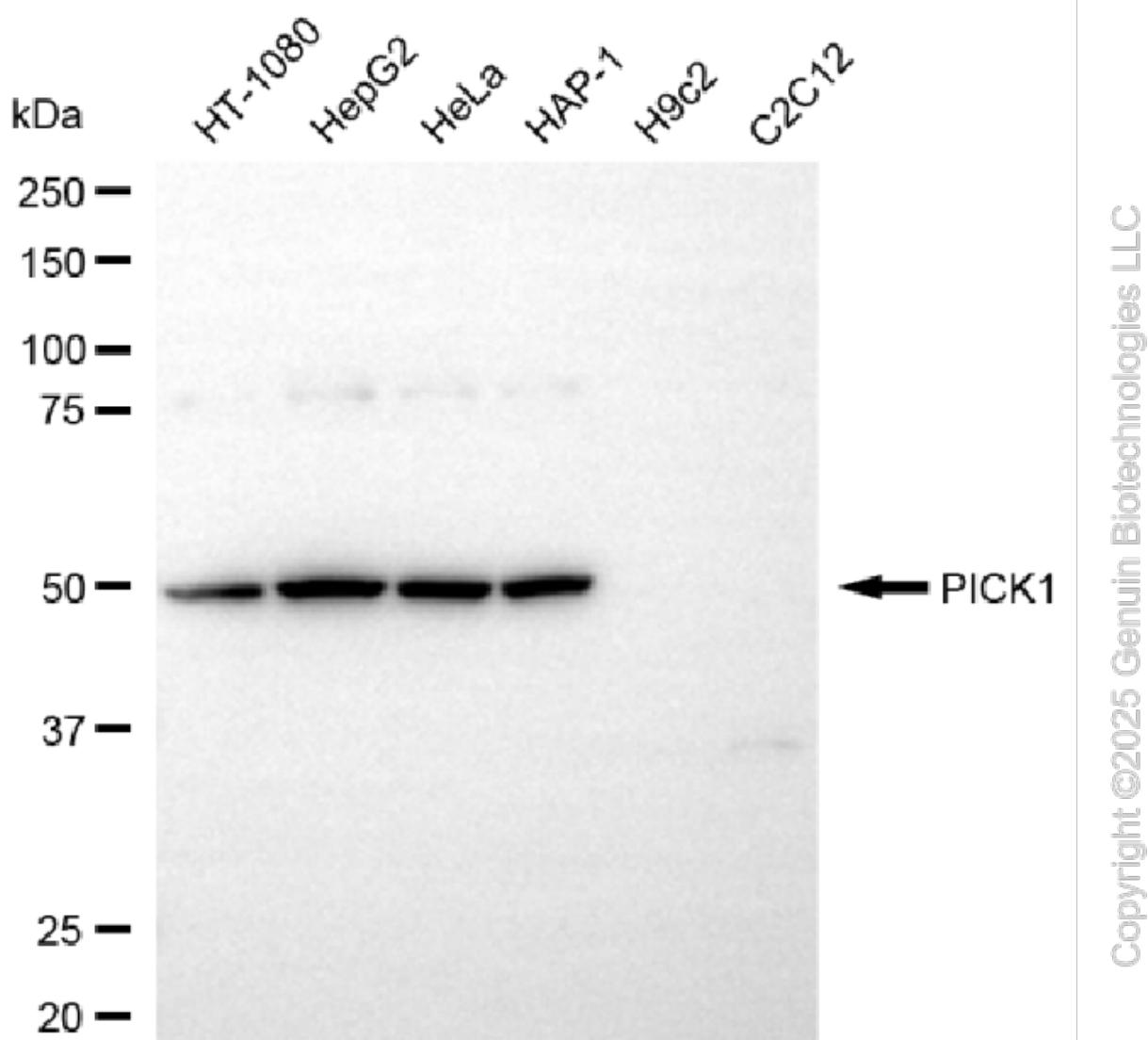
SALES@GENUINBIOTECH.COM
FAX: +1-540-855-7041

WWW.GENUINBIOTECH.COM



Copyright ©2025 Genuin Biotechnologies LLC

Flow cytometric analysis of PICK1 expression in HepG2 cells using anti-PICK1 antibody (Cat#5590, 1:2,000). Green, isotype control; red, PICK1.



Western blotting analysis using anti-PICK1 antibody (Cat#5590). Total cell lysates (30 μ g) from various cell lines were loaded and separated by SDS-PAGE. The blot was incubated with anti-PICK1 antibody (Cat#5590, 1:5,000) and HRP-conjugated goat anti-rabbit secondary antibody (Cat#201, 1:20,000) respectively. Image was developed using NaQ™ ECL Substrate Kit (Cat#716).

SUPPORT

SUPPORT@GENUINBIOTECH.COM
TEL: +1-540-855-7041

ORDERS

SALES@GENUINBIOTECH.COM
FAX: +1-540-855-7041

WWW.GENUINBIOTECH.COM