

Catalog #: 5592

Aliases

PRAME; PRAME Nuclear Receptor Transcriptional Regulator; CT130; MAPE; Melanoma Antigen Preferentially Expressed In Tumors; Preferentially Expressed Antigen In Melanoma; Preferentially Expressed Antigen Of Melanoma; Cancer/Testis Antigen 130; Opa-Interacting Protein 4; OIP-4; OIP4; Opa-Interacting Protein OIP4

Background

Gene Name: PRAME

NCBI Gene Entry: [23532](#)

UniProt Entry: [P78395](#)

Application Information

Molecular Weight: Predicted, 58 kDa; observed, 50 kDa

Clonality: Rabbit monoclonal antibody

Clone ID: 25GB4420

Species Reactivity: Human

Applications Tested: Western blotting (WB), flow cytometry (FCM)

Immunogen

Recombinant protein of human PRAME

Isotype

Rabbit IgG

Storage Buffer

Supplied in PBS (pH 7.4) containing 50% glycerol, and 0.02% sodium azide.

Storage

Store at -20 °C for one year.

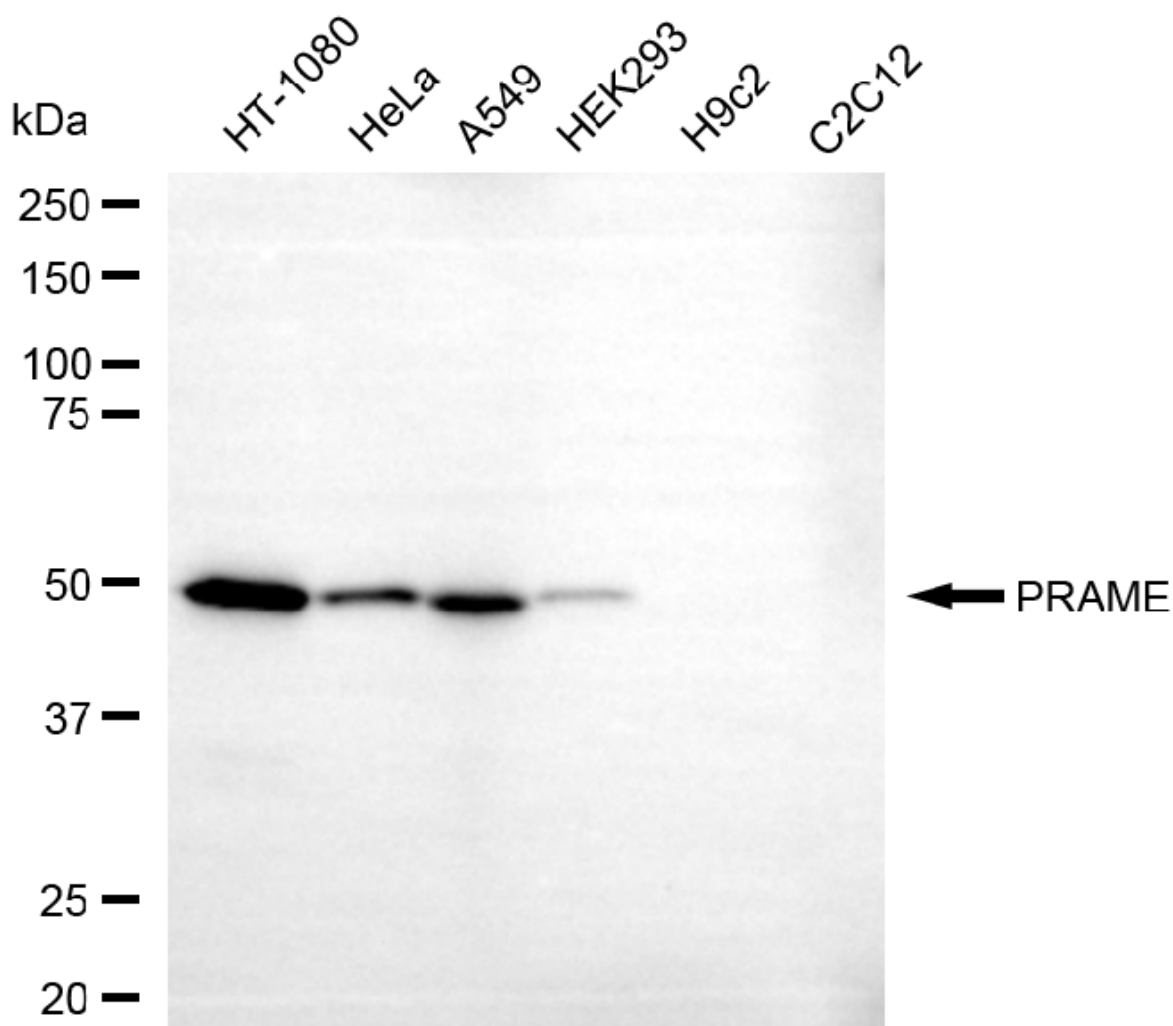
Recommended Dilutions

Western Blotting (WB): 1:1,000-1:5,000

Flow Cytometry (FCM): 1:2,000

Note: This product is for research use only.

Validation Data



Copyright ©2025 Genuin Biotechnologies LLC

Western blotting analysis using anti-PRAME antibody (Cat#5592). Total cell lysates (30 μ g) from various cell lines were loaded and separated by SDS-PAGE. The blot was incubated with anti-PRAME antibody (Cat#5592, 1:5,000) and HRP-conjugated goat anti-rabbit secondary antibody (Cat#201, 1:20,000) respectively. Image was developed using FeQ™ ECL Substrate Kit (Cat#226).

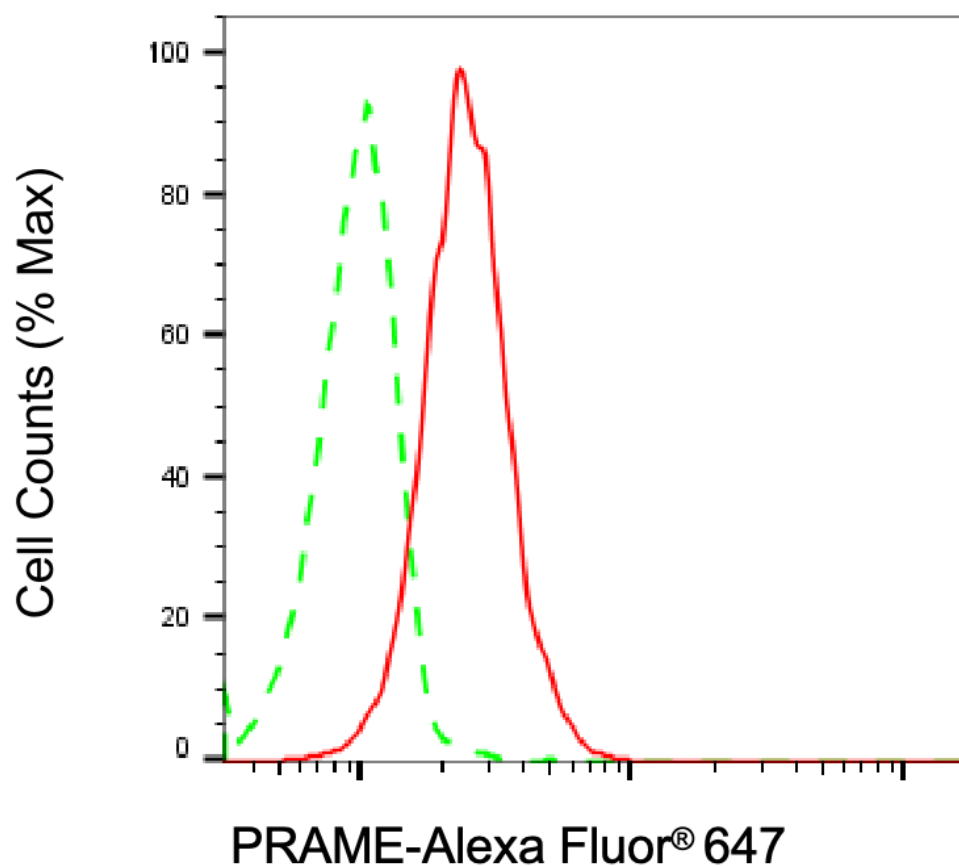
SUPPORT

SUPPORT@GENUINBIOTECH.COM
TEL: +1-540-855-7041

ORDERS

SALES@GENUINBIOTECH.COM
FAX: +1-540-855-7041

WWW.GENUINBIOTECH.COM



Copyright ©2025 Genuin Biotechnologies LLC

Flow cytometric analysis of PRAME expression in HT-1080 cells using anti-PRAME antibody (Cat#5592, 1:2,000). Green, isotype control; red, PRAME.