

## Catalog #: 5593

### Aliases

PRKACG; Protein Kinase CAMP-Activated Catalytic Subunit Gamma; PKACg; Protein Kinase, CAMP-Dependent, Gamma Catalytic Subunit; CAMP-Dependent Protein Kinase Catalytic Subunit Gamma; Protein Kinase, CAMP-Dependent, Catalytic, Gamma; EC 2.7.11.11; PKA C-Gamma; Serine(Threonine) Protein Kinase; EC 2.7.11; BDPLT19; KAPG

### Background

Gene Name: PRKACG

NCBI Gene Entry: [5568](#)

UniProt Entry: [P22612](#)

### Application Information

Molecular Weight: Predicted, 40 kDa; observed, 38 kDa

Clonality: Rabbit monoclonal antibody

Clone ID: 25GB4425

Species Reactivity: Human, mouse, rat

Applications Tested: Western blotting (WB), immunocytochemistry (IC), flow cytometry (FCM)

### Immunogen

Recombinant protein of human PRKACG

### Isotype

Rabbit IgG

### Storage Buffer

Supplied in PBS (pH 7.4) containing 50% glycerol, and 0.02% sodium azide.

### Storage

Store at -20 °C for one year.

### Recommended Dilutions

Western Blotting (WB): 1:1,000-1:5,000

Immunocytochemistry (IC): 1:100-1:1,000

Flow Cytometry (FCM): 1:2,000

---

#### SUPPORT

SUPPORT@GENUINBIOTECH.COM  
TEL: +1-540-855-7041

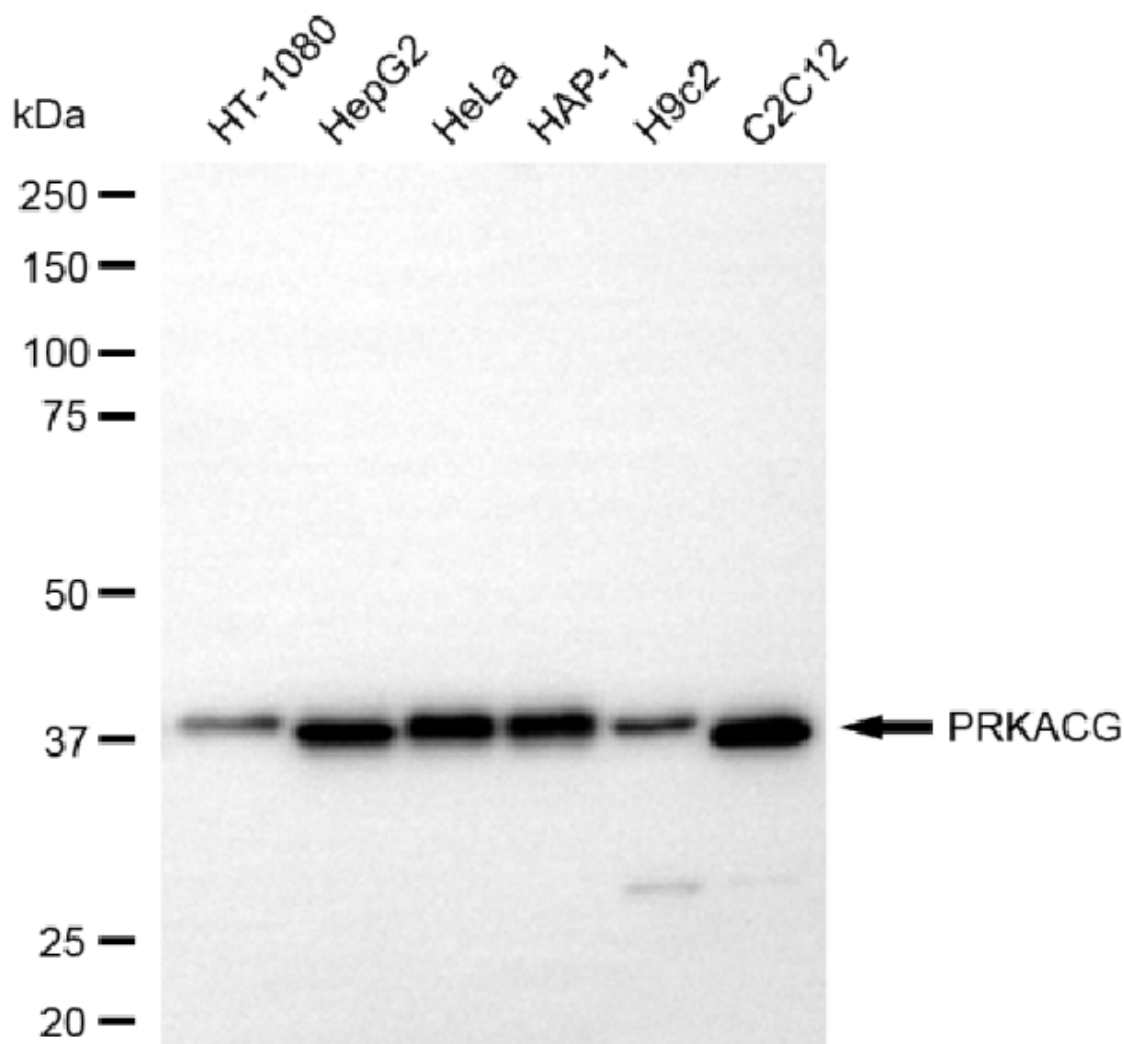
#### ORDERS

SALES@GENUINBIOTECH.COM  
FAX: +1-540-855-7041

[WWW.GENUINBIOTECH.COM](http://WWW.GENUINBIOTECH.COM)

**Note:** This product is for research use only.

## Validation Data



Copyright ©2025 Genuin Biotechnologies LLC

Western blotting analysis using anti-PRKACG antibody (Cat#5593). Total cell lysates (30  $\mu$ g) from various cell lines were loaded and separated by SDS-PAGE. The blot was incubated with anti-PRKACG antibody (Cat#5593, 1:5,000) and HRP-conjugated goat anti-rabbit secondary antibody (Cat#201, 1:20,000) respectively. Image was developed using NaQ™ ECL Substrate Kit (Cat#716).

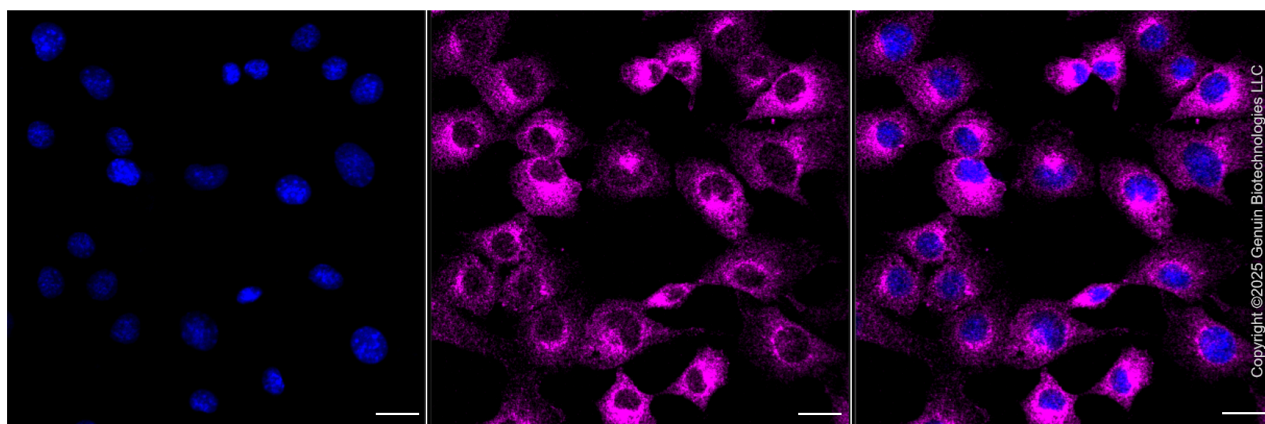
### SUPPORT

SUPPORT@GENUINBIOTECH.COM  
TEL: +1-540-855-7041

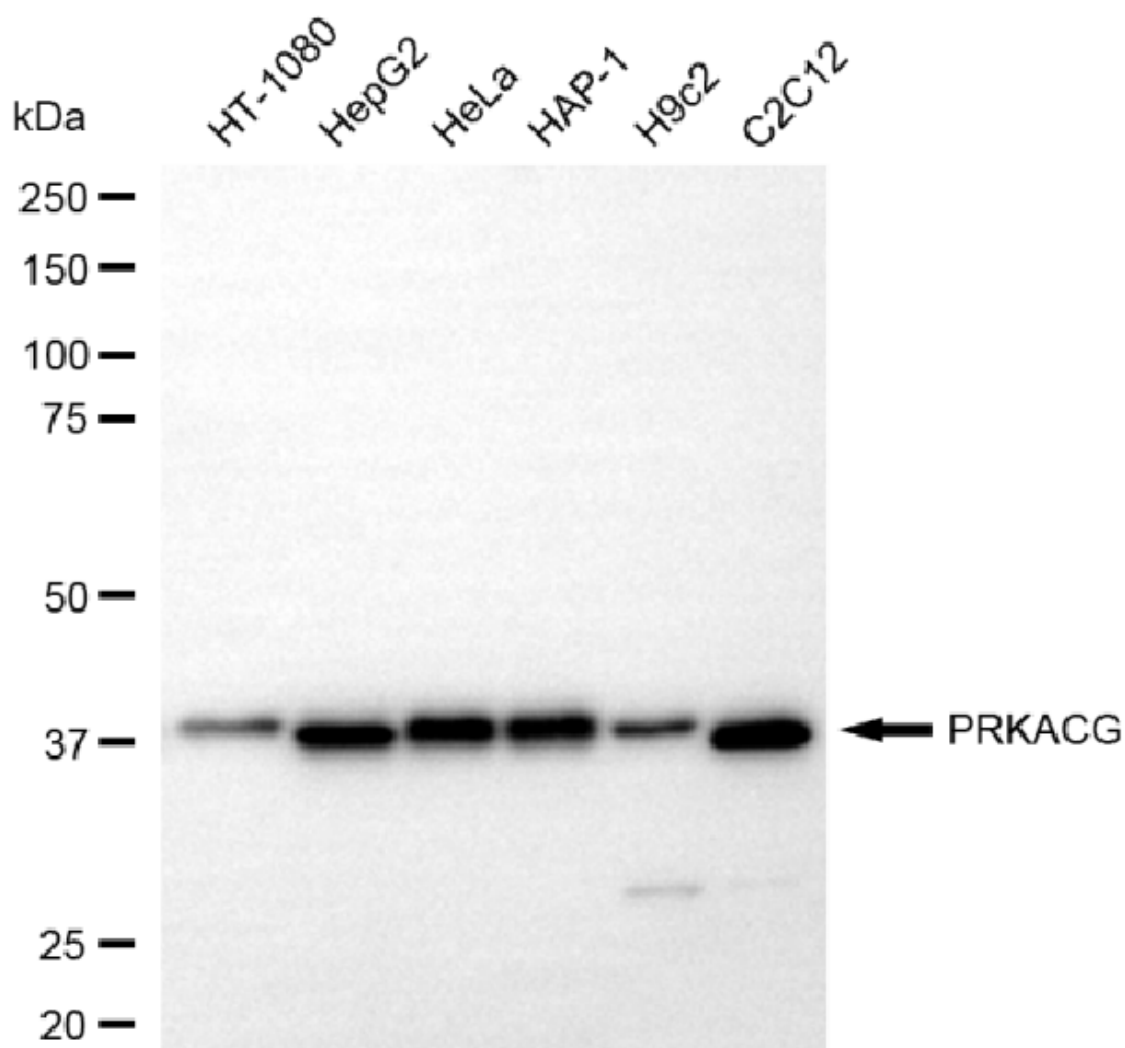
### ORDERS

SALES@GENUINBIOTECH.COM  
FAX: +1-540-855-7041

[WWW.GENUINBIOTECH.COM](http://WWW.GENUINBIOTECH.COM)



Immunocytochemical staining of C2C12 cells with anti-PRKACG antibody (Cat#5593, 1:1,000) . Nuclei were stained blue with DAPI; PRKACG was stained magenta with Alexa Fluor® 647. Images were taken using Leica stellaris 5. Protein abundance based on laser Intensity and smart gain: Medium. Scale bar, 20 µm.



Copyright ©2025 Genuin Biotechnologies LLC

**SUPPORT**

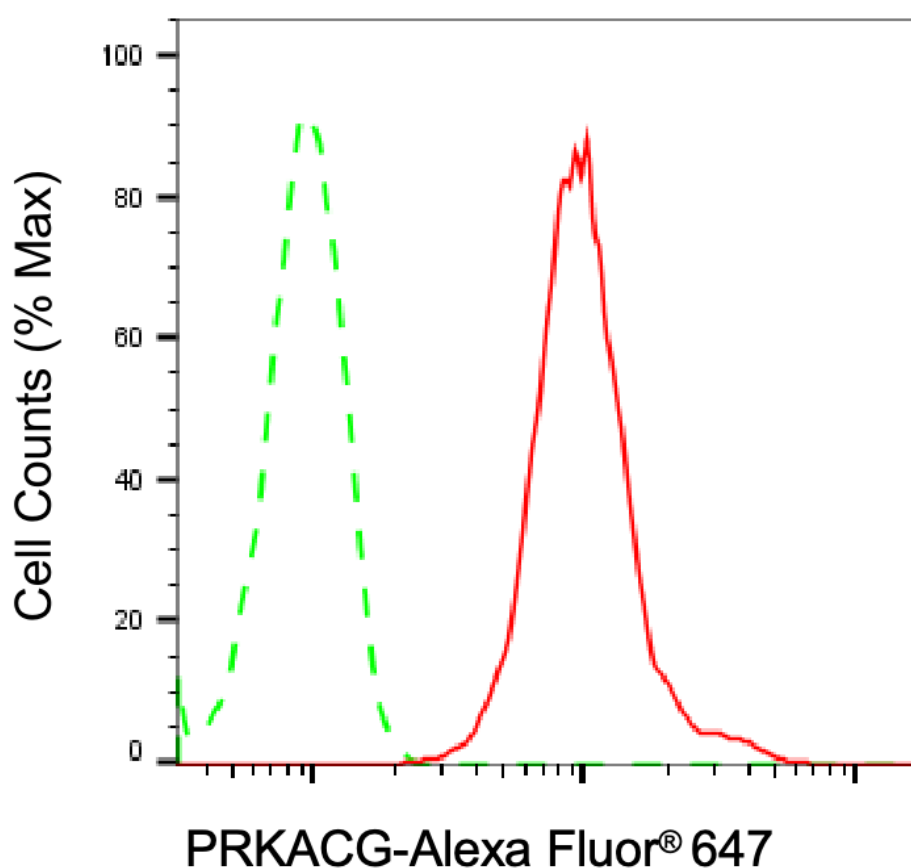
SUPPORT@GENUINBIOTECH.COM  
TEL: +1-540-855-7041

**ORDERS**

SALES@GENUINBIOTECH.COM  
FAX: +1-540-855-7041

WWW.GENUINBIOTECH.COM

Western blotting analysis using anti-PRKACG antibody (Cat#5593). Total cell lysates (30 µg) from various cell lines were loaded and separated by SDS-PAGE. The blot was incubated with anti-PRKACG antibody (Cat#5593, 1:5,000) and HRP-conjugated goat anti-rabbit secondary antibody (Cat#201, 1:20,000) respectively. Image was developed using NaQ™ ECL Substrate Kit (Cat#716).



Copyright ©2025 Genuin Biotechnologies LLC

Flow cytometric analysis of PRKACG expression in C2C12 cells using anti-PRKACG antibody (Cat#5593, 1:2,000). Green, isotype control; red, PRKACG.