

# Anti-Prostaglandin E Synthase Rabbit Monoclonal Antibody



**Catalog #: 5595**

## Aliases

PTGES; Prostaglandin E Synthase; MGST1-L1; PIG12; Microsomal Glutathione S-Transferase 1-Like 1; MGST-IV; TP53I12; MGST1L1; Tumor Protein P53 Inducible Protein 12; Microsomal Prostaglandin E Synthase-1; Glutathione S-Transferase 1-Like 1; Glutathione Transferase PTGES; Glutathione Peroxidase PTGES; P53-Induced Gene 12 Protein; MGST1-Like 1; MPGES-1; PGES; Microsomal Prostaglandin E Synthase 1; P53-Induced Apoptosis Protein 12; P53-Induced Gene 12; EC 5.3.99.3; EC 1.11.1.-; EC 2.5.1.18; PP1294; MPGES1; MPGES; PP102

## Background

Gene Name: PTGES

NCBI Gene Entry: [9536](#)

UniProt Entry: [O14684](#)

## Application Information

Molecular Weight: Predicted, 17 kDa; observed, 15 kDa

Clonality: Rabbit monoclonal antibody

Clone ID: 25GB4435

Species Reactivity: Human, mouse, rat

Applications Tested: Western blotting (WB), flow cytometry (FCM)

## Immunogen

A synthesized peptide derived from human Prostaglandin E Synthase

## Isotype

Rabbit IgG

## Storage Buffer

Supplied in PBS (pH 7.4) containing 50% glycerol, and 0.02% sodium azide.

## Storage

Store at -20 °C for one year.

## Recommended Dilutions

Western Blotting (WB): 1:1,000-1:5,000

Flow Cytometry (FCM): 1:2,000

---

### SUPPORT

SUPPORT@GENUINBIOTECH.COM  
TEL: +1-540-855-7041

### ORDERS

SALES@GENUINBIOTECH.COM  
FAX: +1-540-855-7041

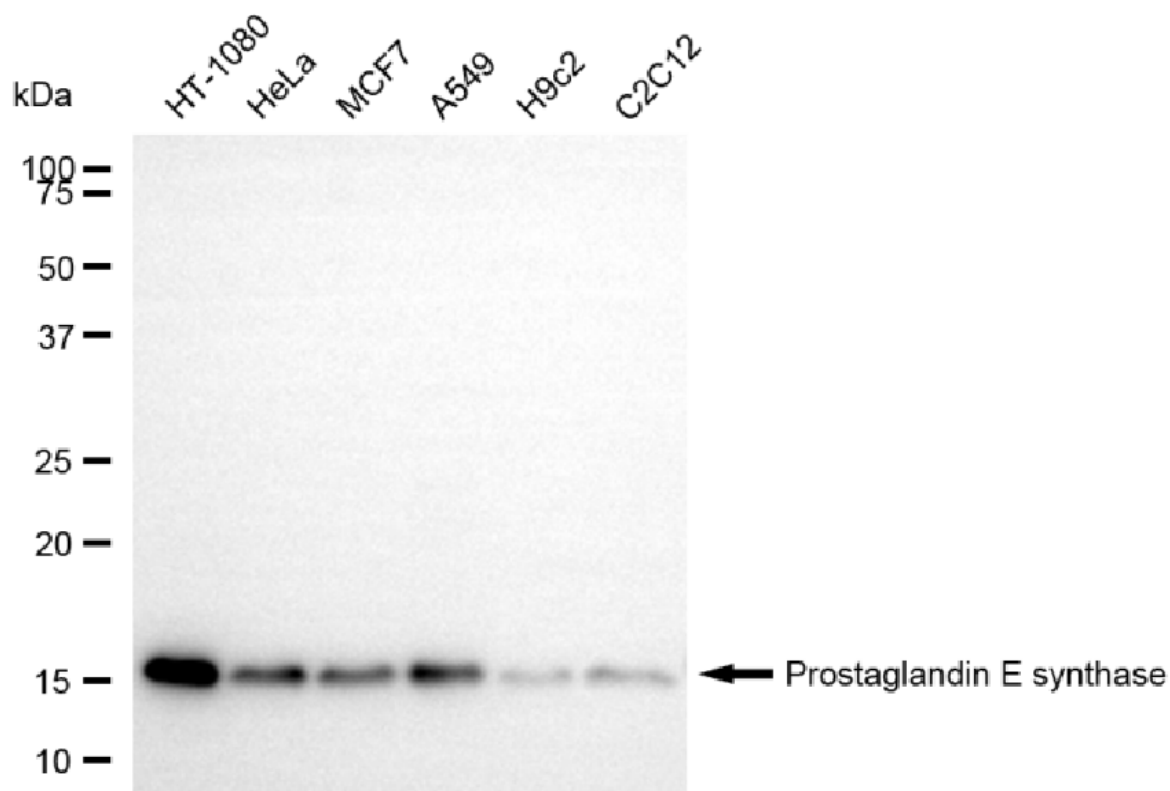
[WWW.GENUINBIOTECH.COM](http://WWW.GENUINBIOTECH.COM)

# Anti-Prostaglandin E Synthase Rabbit Monoclonal Antibody

PAGE 2

**Note:** This product is for research use only.

## Validation Data



Copyright ©2025 Genuin Biotechnologies LLC

Western blotting analysis using anti-prostaglandin E synthase antibody (Cat#5595). Total cell lysates (30 µg) from various cell lines were loaded and separated by SDS-PAGE. The blot was incubated with anti-prostaglandin E synthase antibody (Cat#5595, 1:5,000) and HRP-conjugated goat anti-rabbit secondary antibody (Cat#201, 1:20,000) respectively. Image was developed using NaQ™ ECL Substrate Kit (Cat#716).

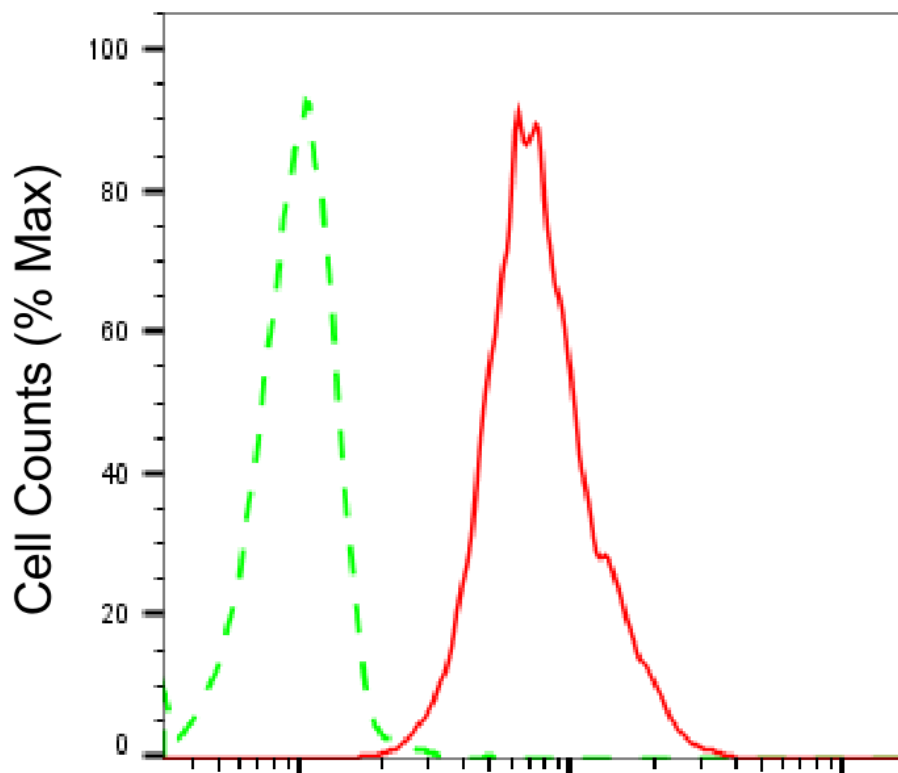
### SUPPORT

SUPPORT@GENUINBIOTECH.COM  
TEL: +1-540-855-7041

### ORDERS

SALES@GENUINBIOTECH.COM  
FAX: +1-540-855-7041

WWW.GENUINBIOTECH.COM



Copyright ©2025 Genuin Biotechnologies LLC

### Prostaglandin E synthase-Alexa Fluor® 647

Flow cytometric analysis of Prostaglandin E synthase expression in HT-1080 cells using anti-Prostaglandin E synthase antibody (Cat#5595, 1:2,000). Green, isotype control; red, Prostaglandin E synthase.