

Catalog #: 5598

Aliases

EXOSC2; Exosome Component 2; RRP4; HRrp4p; Rrp4p; P7; Homolog Of Yeast RRP4 (Ribosomal RNA Processing 4), 3' 5' Exoribonuclease (RRP4); Ribosomal RNA-Processing Protein 4; Exosome Complex Component RRP4; Homolog Of Yeast RRP4 (Ribosomal RNA Processing 4), 3'-5'-Exoribonuclease; Exosome Complex Exonuclease RRP4; SHRF

Background

Gene Name: EXOSC2

NCBI Gene Entry: [23404](#)

UniProt Entry: [Q13868](#)

Application Information

Molecular Weight: Predicted, 33 kDa; observed, 31 kDa

Clonality: Rabbit monoclonal antibody

Clone ID: 25GB4450

Species Reactivity: Human, mouse, rat

Applications Tested: Western blotting (WB), flow cytometry (FCM)

Immunogen

A synthesized peptide derived from human EXOSC2

Isotype

Rabbit IgG

Storage Buffer

Supplied in PBS (pH 7.4) containing 50% glycerol, and 0.02% sodium azide.

Storage

Store at -20 °C for one year.

Recommended Dilutions

Western Blotting (WB): 1:1,000-1:5,000

Note: This product is for research use only.

Validation Data

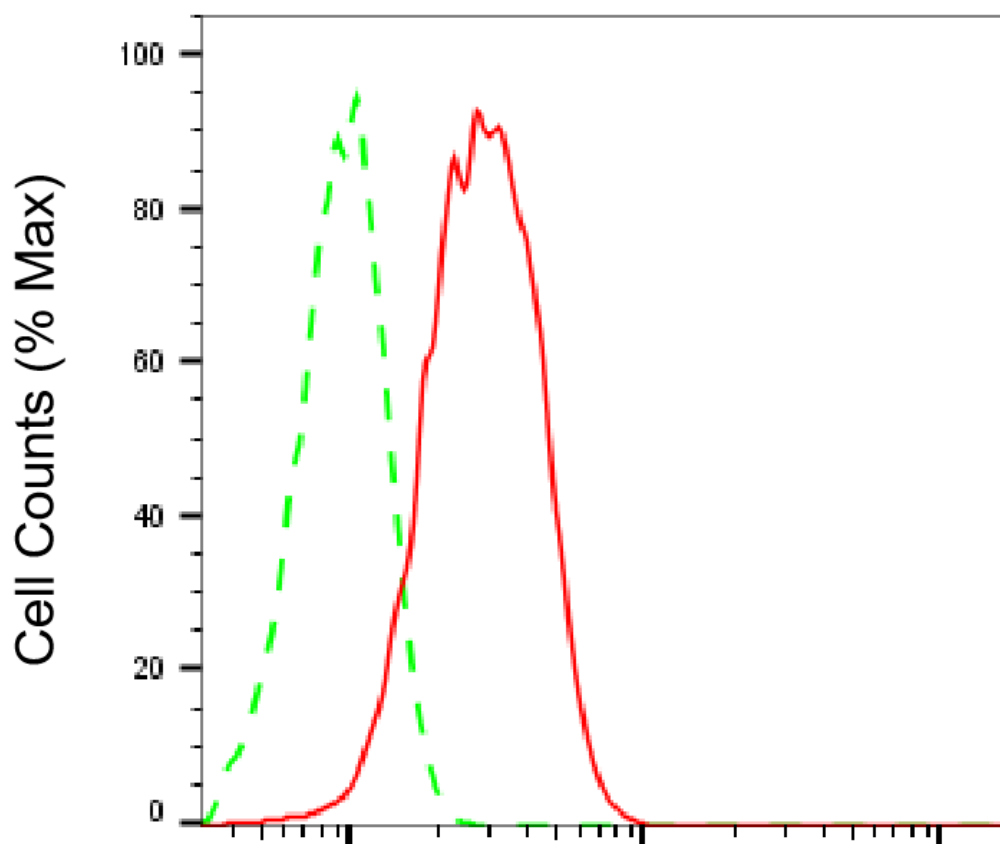
SUPPORT

SUPPORT@GENUINBIOTECH.COM
TEL: +1-540-855-7041

ORDERS

SALES@GENUINBIOTECH.COM
FAX: +1-540-855-7041

WWW.GENUINBIOTECH.COM



Copyright ©2025 Genuin Biotechnologies LLC

Exosome component 2-Alexa Fluor® 647

Flow cytometric analysis of Exosome component 2 expression in HepG2 cells using anti-Exosome component 2 antibody (Cat#5598, 1:2,000). Green, isotype control; red, Exosome component 2.

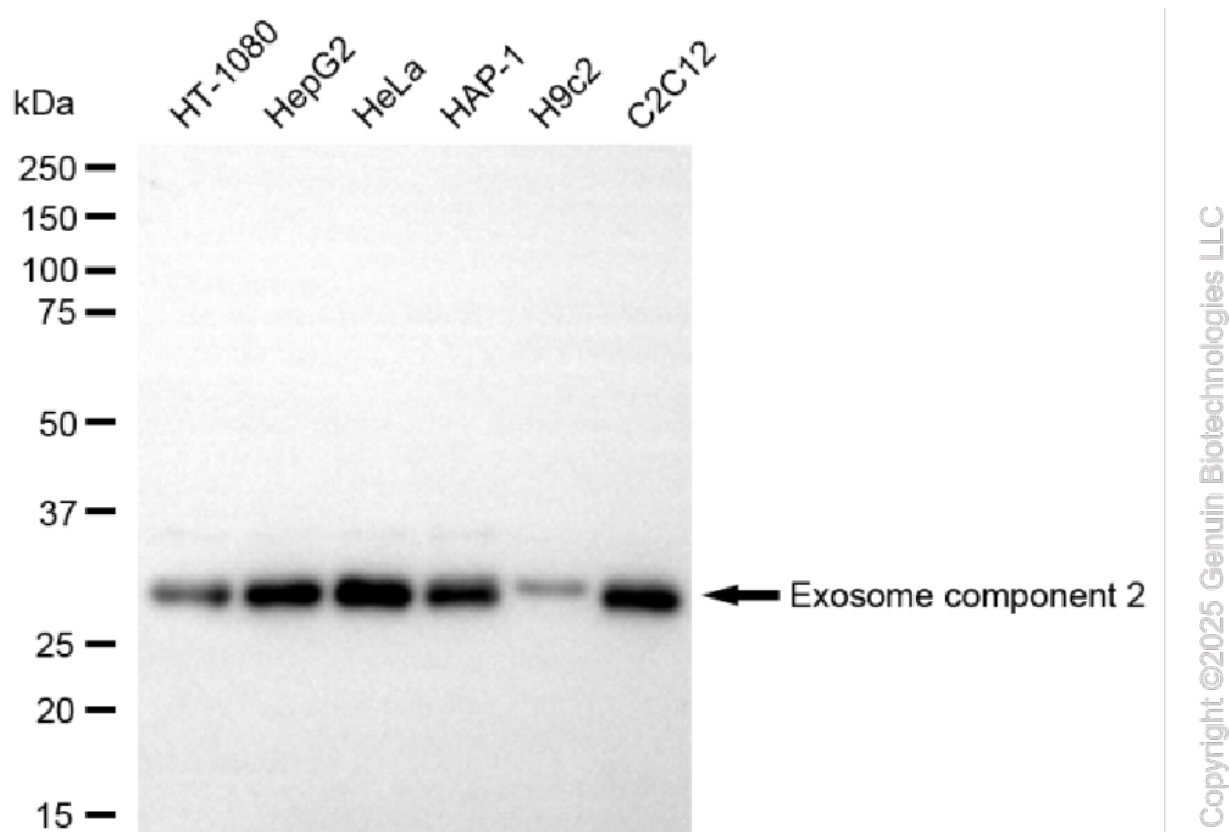
SUPPORT

SUPPORT@GENUINBIOTECH.COM
TEL: +1-540-855-7041

ORDERS

SALES@GENUINBIOTECH.COM
FAX: +1-540-855-7041

WWW.GENUINBIOTECH.COM



Western blotting analysis using anti-exosome component 2 antibody (Cat#5598). Total cell lysates (30 μ g) from various cell lines were loaded and separated by SDS-PAGE. The blot was incubated with anti-exosome component 2 antibody (Cat#5598, 1:5,000) and HRP-conjugated goat anti-rabbit secondary antibody (Cat#201, 1:20,000) respectively. Image was developed using NaQ™ ECL Substrate Kit (Cat#716).