

## Catalog #: 5603

## Aliases

SGSM1; Small G Protein Signaling Modulator 1; KIAA1941; RUTBC2; RUN And TBC1 Domain-Containing Protein 2; RUN And TBC1 Domain Containing 2; Small G Protein Signaling Modulator 1 Protein

## Background

Gene Name: SGSM1

NCBI Gene Entry: [129049](#)

UniProt Entry: [Q2NKQ1](#)

## Application Information

Molecular Weight: Predicted, 130 kDa; observed, 130 kDa

Clonality: Rabbit monoclonal antibody

Clone ID: 25GB4475

Species Reactivity: Human, rat

Applications Tested: Western blotting (WB)

## Immunogen

A synthesized peptide derived from human SGSM1

## Isotype

Rabbit IgG

## Storage Buffer

Supplied in PBS (pH 7.4) containing 50% glycerol, and 0.02% sodium azide.

## Storage

Store at -20 °C for one year.

## Recommended Dilutions

Western Blotting (WB): 1:1,000-1:5,000

**Note:** This product is for research use only.

## Validation Data

---

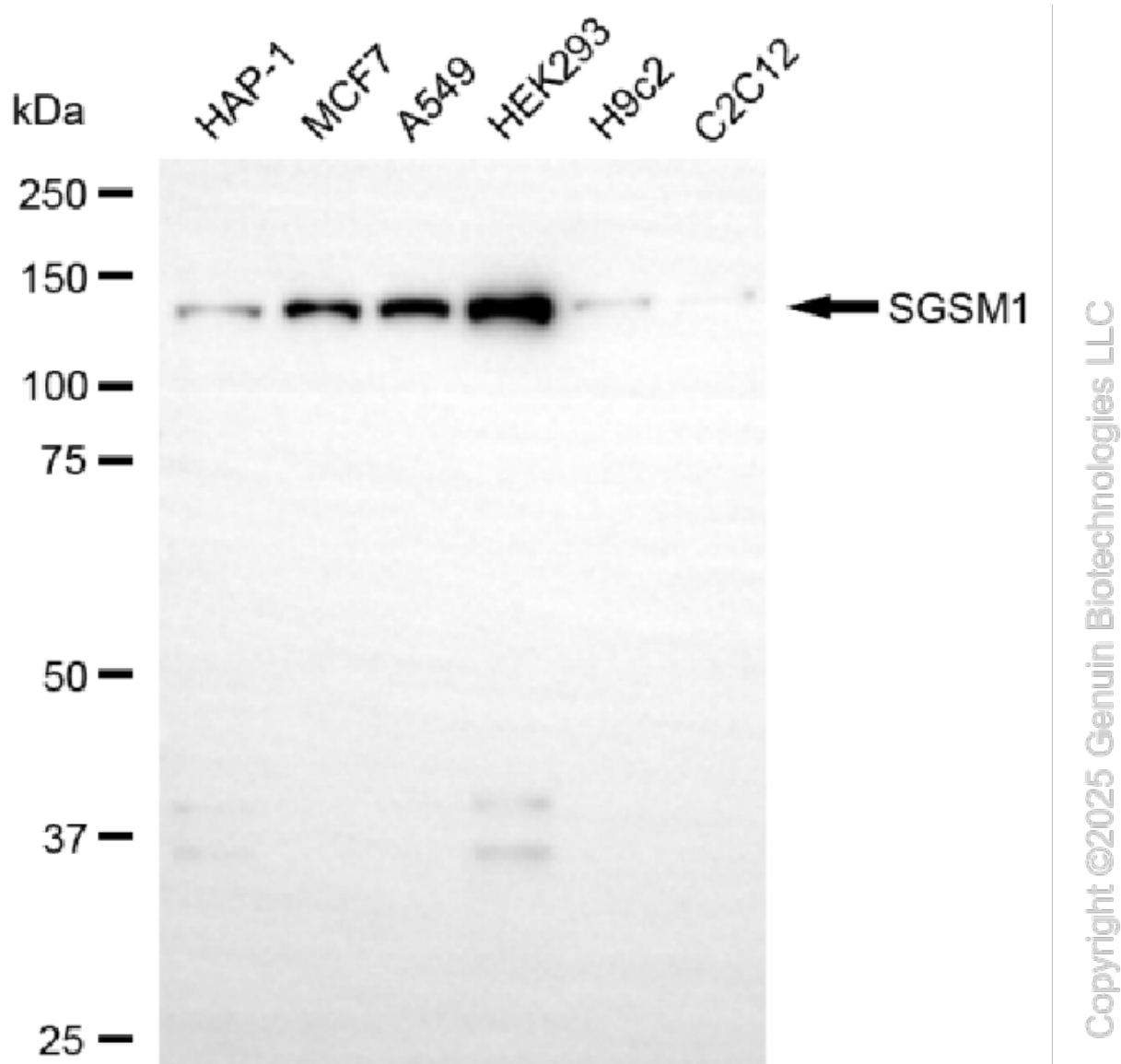
### SUPPORT

SUPPORT@GENUINBIOTECH.COM  
TEL: +1-540-855-7041

### ORDERS

SALES@GENUINBIOTECH.COM  
FAX: +1-540-855-7041

[WWW.GENUINBIOTECH.COM](http://WWW.GENUINBIOTECH.COM)



Western blotting analysis using anti-SGSM1 antibody (Cat#5603). Total cell lysates (30  $\mu$ g) from various cell lines were loaded and separated by SDS-PAGE. The blot was incubated with anti-SGSM1 antibody (Cat#5603, 1:5,000) and HRP-conjugated goat anti-rabbit secondary antibody (Cat#201, 1:20,000) respectively. Image was developed using NaQ™ ECL Substrate Kit (Cat#716).