

Catalog #: 5614

Aliases

TIAM2; TIAM Rac1 Associated GEF 2; STEF; T-Lymphoma Invasion And Metastasis-Inducing Protein 2; Rho Guanine Nucleotide Exchange Factor TIAM2; Sif And Tiam1-Like Exchange Factor; TIAM-2; T-Cell Lymphoma Invasion And Metastasis 2; T Cell Lymphoma Invasion And Metastasis 2; SIF And TIAM1-Like Exchange Factor; KIAA2016

Background

Gene Name: TIAM2

NCBI Gene Entry: [26230](#)

UniProt Entry: [Q8IVF5](#)

Application Information

Molecular Weight: Predicted, 190 kDa; observed, 210 kDa

Clonality: Rabbit monoclonal antibody

Clone ID: 25GB4525

Species Reactivity: Human, mouse, rat

Applications Tested: Western blotting (WB), immunocytochemistry (IC), flow cytometry (FCM)

Immunogen

Recombinant protein of human TIAM2

Isotype

Rabbit IgG

Storage Buffer

Supplied in PBS (pH 7.4) containing 50% glycerol, and 0.02% sodium azide.

Storage

Store at -20 °C for one year.

Recommended Dilutions

Western Blotting (WB): 1:1,000-1:5,000

Immunocytochemistry (IC): 1:100-1:1,000

Flow Cytometry (FCM): 1:2,000

SUPPORT

SUPPORT@GENUINBIOTECH.COM
TEL: +1-540-855-7041

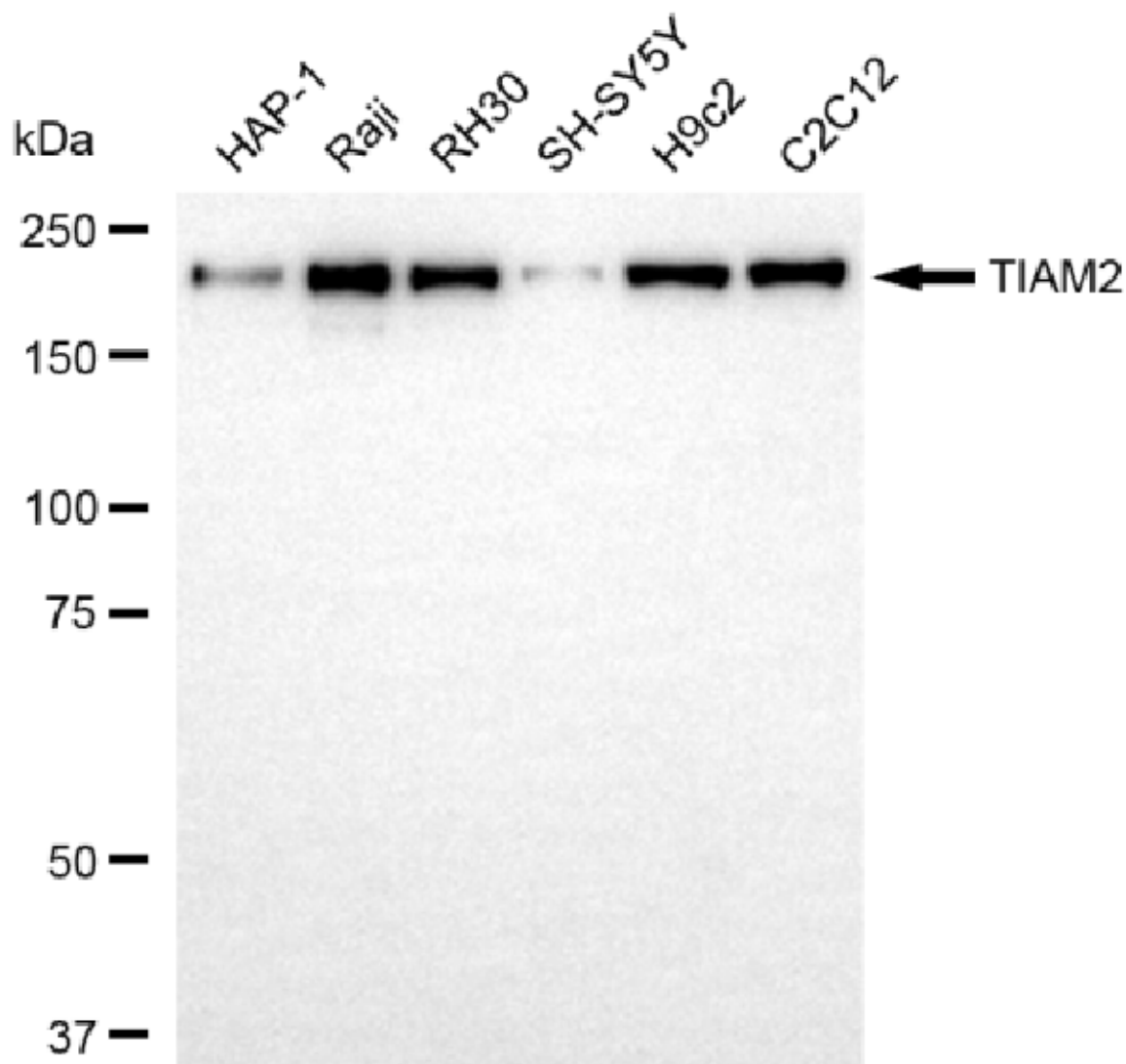
ORDERS

SALES@GENUINBIOTECH.COM
FAX: +1-540-855-7041

WWW.GENUINBIOTECH.COM

Note: This product is for research use only.

Validation Data



Copyright ©2025 Genuin Biotechnologies LLC

Western blotting analysis using anti-TIAM2 antibody (Cat#5614). Total cell lysates (30 µg) from various cell lines were loaded and separated by SDS-PAGE. The blot was incubated with anti-TIAM2 antibody (Cat#5614, 1:5,000) and HRP-conjugated goat anti-rabbit secondary antibody (Cat#201, 1:20,000) respectively. Image was developed using NaQ™ ECL Substrate Kit (Cat#716).

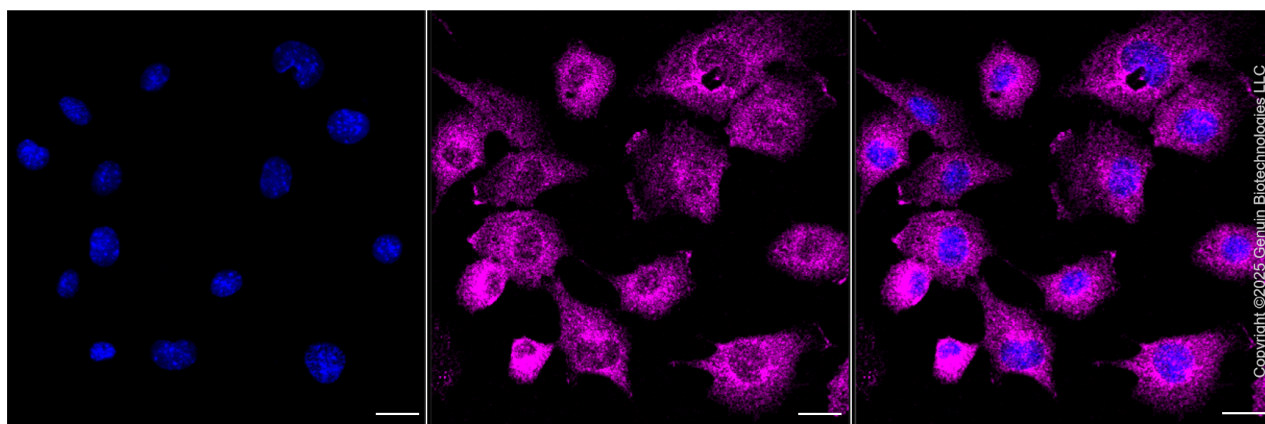
SUPPORT

SUPPORT@GENUINBIOTECH.COM
TEL: +1-540-855-7041

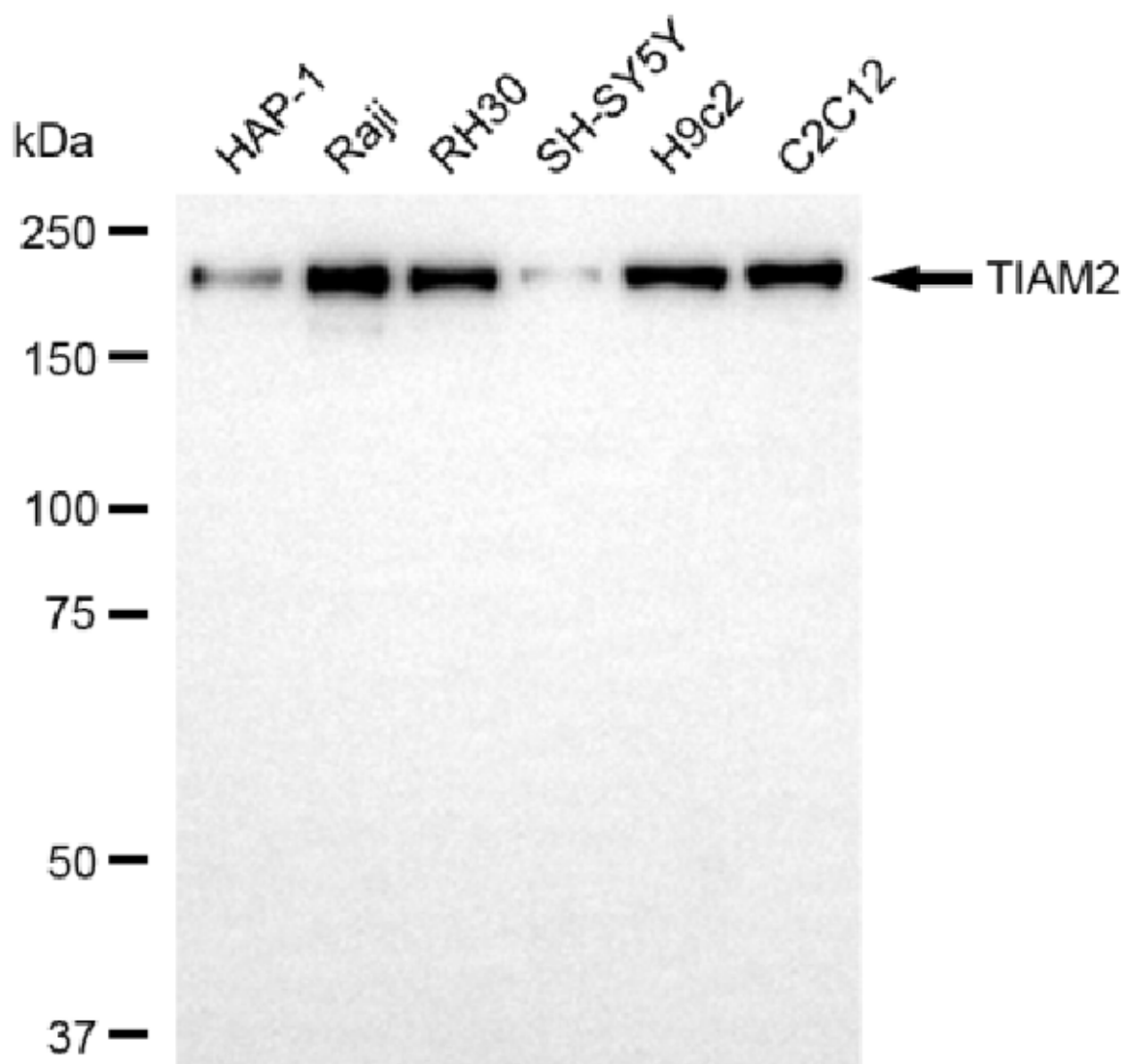
ORDERS

SALES@GENUINBIOTECH.COM
FAX: +1-540-855-7041

WWW.GENUINBIOTECH.COM



Immunocytochemical staining of C2C12 cells with anti-TIAM2 antibody (Cat#5614, 1:1,000) . Nuclei were stained blue with DAPI; TIAM2 was stained magenta with Alexa Fluor® 647. Images were taken using Leica stellaris 5. Protein abundance based on laser Intensity and smart gain: Medium. Scale bar, 20 μ m.

**SUPPORT**

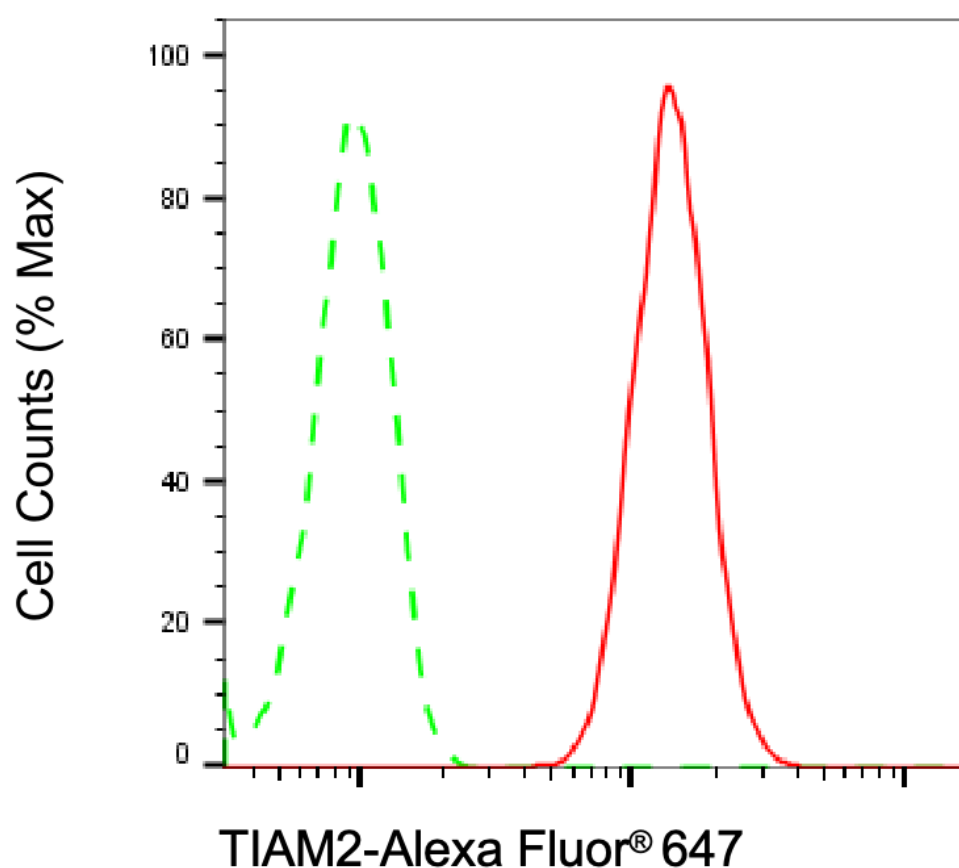
SUPPORT@GENUINBIOTECH.COM
TEL: +1-540-855-7041

ORDERS

SALES@GENUINBIOTECH.COM
FAX: +1-540-855-7041

WWW.GENUINBIOTECH.COM

Western blotting analysis using anti-TIAM2 antibody (Cat#5614). Total cell lysates (30 µg) from various cell lines were loaded and separated by SDS-PAGE. The blot was incubated with anti-TIAM2 antibody (Cat#5614, 1:5,000) and HRP-conjugated goat anti-rabbit secondary antibody (Cat#201, 1:20,000) respectively. Image was developed using NaQ™ ECL Substrate Kit (Cat#716).



Copyright ©2025 Genuin Biotechnologies LLC

Flow cytometric analysis of TIAM2 expression in C2C12 cells using anti-TIAM2 antibody (Cat#5614, 1:2,000). Green, isotype control; red, TIAM2.