

# Anti-Transmembrane Protein 161B Rabbit Monoclonal Antibody



**Catalog #: 5615**

## Aliases

TMEM161B; Transmembrane Protein 161B; MGC33214; FLB3342; PRO1313

## Background

Gene Name: TMEM161B

NCBI Gene Entry: [153396](#)

UniProt Entry: [Q8NDZ6](#)

## Application Information

Molecular Weight: Predicted, 55 kDa; observed, 50 kDa

Clonality: Rabbit monoclonal antibody

Clone ID: 25GB4530

Species Reactivity: Human

Applications Tested: Western blotting (WB), flow cytometry (FCM), immunocytochemistry (IC)

## Immunogen

Recombinant protein of human TMEM161B

## Isotype

Rabbit IgG

## Storage Buffer

Supplied in PBS (pH 7.4) containing 50% glycerol, and 0.02% sodium azide.

## Storage

Store at -20 °C for one year.

## Recommended Dilutions

Western Blotting (WB): 1:1,000-1:5,000

Flow Cytometry (FCM): 1:2,000

Immunocytochemistry (IC): 1:100-1:1,000

**Note:** This product is for research use only.

## Validation Data

---

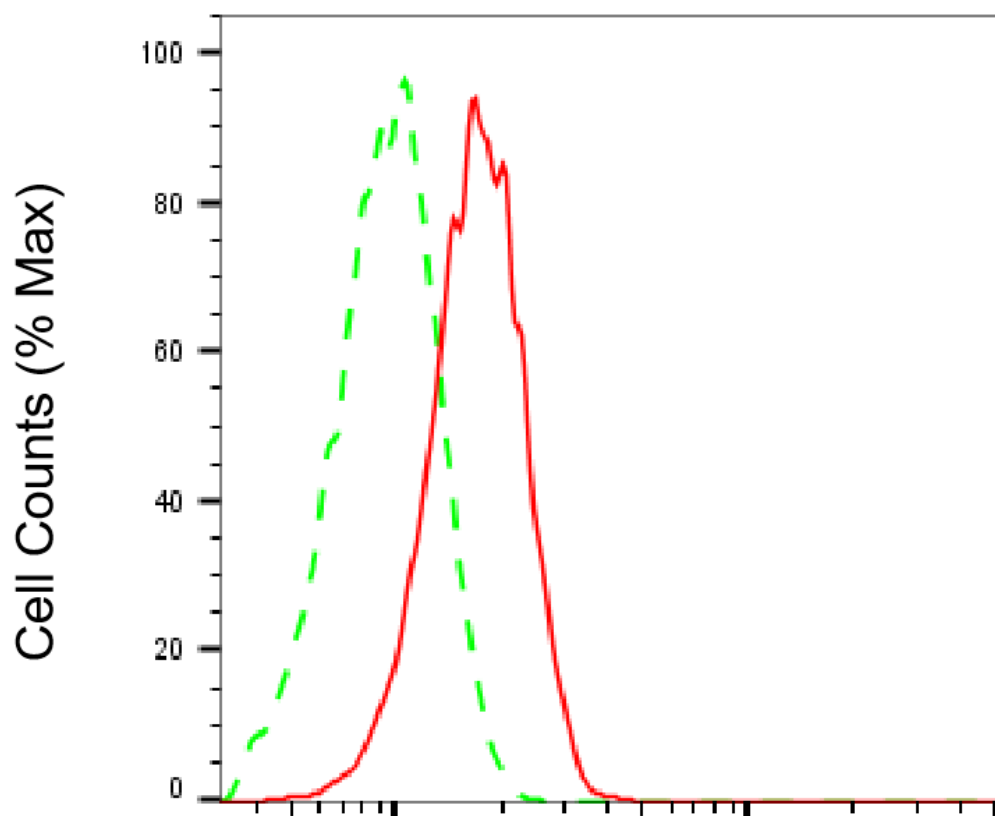
### SUPPORT

SUPPORT@GENUINBIOTECH.COM  
TEL: +1-540-855-7041

### ORDERS

SALES@GENUINBIOTECH.COM  
FAX: +1-540-855-7041

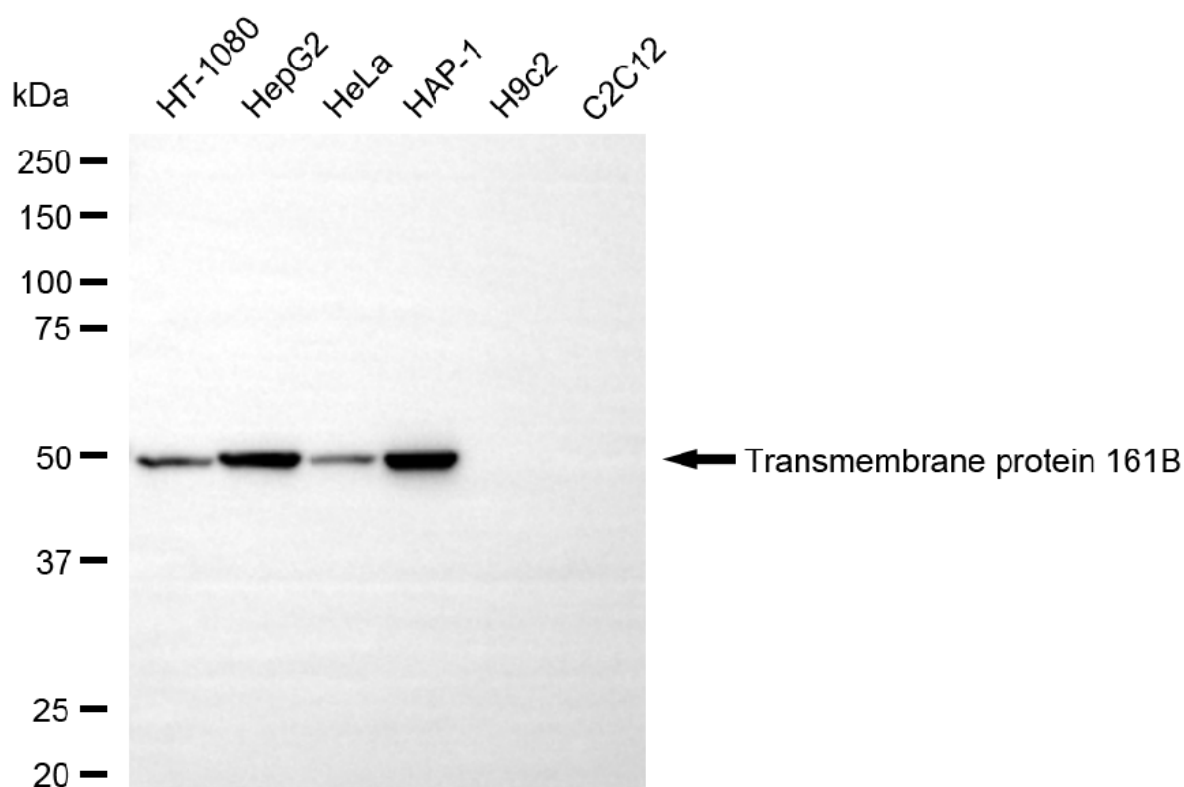
[WWW.GENUINBIOTECH.COM](http://WWW.GENUINBIOTECH.COM)



Copyright ©2025 Genuin Biotechnologies LLC

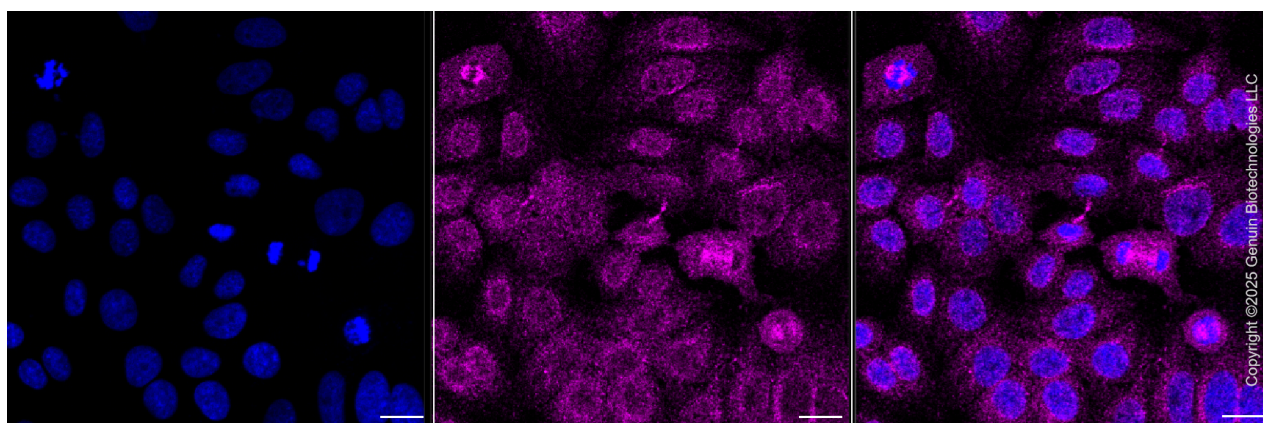
## Transmembrane protein 161B-Alexa Fluor® 647

Flow cytometric analysis of Transmembrane protein 161B expression in HepG2 cells using anti-Transmembrane protein 161B antibody (Cat#5615, 1:2,000). Green, isotype control; red, Transmembrane protein 161B.



Copyright ©2025 Genuin Biotechnologies LLC

Western blotting analysis using anti-transmembrane protein 161B antibody (Cat#5615). Total cell lysates (30 µg) from various cell lines were loaded and separated by SDS-PAGE. The blot was incubated with anti-transmembrane protein 161B antibody (Cat#5615, 1:5,000) and HRP-conjugated goat anti-rabbit secondary antibody (Cat#201, 1:20,000) respectively. Image was developed using NaQ™ ECL Substrate Kit (Cat#716).



Copyright ©2025 Genuin Biotechnologies LLC

Immunocytochemical staining of HepG2 cells with anti-Transmembrane protein 161B antibody (Cat#5615, 1:1,000). Nuclei were stained blue with DAPI; Transmembrane protein 161B was stained magenta with Alexa Fluor® 647. Images were taken using Leica stellaris 5. Protein abundance based on laser Intensity and smart gain: Medium. Scale bar, 20 µm.