

Catalog #: 5620

Aliases

TRUB2; TruB Pseudouridine Synthase Family Member 2; CLONE24922; TruB Pseudouridine (Psi) Synthase Family Member 2; Pseudouridylate Synthase TRUB2, Mitochondrial; TruB Pseudouridine Synthase Homolog 2; TRNA Pseudouridine 55 Synthase TRUB2; Psi55 Synthase TRUB2; TruB Pseudouridine (Psi) Synthase Homolog 2 (E. Coli); Mitochondrial MRNA Pseudouridine Synthase TRUB2; TruB Pseudouridine (Psi) Synthase Homolog 2; Probable TRNA Pseudouridine Synthase 2; EC 5.4.99.25; EC 5.4.99.-

Background

Gene Name: TRUB2

NCBI Gene Entry: [26995](#)

UniProt Entry: [O95900](#)

Application Information

Molecular Weight: Predicted, 37 kDa; observed, 35 kDa

Clonality: Rabbit monoclonal antibody

Clone ID: 25GB4555

Species Reactivity: Human

Applications Tested: Western blotting (WB), immunocytochemistry (IC), flow cytometry (FCM)

Immunogen

Recombinant protein of human TRUB2

Isotype

Rabbit IgG

Storage Buffer

Supplied in PBS (pH 7.4) containing 50% glycerol, and 0.02% sodium azide.

Storage

Store at -20 °C for one year.

Recommended Dilutions

Western Blotting (WB): 1:1,000-1:5,000

Flow Cytometry (FCM): 1:2,000

Immunocytochemistry (IC): 1:100-1:1,000

SUPPORT

SUPPORT@GENUINBIOTECH.COM
TEL: +1-540-855-7041

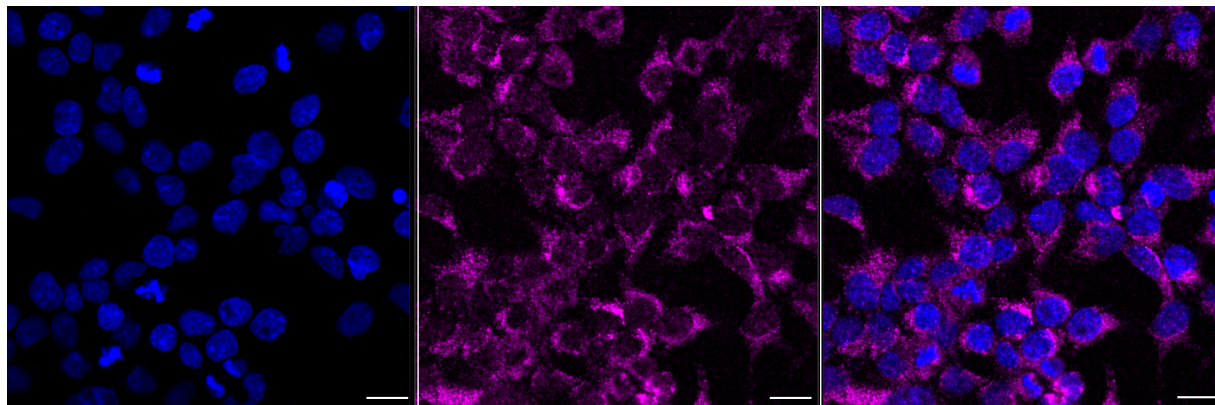
ORDERS

SALES@GENUINBIOTECH.COM
FAX: +1-540-855-7041

WWW.GENUINBIOTECH.COM

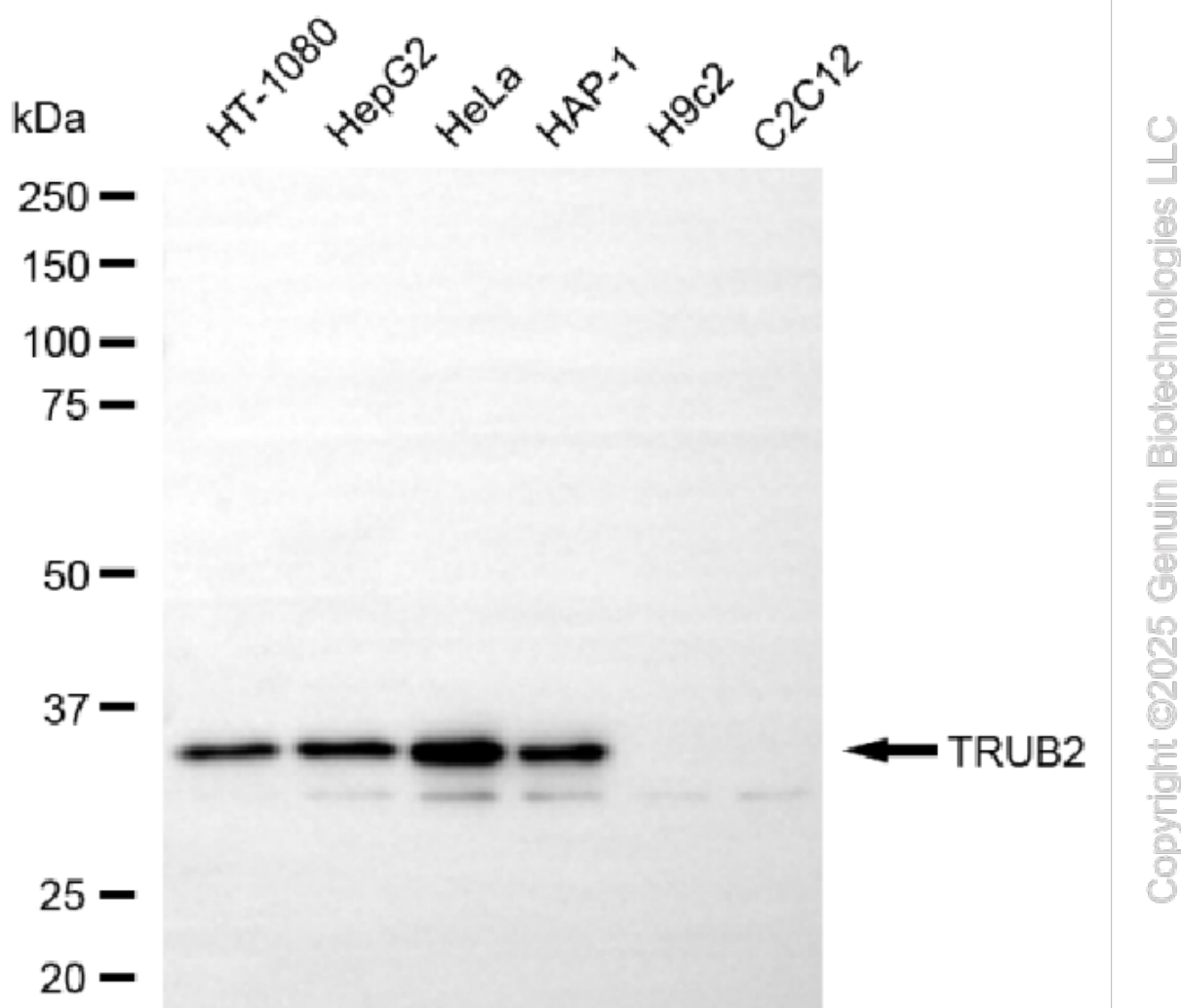
Note: This product is for research use only.

Validation Data



Copyright ©2025 Genuin Biotechnologies LLC

Immunocytochemical staining of HeLa cells with anti-TRUB2 antibody (Cat#5620, 1:1,000) . Nuclei were stained blue with DAPI; TRUB2 was stained magenta with Alexa Fluor® 647. Images were taken using Leica stellaris 5. Protein abundance based on laser Intensity and smart gain: Medium. Scale bar, 20 μ m.



Western blotting analysis using anti-TRUB2 antibody (Cat#5620). Total cell lysates (30 μ g) from various cell lines were loaded and separated by SDS-PAGE. The blot was incubated with anti-TRUB2 antibody (Cat#5620, 1:5,000) and HRP-conjugated goat anti-rabbit secondary antibody (Cat#201, 1:20,000) respectively. Image was developed using NaQ™ ECL Substrate Kit (Cat#716).

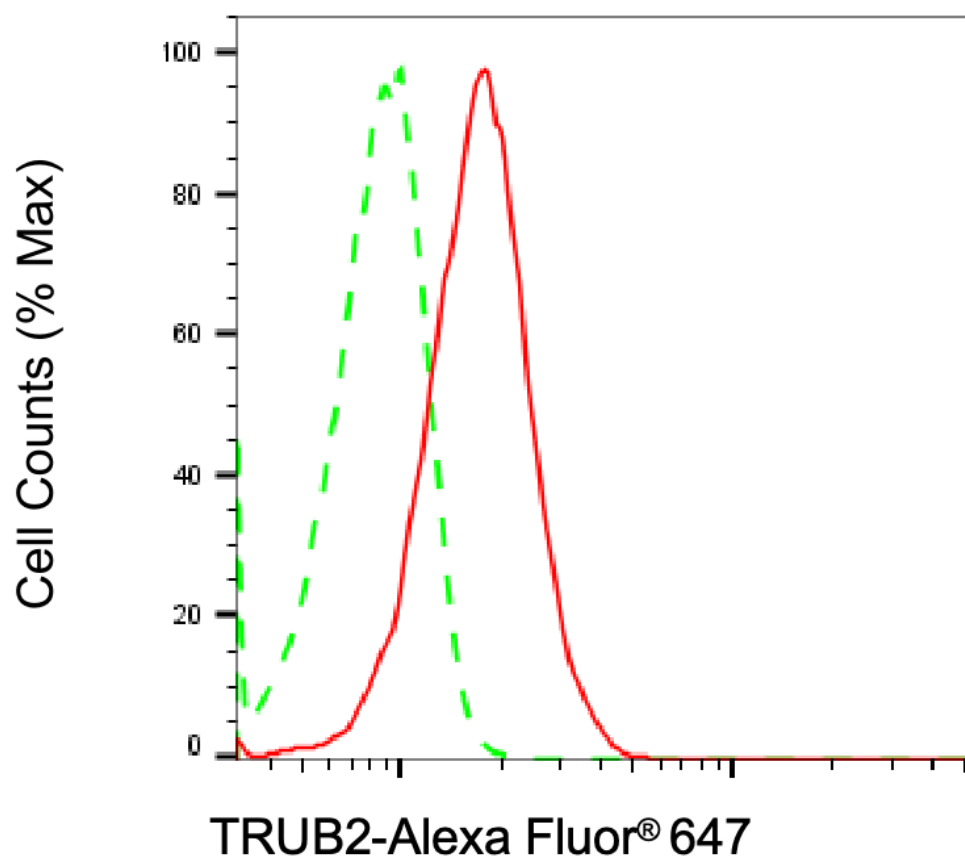
SUPPORT

SUPPORT@GENUINBIOTECH.COM
TEL: +1-540-855-7041

ORDERS

SALES@GENUINBIOTECH.COM
FAX: +1-540-855-7041

WWW.GENUINBIOTECH.COM



Copyright ©2025 Genuin Biotechnologies LLC

Flow cytometric analysis of TRUB2 expression in HeLa cells using anti-TRUB2 antibody (Cat#5620, 1:2,000). Green, isotype control; red, TRUB2.