

## Catalog #: 5626

## Aliases

ULK3; Unc-51 Like Kinase 3; Serine/Threonine-Protein Kinase ULK3; DKFZP434C131; FLJ90566; Unc-51-Like Kinase 3 (C. Elegans); Unc-51-Like Kinase 3; EC 2.7.11.1

## Background

Gene Name: ULK3

NCBI Gene Entry: [25989](#)

UniProt Entry: [Q6PHR2](#)

## Application Information

Molecular Weight: Predicted, 53 kDa; observed, 46 kDa

Clonality: Rabbit monoclonal antibody

Clone ID: 25GB4585

Species Reactivity: Human

Applications Tested: Western blotting (WB), flow cytometry (FCM)

## Immunogen

A synthesized peptide derived from human ULK3

## Isotype

Rabbit IgG

## Storage Buffer

Supplied in PBS (pH 7.4) containing 50% glycerol, and 0.02% sodium azide.

## Storage

Store at -20 °C for one year.

## Recommended Dilutions

Western Blotting (WB): 1:1,000-1:5,000

Flow Cytometry (FCM): 1:2,000

**Note:** This product is for research use only.

## Validation Data

---

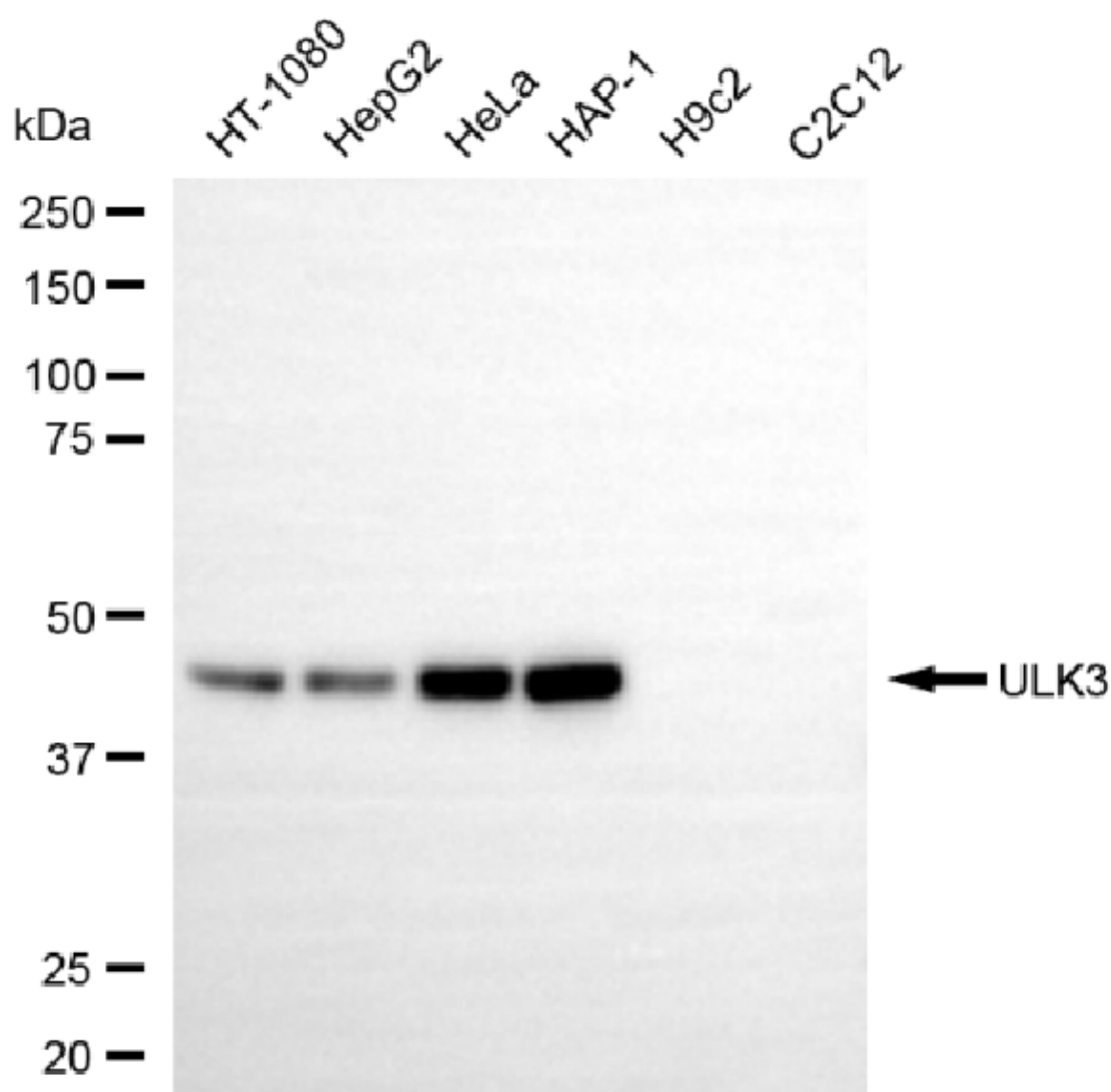
### SUPPORT

SUPPORT@GENUINBIOTECH.COM  
TEL: +1-540-855-7041

### ORDERS

SALES@GENUINBIOTECH.COM  
FAX: +1-540-855-7041

[WWW.GENUINBIOTECH.COM](http://WWW.GENUINBIOTECH.COM)



Copyright ©2025 Genuin Biotechnologies LLC

Western blotting analysis using anti-ULK3 antibody (Cat#5626). Total cell lysates (30 µg) from various cell lines were loaded and separated by SDS-PAGE. The blot was incubated with anti-ULK3 antibody (Cat#5626, 1:5,000) and HRP-conjugated goat anti-rabbit secondary antibody (Cat#201, 1:20,000) respectively. Image was developed using NaQ™ ECL Substrate Kit (Cat#716).

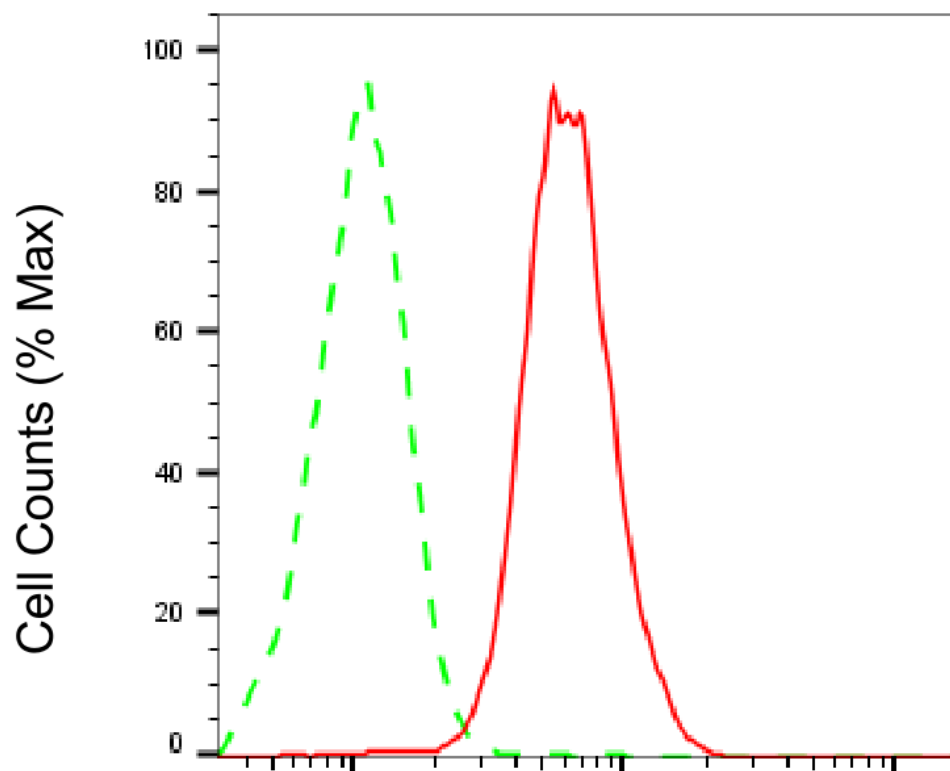
**SUPPORT**

SUPPORT@GENUINBIOTECH.COM  
TEL: +1-540-855-7041

**ORDERS**

SALES@GENUINBIOTECH.COM  
FAX: +1-540-855-7041

**WWW.GENUINBIOTECH.COM**



Copyright ©2025 Genuin Biotechnologies LLC

### ULK3-Alexa Fluor® 647

Flow cytometric analysis of ULK3 expression in HAP-1 cells using anti-ULK3 antibody (Cat#5626, 1:2,000). Green, isotype control; red, ULK3.

---

**SUPPORT**

SUPPORT@GENUINBIOTECH.COM  
TEL: +1-540-855-7041

**ORDERS**

SALES@GENUINBIOTECH.COM  
FAX: +1-540-855-7041

**WWW.GENUINBIOTECH.COM**