

## Catalog #: 5627

### Aliases

VIL1; Villin 1; D2S1471; VIL; Villin-1

### Background

Gene Name: VIL1

NCBI Gene Entry: [7429](#)

UniProt Entry: [P09327](#)

### Application Information

Molecular Weight: Predicted, 93 kDa; observed, 85 kDa

Clonality: Rabbit monoclonal antibody

Clone ID: 25GB4590

Species Reactivity: Human

Applications Tested: Western blotting (WB)

### Immunogen

A synthesized peptide derived from human Villin 1

### Isotype

Rabbit IgG

### Storage Buffer

Supplied in PBS (pH 7.4) containing 50% glycerol, and 0.02% sodium azide.

### Storage

Store at -20 °C for one year.

### Recommended Dilutions

Western Blotting (WB): 1:1,000-1:5,000

**Note:** This product is for research use only.

### Validation Data

---

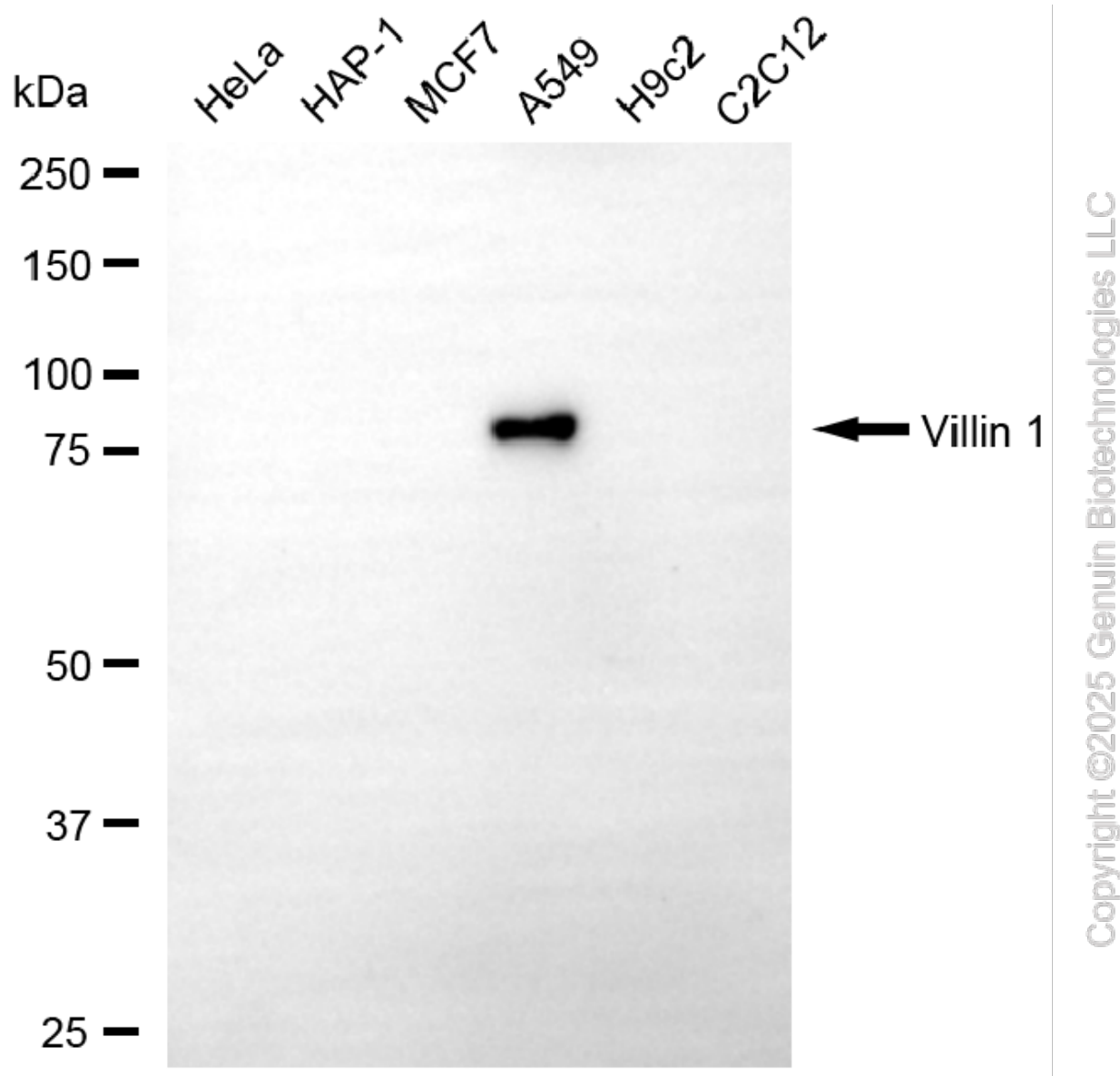
#### SUPPORT

SUPPORT@GENUINBIOTECH.COM  
TEL: +1-540-855-7041

#### ORDERS

SALES@GENUINBIOTECH.COM  
FAX: +1-540-855-7041

[WWW.GENUINBIOTECH.COM](http://WWW.GENUINBIOTECH.COM)



Western blotting analysis using anti-villin 1 antibody (Cat#5627). Total cell lysates (30  $\mu$ g) from various cell lines were loaded and separated by SDS-PAGE. The blot was incubated with anti-villin 1 antibody (Cat#5627, 1:5,000) and HRP-conjugated goat anti-rabbit secondary antibody (Cat#201, 1:20,000) respectively. Image was developed using FeQ™ ECL Substrate Kit (Cat#226).

**SUPPORT**

SUPPORT@GENUINBIOTECH.COM  
TEL: +1-540-855-7041

**ORDERS**

SALES@GENUINBIOTECH.COM  
FAX: +1-540-855-7041

[WWW.GENUINBIOTECH.COM](http://WWW.GENUINBIOTECH.COM)