

Catalog #: 5630

Aliases

WASF1; WASP Family Member 1; WAVE1; SCAR1; KIAA0269; WAVE; Wiskott-Aldrich Syndrome Protein Family Member 1; Verprolin Homology Domain-Containing Protein 1; WASP Family Protein Member 1; WAS Protein Family Member 1; Actin-Binding Protein WASF1; Protein WAVE-1; Homology Of Dictyostelium Scar 1; WAS Protein Family, Member 1; NEDALVS

Background

Gene Name: WASF1

NCBI Gene Entry: [8936](#)

UniProt Entry: [Q92558](#)

Application Information

Molecular Weight: Predicted, 62 kDa; observed, 80 kDa

Clonality: Rabbit monoclonal antibody

Clone ID: 25GB4605

Species Reactivity: Human, mouse, rat

Applications Tested: Western blotting (WB), immunocytochemistry (IC), flow cytometry (FCM)

Immunogen

Recombinant protein of human WASF1

Isotype

Rabbit IgG

Storage Buffer

Supplied in PBS (pH 7.4) containing 50% glycerol, and 0.02% sodium azide.

Storage

Store at -20 °C for one year.

Recommended Dilutions

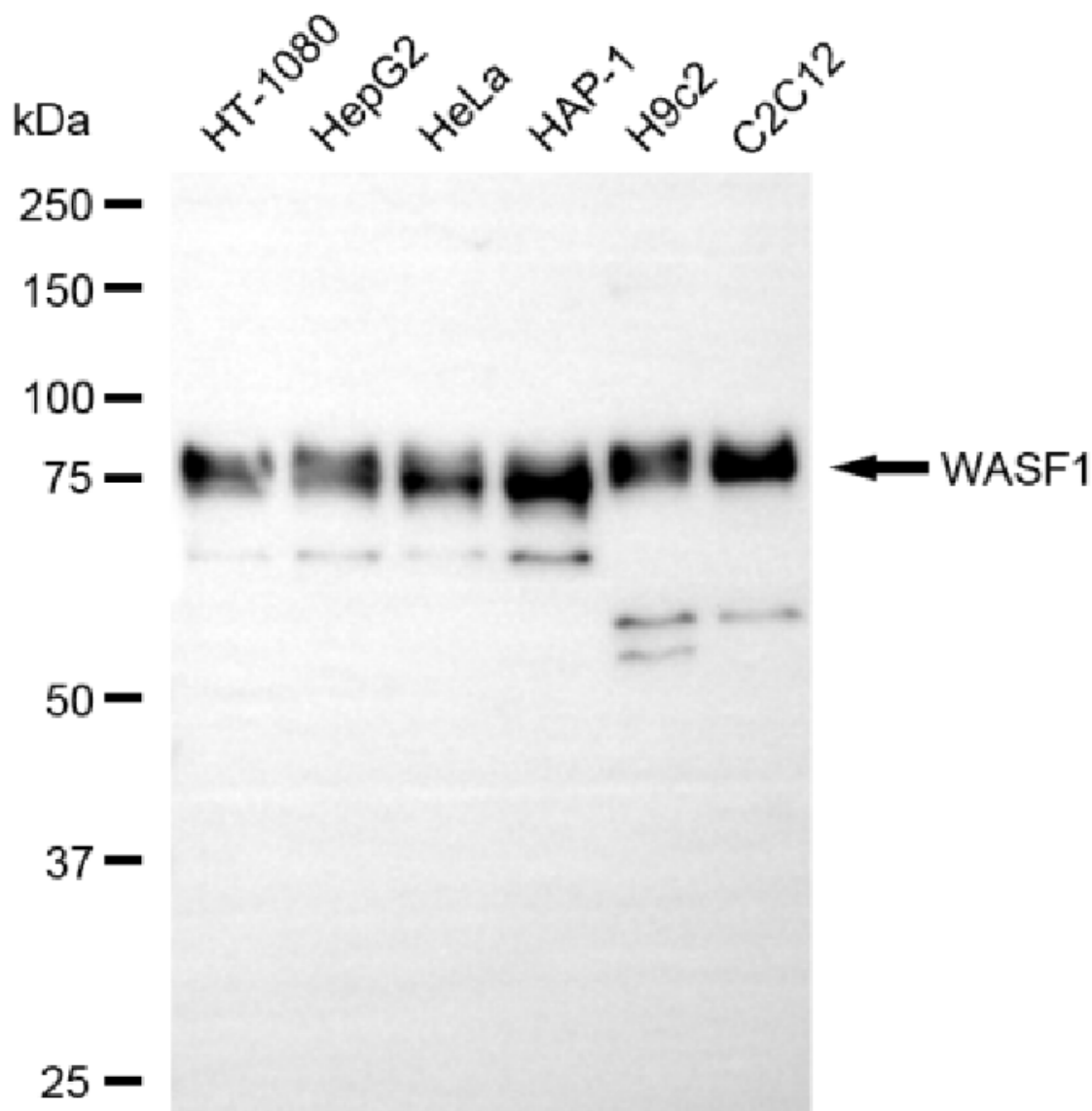
Western Blotting (WB): 1:1,000-1:5,000

Immunocytochemistry (IC): 1:100-1:1,000

Flow Cytometry (FCM): 1:2,000

Note: This product is for research use only.

Validation Data



Copyright ©2025 Genuin Biotechnologies LLC

Western blotting analysis using anti-WASF1 antibody (Cat#5630). Total cell lysates (30 µg) from various cell lines were loaded and separated by SDS-PAGE. The blot was incubated with anti-WASF1 antibody (Cat#5630, 1:5,000) and HRP-conjugated goat anti-rabbit secondary antibody (Cat#201, 1:20,000) respectively. Image was developed using NaQ™ ECL Substrate Kit (Cat#716).

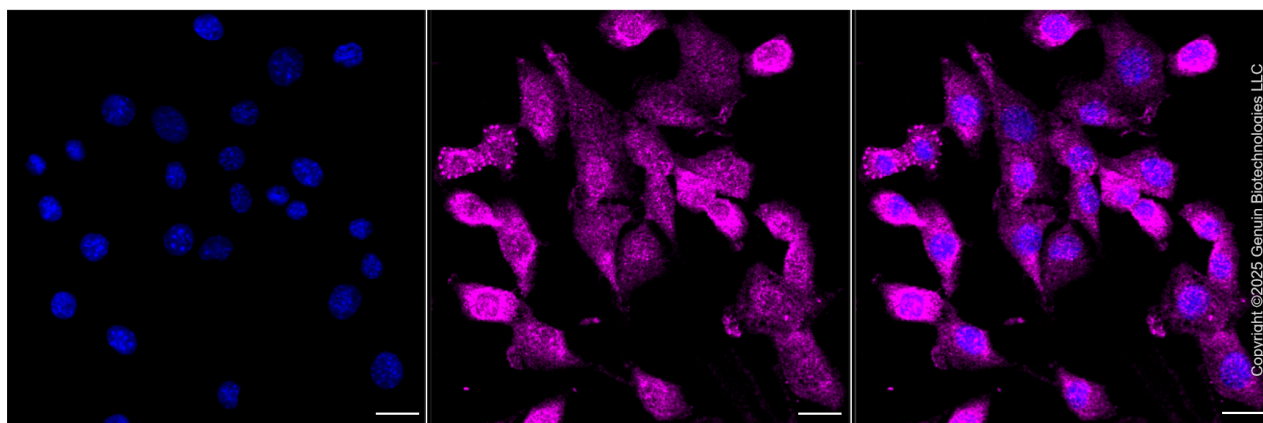
SUPPORT

SUPPORT@GENUINBIOTECH.COM
TEL: +1-540-855-7041

ORDERS

SALES@GENUINBIOTECH.COM
FAX: +1-540-855-7041

WWW.GENUINBIOTECH.COM



Immunocytochemical staining of C2C12 cells with anti- antibody (Cat#5630, 1:1,000) . Nuclei were stained blue with DAPI; was stained magenta with Alexa Fluor® 647. Images were taken using Leica stellaris 5. Protein abundance based on laser Intensity and smart gain: Medium. Scale bar, 20 μ m.

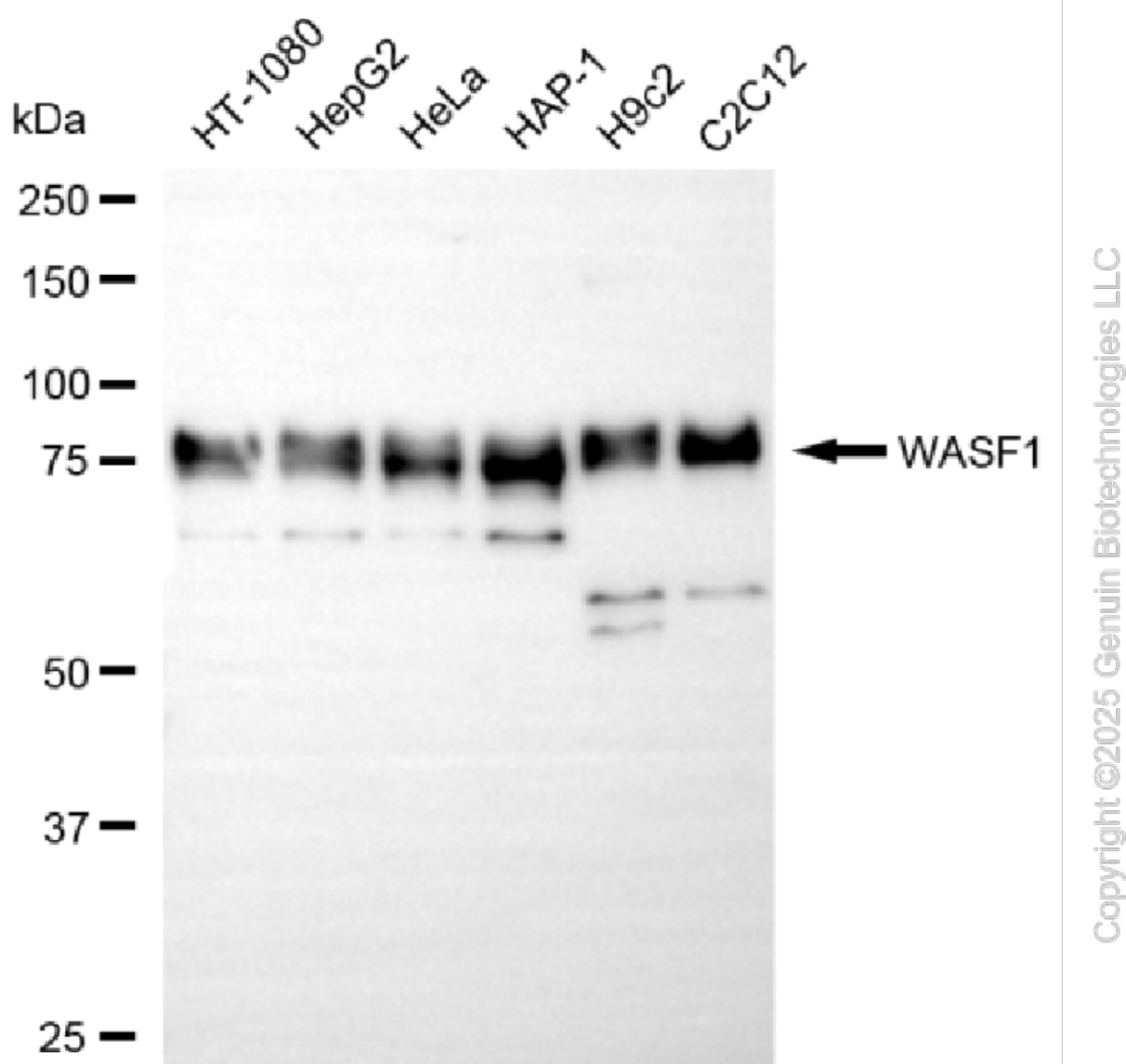
SUPPORT

SUPPORT@GENUINBIOTECH.COM
TEL: +1-540-855-7041

ORDERS

SALES@GENUINBIOTECH.COM
FAX:+1-540-855-7041

WWW.GENUINBIOTECH.COM



Western blotting analysis using anti-WASF1 antibody (Cat#5630). Total cell lysates (30 μ g) from various cell lines were loaded and separated by SDS-PAGE. The blot was incubated with anti-WASF1 antibody (Cat#5630, 1:5,000) and HRP-conjugated goat anti-rabbit secondary antibody (Cat#201, 1:20,000) respectively. Image was developed using NaQ™ ECL Substrate Kit (Cat#716).

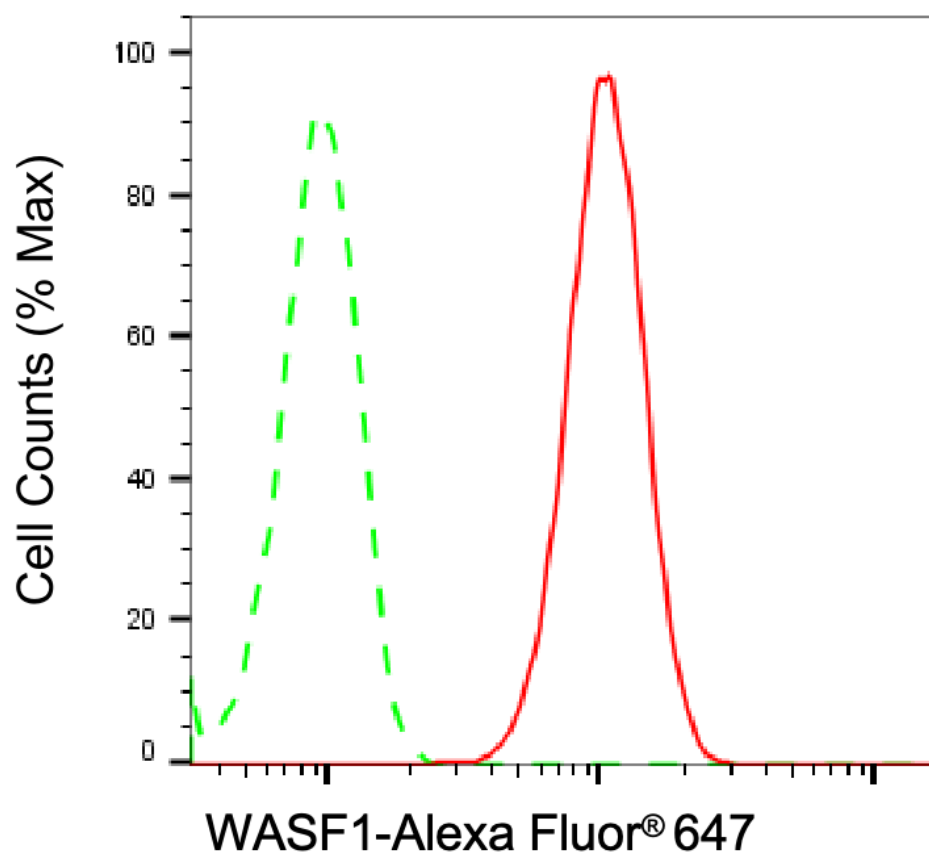
SUPPORT

SUPPORT@GENUINBIOTECH.COM
TEL: +1-540-855-7041

ORDERS

SALES@GENUINBIOTECH.COM
FAX: +1-540-855-7041

WWW.GENUINBIOTECH.COM



Copyright ©2025 Genuin Biotechnologies LLC

Flow cytometric analysis of WASF1 expression in C2C12 cells using anti-WASF1 antibody (Cat#5630, 1:2,000). Green, isotype control; red, WASF1.

SUPPORT

SUPPORT@GENUINBIOTECH.COM
TEL: +1-540-855-7041

ORDERS

SALES@GENUINBIOTECH.COM
FAX: +1-540-855-7041

WWW.GENUINBIOTECH.COM