

Anti-Glucocorticoid Receptor Recombinant Rabbit Monoclonal Antibody



Catalog #: 5631

Aliases

Nuclear Receptor Subfamily 3 Group C Member 1; GR; Glucocorticoid Receptor; GRL; Nuclear Receptor Subfamily 3, Group C, Member 1 (Glucocorticoid Receptor); Nuclear Receptor Subfamily 3 Group C Member 1 Variant HGR-B(54); Nuclear Receptor Subfamily 3 Group C Member 1 Variant HGR-B(77); Nuclear Receptor Subfamily 3 Group C Member 1 Variant HGR-B(93); Nuclear Receptor Subfamily 3, Group C, Member 1; GCRST; GCCR; GCR

Background

Gene Name: NR3C1

NCBI Gene Entry: [2908](#)

UniProt Entry: [P04150](#)

Application Information

Molecular Weight: Predicted, 86 kDa; observed, 86 kDa

Clonality: Rabbit monoclonal antibody

Clone ID: 23GB935

Species Reactivity: Human, mouse, rat

Applications Tested: Western blotting (WB), flow cytometry (FCM), immunocytochemistry (IC)

Immunogen

A synthesized peptide derived from human GR

Isotype

Rabbit IgG

Storage Buffer

Supplied in PBS (pH 7.4) containing 50% glycerol, and 0.02% sodium azide.

Storage

Store at -20 °C for one year.

Recommended Dilutions

Western Blotting (WB): 1:2,000-1:10,000

Flow Cytometry (FCM): 1:2,000

Immunocytochemistry (IC): 1:100-1:1,000

SUPPORT

SUPPORT@GENUINBIOTECH.COM
TEL: +1-540-855-7041

ORDERS

SALES@GENUINBIOTECH.COM
FAX: +1-540-855-7041

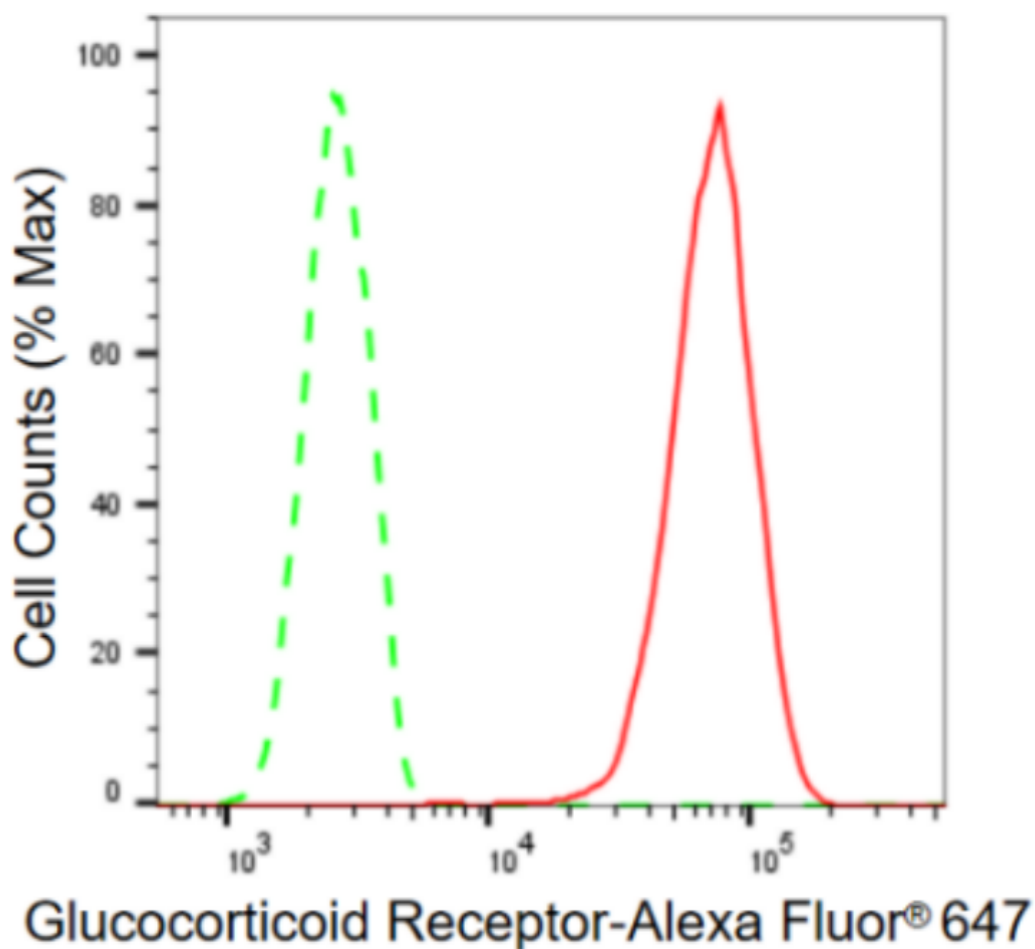
WWW.GENUINBIOTECH.COM

Anti-Glucocorticoid Receptor Recombinant Rabbit Monoclonal Antibody

PAGE 2

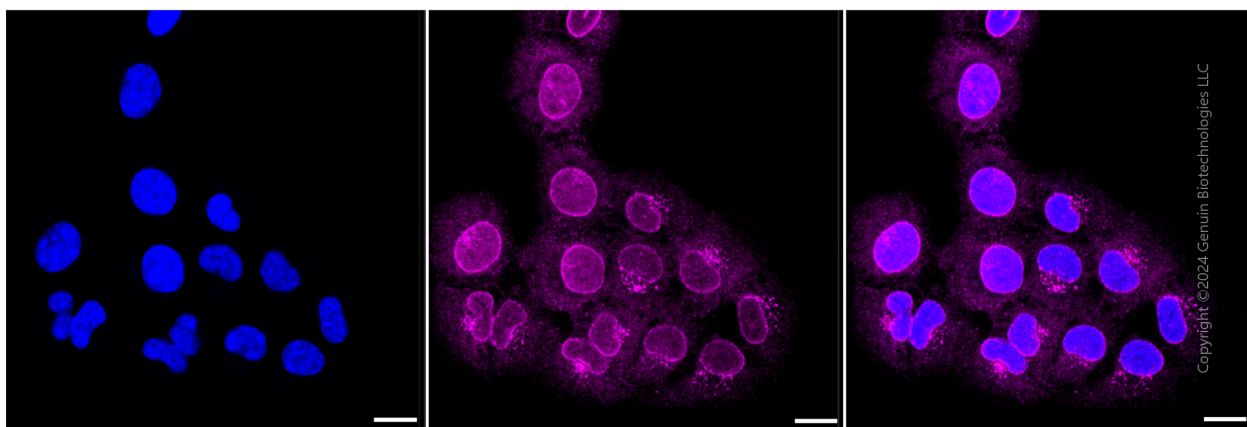
Note: This product is for research use only.

Validation Data



Copyright ©2024 Genuin Biotechnologies LLC

Flow cytometric analysis of Glucocorticoid Receptor expression in HT-1080 cells using Glucocorticoid Receptor antibody (Cat#5631,1:2,000). Green, isotype control; red, Glucocorticoid Receptor.



SUPPORT

SUPPORT@GENUINBIOTECH.COM
TEL: +1-540-855-7041

ORDERS

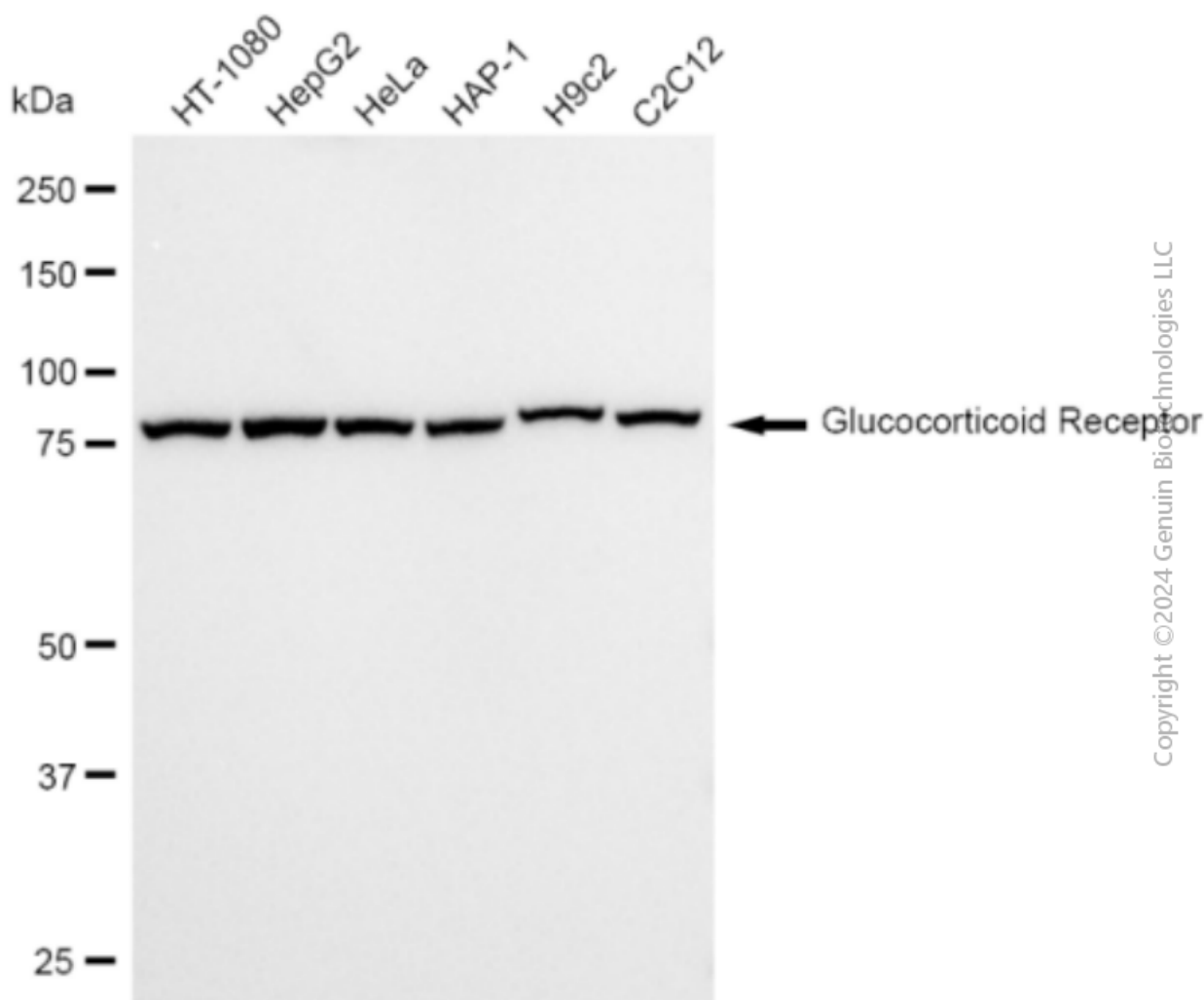
SALES@GENUINBIOTECH.COM
FAX: +1-540-855-7041

WWW.GENUINBIOTECH.COM

Anti-Glucocorticoid Receptor Recombinant Rabbit Monoclonal Antibody

PAGE 3

Immunocytochemical staining of HT-1080 cells with Glucocorticoid Receptor antibody (Cat#5631, 1:1,000). Nuclei were stained blue with DAPI; Glucocorticoid Receptor was stained magenta with Alexa Fluor® 647. Images were taken using Leica stellaris 5. Protein abundance based on laser Intensity and smart gain: Medium. Scale bar: 20 μ m.



Copyright ©2024 Genuin Biotechnologies LLC

Western blotting analysis using anti-Glucocorticoid Receptor antibody (Cat#5631). Total cell lysates (30 μ g) from various cell lines were loaded and separated by SDS-PAGE. The blot was incubated with anti-Glucocorticoid Receptor antibody (Cat#5631, 1:10,000) and HRP-conjugated goat anti rabbit secondary antibody (Cat#201, 1:50,000) respectively. Image was developed using FeQ™ ECL Substrate Kit (Cat#MR226).

SUPPORT

SUPPORT@GENUINBIOTECH.COM
TEL: +1-540-855-7041

ORDERS

SALES@GENUINBIOTECH.COM
FAX: +1-540-855-7041

WWW.GENUINBIOTECH.COM