

## Catalog #: 5640

## Aliases

CLIC1; Chloride Intracellular Channel 1; NCC27; G6; P64CLCP; CLCNL1; Glutathione-Dependent Dehydroascorbate Reductase CLIC1; Regulatory Nuclear Chloride Ion Channel Protein; Chloride Intracellular Channel Protein 1; Glutaredoxin-Like Oxidoreductase CLIC1; Nuclear Chloride Ion Channel 27; Chloride Channel ABP; HRNCC; Nuclear Chloride Ion Channel Protein; RNCC Protein; EC 1.8.-.-; EC 1.8.5.1; CL1C1

## Background

Gene Name: CLIC1

NCBI Gene Entry: [1192](#)

UniProt Entry: [O00299](#)

## Application Information

Molecular Weight: Predicted, 27 kDa; observed, 31 kDa

Clonality: Rabbit monoclonal antibody

Clone ID: 25GB4650

Species Reactivity: Human, mouse, rat

Applications Tested: Western blotting (WB), flow cytometry (FCM)

## Immunogen

Recombinant protein of human CLIC1

## Isotype

Rabbit IgG

## Storage Buffer

Supplied in PBS (pH 7.4) containing 50% glycerol, and 0.02% sodium azide.

## Storage

Store at -20 °C for one year.

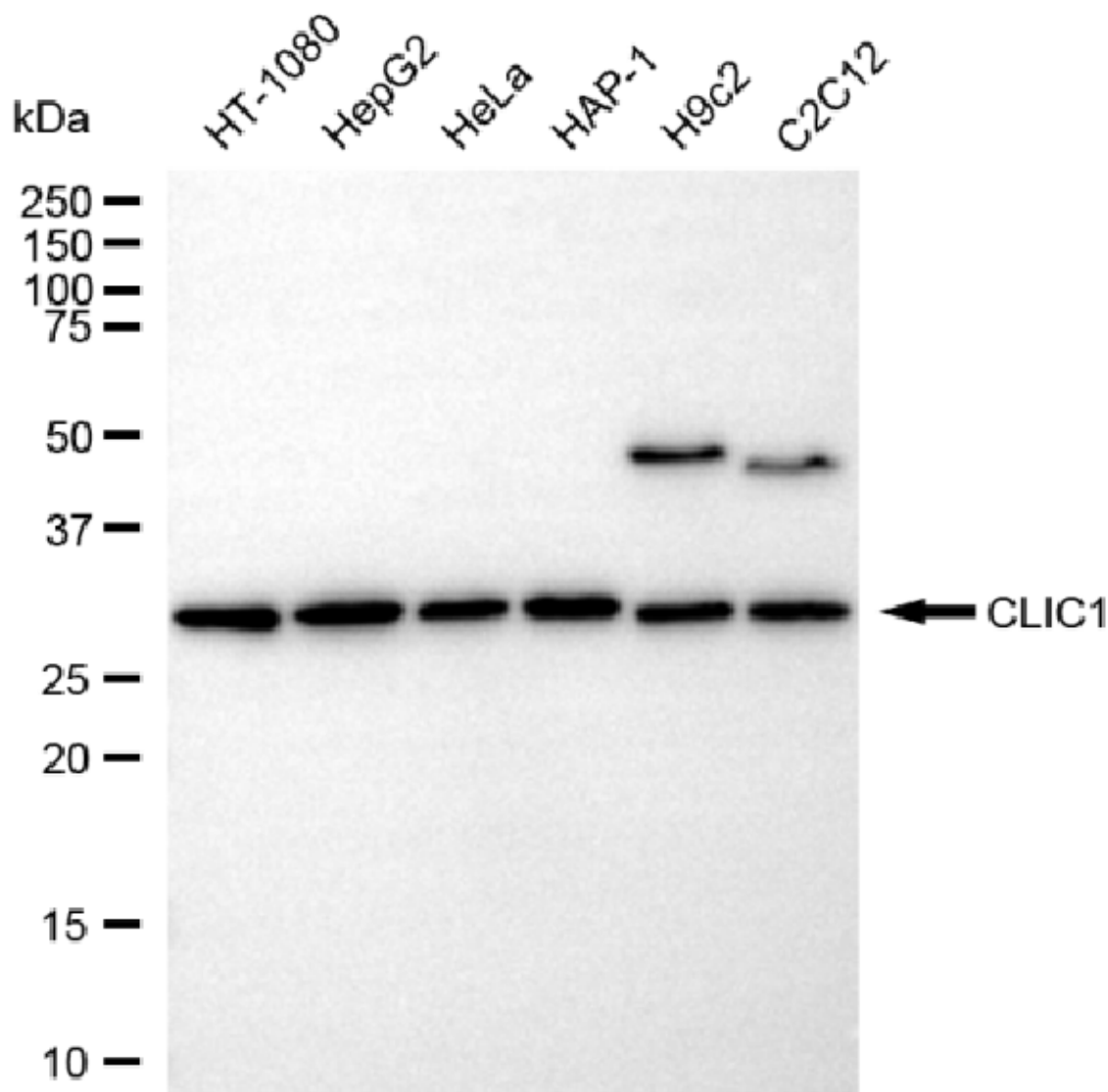
## Recommended Dilutions

Western Blotting (WB): 1:1,000-1:5,000

Flow Cytometry (FCM): 1:2,000

**Note:** This product is for research use only.

## Validation Data



Copyright ©2025 Genuin Biotechnologies LLC

Western blotting analysis using anti-CLIC1 antibody (Cat#5640). Total cell lysates (30 µg) from various cell lines were loaded and separated by SDS-PAGE. The blot was incubated with anti-CLIC1 antibody (Cat#5640, 1:5,000) and HRP-conjugated goat anti-rabbit secondary antibody (Cat#201, 1:20,000) respectively. Image was developed using NaQ™ ECL Substrate Kit (Cat#716).

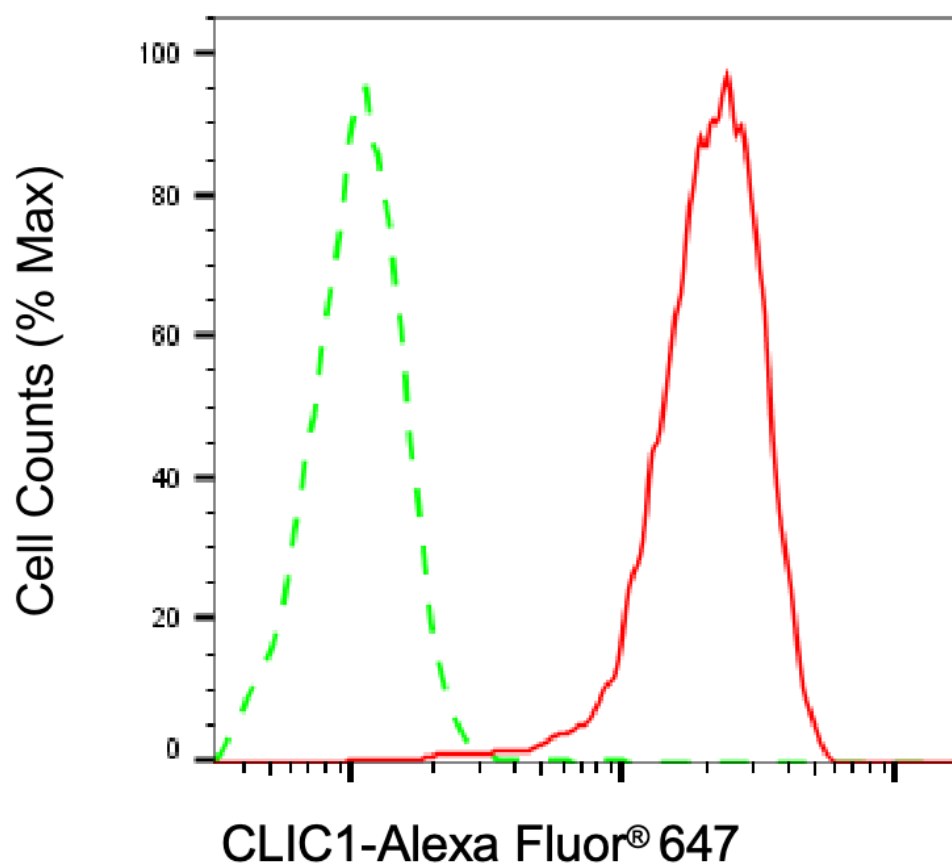
### SUPPORT

SUPPORT@GENUINBIOTECH.COM  
TEL: +1-540-855-7041

### ORDERS

SALES@GENUINBIOTECH.COM  
FAX: +1-540-855-7041

WWW.GENUINBIOTECH.COM



Copyright ©2025 Genuin Biotechnologies LLC

Flow cytometric analysis of CLIC1 expression in HAP-1 cells using anti-CLIC1 antibody (Cat#5640, 1:2,000). Green, isotype control; red, CLIC1.