

Catalog #: 5647

Aliases

ING1; Inhibitor Of Growth Family Member 1; P33ING1b; P24ING1c; P47ING1a; P33ING1; P33; P47; Growth Inhibitory Protein ING1; Inhibitor Of Growth Protein 1; Tumor Suppressor ING1; Growth Inhibitor ING1; Inhibitor Of Growth 1

Background

Gene Name: ING1

NCBI Gene Entry: [3621](#)

UniProt Entry: [Q9UK53](#)

Application Information

Molecular Weight: Predicted, 47 kDa; observed, 47 kDa

Clonality: Rabbit monoclonal antibody

Clone ID: 25GB4685

Species Reactivity: Human, mouse, rat

Applications Tested: Western blotting (WB), flow cytometry (FCM)

Immunogen

A synthesized peptide derived from human ING1

Isotype

Rabbit IgG

Storage Buffer

Supplied in PBS (pH 7.4) containing 50% glycerol, and 0.02% sodium azide.

Storage

Store at -20 °C for one year.

Recommended Dilutions

Western Blotting (WB): 1:1,000-1:5,000

Flow Cytometry (FCM): 1:2,000

Note: This product is for research use only.

Validation Data

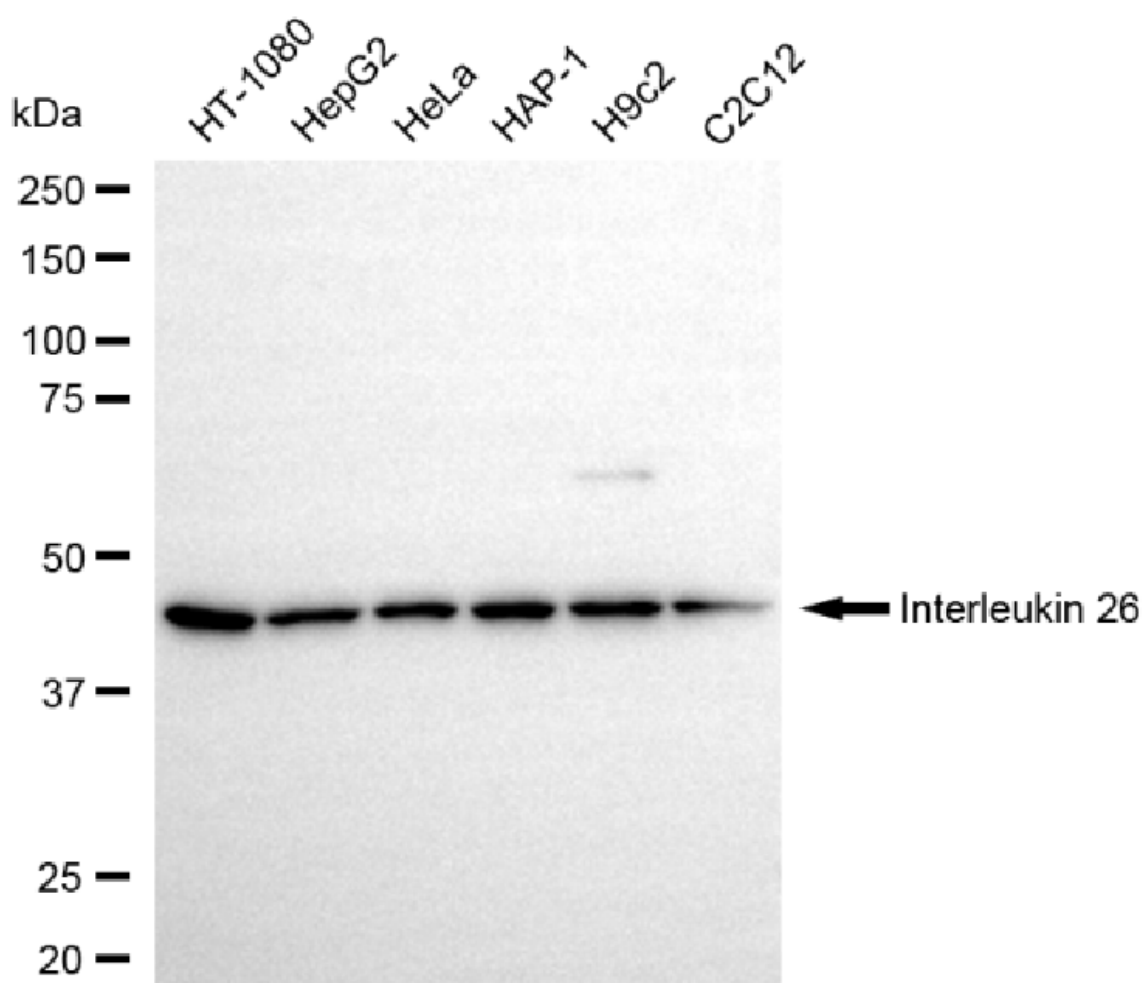
SUPPORT

SUPPORT@GENUINBIOTECH.COM
TEL: +1-540-855-7041

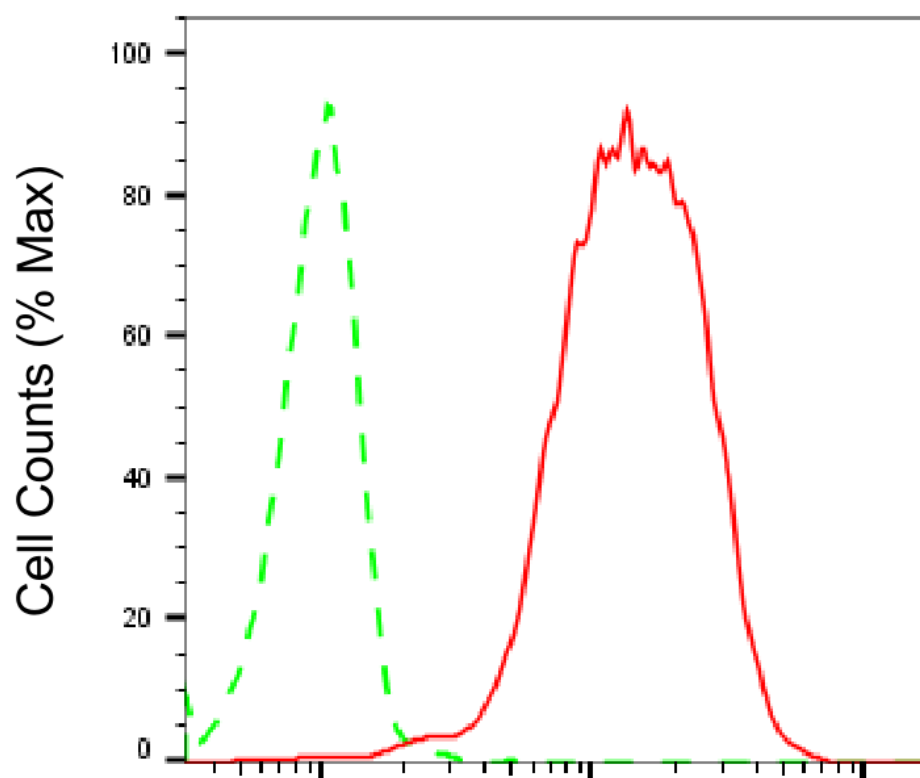
ORDERS

SALES@GENUINBIOTECH.COM
FAX: +1-540-855-7041

WWW.GENUINBIOTECH.COM



Western blotting analysis using anti-interleukin 26 antibody (Cat#5647). Total cell lysates (30 µg) from various cell lines were loaded and separated by SDS-PAGE. The blot was incubated with anti-interleukin 26 antibody (Cat#5647, 1:5,000) and HRP-conjugated goat anti-rabbit secondary antibody (Cat#201, 1:20,000) respectively. Image was developed using NaQ™ ECL Substrate Kit (Cat#716).



Copyright ©2025 Genuin Biotechnologies LLC

Interleukin 26-Alexa Fluor® 647

Flow cytometric analysis of Interleukin 26 expression in HT-1080 cells using anti-Interleukin 26 antibody (Cat#5647, 1:2,000). Green, isotype control; red, Interleukin 26.

SUPPORT

SUPPORT@GENUINBIOTECH.COM
TEL: +1-540-855-7041

ORDERS

SALES@GENUINBIOTECH.COM
FAX: +1-540-855-7041

WWW.GENUINBIOTECH.COM